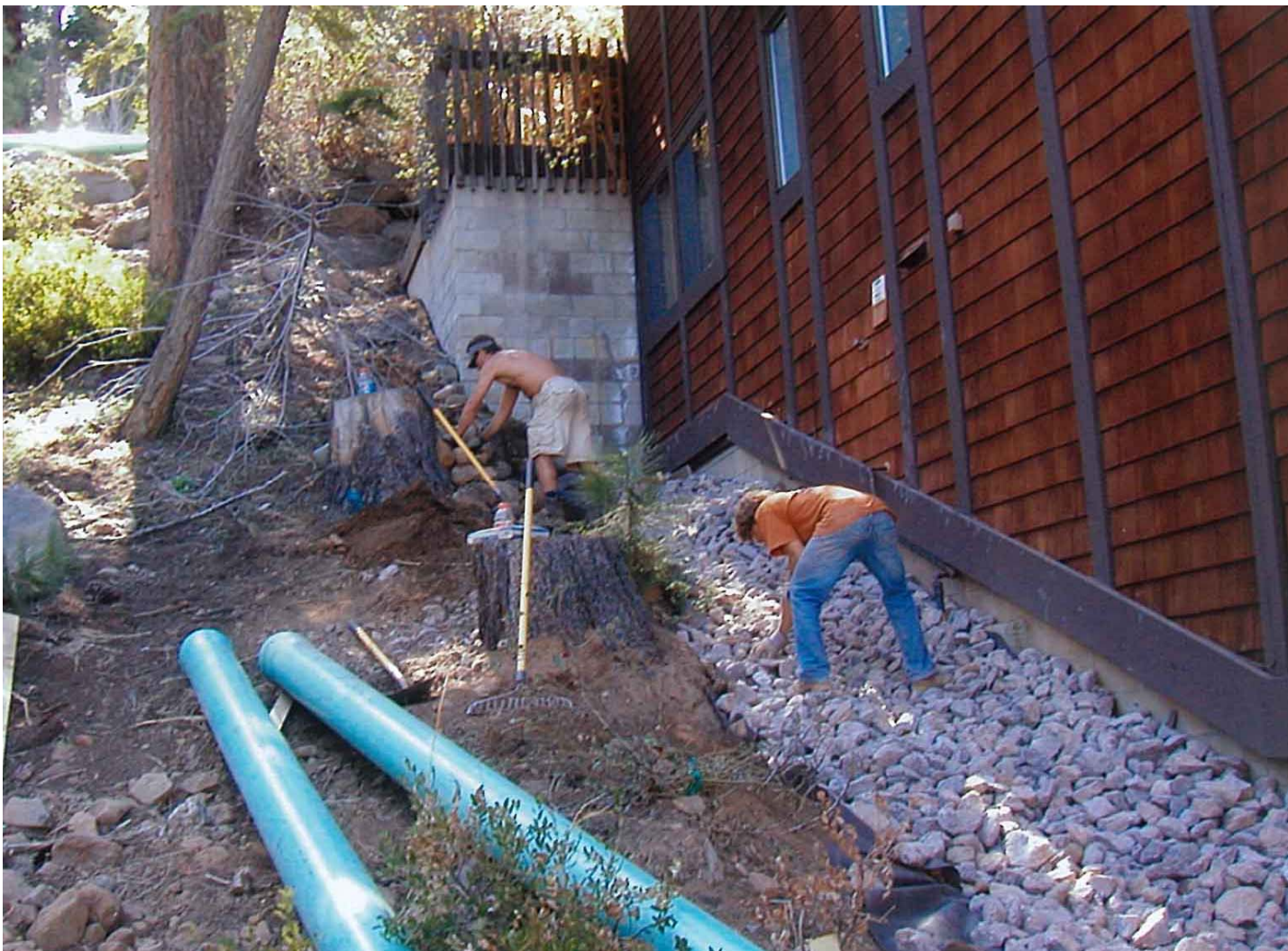


# *Tahoe Regional Planning Agency's 2007 Best in the Basin Awards Program Certificate of Appreciation*

*The following BMP Retrofit has received a special award for excellence. Evaluation criteria included design effectiveness, ease of maintenance, types of materials used and overall visual quality.*

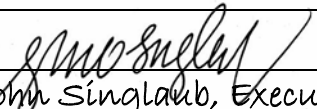


Project: Chínquapín BMP Retrofit, Phase 1 & 2A

Owner: Chínquapín Homeowner's Association

Engineer/Contractor: Green Envy Inc, Contractor; Tieslau Civil Engineering, Engineers

Congratulations from:

  
John Singlaub, Executive Director  
Tahoe Regional Planning Agency  
and the 2007 Awards Evaluation Panel



# *Tahoe Regional Planning Agency's 2007 Best in the Basin Awards Program Certificate of Appreciation*

*The following Green Building Project has received a special award for excellence.  
Evaluation criteria included design effectiveness, ease of maintenance, types of  
materials used and overall visual quality.*

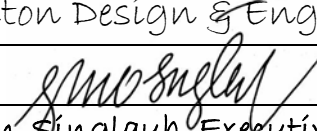


Project: Fitzmorris Residence, 775 Chapel Lane, Tahoe City

Owner: Scott Fitzmorris

Engineer/Contractor/Architect: Walton Design & Engineering, John Doherty Construction

Congratulations from:

  
John Singlaub, Executive Director  
Tahoe Regional Planning Agency  
and the 2007 Awards Evaluation Panel



# *Tahoe Regional Planning Agency's 2007 Best in the Basin Awards Program Certificate of Appreciation*

*The following Commercial Rebuild has received a special award for excellence.  
Evaluation criteria included design effectiveness, ease of maintenance, types of  
materials used and overall visual quality.*



Project: Gary Davis Building

---

Owner: Gary Davis

---

Engineer/Contractor/Architect: Gary Davis Group, G.C. Construction, Jim Baldwin  
Construction, Hall Excavation, Estate Landscape & Irrigation, Sunshine Painting, Tahoe City  
Roofing

---

Congratulations from:

---

  
John Singlaub, Executive Director  
Tahoe Regional Planning Agency  
and the 2007 Awards Evaluation Panel



# *Tahoe Regional Planning Agency's 2007 Best in the Basin Awards Program Certificate of Appreciation*

*The following Recreation/Public Park Project has received a special award for excellence. Evaluation criteria included design effectiveness, ease of maintenance, types of materials used and overall visual quality.*

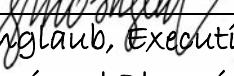


Project: Heritage Plaza

Owner: Placer County

Engineer/Contractor/Architect: Design Workshop, Auerbach Engineering, Correa Construction

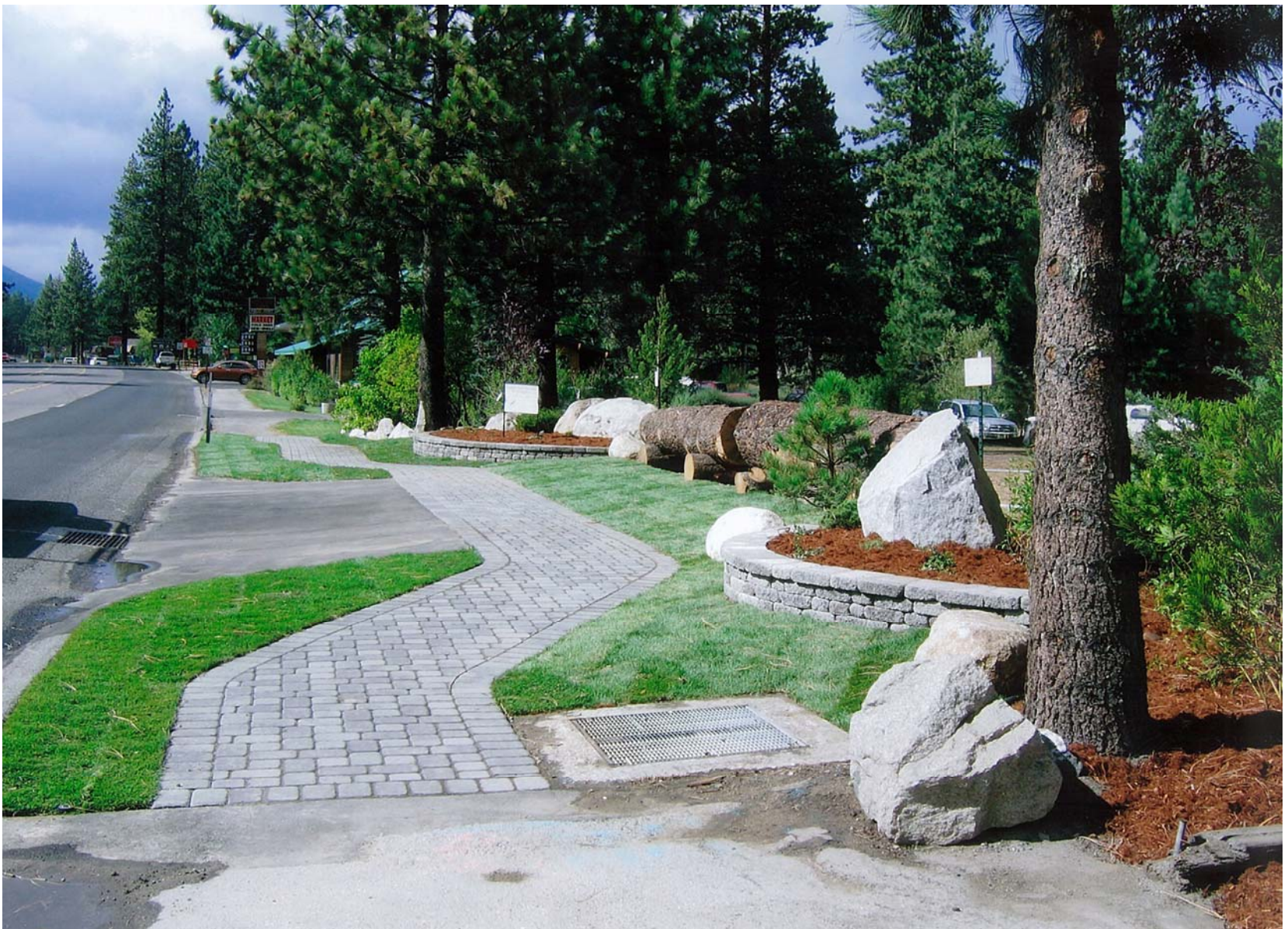
Congratulations from:

  
John Singlaub, Executive Director  
Tahoe Regional Planning Agency  
and the 2007 Awards Evaluation Panel



# *Tahoe Regional Planning Agency's 2007 Best in the Basin Awards Program Certificate of Appreciation*

*The following Restoration has received a special award for excellence. Evaluation criteria included design effectiveness, ease of maintenance, types of materials used and overall visual quality.*

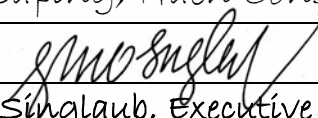


Project: 941 Emerald Bay Road

Owner: S&J Leman Trust, C&S Purance Trust

Engineer/Contractor/Architect: Clinton Purvance & Steve Leman Design, Tahoe Paving Stones, Tahoe Outdoor Living, Doherty Landscaping, Haem Construction, V&T Construction

Congratulations from:

  
John Singlaub, Executive Director  
Tahoe Regional Planning Agency  
and the 2007 Awards Evaluation Panel



# *Tahoe Regional Planning Agency's 2007 Best in the Basin Awards Program Certificate of Appreciation*

*The following Residential Modification has received a special award for excellence.  
Evaluation criteria included design effectiveness, ease of maintenance, types of  
materials used and overall visual quality.*



Project: Nall Residence, 920 Snowshoe, Tahoe City

---

Owner: Christian Nall

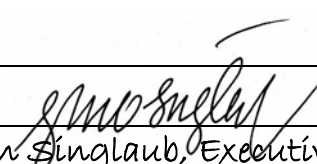
---

Contractor/Architect/Hardscape: Mike Ericson Construction, Murawski Construction, Shelton  
& Associates, Ken Saline Masonry

---

Congratulations from:

---

  
John Singlaub, Executive Director  
Tahoe Regional Planning Agency  
and the 2007 Awards Evaluation Panel



# *Tahoe Regional Planning Agency's 2007 Best in the Basin Awards Program Certificate of Appreciation*

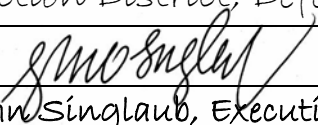
*The following Defensible Space Program has received a special award for excellence for effectively reducing the threat of catastrophic wildfire at Lake Tahoe.*



Photo: Incline Village General Improvement District

Project: North Lake Tahoe Fire Protection District, Defensible Space Program at Incline Village

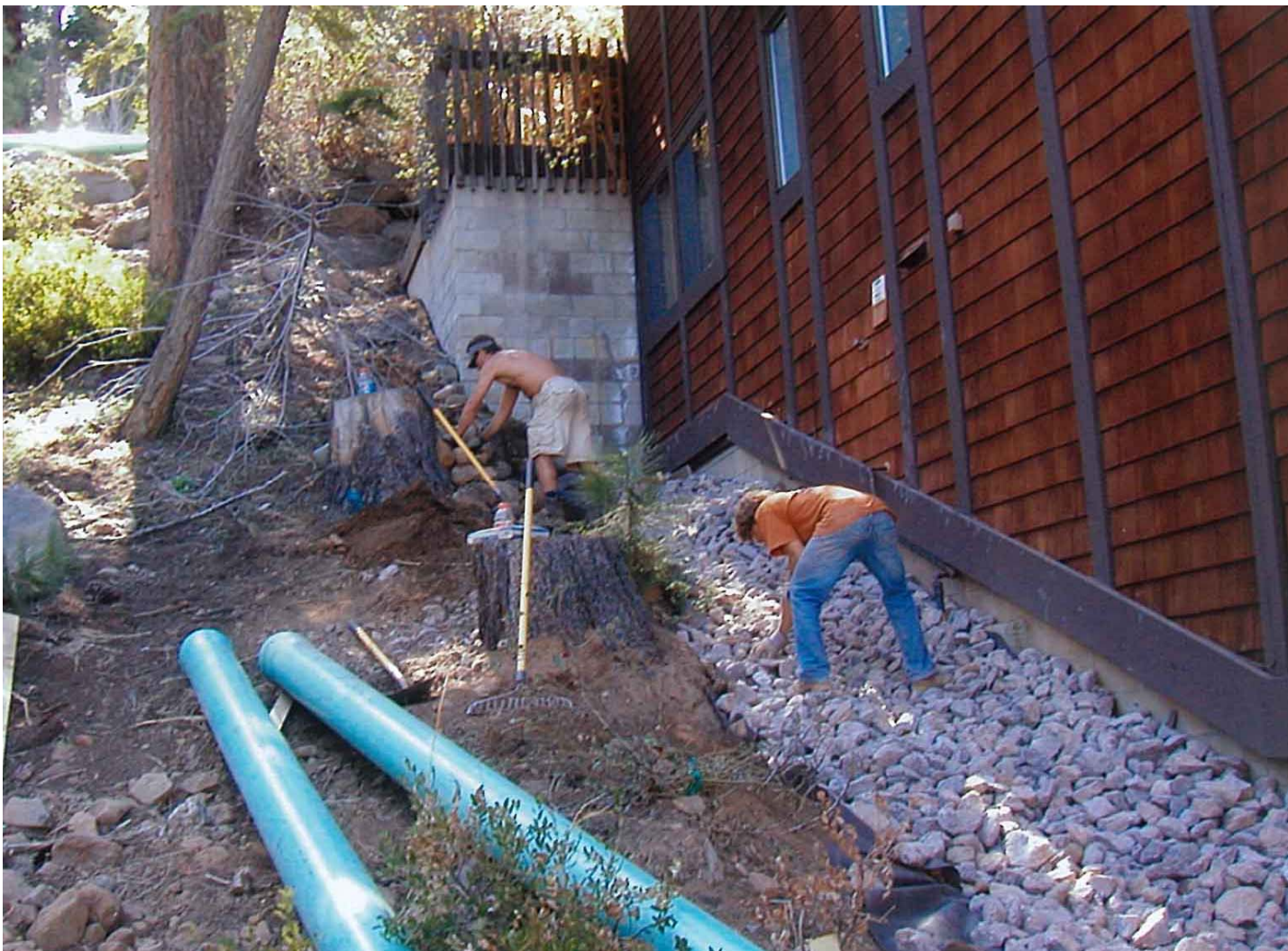
Congratulations from:

  
John Singlaub, Executive Director  
Tahoe Regional Planning Agency  
and the 2007 Awards Evaluation Panel



# *Tahoe Regional Planning Agency's 2007 Best in the Basin Awards Program Certificate of Appreciation*

*The following BMP Retrofit has received a special award for excellence. Evaluation criteria included design effectiveness, ease of maintenance, types of materials used and overall visual quality.*

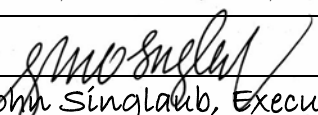


Project: Chínquapín BMP Retrofit, Phase 1 & 2A

Owner: Chínquapín Homeowner's Association

Engineer/Contractor: Green Envy Inc, Contractor; Tieslau Civil Engineering, Engineers

Congratulations from:

  
John Singlaub, Executive Director  
Tahoe Regional Planning Agency  
and the 2007 Awards Evaluation Panel



# *Tahoe Regional Planning Agency's 2007 Best in the Basin Awards Program Certificate of Appreciation*

*The following Green Building Project has received a special award for excellence.  
Evaluation criteria included design effectiveness, ease of maintenance, types of  
materials used and overall visual quality.*

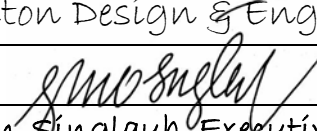


Project: Fitzmorris Residence, 775 Chapel Lane, Tahoe City

Owner: Scott Fitzmorris

Engineer/Contractor/Architect: Walton Design & Engineering, John Doherty Construction

Congratulations from:

  
John Singlaub, Executive Director  
Tahoe Regional Planning Agency  
and the 2007 Awards Evaluation Panel



# *Tahoe Regional Planning Agency's 2007 Best in the Basin Awards Program Certificate of Appreciation*

*The following Commercial Rebuild has received a special award for excellence.  
Evaluation criteria included design effectiveness, ease of maintenance, types of  
materials used and overall visual quality.*



Project: Gary Davis Building

---

Owner: Gary Davis

---

Engineer/Contractor/Architect: Gary Davis Group, G.C. Construction, Jim Baldwin  
Construction, Hall Excavation, Estate Landscape & Irrigation, Sunshine Painting, Tahoe City  
Roofing

---

Congratulations from:

---

  
John Singlaub, Executive Director  
Tahoe Regional Planning Agency  
and the 2007 Awards Evaluation Panel



# *Tahoe Regional Planning Agency's 2007 Best in the Basin Awards Program Certificate of Appreciation*

*The following Recreation/Public Park Project has received a special award for excellence. Evaluation criteria included design effectiveness, ease of maintenance, types of materials used and overall visual quality.*

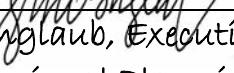


Project: Heritage Plaza

Owner: Placer County

Engineer/Contractor/Architect: Design Workshop, Auerbach Engineering, Correa Construction

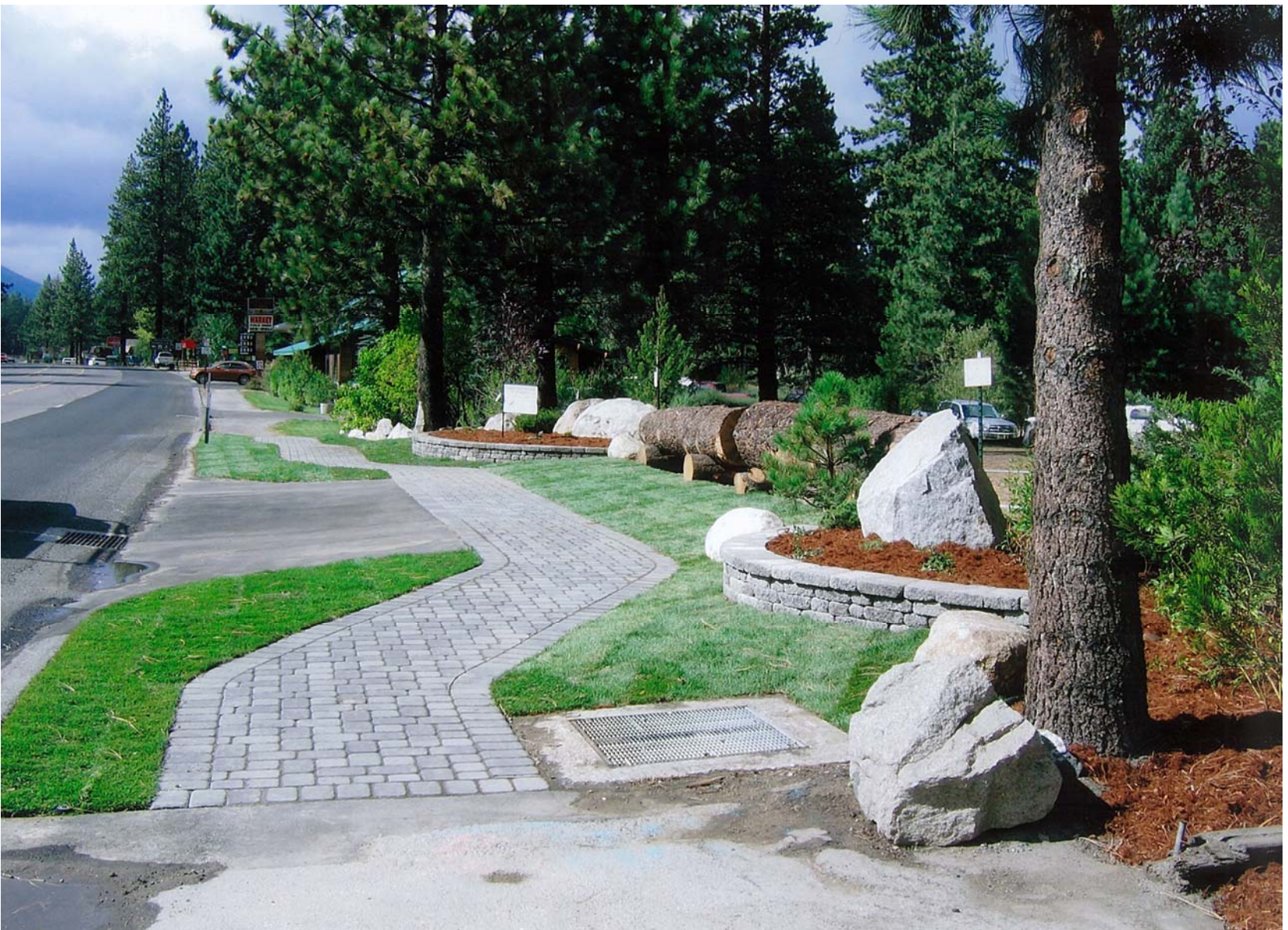
Congratulations from:

  
John Singlaub, Executive Director  
Tahoe Regional Planning Agency  
and the 2007 Awards Evaluation Panel



# *Tahoe Regional Planning Agency's 2007 Best in the Basin Awards Program Certificate of Appreciation*

*The following Restoration has received a special award for excellence. Evaluation criteria included design effectiveness, ease of maintenance, types of materials used and overall visual quality.*

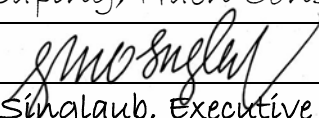


Project: 941 Emerald Bay Road

Owner: S&J Leman Trust, C&S Purance Trust

Engineer/Contractor/Architect: Clinton Purvance & Steve Leman Design, Tahoe Paving Stones, Tahoe Outdoor Living, Doherty Landscaping, Haem Construction, V&T Construction

Congratulations from:

  
John Singlaub, Executive Director  
Tahoe Regional Planning Agency  
and the 2007 Awards Evaluation Panel



# *Tahoe Regional Planning Agency's 2007 Best in the Basin Awards Program Certificate of Appreciation*

*The following Residential Modification has received a special award for excellence.  
Evaluation criteria included design effectiveness, ease of maintenance, types of  
materials used and overall visual quality.*



Project: Nall Residence, 920 Snowshoe, Tahoe City

---

Owner: Christian Nall

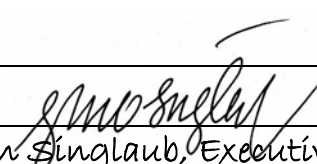
---

Contractor/Architect/Hardscape: Mike Ericson Construction, Murawski Construction, Shelton  
& Associates, Ken Saline Masonry

---

Congratulations from:

---

  
John Singlaub, Executive Director  
Tahoe Regional Planning Agency  
and the 2007 Awards Evaluation Panel



# *Tahoe Regional Planning Agency's 2007 Best in the Basin Awards Program Certificate of Appreciation*

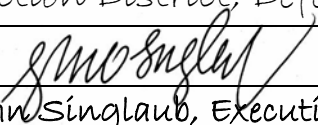
*The following Defensible Space Program has received a special award for excellence for effectively reducing the threat of catastrophic wildfire at Lake Tahoe.*



Photo: Incline Village General Improvement District

Project: North Lake Tahoe Fire Protection District, Defensible Space Program at Incline Village

Congratulations from:

  
John Singlaub, Executive Director  
Tahoe Regional Planning Agency  
and the 2007 Awards Evaluation Panel