



Mail

PO Box 5310
Stateline, NV 89449-5310

Location

128 Market Street
Stateline, NV 89449

Contact

Phone: 775-588-4547
Fax: 775-588-4527
www.trpa.gov

STAFF REPORT

Date: May 15, 2024
To: TRPA Governing Board
From: TRPA Staff
Subject: Demonstration of the new Online Climate Resilience Dashboard for the Tahoe Region

Summary and Staff Recommendation:

Staff will provide an overview and live demonstration of the new [Climate Resilience Dashboard](https://climate.laketahoeinfo.org/) (<https://climate.laketahoeinfo.org/>) for the Tahoe Region. This is an information only item, no action is requested.

Project Description/Background:

Lake Tahoe's fragile alpine environment is already experiencing the impacts of climate change. These climate impacts include severe droughts, flooding, warming temperatures, increased risk of wildfire, and more. The Tahoe Regional Planning Agency and partners are implementing climate resilience projects across the region through the [Lake Tahoe Environmental Improvement Program \(EIP\)](#) and the [Climate Resilience Action Strategy](#). Climate resilience projects will advance equity, create jobs, and build resilience for the Tahoe Basin's extraordinary natural resources, people, and visitors.

The dashboard, funded by the California Tahoe Conservancy and TRPA, pulls together regularly collected data from diverse sources and displays them in relation to their role in climate resilience. For example, the dashboard tracks the resilience of Lake Tahoe's transportation system by reporting total transit ridership, equitable access to transportation, miles of bike and pedestrian facilities, a breakdown of people's transportation choices, and the availability of electric vehicle charging stations. The information will help full- and part-time residents, businesses, and Lake Tahoe Environmental Improvement Program partners measure the results of climate actions.

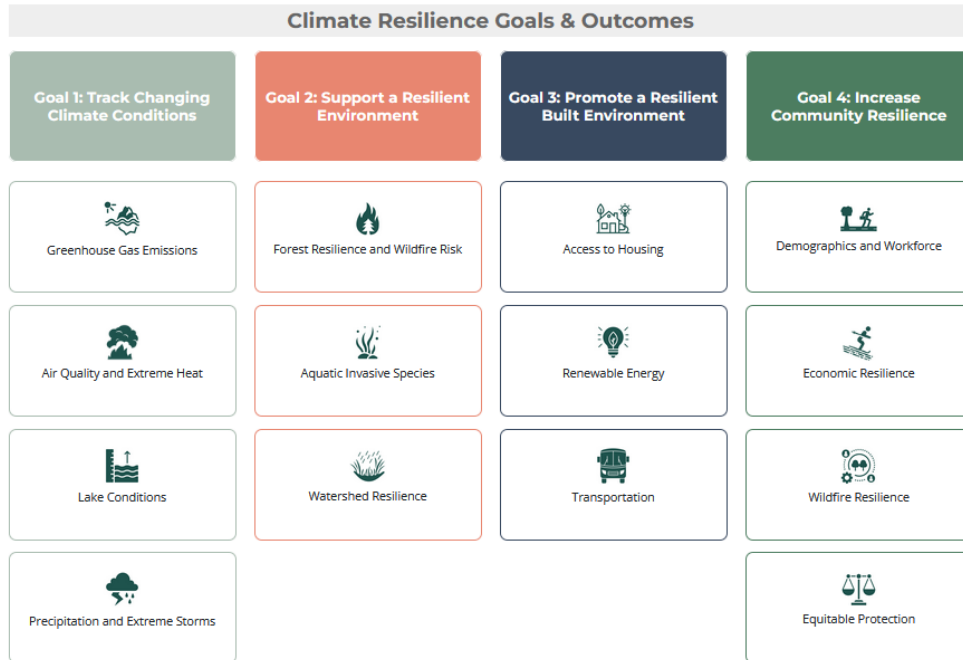
Climate resilience refers to how well-prepared Lake Tahoe's ecosystem, infrastructure, and communities are for continued temperature increases, changing weather patterns, and climate hazard events. This includes local actions needed to reduce greenhouse gas emissions and pollution.

TRPA launched the dashboard to the public on April 27, 2024. In the short time since its launch, the Climate Dashboard has already demonstrated its value to the region. Data and charts from the dashboard were recently used by TRPA staff while presenting the Agency's housing program to the Nevada Interim Committee for the Oversight of TRPA and Marlette Lake Water System.

Climate Resilience Dashboard

Lake Tahoe's fragile alpine environment is already experiencing the impacts of climate change. These climate impacts include severe droughts, flooding, warming temperatures, increased risk of wildfire, and more. The Tahoe Regional Planning Agency and partners are implementing climate resilience projects across the region through the [Lake Tahoe Environmental Improvement Program \(EIP\)](#) and the [Climate Resilience Action Strategy](#). Climate resilience projects will advance equity, create jobs, and build resilience for the Tahoe Basin's extraordinary natural resources, people, and visitors.

The Climate Resilience Dashboard tracks progress toward building climate resilience across four long-term goals and associated indicators. Measuring progress toward resilience supports the ongoing process of anticipating, preparing for, and adapting to climate change through comprehensive climate resilience strategies. **Click the icons below the goals to learn about ongoing work and key ways we are tracking progress.**



Screenshot of the Climate Dashboard Homepage

Dashboard Development

The dashboard was developed with the support of ECONorthwest, Collective Strategies, Fehr & Peers, and Resource Systems Group, Inc. The consultant team conducted best practices research, evaluated the old sustainability dashboard, and engaged 31 regional partners to garner input on dashboard metrics.

The dashboard is part of the broader Lake Tahoe Information Platform and is integrated into TRPA's extensive data systems. Most of the metrics are updated on an automated basis to ensure the dashboard reports data promptly.

Contact Information:

For questions regarding the Climate Resilience Dashboard, please contact Devin Middlebrook, Sustainability Program Manager, at (775) 589-5230 or dmiddlebrook@trpa.gov.

To submit a written public comment, email publiccomment@trpa.gov with the appropriate agenda item in the subject line. Written comments received by 4 p.m. the day before a scheduled public meeting will be distributed and posted to the TRPA website before the meeting begins. TRPA does not guarantee written comments received after 4 p.m. the day before a meeting will be distributed and posted in time for the meeting.

Supporting Documents:

- [Climate Dashboard Existing Documents Review](#)
- [Climate Dashboard Best Practices Summary](#)
- [Climate Dashboard Partner Interview Notes](#)
- [Climate Dashboard Final Indicator Report](#)