



City of South Lake Tahoe
Engineering Division
Turning Counts Study - Field Sheet

Location:
Date:
Recorder:
Interval (dd):
(In Minutes)

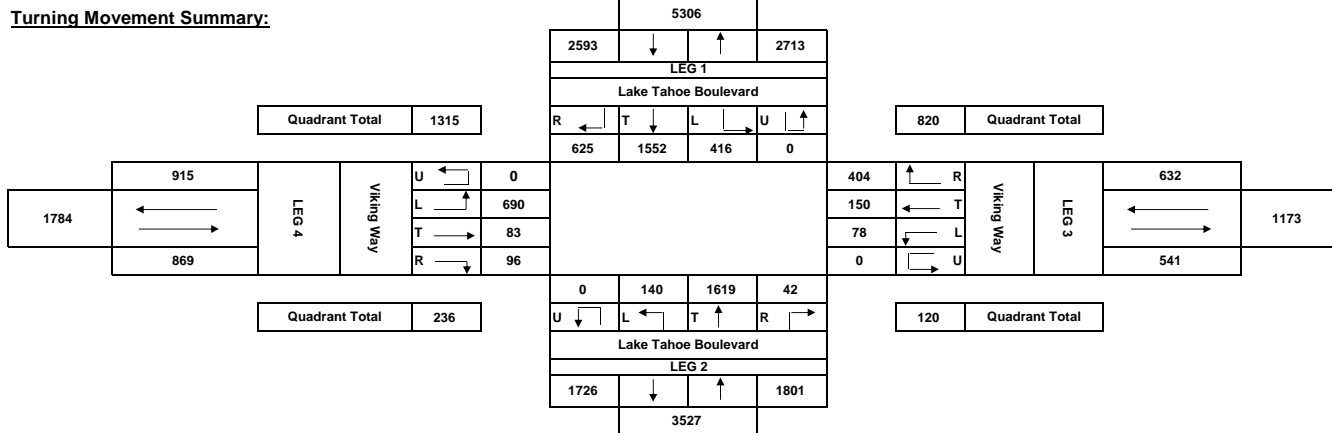
Lake Tahoe Boulevard at Viking Way
5/3/2016 Tuesday
Randy Carlson
15

County:
Town:
Weather:

El Dorado
South Lake Tahoe
Clear in the morning.
Overcast with a few sprinkles in the afternoon

PEAK HOURS	AM PERIOD	6:00AM	Start	End	Volume	PM PERIOD	Start	End	Volume
	12:00PM		07:15	08:15	917	12:00PM-7:00PM	14:15	15:15	707

Turning Movement Summary:



TIMS

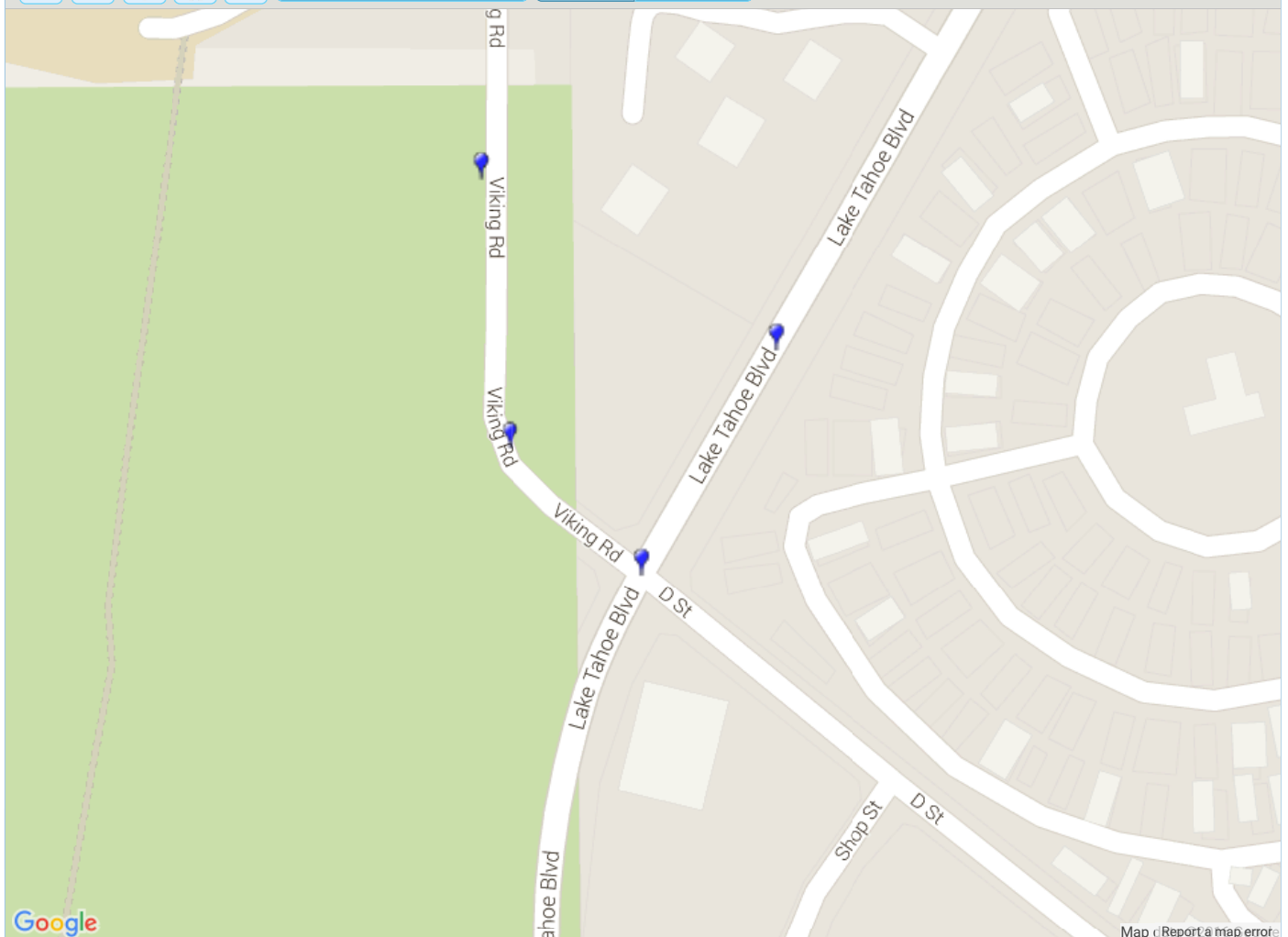
Transportation Injury Mapping System

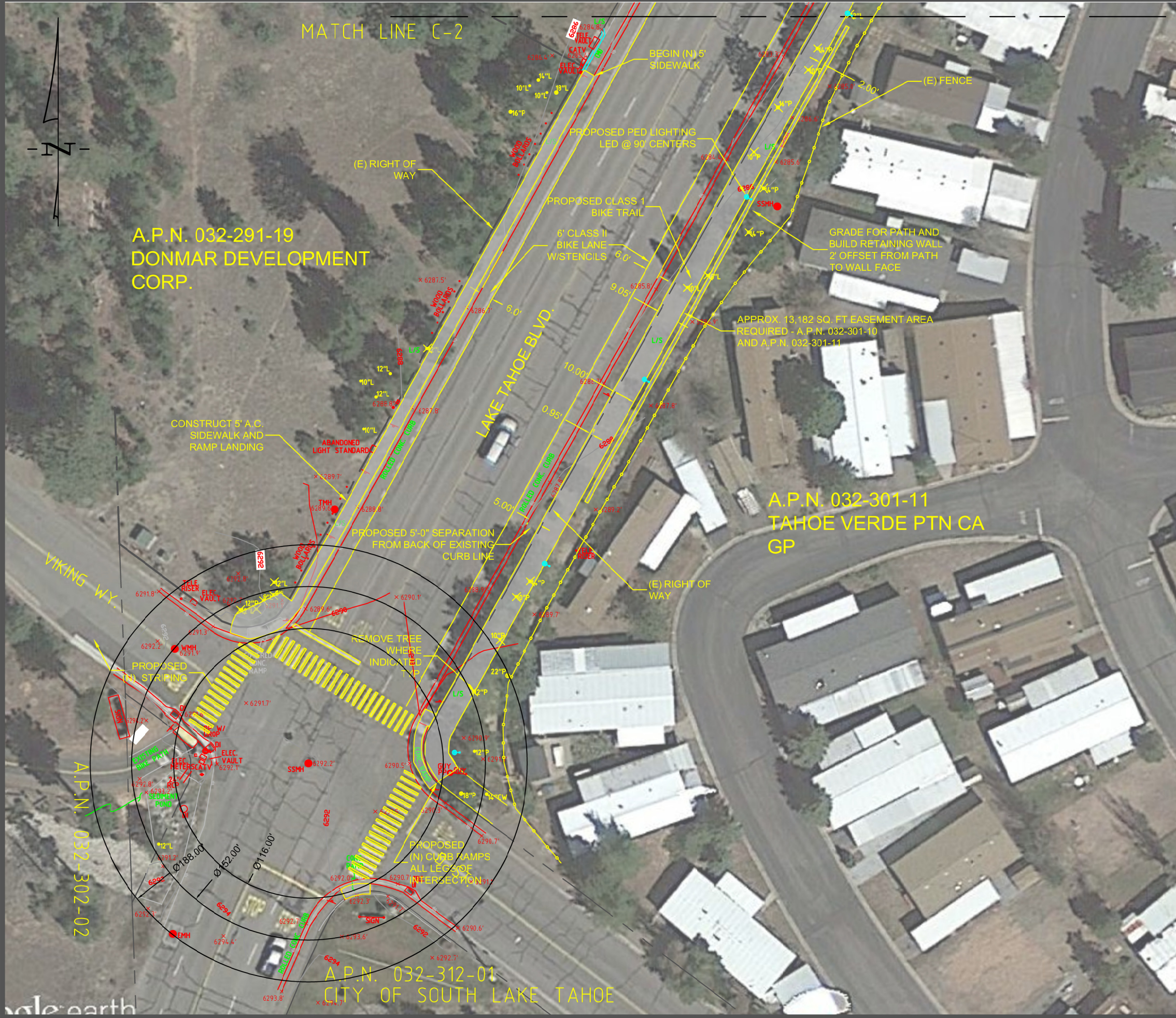
Welcome!

[Randy Carlson](#)[Logout](#)[Home](#) | [About](#) | [Tools](#) | [Resources](#) | [News](#) | [Help](#)

SWITRS QUERY & MAP

Result Summary

[Back to Select Queries](#) | [New Query](#) | [Load CaseIDs](#) | [Saved Queries](#) | [Help](#)[Overall Summary](#)[Map](#)[Killed/Injured Victim Summary](#)[Ped Collision Summary](#)[Save Query](#) | [Download Data](#) | [Print](#)**Results Map:** 715 of 745 (96%) Collisions Mapped.[List Unmapped Collisions](#)[Cluster](#)[Heatmap](#)[Home](#) | [About](#) | [Tools](#) | [Resources](#) | [News](#) | [Help](#) © UC Regents, 2011-2016



NOTES:

1. THE PROPERTY LINE INFORMATION SHOWN HEREIN IS EL DORADO COUNTY GIS AND DOES NOT REPRESENT A BOUNDARY SURVEY. IT HAS BEEN SCALED FROM GRID TO GROUND SURFACES.
2. THIS SURVEY HAS BEEN PREPARED WITHOUT USE OF A TITLE REPORT UNLESS REFERENCED HEREIN.
3. ONLY VISIBLE FEATURES HAVE BEEN SURVEYED. UNDERGROUND UTILITIES ARE NOT REPRESENTED HEREIN.
4. A.P.N. OWNERSHIP DATA IS FROM THE MOST RECENT EL DORADO COUNTY PARCEL DATA
5. AERIAL IMAGERY IS BEING UTILIZED FOR INFORMATIONAL PURPOSES ONLY AND NOT AS A SURVEY.
6. THE DRAWINGS REPRESENT CONCEPTUAL LAYOUT OF PROPOSED CYCLING AND PEDESTRIAN IMPROVEMENTS. THE ALIGNMENT IS CONCEPTUAL ONLY AND DOES NOT IMPLY FINAL DESIGN.
7. PROPOSED TRAIL AND IMPROVEMENT ALIGNMENT ASSUME FUTURE EASEMENT OWNERSHIP BY CITY.
8. ALL DESIGN ELEMENTS OF CLASS 1 BIKE TRAIL INCLUDING STRIPING, SIGNAGE AND OTHER ANCILLARY ELEMENTS ARE NOT SHOWN HEREIN. FINAL PLANS, SPECIFICATIONS, AND ENGINEERING DOCUMENTS WILL PROVIDE ALL MANDATED ELEMENTS OF TRAIL
9. THESE DRAWINGS DO NOT SHOW IMPROVEMENTS TO INTERSECTIONS IN PROJECT AREA EXCEPT PROPOSED CROSSWALK STRIPING AND RAMPS IN ALIGNMENT WITH PROPOSED TRAIL ONLY. INTERSECT CROSSWALK STRIPING ACROSS LAKE TAHOE BOULEVARD WILL NOT BE INCLUDED IN SCOPE.

SEGMENT DATA TABLE		SHEET C-1			
Tree Removal	< 6"	6" - 12"	12" - 18"	18" +	
	0	9	5	0	
Utility Relocations	Fire Hydrant	Manhole	Valve	Utility Pole	
	1	1	0	0	
Easement Area Required	Bike Path	Utility	T.C.E		
	3,375	0	3,600		
Class 1 Trail Improvements	Paved S.F.	Wall L.F.	Fence L.F.	Sidewalk - S.F.	
	3,750	240	0	1,650	
ADA Improvements	Curb Ramps				
	2				
Signage - Proposed	Stop	Yield	Wayfinding	Snow Stakes	
	1	0	2	20	
Striping - Proposed	Class II L.F.	Trail C.L. - L.F.	Stop Bars 1' - EA.	X-walk 1'x10' EA.	
	340	350	1	3	
Pedestrian Lighting	Pole	Fixture	Meter	N-9 Box	
	4	4	1	6	
Landscape Area	Total Area	Sod	Native	Other	

LEGEND	
A/C	ASPHALT CONCRETE
CATV	CABLE VAULT
CMU	CONC. MASONRY UNIT WALL
CW	COTTONWOOD TREE
DI	DRAIN INLET
F	FIR TREE
FH	FIRE HYDRANT
ICV	IRRIGATION CONTROL VALVE
IMH	INTERCEPTOR MANHOLE
IV	IRRIGATION VAULT
LP	LIGHTPOLE
L	LODGEPOLE PINE
L/S	LANDSCAPE/NATURAL GRND.
P	PINE TREE
SN	SIGN
SDMH	STORM DRAIN MAN HOLE
SSC0	SAN. SEWER CLEAN OUT
SSMH	SAN. SEWER MAN HOLE
TW	TRAVEL WAY
TS	TRAFFIC SIGNAL/VAULT
x77.1	SPOT ELEVATION
EP	EDGE OF PAVEMENT
CP	CONTROL POINT

REVISIONS

BENCH MARK	NUMBER	7-A	MARK	BRM400
	ELEVATION	6633.90'	DATUM	NAD83
	DESCRIPTION	RAISED LTRS		
		4"SP. DN FIRE HYDRANT		
		CSLT LINE NO. 50		

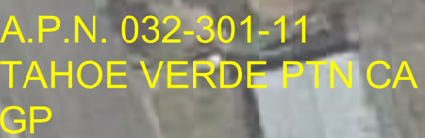
CITY OF SOUTH LAKE TAHOE
PUBLIC WORKS DEPARTMENT
1500 N. LAKE TAHOE BLVD.
SOUTH LAKE TAHOE, CA 96150
RAY JARVIS - CITY ENGINEER
Ph: (530) 542-6030 Fax: (530) 541-7524

SEAL

CONCEPT PLANS FOR
LAKE TAHOE BLVD. CLASS 1 BIKE TRAIL

DESIGNED/DRAWN	J.M.
CHECKED	
DATE	JUNE 2016
SCALE	NONE
JOB NO.	

SHEET NO.
C-1
OF TOTAL



- | | <u>LEGEND</u> |
|-------|--------------------------|
| A/C | ASPHALT CONCRETE |
| CATV | CABLE VAULT |
| CMU | CONC. MASONRY UNIT WALL |
| CW | COTTONWOOD TREE |
| DI | DRAIN INLET |
| F | FIR TREE |
| FH | FIRE HYDRANT |
| ICV | IRRIGATION CONTROL VALVE |
| IMH | INTERCEPTOR MANHOLE |
| IV | IRRIGATION VAULT |
| LP | LIGHTPOLE |
| L | LODGEPOLE PINE |
| L/S | LANDSCAPE/NATURAL GRND. |
| P | PINE TREE |
| SN | SIGN |
| SDMH | STORM DRAIN MAN HOLE |
| SSCO | SAN. SEWER CLEAN OUT |
| SSMH | SAN. SEWER MAN HOLE |
| TW | TRAVEL WAY |
| TS | TRAFFIC SIGNAL/VAULT |
| x77.1 | SPOT ELEVATION |
| EP | EDGE OF PAVEMENT |
| CP | CONTROL POINT |

OF TOTAL



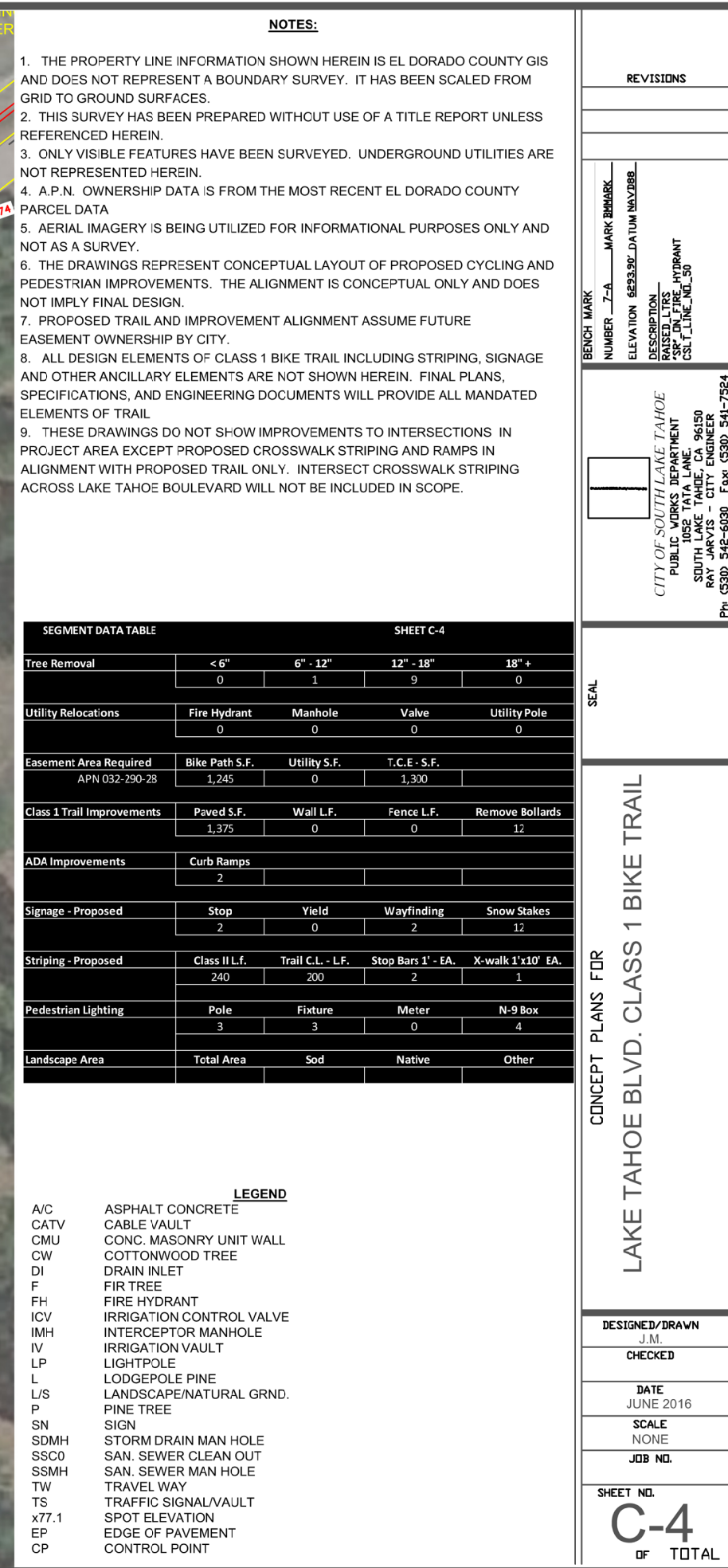
291-34
RRA APTS

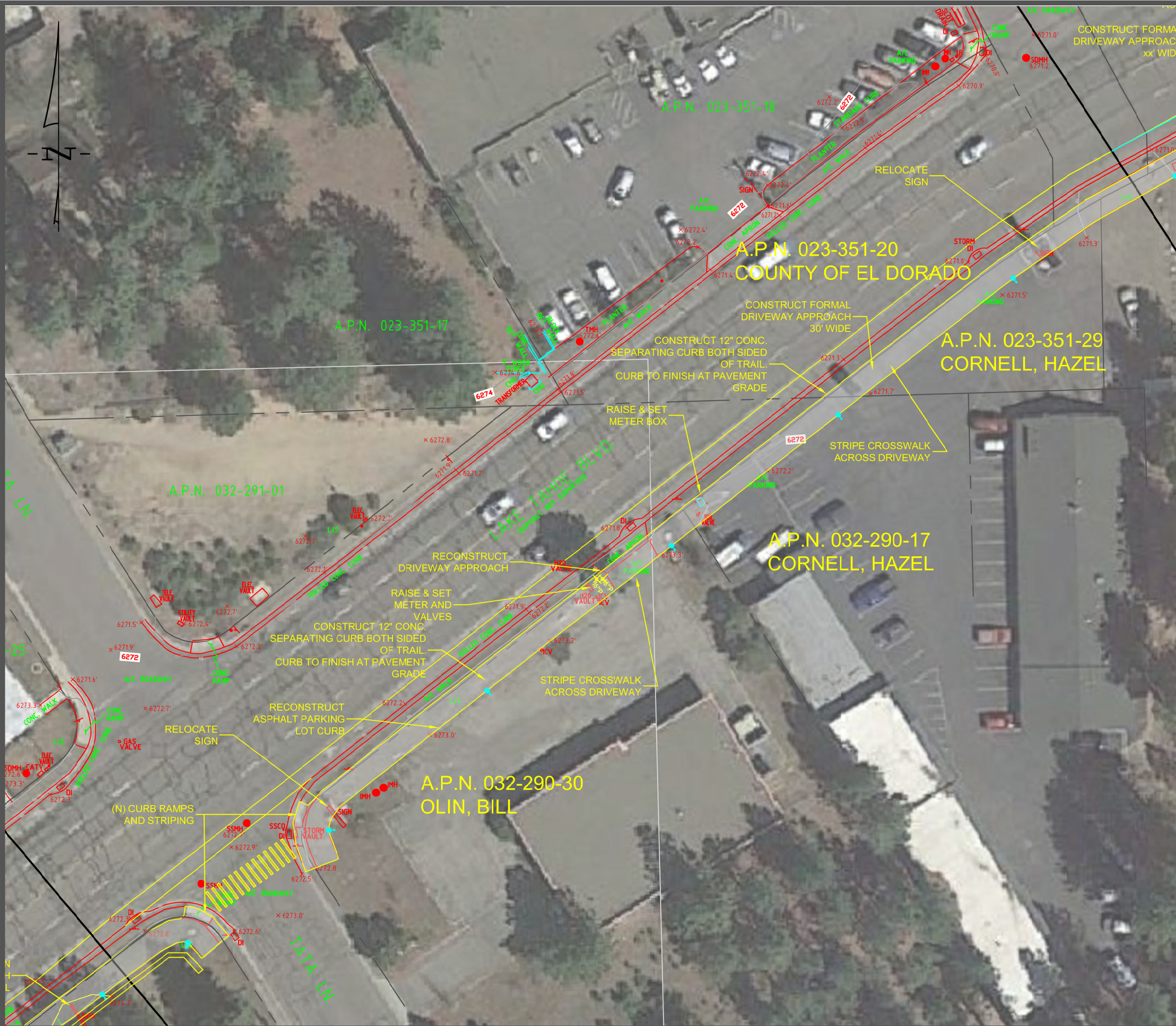
A.P.N. 032-301-10
TAHOE VERDE PTN CA GP

1. THE PROPERTY LINE INFORMATION SHOWN HEREIN IS EL DORADO COUNTY GIS AND DOES NOT REPRESENT A BOUNDARY SURVEY. IT HAS BEEN SCALED FROM GRID TO GRID SURFACES.
2. THIS SURVEY HAS BEEN PREPARED WITHOUT USE OF A TITLE REPORT UNLESS REFERENCED HEREIN.
3. ONLY VISIBLE FEATURES HAVE BEEN SURVEYED. UNDERGROUND UTILITIES ARE NOT REPRESENTED HEREIN.
4. A.P.N. OWNERSHIP DATA IS FROM THE MOST RECENT EL DORADO COUNTY PARCEL DATA
5. AERIAL IMAGERY IS BEING UTILIZED FOR INFORMATIONAL PURPOSES ONLY AND NOT AS A SURVEY.
6. THE DRAWINGS REPRESENT CONCEPTUAL LAYOUT OF PROPOSED CYCLING AND PEDESTRIAN IMPROVEMENTS. THE ALIGNMENT IS CONCEPTUAL ONLY AND DOES NOT IMPLY FINAL DESIGN.
7. PROPOSED TRAIL AND IMPROVEMENT ALIGNMENT ASSUME FUTURE EASEMENT OWNERSHIP BY CITY.
8. ALL DESIGN ELEMENTS OF CLASS 1 BIKE TRAIL INCLUDING STRIPING, SIGNAGE AND OTHER ANCILLARY ELEMENTS ARE NOT SHOWN HEREIN. FINAL PLANS, SPECIFICATIONS, AND ENGINEERING DOCUMENTS WILL PROVIDE ALL MANDATED ELEMENTS OF TRAIL
9. THESE DRAWINGS DO NOT SHOW IMPROVEMENTS TO INTERSECTIONS IN PROJECT AREA EXCEPT PROPOSED CROSSWALK STRIPING AND RAMPS IN ALIGNMENT WITH PROPOSED TRAIL ONLY. INTERSECT CROSSWALK STRIPING ACROSS LAKE TAHOE BOULEVARD WILL NOT BE INCLUDED IN SCOPE.

	<u>LEGEND</u>
A/C	ASPHALT CONCRETE
CATV	CABLE VAULT
CMU	CONC. MASONRY UNIT WALL
CW	COTTONWOOD TREE
DI	DRAIN INLET
F	FIR TREE
FH	FIRE HYDRANT
ICV	IRRIGATION CONTROL VALVE
IMH	INTERCEPTOR MANHOLE
IV	IRRIGATION VAULT
LP	LIGHTPOLE
L	LODGESCALE PINE
L/S	LANDSCAPE/NATURAL GRND.
P	PINE TREE
SN	SIGN
SDMH	STORM DRAIN MAN HOLE
SSC0	SAN. SEWER CLEAN OUT
SMH	SAN. SEWER MAN HOLE
TW	TRAVEL WAY
TS	TRAFFIC SIGNAL/VAULT
x77.1	SPOT ELEVATION
EP	EDGE OF PAVEMENT
CP	CONTROL POINT

CONCEPT PLANS FOR
LAKE TAHOE BLVD. CLASS 1 BIKE TRAIL





NOTES:

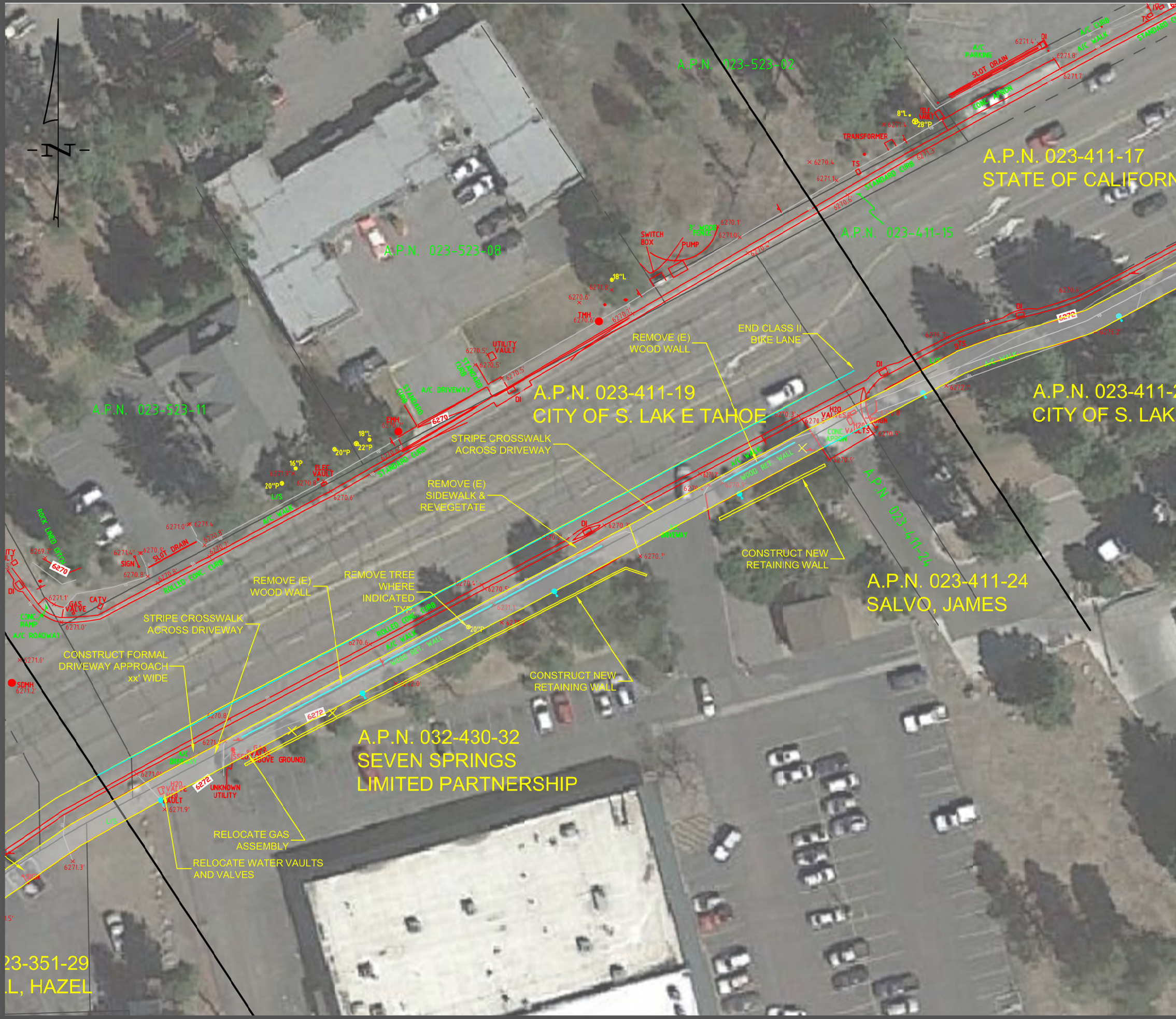
1. THE PROPERTY LINE INFORMATION SHOWN HEREIN IS EL DORADO COUNTY GIS AND DOES NOT REPRESENT A BOUNDARY SURVEY. IT HAS BEEN SCALED FROM GRID TO GROUND SURFACES.
2. THIS SURVEY HAS BEEN PREPARED WITHOUT USE OF A TITLE REPORT UNLESS REFERENCED HEREIN.
3. ONLY VISIBLE FEATURES HAVE BEEN SURVEYED. UNDERGROUND UTILITIES ARE NOT REPRESENTED HEREIN.
4. A.P.N. OWNERSHIP DATA IS FROM THE MOST RECENT EL DORADO COUNTY PARCEL DATA
5. AERIAL IMAGERY IS BEING UTILIZED FOR INFORMATIONAL PURPOSES ONLY AND NOT AS A SURVEY.
6. THE DRAWINGS REPRESENT CONCEPTUAL LAYOUT OF PROPOSED CYCLING AND PEDESTRIAN IMPROVEMENTS. THE ALIGNMENT IS CONCEPTUAL ONLY AND DOES NOT IMPLY FINAL DESIGN.
7. PROPOSED TRAIL AND IMPROVEMENT ALIGNMENT ASSUME FUTURE EASEMENT OWNERSHIP BY CITY.
8. ALL DESIGN ELEMENTS OF CLASS 1 BIKE TRAIL INCLUDING STRIPING, SIGNAGE AND OTHER ANCILLARY ELEMENTS ARE NOT SHOWN HEREIN. FINAL PLANS, SPECIFICATIONS, AND ENGINEERING DOCUMENTS WILL PROVIDE ALL MANDATED ELEMENTS OF TRAIL
9. THESE DRAWINGS DO NOT SHOW IMPROVEMENTS TO INTERSECTIONS IN PROJECT AREA EXCEPT PROPOSED CROSSWALK STRIPING AND RAMPS IN ALIGNMENT WITH PROPOSED TRAIL ONLY. INTERSECT CROSSWALK STRIPING ACROSS LAKE TAHOE BOULEVARD WILL NOT BE INCLUDED IN SCOPE.

SEGMENT DATA TABLE		SHEET C-6			
Tree Removal	< 6"		6" - 12"	12" - 18"	18" +
	0	0	2	0	
Utility Relocations	Fire Hydrant	Manhole	Valve	Elec Vault	
	0	2	3	1	
Easement Area Required	Bike Path S.F.	Utility S.F.	T.C.E - S.F.	Relocate Sign	
	APN 032-290-21	490	0	450	0
	APN 032-290-30	2,100		2,900	1
	APN 032-290-17	750		1,500	
	APN 023-351-29	1,165		1,200	1
	APN 032-430-32	125		225	
Class 1 Trail Improvements	Paved S.F.	Wall L.F.	Fence L.F.	Driveway Approach	
	5,210	0	0	2	
ADA Improvements	Curb Ramps				
	2				
Signage - Proposed	Stop	Yield	Wayfinding	Snow Stakes	
	2	0	1	16	
Striping - Proposed	Class II L.f.	Trail C.L. - L.F.	Stop Bars 1' - EA.	X-walk 1'x10' EA.	
	598	570	2	4	
Pedestrian Lighting	Pole	Fixture	Meter	N-9 Box	
	5	5	1	7	
Landscape Area	Total Area	Sod	Native	Other	

LEGEND

AV	ASPHALT CONCRETE
CATV	CABLE VAULT
CMU	CONC. MASONRY UNIT WALL
CW	COTTONWOOD TREE
DI	DRAIN INLET
F	FIR TREE
FH	FIRE HYDRANT
ICV	IRRIGATION CONTROL VALVE
IMH	INTERCEPTOR MANHOLE
IV	IRRIGATION VAULT
LP	LIGHTPOLE
L	LODGEPOLE PINE
L/S	LANDSCAPE/NATURAL GRND.
P	PINE TREE
SN	SIGN
SDMH	STORM DRAIN MAN HOLE
SSCO	SAN. SEWER CLEAN OUT
SSMH	SAN. SEWER MAN HOLE
TW	TRAVEL WAY
TS	TRAFFIC SIGNAL/VAULT
x77.1	SPOT ELEVATION
EP	EDGE OF PAVEMENT
CP	CONTROL POINT

SEAL <div style="text-align: center;">  </div>	CONCEPT PLANS FOR		LAKE TAHOE BLVD. CLASS 1 BIKE TRAIL		
	DESIGNED/DRAWN J.M.		CHECKED		
	DATE JUNE 2016				
	SCALE NONE				
	JOB NO.				
	SHEET NO.				
C-6		OF TOTAL			



NOTES:

- 1. THE PROPERTY LINE INFORMATION SHOWN HEREIN IS EL DORADO COUNTY GIS AND DOES NOT REPRESENT A BOUNDARY SURVEY. IT HAS BEEN SCALED FROM GRID TO GROUND SURFACES.
- 2. THIS SURVEY HAS BEEN PREPARED WITHOUT USE OF A TITLE REPORT UNLESS REFERENCED HEREIN.
- 3. ONLY VISIBLE FEATURES HAVE BEEN SURVEYED. UNDERGROUND UTILITIES ARE NOT REPRESENTED HEREIN.
- 4. A.P.N. OWNERSHIP DATA IS FROM THE MOST RECENT EL DORADO COUNTY PARCEL DATA
- 5. AERIAL IMAGERY IS BEING UTILIZED FOR INFORMATIONAL PURPOSES ONLY AND NOT AS A SURVEY.
- 6. THE DRAWINGS REPRESENT CONCEPTUAL LAYOUT OF PROPOSED CYCLING AND PEDESTRIAN IMPROVEMENTS. THE ALIGNMENT IS CONCEPTUAL ONLY AND DOES NOT IMPLY FINAL DESIGN.
- 7. PROPOSED TRAIL AND IMPROVEMENT ALIGNMENT ASSUME FUTURE EASEMENT OWNERSHIP BY CITY.
- 8. ALL DESIGN ELEMENTS OF CLASS 1 BIKE TRAIL INCLUDING STRIPING, SIGNAGE AND OTHER ANCILLARY ELEMENTS ARE NOT SHOWN HEREIN. FINAL PLANS, SPECIFICATIONS, AND ENGINEERING DOCUMENTS WILL PROVIDE ALL MANDATED ELEMENTS OF TRAIL
- 9. THESE DRAWINGS DO NOT SHOW IMPROVEMENTS TO INTERSECTIONS IN PROJECT AREA EXCEPT PROPOSED CROSSWALK STRIPING AND RAMPS IN ALIGNMENT WITH PROPOSED TRAIL ONLY. INTERSECT CROSSWALK STRIPING ACROSS LAKE TAHOE BOULEVARD WILL NOT BE INCLUDED IN SCOPE.

SEGMENT DATA TABLE		SHEET C-7			
Tree Removal	< 6"	6" - 12"	12" - 18"	18" +	
	0	0	0	1	
Utility Relocations	Fire Hydrant	Manhole	Valve	Elec Vault	
	1	3	3	1	
Easement Area Required	Bike Path S.F.	Utility S.F.	T.C.E. S.F.	Relocate Sign	
	APN 032-430-32	2,250	0	3,400	
	APN 023-411-24	150	0	220	
	APN 023-411-25	0	0	0	
Class 1 Trail Improvements	Paved S.F.	Wall L.F.	Fence L.F.	Driveway Approach	
	3,940	250	0	2	
ADA Improvements	Curb Ramps				
	0				
Signage - Proposed	Stop	Yield	Wayfinding	Snow Stakes	
	0	0	1	20	
Striping - Proposed	Class II L.F.	Trail C.L. - L.F.	Stop Bars 1' - EA.	X-walk 1'x10' EA.	
	175	200	2	3	
Pedestrian Lighting	Pole	Fixture	Meter	N-9 Box	
	5	5	0	6	
Landscape Area	Total Area	Sod	Native	Other	

LEGEND	
A/C	ASPHALT CONCRETE
CATV	CABLE VAULT
CMU	CONC. MASONRY UNIT WALL
CW	COTTONWOOD TREE
DI	DRAIN INLET
F	FIR TREE
FH	FIRE HYDRANT
ICV	IRRIGATION CONTROL VALVE
IMH	INTERCEPTOR MANHOLE
IV	IRRIGATION VAULT
LP	LIGHTPOLE
L	LODGEPOLE PINE
L/S	LANDSCAPE/NATURAL GRND.
P	PINE TREE
SN	SIGN
SDMH	STORM DRAIN MAN HOLE
SSC0	SAN. SEWER CLEAN OUT
SSMH	SAN. SEWER MAN HOLE
TW	TRAVEL WAY
TS	TRAFFIC SIGNAL/VAULT
x77.1	SPOT ELEVATION
EP	EDGE OF PAVEMENT
CP	CONTROL POINT

REVISIONS

BENCH MARK

NUMBER 7-A

MARK BENCHMARK

ELEVATION 6693.90' DATUM NAVD83

DESCRIPTION

RAISED LTRS

CSR ON FIRE HYDRANT

CSLT LINE NO. 50

CITY OF SOUTH LAKE TAHOE

PUBLIC WORKS DEPARTMENT

1500 LAKE TAHOE BLVD. SUITE 100

SOUTH LAKE TAHOE, CA 96150

RAY JARVIS - CITY ENGINEER

Ph: (530) 542-6030 Fax: (530) 541-7524

SEAL

CONCEPT PLANS FOR LAKE TAHOE BLVD. CLASS 1 BIKE TRAIL

DESIGNED/DRAWN

J.M.

CHECKED

DATE

JUNE 2016

SCALE

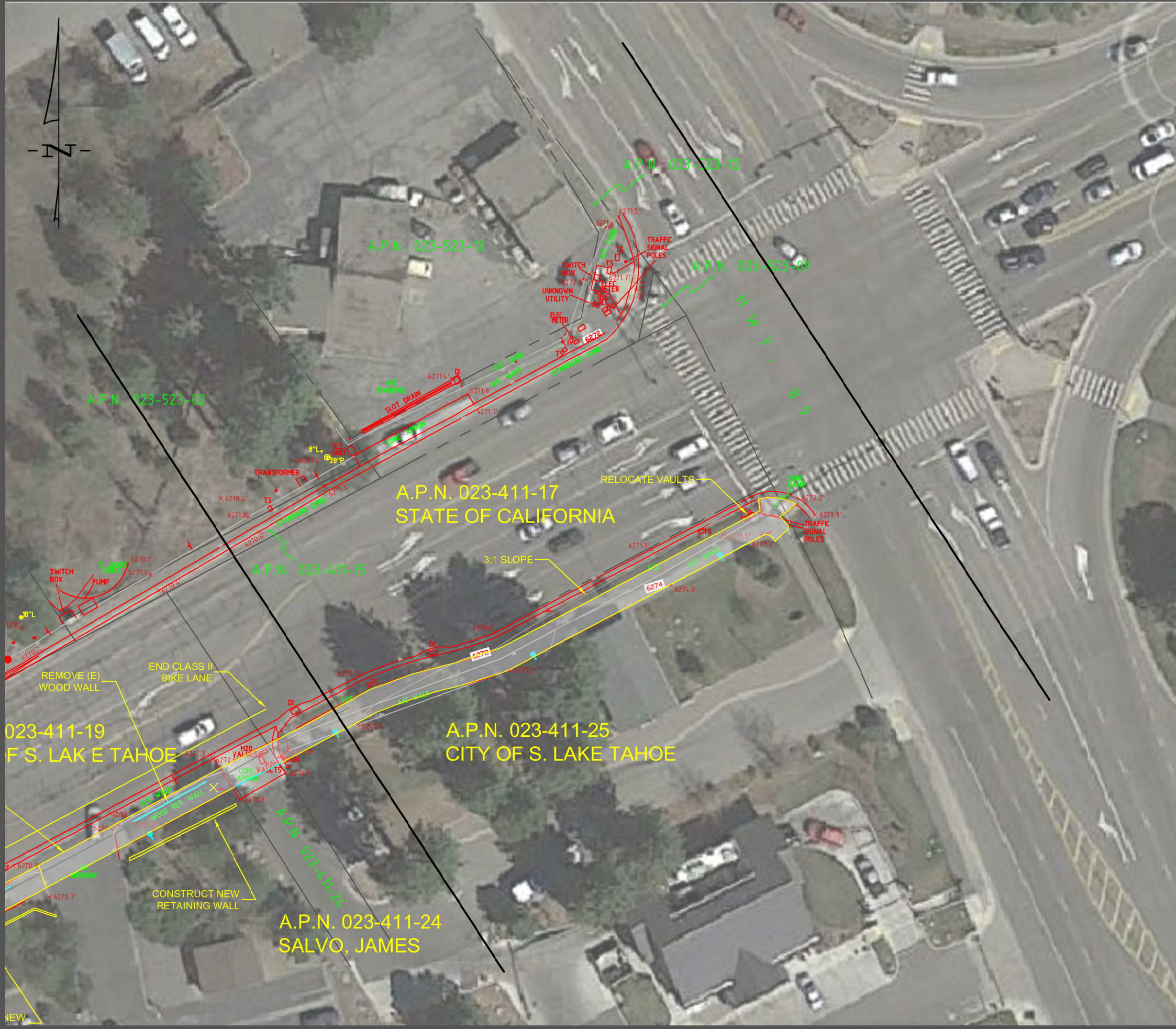
NONE

JOB NO.

SHEET NO.

C-7

OF TOTAL



- NOTES:**
1. THE PROPERTY LINE INFORMATION SHOWN HEREIN IS EL DORADO COUNTY GIS AND DOES NOT REPRESENT A BOUNDARY SURVEY. IT HAS BEEN SCALED FROM GRID TO GROUND SURFACES.
 2. THIS SURVEY HAS BEEN PREPARED WITHOUT USE OF A TITLE REPORT UNLESS REFERENCED HEREIN.
 3. ONLY VISIBLE FEATURES HAVE BEEN SURVEYED. UNDERGROUND UTILITIES ARE NOT REPRESENTED HEREIN.
 4. A.P.N. OWNERSHIP DATA IS FROM THE MOST RECENT EL DORADO COUNTY PARCEL DATA
 5. AERIAL IMAGERY IS BEING UTILIZED FOR INFORMATIONAL PURPOSES ONLY AND NOT AS A SURVEY.
 6. THE DRAWINGS REPRESENT CONCEPTUAL LAYOUT OF PROPOSED CYCLING AND PEDESTRIAN IMPROVEMENTS. THE ALIGNMENT IS CONCEPTUAL ONLY AND DOES NOT IMPLY FINAL DESIGN.
 7. PROPOSED TRAIL AND IMPROVEMENT ALIGNMENT ASSUME FUTURE EASEMENT OWNERSHIP BY CITY.
 8. ALL DESIGN ELEMENTS OF CLASS 1 BIKE TRAIL INCLUDING STRIPING, SIGNAGE AND OTHER ANCILLARY ELEMENTS ARE NOT SHOWN HEREIN. FINAL PLANS, SPECIFICATIONS, AND ENGINEERING DOCUMENTS WILL PROVIDE ALL MANDATED ELEMENTS OF TRAIL
 9. THESE DRAWINGS DO NOT SHOW IMPROVEMENTS TO INTERSECTIONS IN PROJECT AREA EXCEPT PROPOSED CROSSWALK STRIPING AND RAMPS IN ALIGNMENT WITH PROPOSED TRAIL ONLY. INTERSECT CROSSWALK STRIPING ACROSS LAKE TAHOE BOULEVARD WILL NOT BE INCLUDED IN SCOPE.

SEGMENT DATA TABLE		SHEET C-8			
Tree Removal	< 6"	6" - 12"	12" - 18"	18" +	
	0	0	0	0	
Utility Relocations	Fire Hydrant	Manhole	Valve	Elec Vault	
	0	1	3	1	
Easement Area Required	Bike Path S.F.	Utility S.F.	T.C.E. S.F.	Relocate Sign	
	APN 023-411-25	0	0	0	0
Class 1 Trail Improvements	Paved S.F.	Wall L.F.	Fence L.F.	Driveway Approach	
	2,200	0	0	0	
ADA Improvements	Curb Ramps				
	0				
Signage - Proposed	Stop	Yield	Wayfinding	Snow Stakes	
	0	0	1	20	
Striping - Proposed	Class II L.f.	Trail C.L. - L.F.	Stop Bars 1' - EA.	X-walk 1'x10' EA.	
	0	200	0	0	
Pedestrian Lighting	Pole	Fixture	Meter	N-9 Box	
	2	2	0	2	
Landscape Area	Total Area	Sod	Native	Other	

LEGEND	
A/C	ASPHALT CONCRETE
CATV	CABLE VAULT
CMU	CONC. MASONRY UNIT WALL
CW	COTTONWOOD TREE
DI	DRAIN INLET
F	FIR TREE
FH	FIRE HYDRANT
ICV	IRRIGATION CONTROL VALVE
IMH	INTERCEPTOR MANHOLE
IV	IRRIGATION VAULT
LP	LIGHTPOLE
L	LODGEPOLE PINE
L/S	LANDSCAPE/NATURAL GRND.
P	PINE TREE
SN	SIGN
SDMH	STORM DRAIN MAN HOLE
SSC0	SAN. SEWER CLEAN OUT
SSMH	SAN. SEWER MAN HOLE
TW	TRAVEL WAY
TS	TRAFFIC SIGNAL/VAULT
x77.1	SPOT ELEVATION
EP	EDGE OF PAVEMENT
CP	CONTROL POINT

REVISIONS

BENCH MARK

NUMBER 7-A MARK BENCHMARK
ELEVATION 6693.90' DATUM NAVD83
DESCRIPTION RAISED LTRS
"SR" ON FIRE HYDRANT
CST LINE NO. 50

CITY OF SOUTH LAKE TAHOE
PUBLIC WORKS DEPARTMENT
1500 LAKE TAHOE BLVD. #100
SOUTH LAKE TAHOE, CA 96150
RAY JARVIS - CITY ENGINEER
Ph: (530) 542-6030 Fax: (530) 541-7524

SEAL

CONCEPT PLANS FOR
LAKE TAHOE BLVD. CLASS 1 BIKE TRAIL

DESIGNED/DRAWN
J.M.

CHECKED

DATE
JUNE 2016

SCALE
NONE

JOB NO.

SHEET NO.
C-8
OF TOTAL