

# Nader and Brigitte Panah Violation

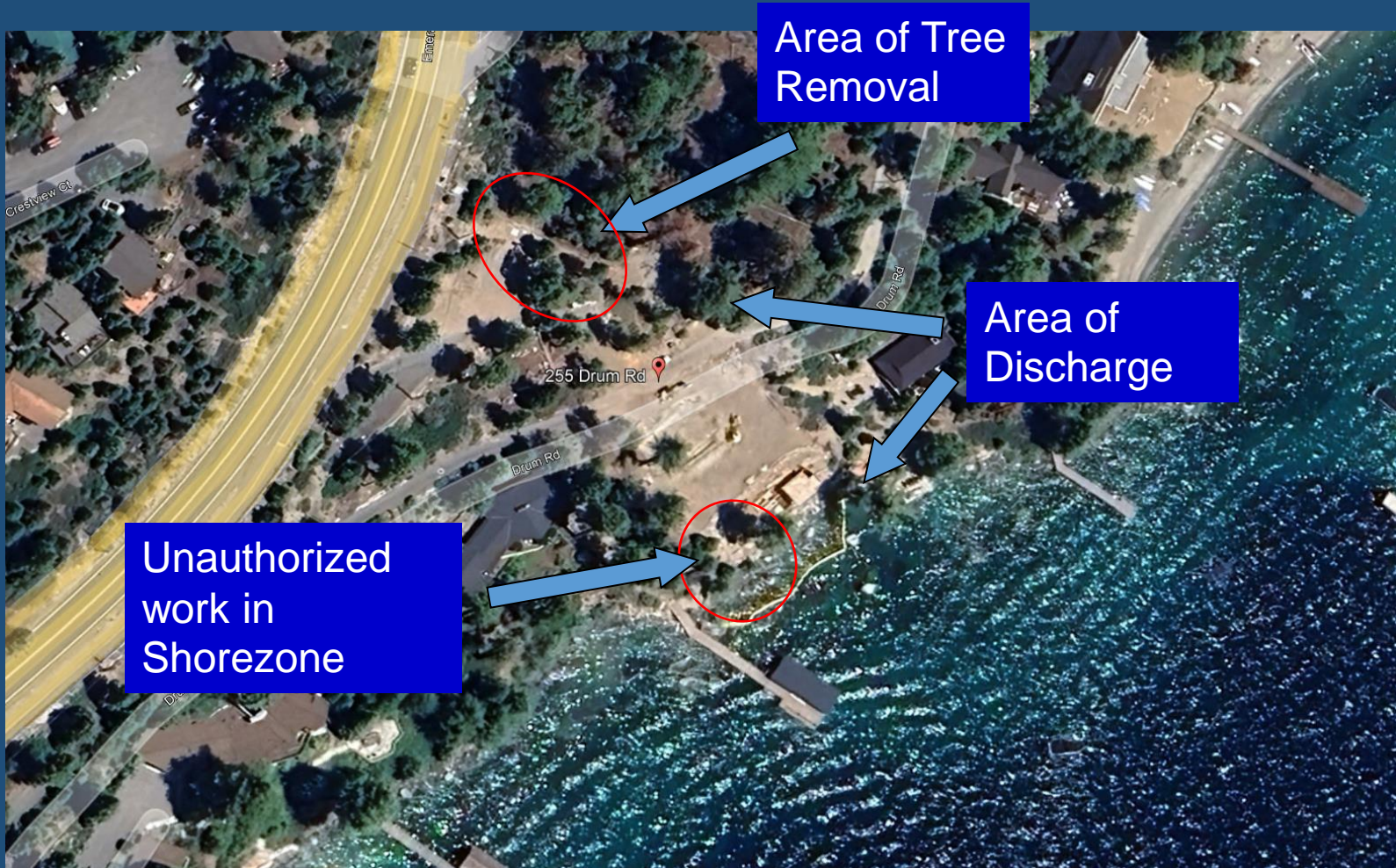
255 Drum Road,  
El Dorado County, CA

Resolution of Enforcement  
Action

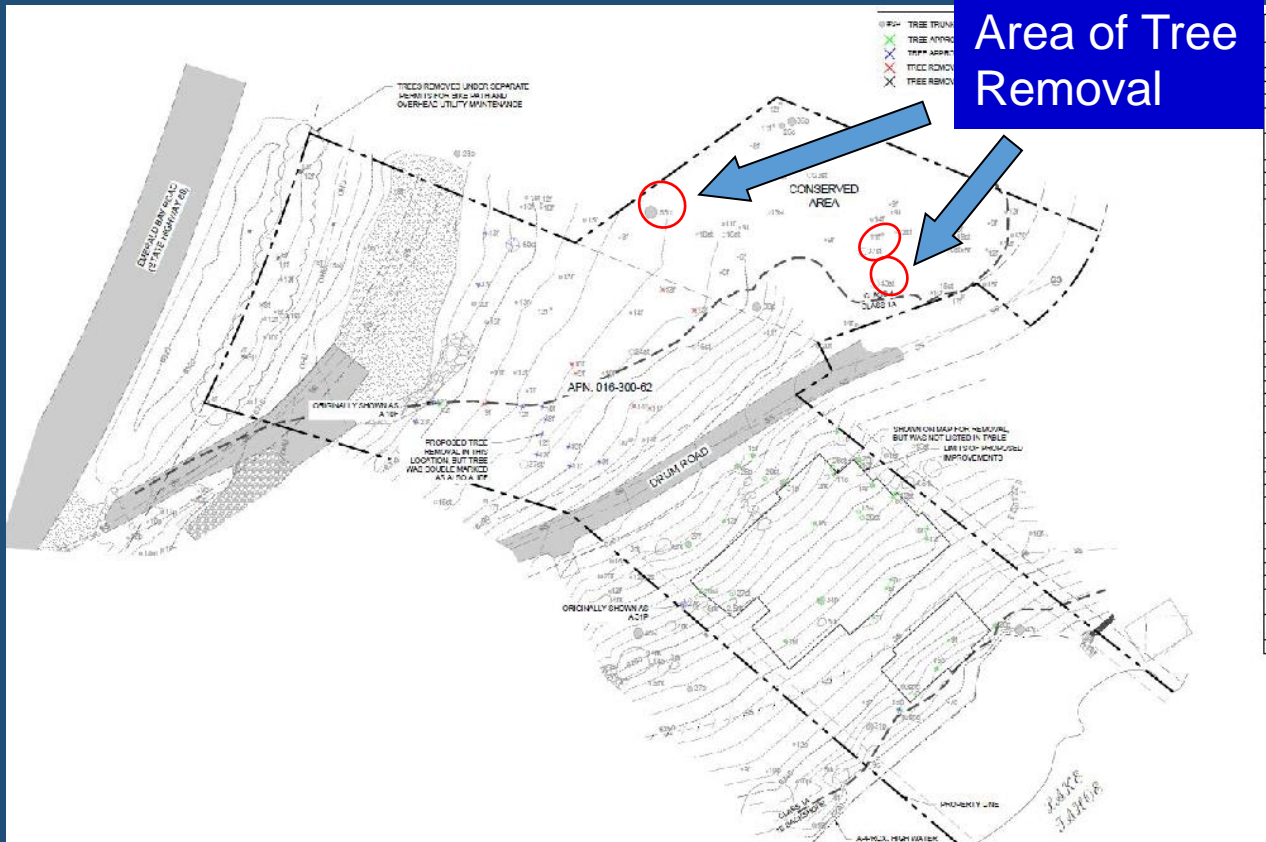
April 24, 2024



TAHOE  
REGIONAL  
PLANNING  
AGENCY



# Unauthorized Tree Removal



# Unauthorized Disturbance in Conservation Area



# Discharge to Drum Road



# Failure to Maintain Adequate BMPs



# Discharge to Lake Tahoe

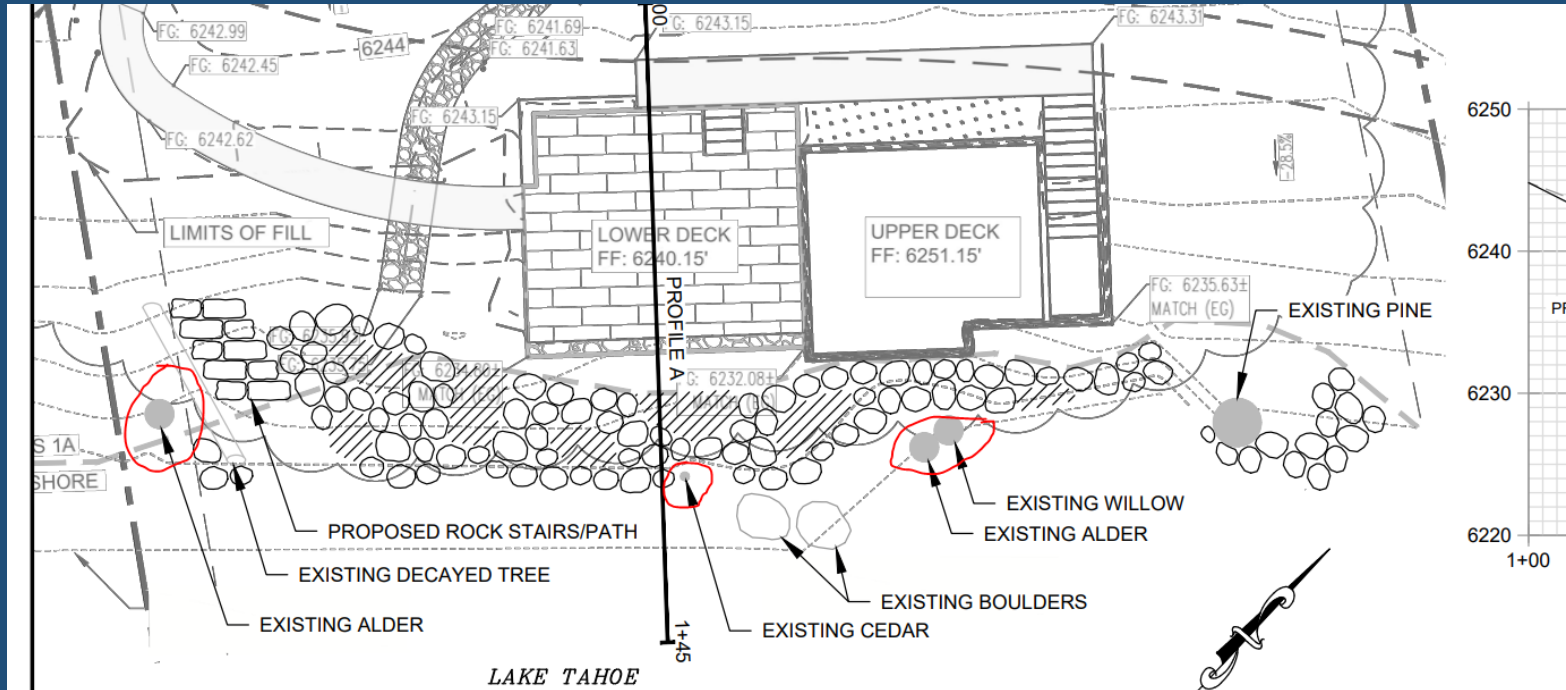




# Unauthorized Construction in Shorezone



# Unauthorized Tree Removal in Shorezone



# Violations

Over 14 permit and code violations involving:

- The removal of three trees over 30 inches in a conservation area,
- Material damage to trees,
- Recontouring and grading in the conservation area,
- Failure to maintain proper temporary BMPs resulting in discharge from the site to both a roadway and the waters of Lake Tahoe,
- Unauthorized construction of a walkway and steps in the shorezone, and
- Removal of shorezone vegetation used for scenic analysis including one tree larger than 6 inches dbh.

# Staff Recommendation

- Remit a \$55,000 penalty to TRPA;
- Obtain a permit for all revisions;
- Restore all disturbed areas on the Property;  
and
- Plant native conifers in the conservation area and shorezone.