

TAHOE REGIONAL PLANNING AGENCY 2012 BEST IN THE BASIN AWARDS

**Presented at the TRPA Governing Board
Meeting March 27, 2013**

STORMWATER BMPS: EL DORADO COUNTY

SHAKORI DRIVE MAINTENANCE YARD BMP RETROFIT PROJECT, MEYERS



CONTRACTOR: EL DORADO COUNTY DEPARTMENT OF TRANSPORTATION, MAINTENANCE & OPERATIONS DIVISION
DESIGNED BY: COUNTY OF EL DORADO DEPARTMENT OF TRANSPORTATION, TAHOE ENGINEERING UNIT

EROSION CONTROL PROJECT: HYBRID BMP AND RAIN GARDEN PROJECT, INCLINE VILLAGE



DESIGN: NEVADA TAHOE CONSERVATION DISTRICT,
WASHOE COUNTY PUBLIC WORKS DEPARTMENT
CONTRACTOR: GRADEX CONSTRUCTION
SPECIAL ASSISTANCE: DESERT RESEARCH INSTITUTE
FOR MONITORING

FOREST FUEL REDUCTION PROJECT: COME AGAIN MEADOW, 3 RING ROAD RUBICON BAY



FOREST FUEL REDUCTION PROJECT: COME AGAIN MEADOW, 3 RING ROAD RUBICON BAY



PROJECT PARTNERS: MEEKS BAY FIRE PROTECTION DISTRICT, TAMARACK MUTUAL WATER COMPANY,
INTEGRATED ENVIRONMENTAL RESTORATION SERVICES

FOREST FUEL REDUCTION HONORABLE MENTION: LOGAN CREEK COMMUNITY DEFENSIBLE SPACE, GLENBROOK



Before

PROJECT PARTNERS: TAHOE DOUGLAS FIRE
PROTECTION DISTRICT ZEPHYR FIRE CREW,
LOGAN CREEK COMMUNITY HOMEOWNERS,
US FOREST SERVICE LAKE TAHOE BASIN
MANAGEMENT UNIT



After

COMMERCIAL PROJECT: CEDAR GLEN LODGE TAHOE VISTA



ARCHITECT: WARD YOUNG
PLANNING: KAUFMAN PLANNING
ENGINEER: FERRELL CIVIL ENGINEERING
CONTRACTOR: ROBERT MORKEN CONSTRUCTION
EXCAVATING: GOODRICH EXCAVATING



RESIDENTIAL REMODEL AND GREEN BUILDING PROJECT: OTTAWA DRIVE GARAGE AND GUEST HOUSE PROJECT, MEYERS, CALIFORNIA

ARCHITECTURAL DESIGN & GENERAL CONTRACTOR:
HEALTHY HOME CONSULTANTS

STRUCTURAL ENGINEER:
BUILDING CONCEPTS



RESIDENTIAL REBUILD PROJECT: THE PARKER FAMILY RETREAT TAHOMA



DESIGN & ENGINEERING: SANDBOX
CONTRACTOR: LOVERDE BUILDERS
PERMITTING & PLANNING: JAN BRISCO

PUBLIC SERVICE PROJECT: DIAMOND PEAK SKIER SERVICES BUILDING, INCLINE VILLAGE



ARCHITECT: COLLABORATIVE DESIGN STUDIO, CIVIL ENGINEER/LANDSCAPE ARCHITECT: LUMOS & ASSOCIATES, STRUCTURAL ENGINEER: FORBES ENGINEERING, MECHANICAL ENGINEER: CAPITAL ENGINEERING CONSULTANTS, ELECTRICAL ENGINEER: MSA ENGINEERING, CONTRACTOR: UNITED CONSTRUCTION

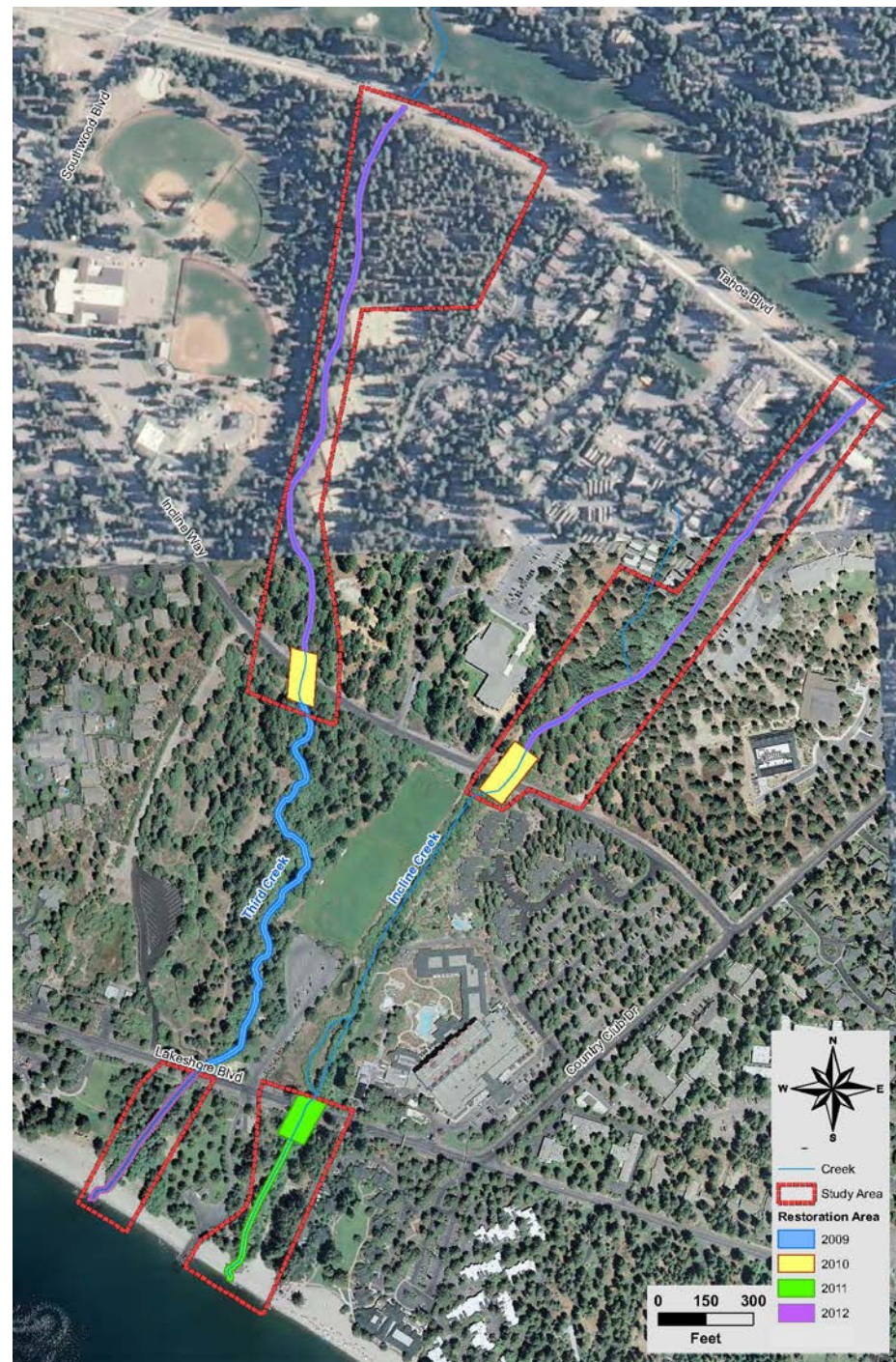
RESTORATION PROJECT: THIRD CREEK

RESTORATION PHASE IV INCLINE VILLAGE



ENGINEERING, PLANNING AND CONSTRUCTION
MANAGEMENT: CARDNO ENTRIX
GENERAL CONTRACTOR: MKD CONSTRUCTION AND
KELLEY EROSION CONTROL

RESTORATION: THIRD CREEK RESTORATION PROJECT ALL PHASES COMPLETE, INCLINE VILLAGE



RESTORATION PROJECT: THIRD CREEK

RESTORATION

PHASE IV

INCLINE VILLAGE



ENGINEERING, PLANNING AND CONSTRUCTION
MANAGEMENT: CARDNO ENTRIX
GENERAL CONTRACTOR: MKD CONSTRUCTION AND
KELLEY EROSION CONTROL

RESTORATION PROJECT HONORABLE MENTION: BURGUNDY HILLS SOIL AND STREAM ENVIRONMENT ZONE RESTORATION PROJECT, INCLINE VILLAGE, NEVADA

Before



After



PROJECT PARTNER: INCLINE VILLAGE GENERAL
IMPROVEMENT DISTRICT
ENGINEERING & PLANNING: CARDNO/ENTRIX
CONSTRUCTION: ASPEN DEVELOPERS, SOIL TECH



SHOREZONE PROJECT: LAKEVIEW COMMONS EL DORADO BEACH, SOUTH LAKE TAHOE



LANDSCAPE ARCHITECTURE: ROYSTON,
HANAMOTTO, ALLEY & ABBEY
ARCHITECTURE: EHDD



GENERAL CONTRACTOR: CLARK & SULLIVAN
PROJECT MANAGER: DEB VREELAND
ENGINEERS: JWA, ANDRES/WARE

RECREATION PROJECT: LAKESIDE TRAIL TAHOE CITY



CIVIL ENGINEER/PRIME CONSULTANT: AUERBACH ENGINEERING CORPORATION, TAHOE CITY, CALIFORNIA

LANDSCAPE ARCHITECT: LANDESIGN, SEBASTOPOL, CALIFORNIA

ENVIRONMENTAL CONSULTANT: FOOTHILL & ASSOCIATES, ROCKLIN, CALIFORNIA

GEOTECHNICAL ENGINEER: MARVIN DAVIS & ASSOCIATES, RENO, NEVADA

ELECTRICAL ENGINEER: SA ENGINEERING, TRUCKEE, CALIFORNIA

STRUCTURAL ENGINEER: FELLOWS STRUCTURAL ENGINEERS, RENO, NEV. & FERRARI-SHIELDS, RENO, NEV.

CONSTRUCTION CONTRACTORS: PERATA EXCAVATION, CORREA CONSTRUCTION, SYBLON-REID CONTRACTORS, ASPEN

DEVELOPMENT, CAMPBELL CONSTRUCTION COMPANY



MIXED-USE PROJECT: TAHOE CITY MARINA MASTER PLAN



ARCHITECTURE: BLUEWATER DESIGN GROUP
ENGINEERING: GARY DAVIS GROUP, AUERBACH
ENGINEERING



CONTRACTORS: TAHOE MARINE EXCAVATING,
SIERRA EARTHWORKS
LANDSCAPING: PEAK LANDSCAPING