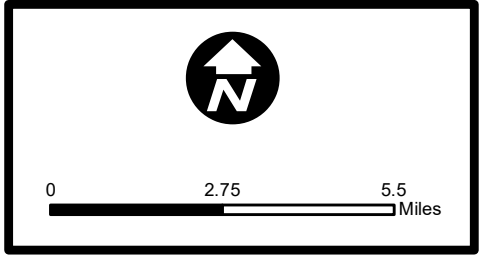
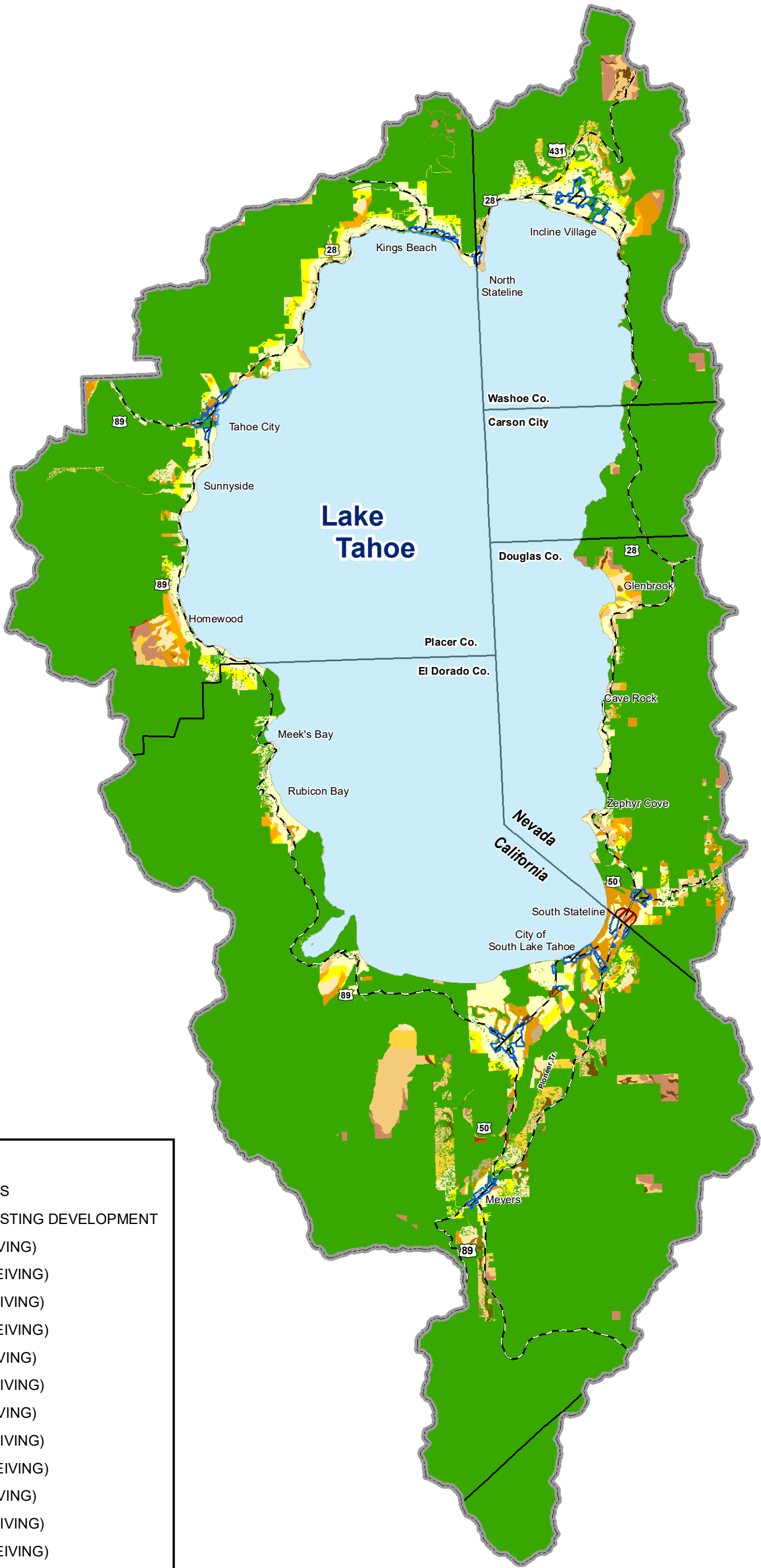


Map 1 Conceptual Regional Land Use Lake Tahoe Region



TRPA MAP DISCLAIMER: This map was developed and produced by the TRPA GIS department. It is provided for reference only and is not intended to show map scale accuracy or all inclusive map features. The material on this map was compiled using the most current data available, but the data is dynamic and accuracy cannot be guaranteed. Document Path: F:\GIS\MXDS\Regional Plan Update\Jan2014Recreated\Map1_ConceptualRegLandUse_2017amendment.mxd



- TRPA JURISDICTION
- USFS AND STATE PARKS
- TRANSFER RATIOS FOR EXISTING DEVELOPMENT
- 1: 1 (SENDING: RECEIVING)
 - 1: 1.25 (SENDING: RECEIVING)
 - 1: 1.5 (SENDING: RECEIVING)
 - 1: 1.75 (SENDING: RECEIVING)
 - 1: 2 (SENDING: RECEIVING)
 - 1: 2.5 (SENDING: RECEIVING)
 - 1: 3 (SENDING: RECEIVING)
 - 1: 3.5 (SENDING: RECEIVING)
 - 1: 3.75 (SENDING: RECEIVING)
 - 1: 4 (SENDING: RECEIVING)
 - 1: 4.5 (SENDING: RECEIVING)
 - 1: 5.25 (SENDING: RECEIVING)
 - 1: 6 (SENDING: RECEIVING)

Note: See Land Use Policy LU-4.1 for definitions.
Transfer ratio of 1:3 means that in exchange for removing one unit that is currently built and restoring this land, 3 units can be transferred and developed in a Center area. Field verification of eligibility (such as a land capability verification) is required. Please see TRPA Code Section 51.5.

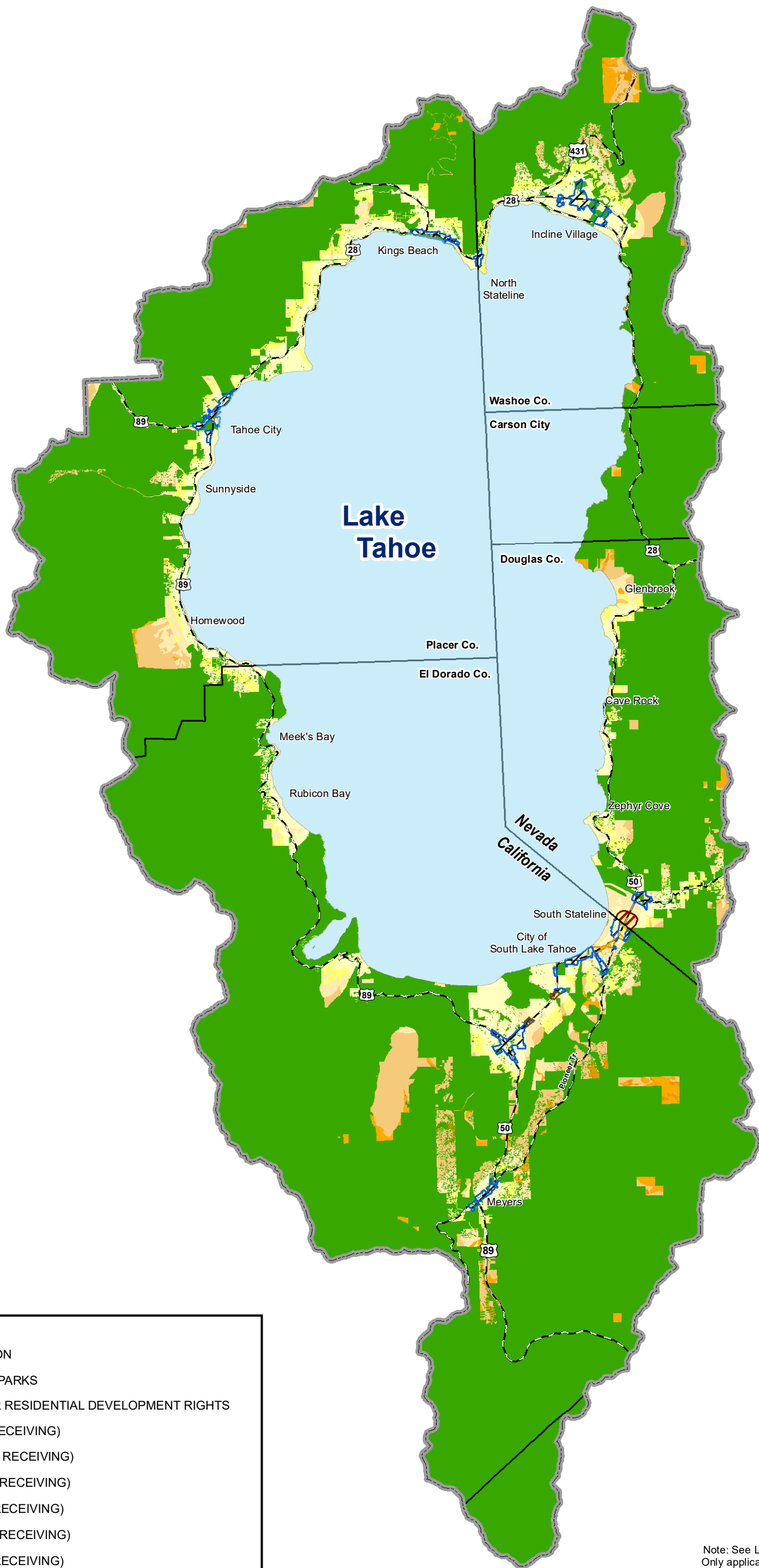
Map 2
Conceptual Ratios for
Transfer of Existing Development
December 12, 2012



TAHOE
REGIONAL
PLANNING
AGENCY



0 2.75 5.5 Miles



- TRPA JURISDICTION
- USFS AND STATE PARKS
- TRANSFER RATIOS FOR RESIDENTIAL DEVELOPMENT RIGHTS
- 1: 1 (SENDING: RECEIVING)
 - 1: 1.25 (SENDING: RECEIVING)
 - 1: 1.5 (SENDING: RECEIVING)
 - 1: 2 (SENDING: RECEIVING)
 - 1: 2.5 (SENDING: RECEIVING)
 - 1: 3 (SENDING: RECEIVING)

Note: See Land Use Policy LU-4.1 for definitions.
Only applicable for vacant parcels with residential development rights. Transfer ratio of 1:3 means that in exchange for preserving a sending parcel in perpetuity, 3 units can be transferred and developed in an eligible Center area. Field verification of eligibility (such as a land capability verification) is required. Please see TRPA Code Section 51.3.



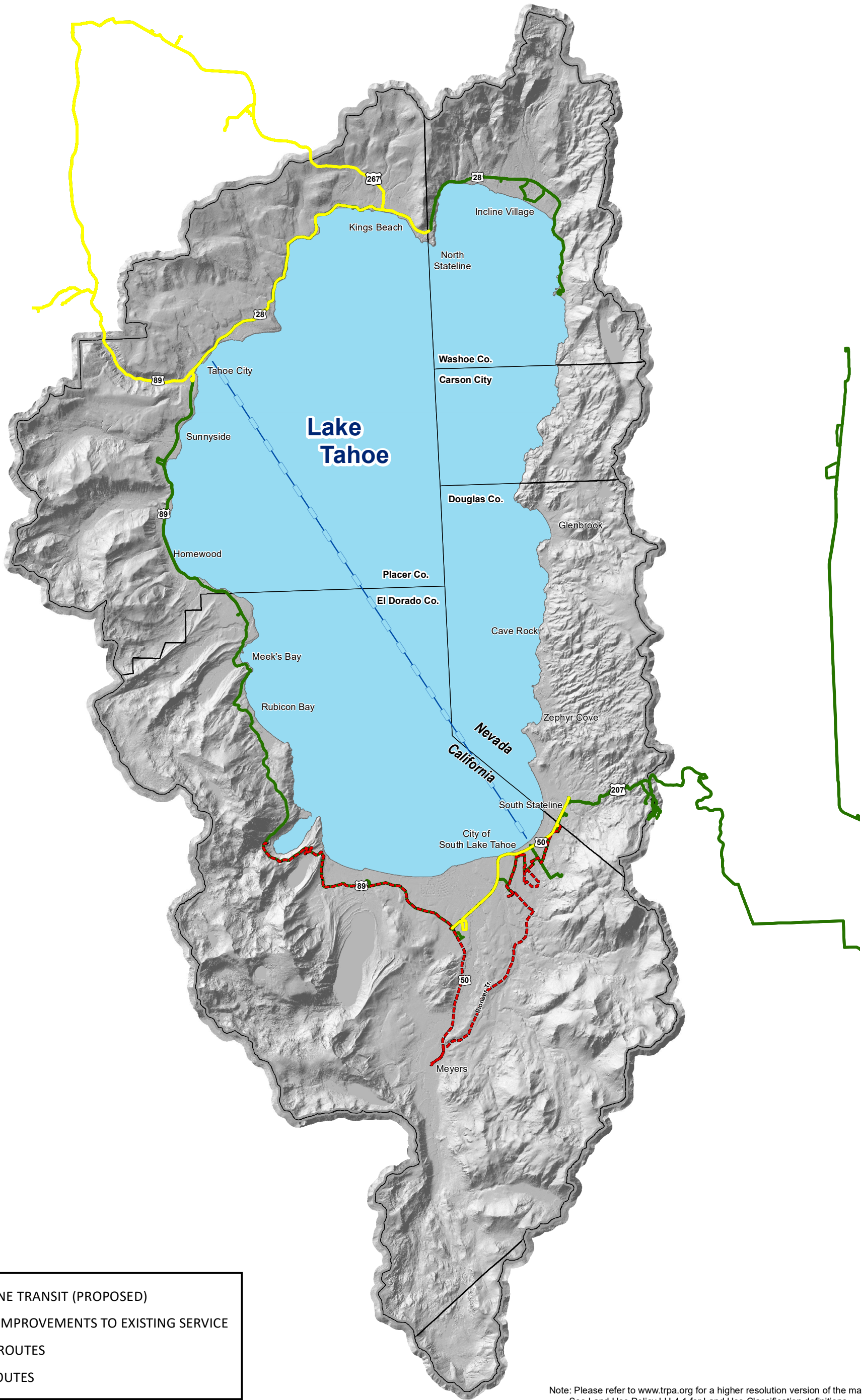
**TAHOE
REGIONAL
PLANNING
AGENCY**

Map 3 Conceptual Ratios for Transfer of Residential Development Rights December 12, 2012



0 2.75 5.5 Miles

To Truckee



- WATERBORNE TRANSIT (PROPOSED)
- PROPOSED IMPROVEMENTS TO EXISTING SERVICE
- PROPOSED ROUTES
- EXISTING ROUTES

Note: Please refer to www.trpa.org for a higher resolution version of the map
See Land Use Policy LU-4.1 for Land Use Classification definitions

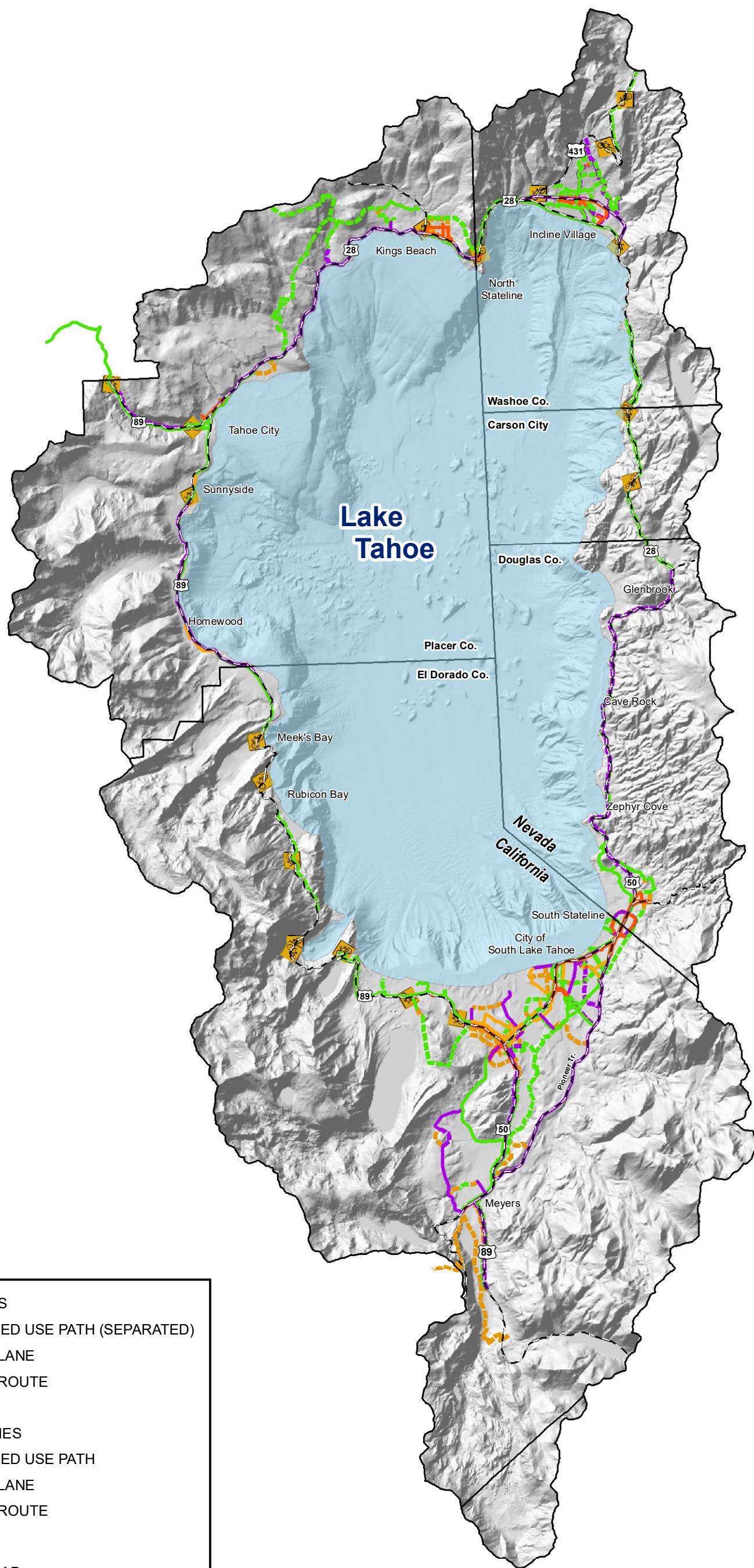


**TAHOE
REGIONAL
PLANNING
AGENCY**

Map 4 Conceptual Transit Services January 2018



0 2.75 5.5
Miles



Note: Includes updates from the 2017 adopted Linking Tahoe Regional Transportation Plan.

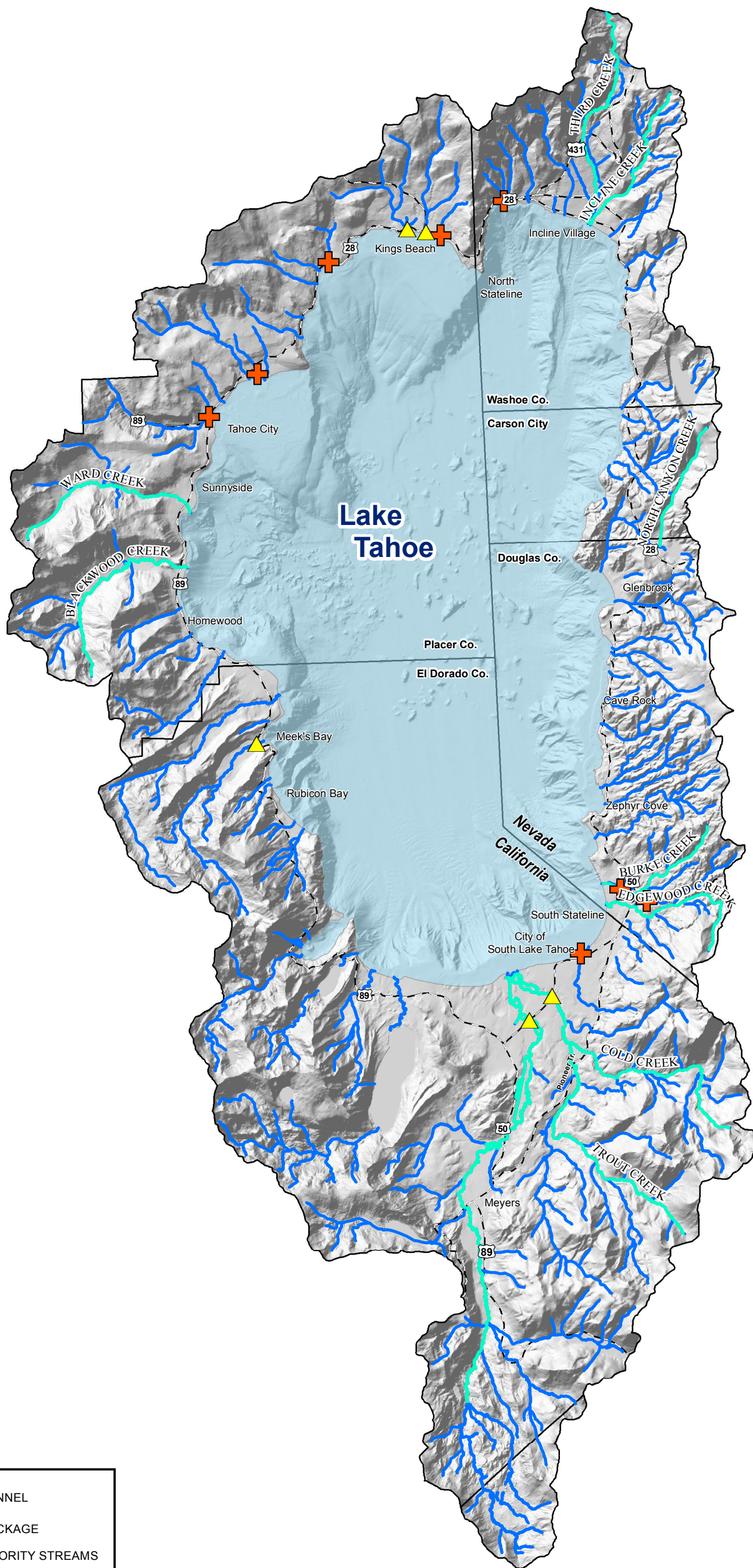






**TAHOE
REGIONAL
PLANNING
AGENCY**

**Map 5
Conceptual Bicycle & Pedestrian Facilities
December 12, 2012**



0 2.75 5.5
Miles



-  BELOW GROUND CHANNEL
-  PARTIAL STREAM BLOCKAGE
-  EIP RESTORATION PRIORITY STREAMS
-  STREAMS

Note: Please refer to www.trpa.org for a higher resolution version of the map
See Land Use Policy LU-4.1 for Land Use Classification definitions



**TAHOE
REGIONAL
PLANNING
AGENCY**

**Map 6
Conceptual Stream Corridor Impediments
December 12, 2012**



0 2.75 5.5 Miles