

SR 89 Recreation Corridor Management Plan

PDT Meeting #2



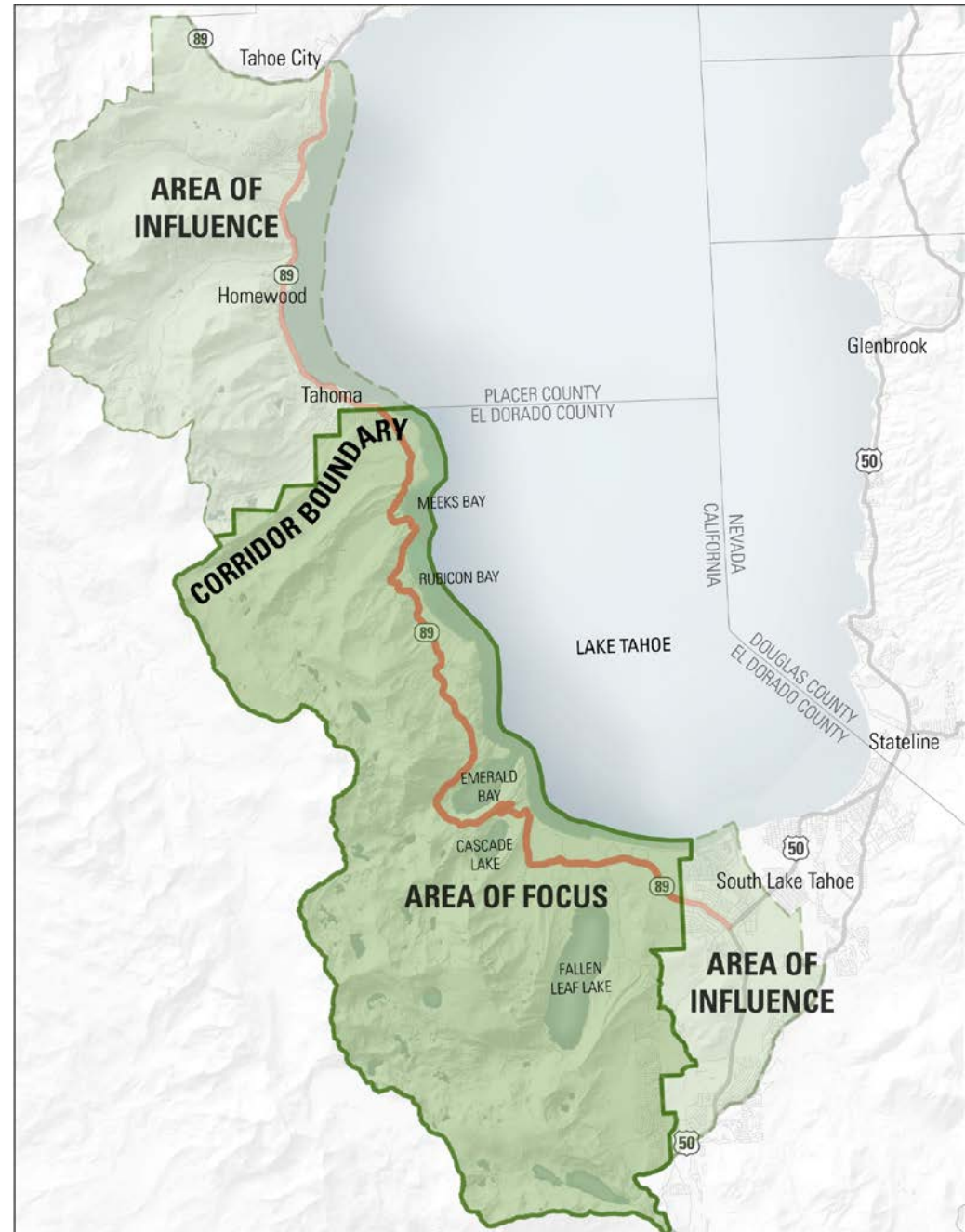
DESIGN WORKSHOP | LSC | ORCA | KAREN MULLEN-EHLY | NELSON/NYGAARD

May 2, 2018

corridor project area

SR 89 Corridor

- Area of Focus/CMP Boundary:
SR 89 from West Way in EDC to EDC/PC line in Tahoma
- Emphasis on problem areas of Emerald Bay and Camp Rich
- Areas of Influence:
 - Rim to Lake
 - “Y” to “Wye”

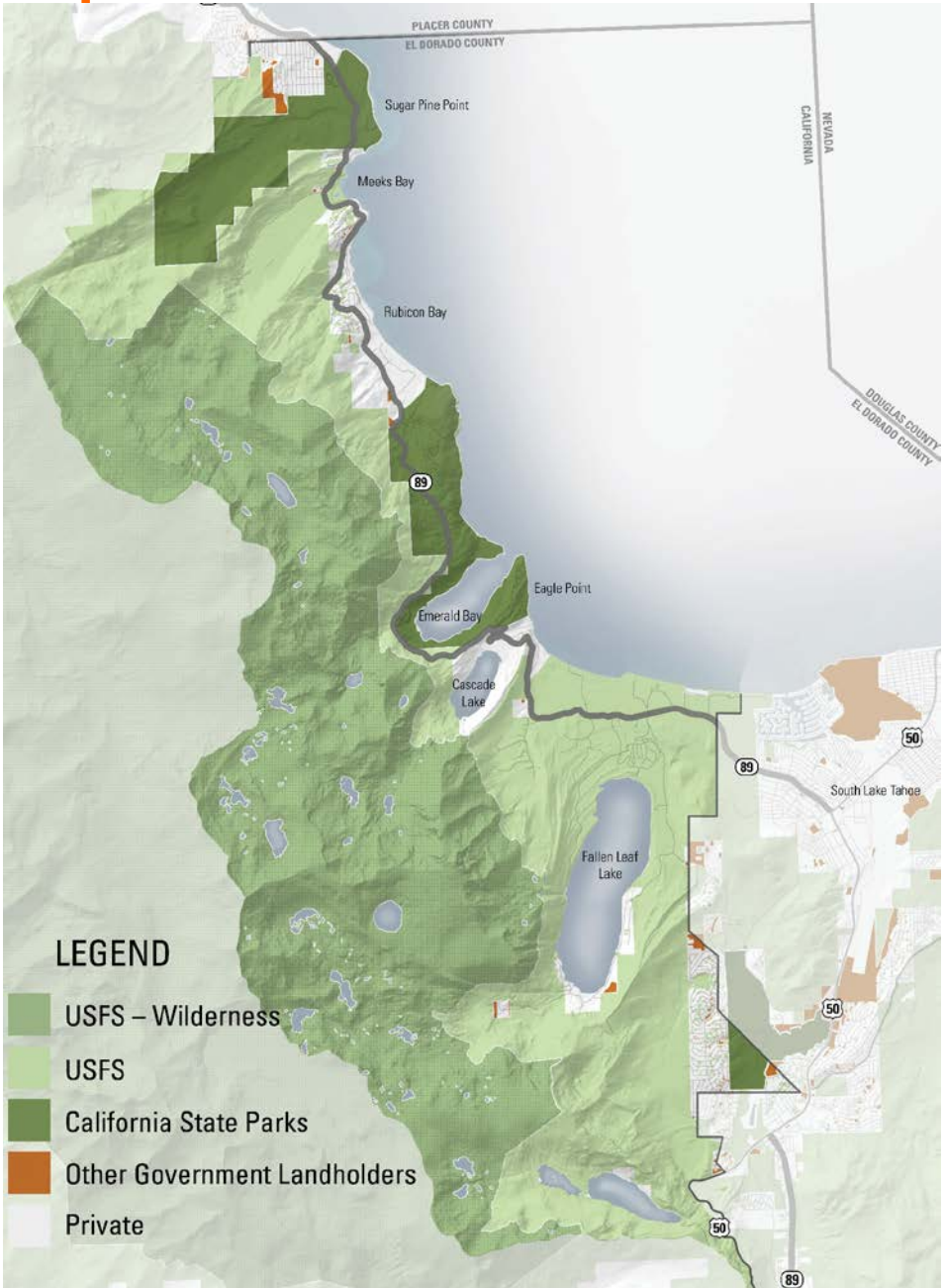


corridor ownership

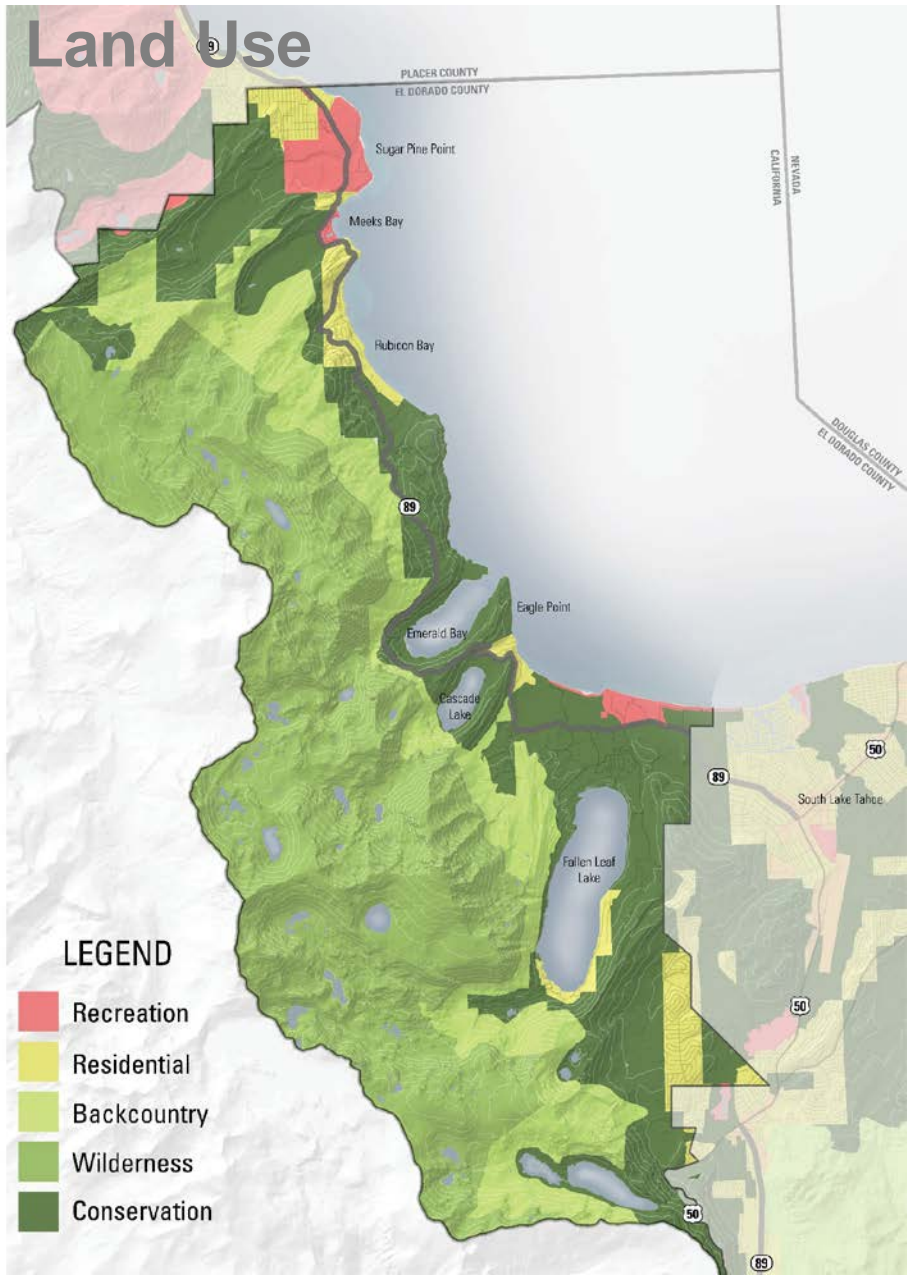
113,125
acres

24%
of Basin
acreage

97.2%
public lands



corridor existing conditions



103
TAUs

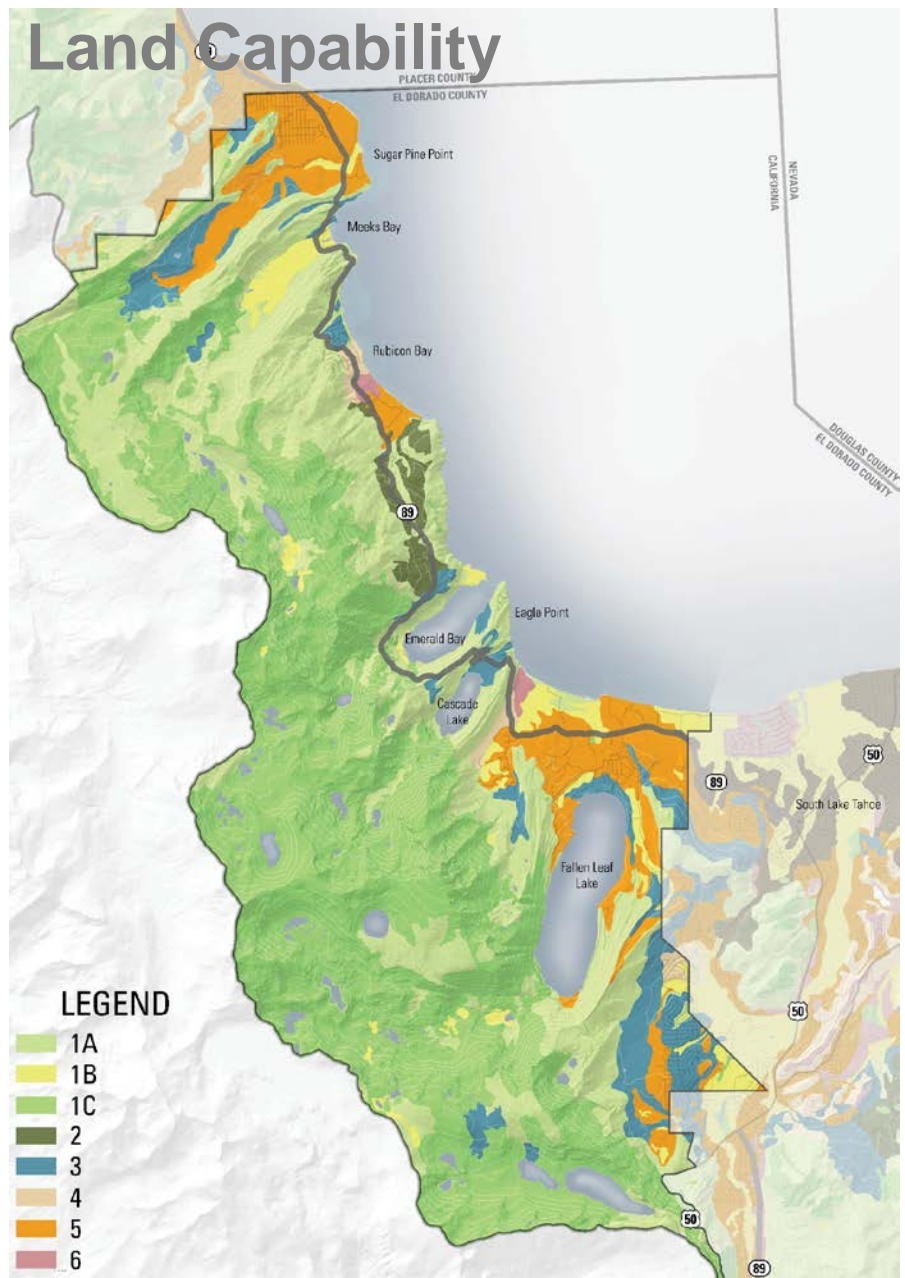
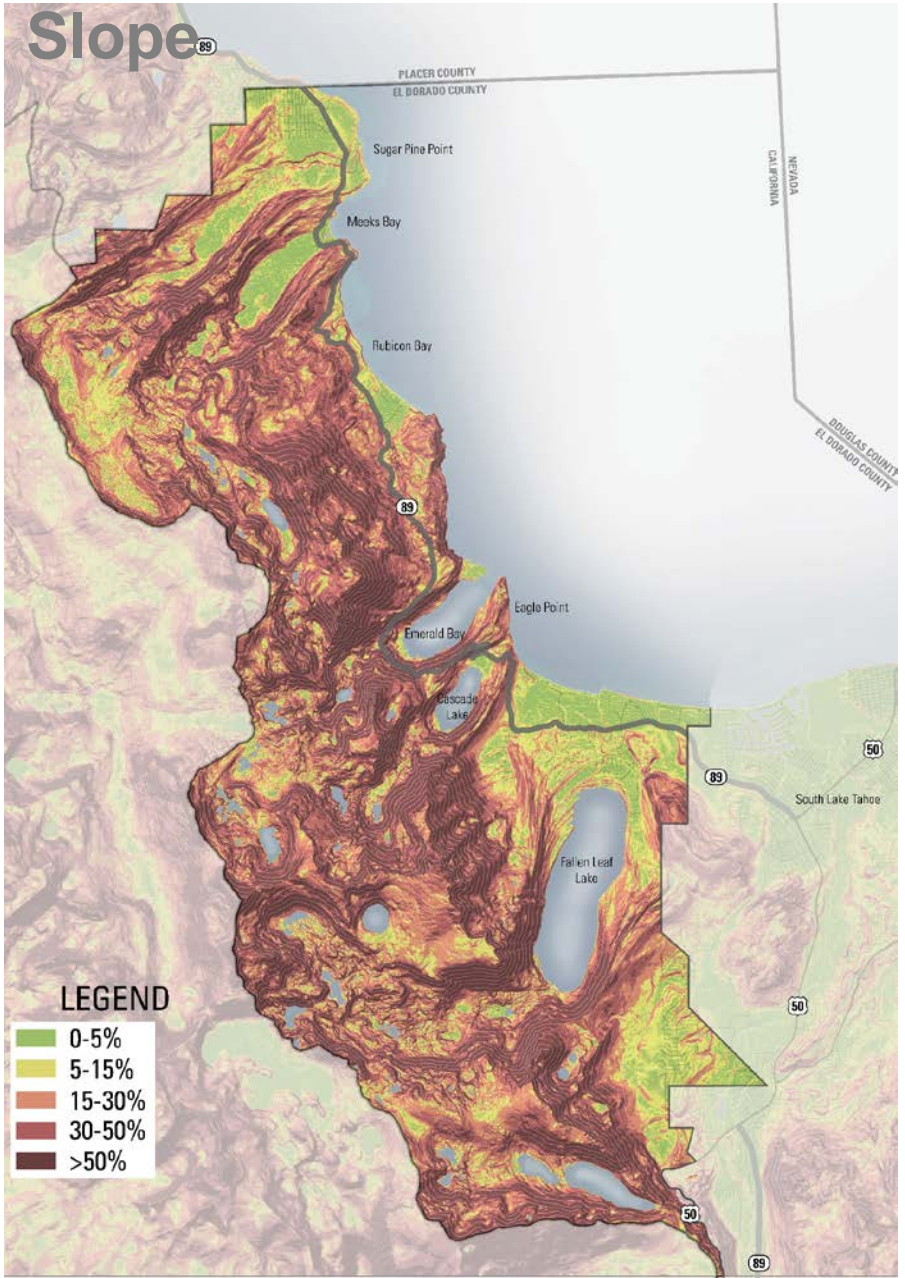
88%
conservation/
open space

2,784
residential
units

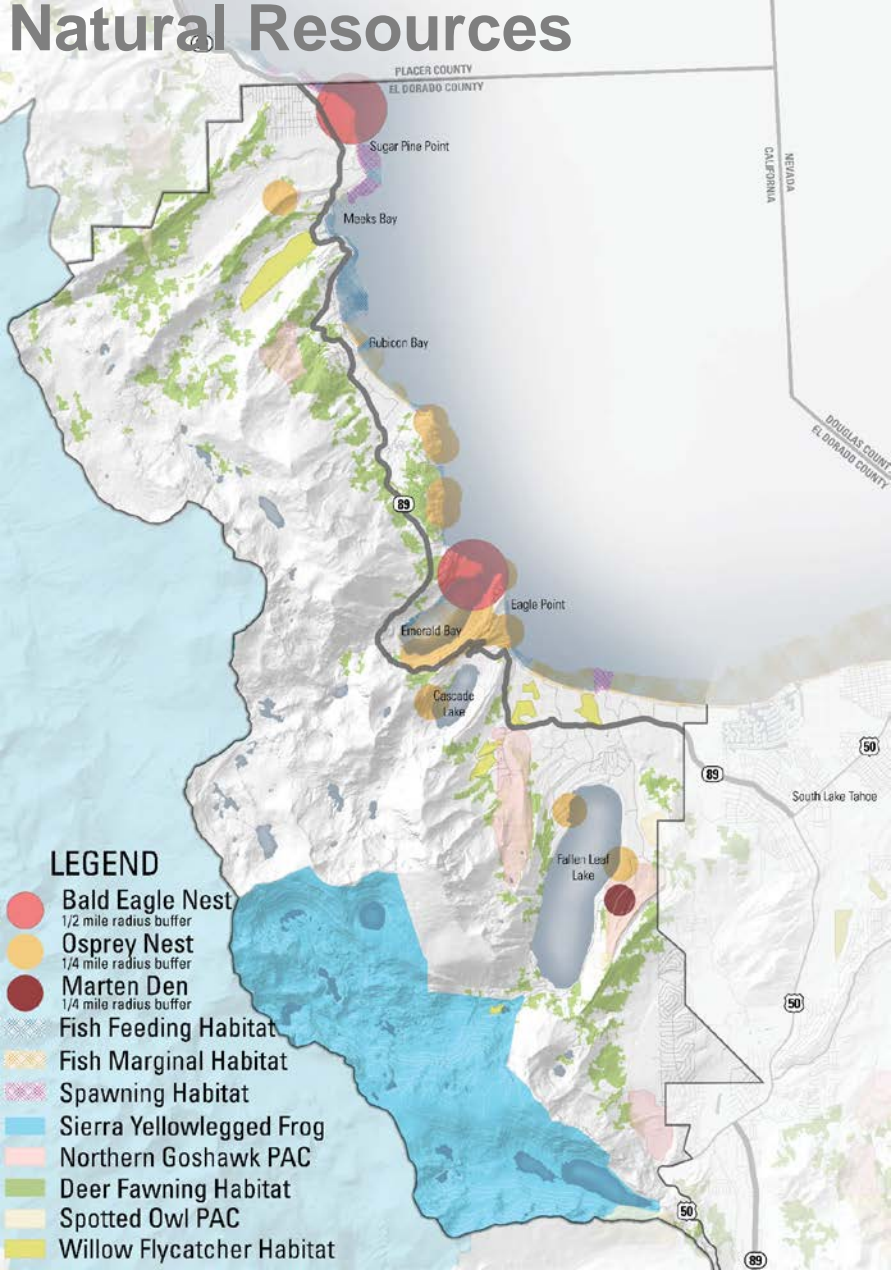
80%
seasonal
resident
units

1,015
residents

corridor existing conditions

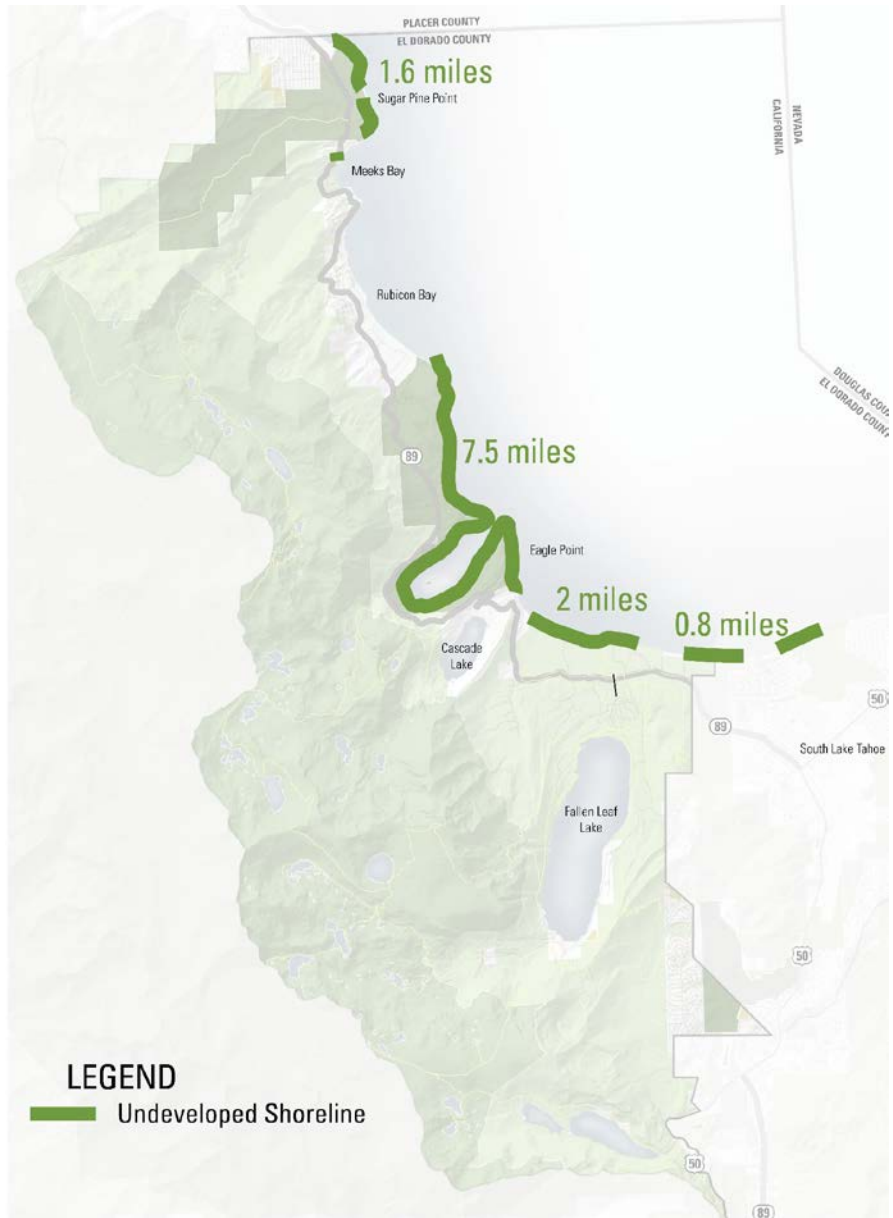
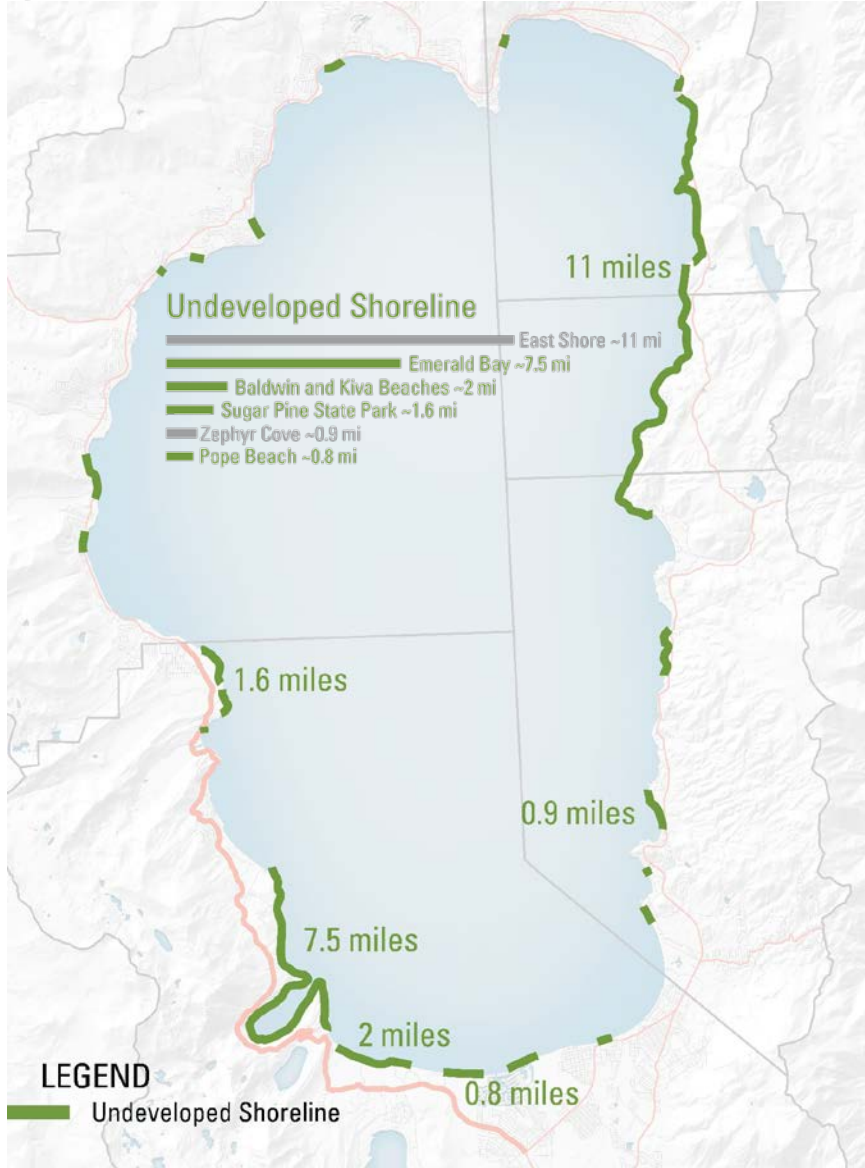


corridor existing conditions



corridor uses

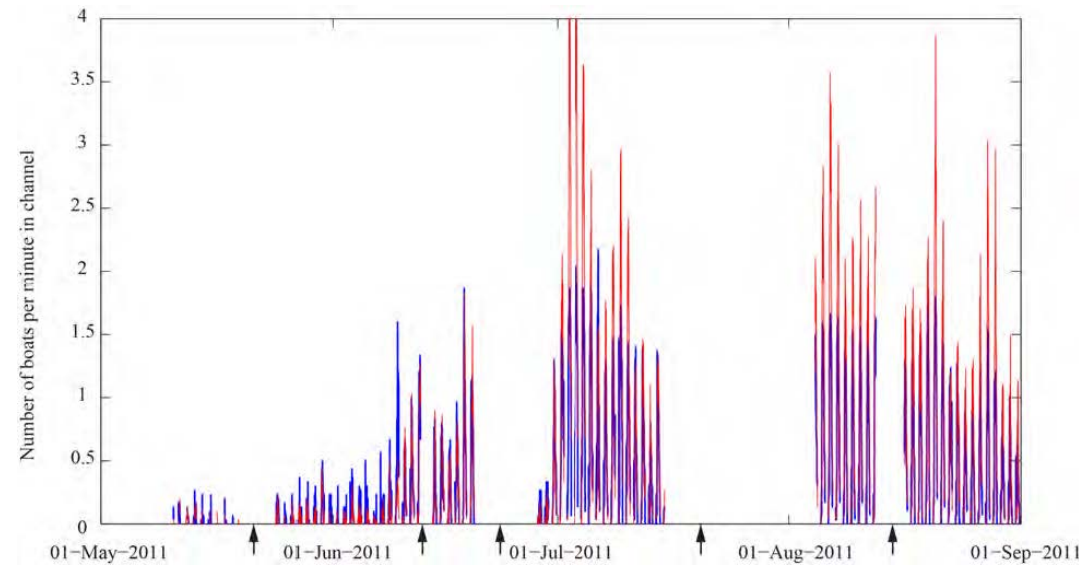
Shoreline Access



corridor uses

UC Davis Boat Study, 2011

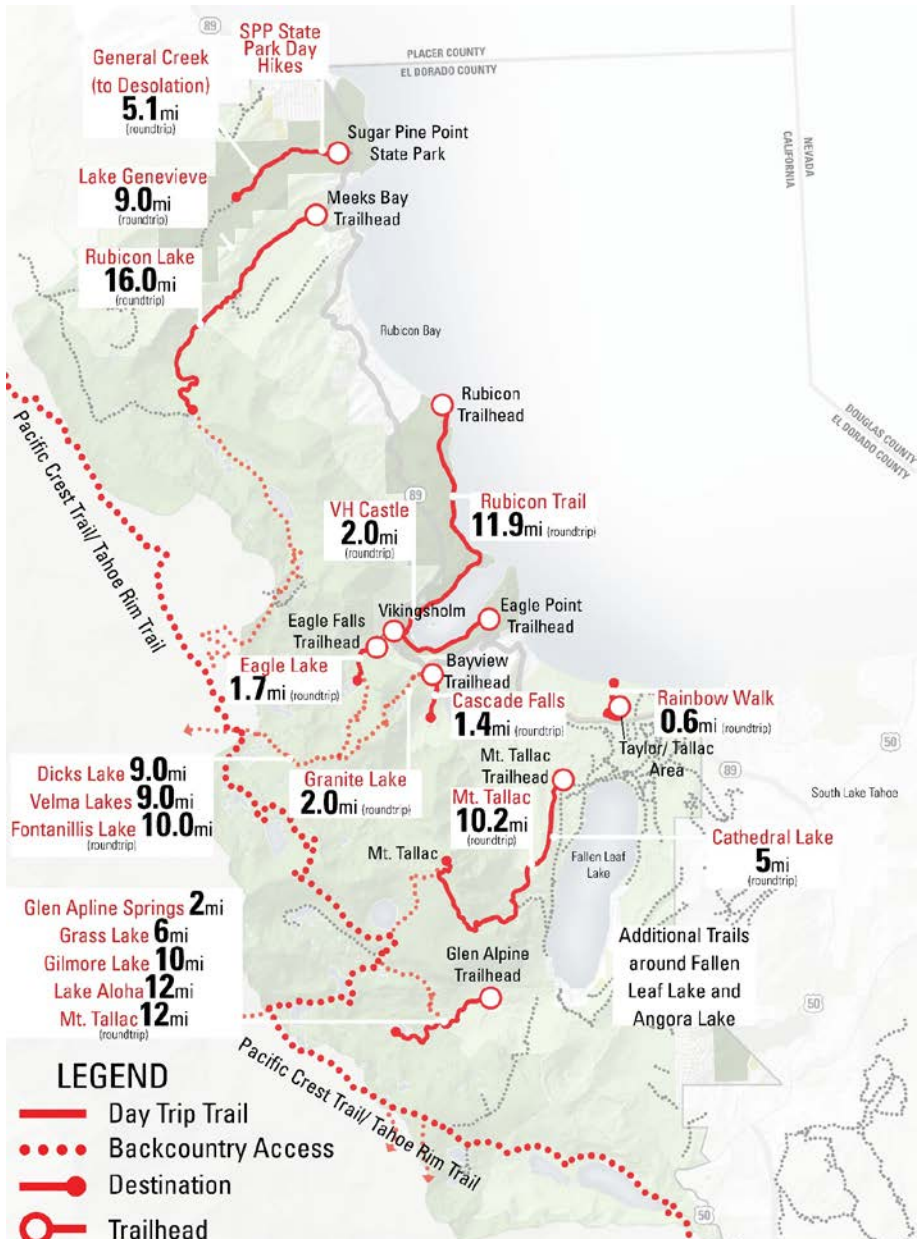
Boats entering Emerald Bay



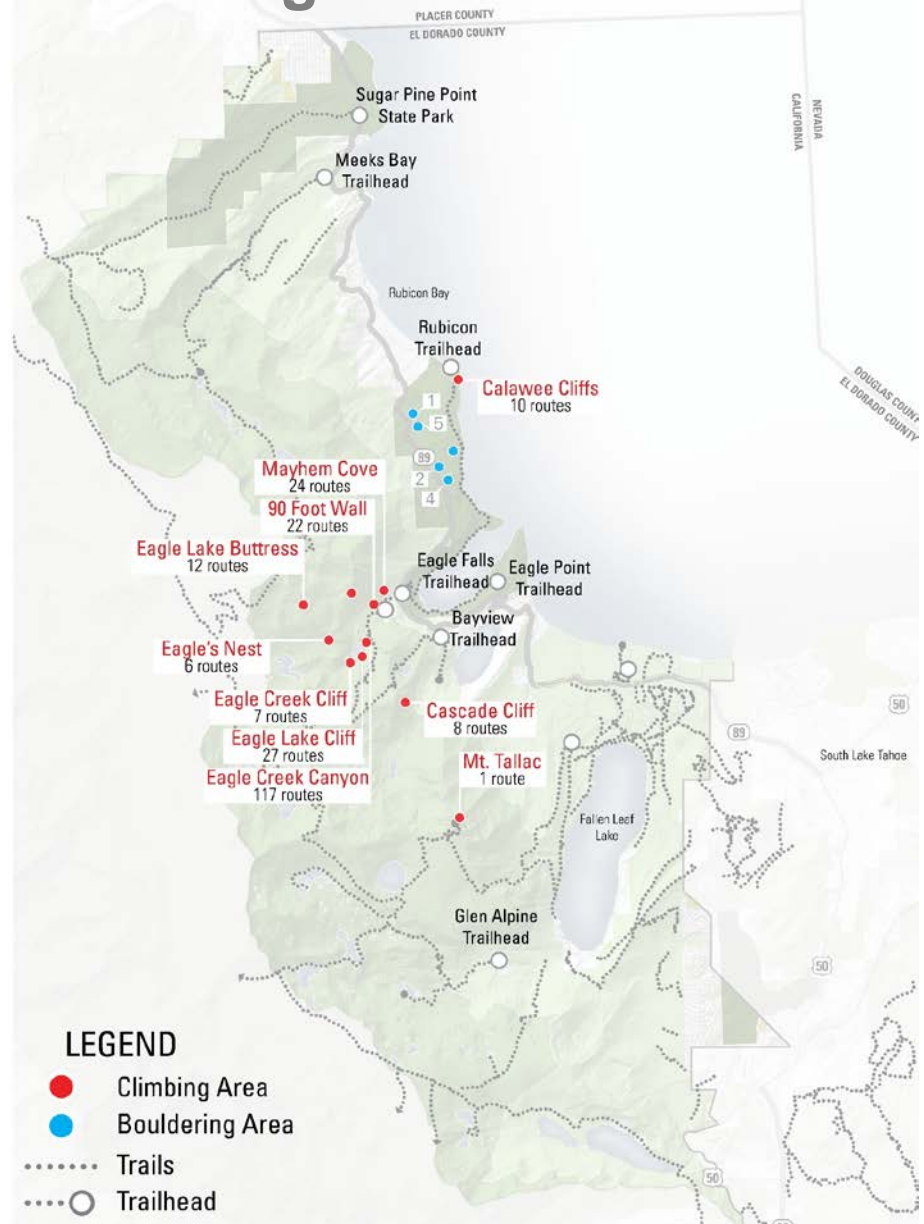
- **May 10 – June 7: 10** boat trips/day
- **June 7 – June 19: about 200** boat trips/day
- **4th of July week: 500** boat trips/day
- **July through early August: 300** boat trips/day
- **After Aug. 16: boat use declined**, most use on weekends

corridor uses

Trail Access



Climbing Access



corridor uses

Winter Access



corridor uses

Significant Events

- Emerald Bay Trail Run
- Lake Tahoe Triathlon
- America's Most Beautiful Ride
- Tour De Tahoe
- Lake Tahoe Marathon
- Tales and Trails Festival
- Valhalla Renaissance Faire
- Wa She Shu It' Deh at Valhalla
- Oktoberfest
- Fall Fish Fest
- Valhalla Arts, Music & Theatre Festival



corridor uses and ownership



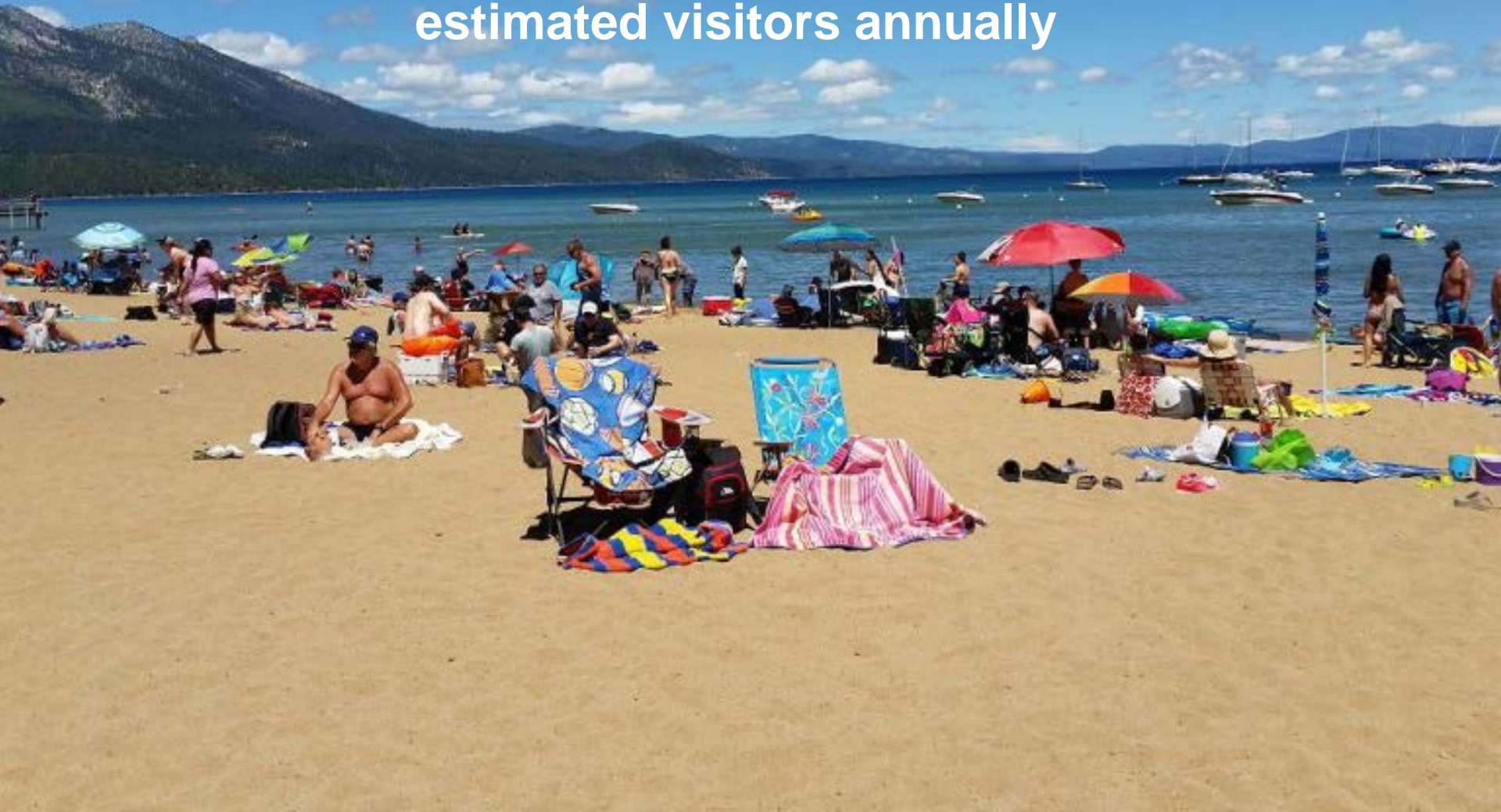
LEGEND

- Trailhead
- Campground
- Scenic Viewpoint
- Point of Interest
- Public Beach
- Trails
- Existing Class I Bike Path
- Proposed Class I Bike Path (in progress)
- Proposed Class I Bike Path
- California
- Designated Wilderness Area
- USFS LTBMU
- California Tahoe Conservancy

visitors

1,700,000

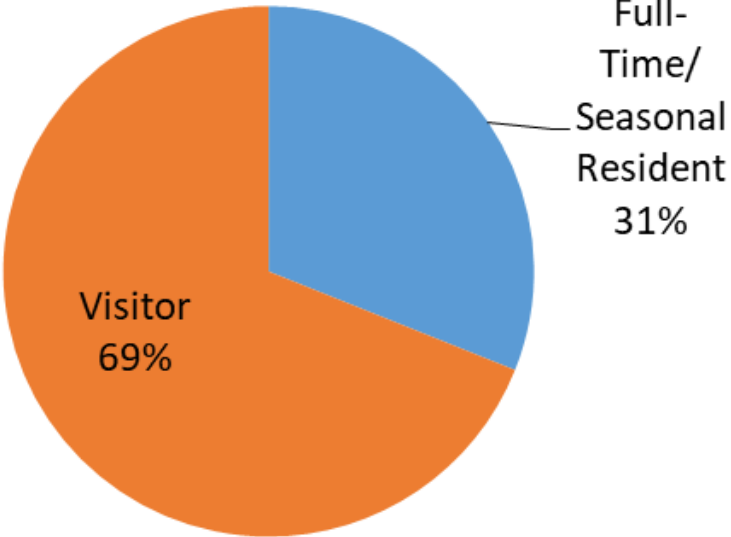
estimated visitors annually



local visitors & non-local visitors

Camp Richardson Area

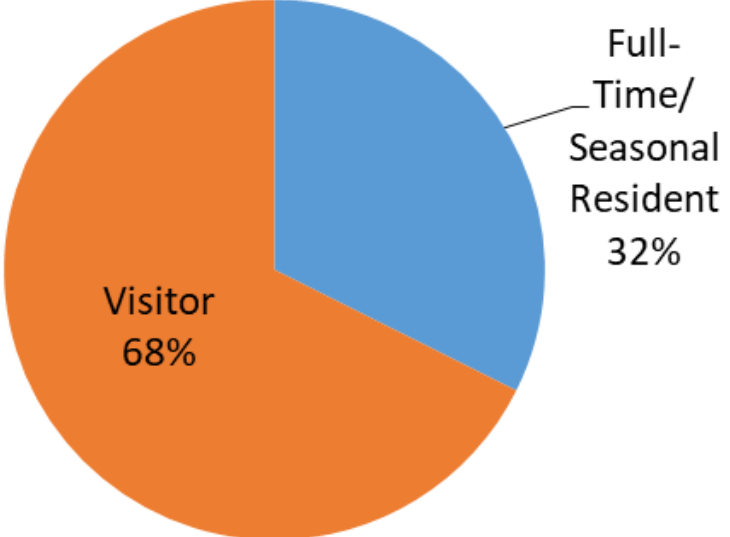
(n = 293)



Source: 2010 and 2014 TRPA Travel Mode Share Surveys, Baldwin Beach, Camp Richardson, Pope Beach, Glen Alpine Trailhead

Emerald Bay Area

(n = 312)

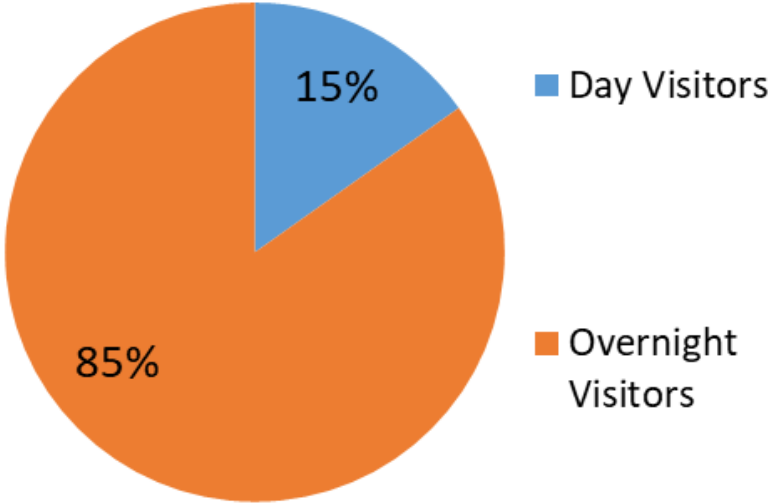


Source: 2010 and 2014 TRPA Travel Mode Share Surveys, Eagle Falls, Inspiration point, Meeks Bay

day visitors vs. overnight visitors

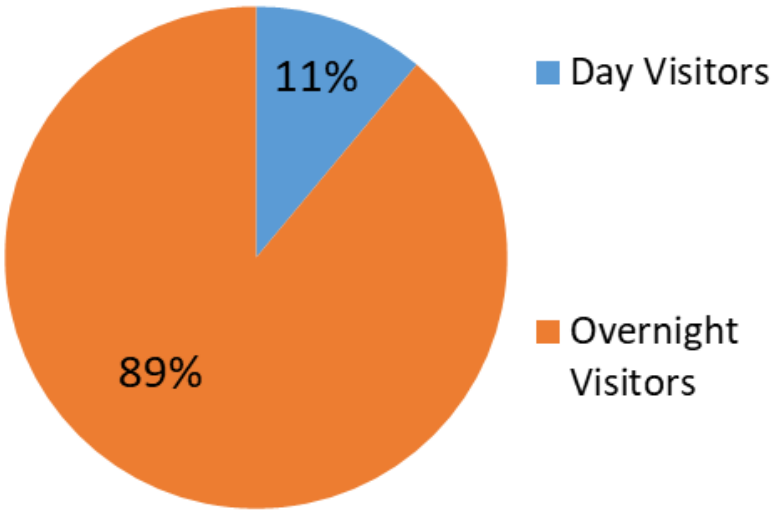
Camp Richardson Area

(n = 158)



Emerald Bay Area

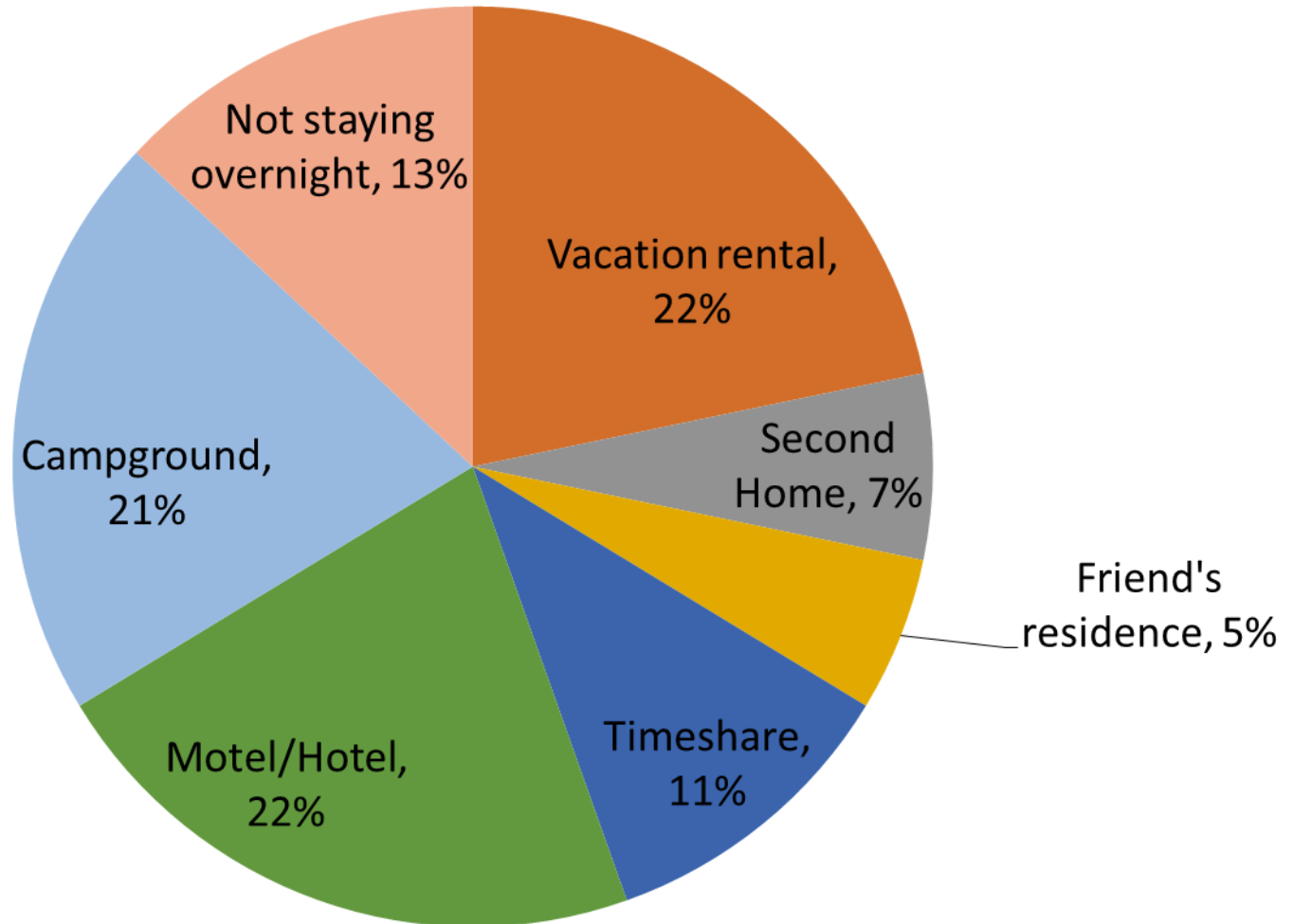
(n = 181)



Source: 2010 and 2014 TRPA Travel Mode Share Surveys, Baldwin Beach, Camp Richardson, Pope Beach, Glen Alpine Trailhead

Source: 2010 and 2014 TRPA Travel Mode Share Surveys, Eagle Falls, Inspiration Point, Meeks Bay Trailhead

Type of Overnight Lodging - 2014 Camp Richardson Area Visitors (n = 92)

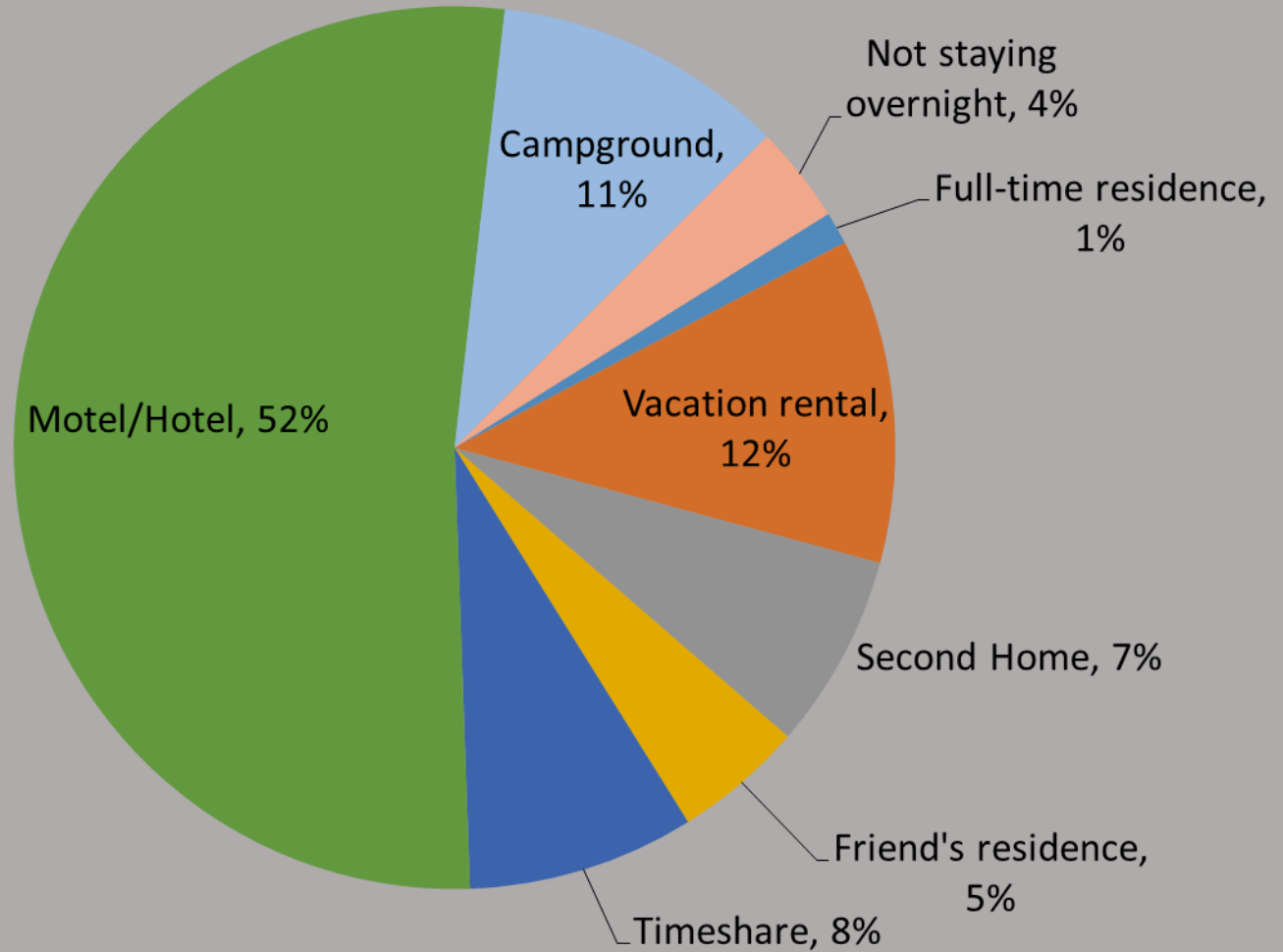


Source: 2014 TRPA Travel Mode Share Surveys, Baldwin Beach, Camp Richardson, Pope Beach, Glen Alpine Trailhead

Type of Overnight Lodging - 2014

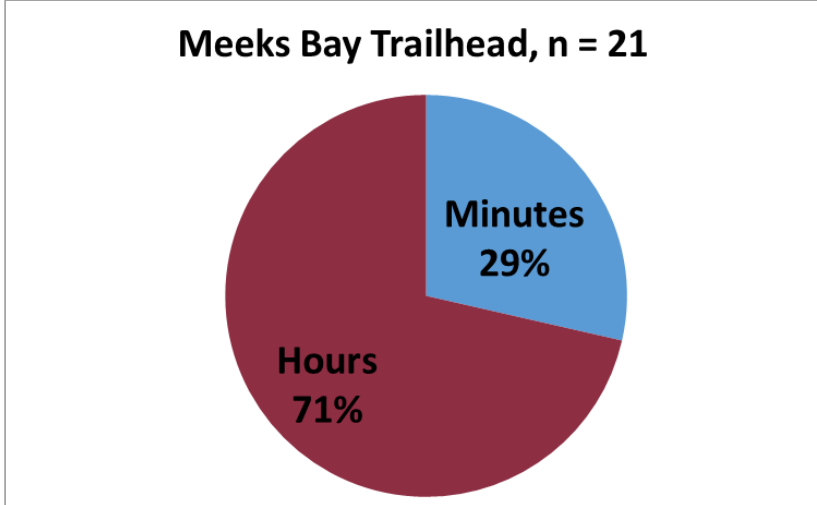
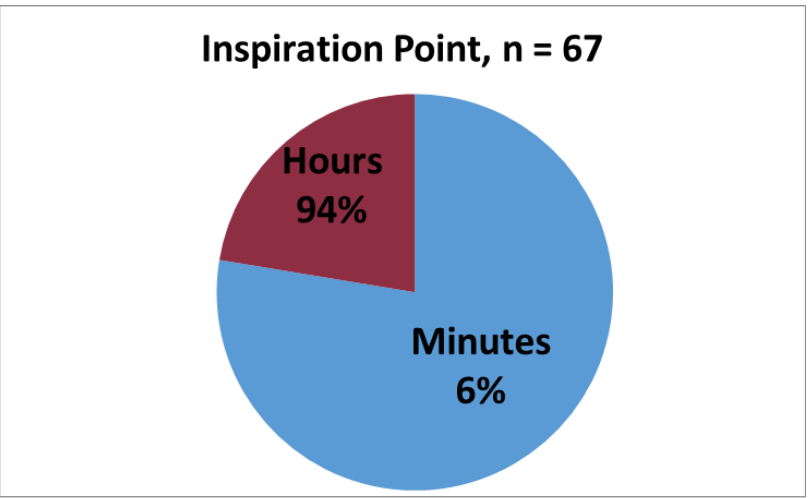
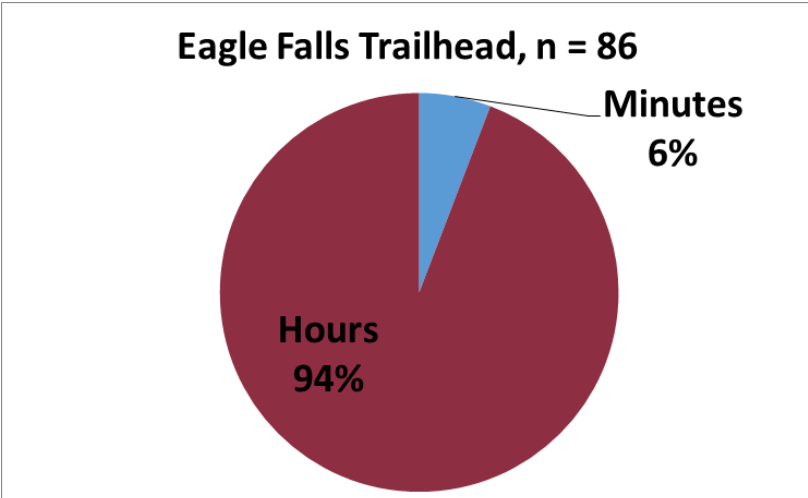
Emerald Bay Area Visitors

(n = 84)



Source: 2014 TRPA Travel Mode Share Surveys, Eagle Falls, Inspiration Point, Meeks Bay Trailhead

length of stay Emerald Bay area

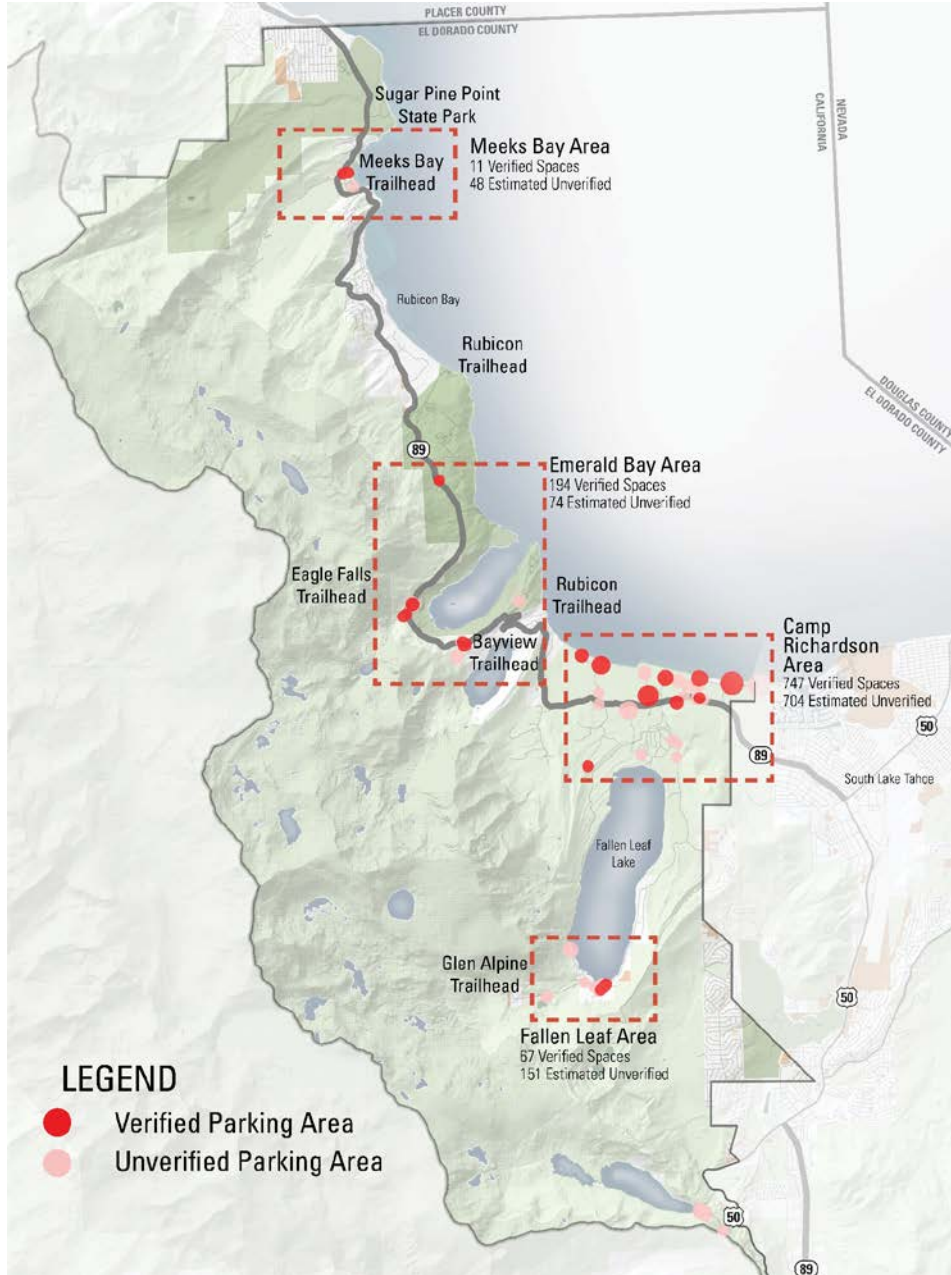


Source: TRPA Travel Mode Share Surveys, 2010. Residents and Visitors.

parking



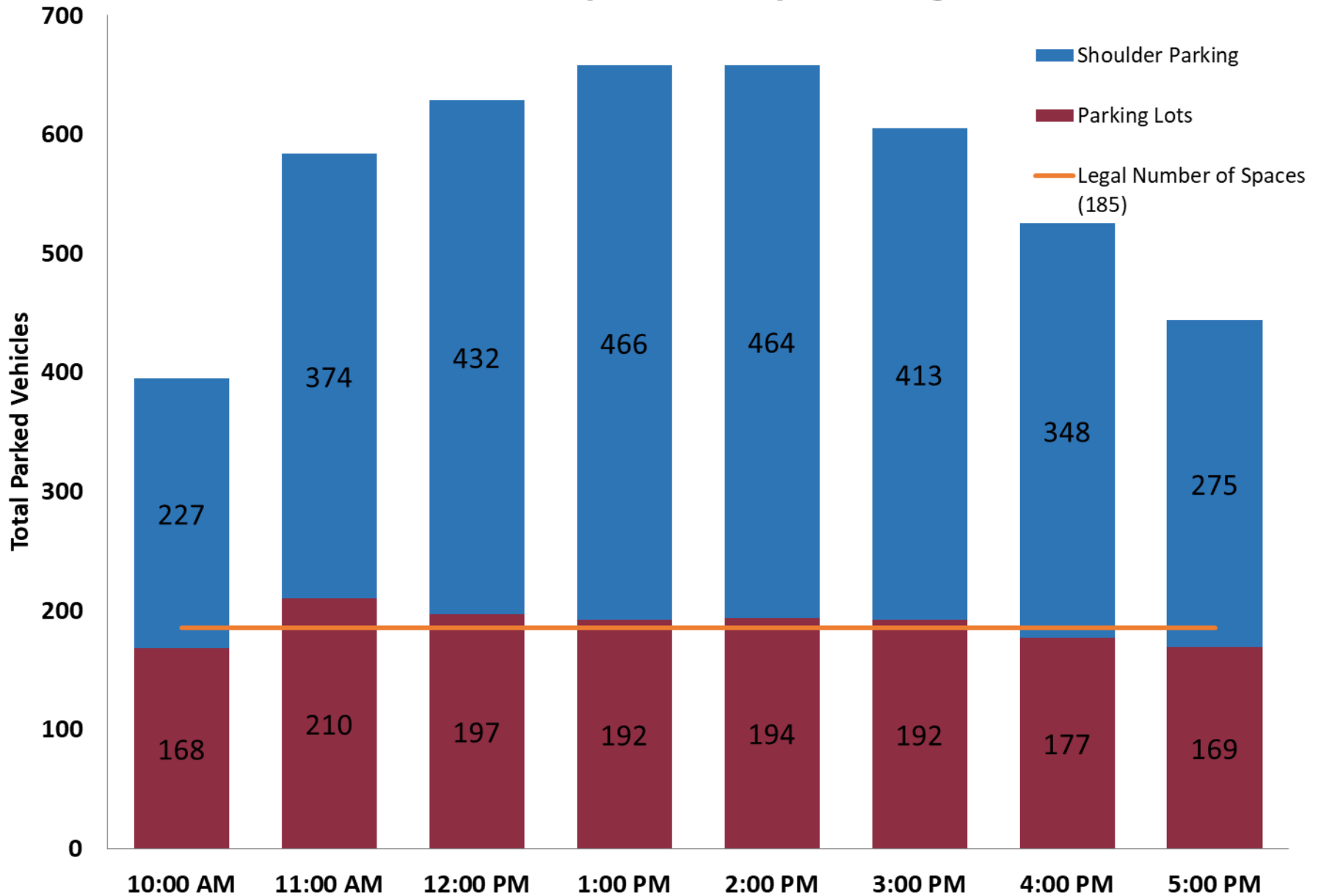
parking



813 vehicle entries annually for every **1** parking space

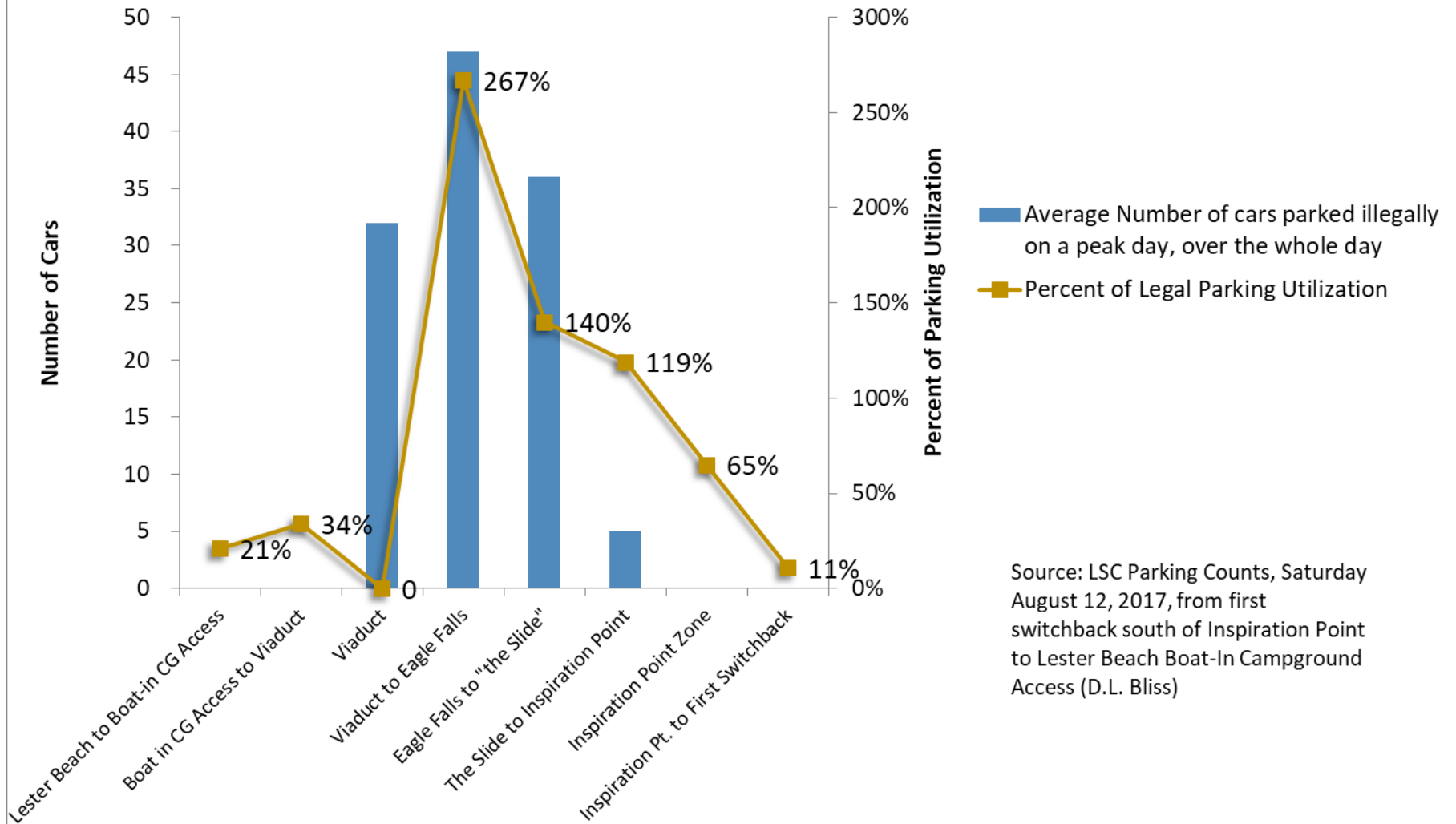
1,675 total off-highway parking spaces

Emerald Bay Peak Day Parking



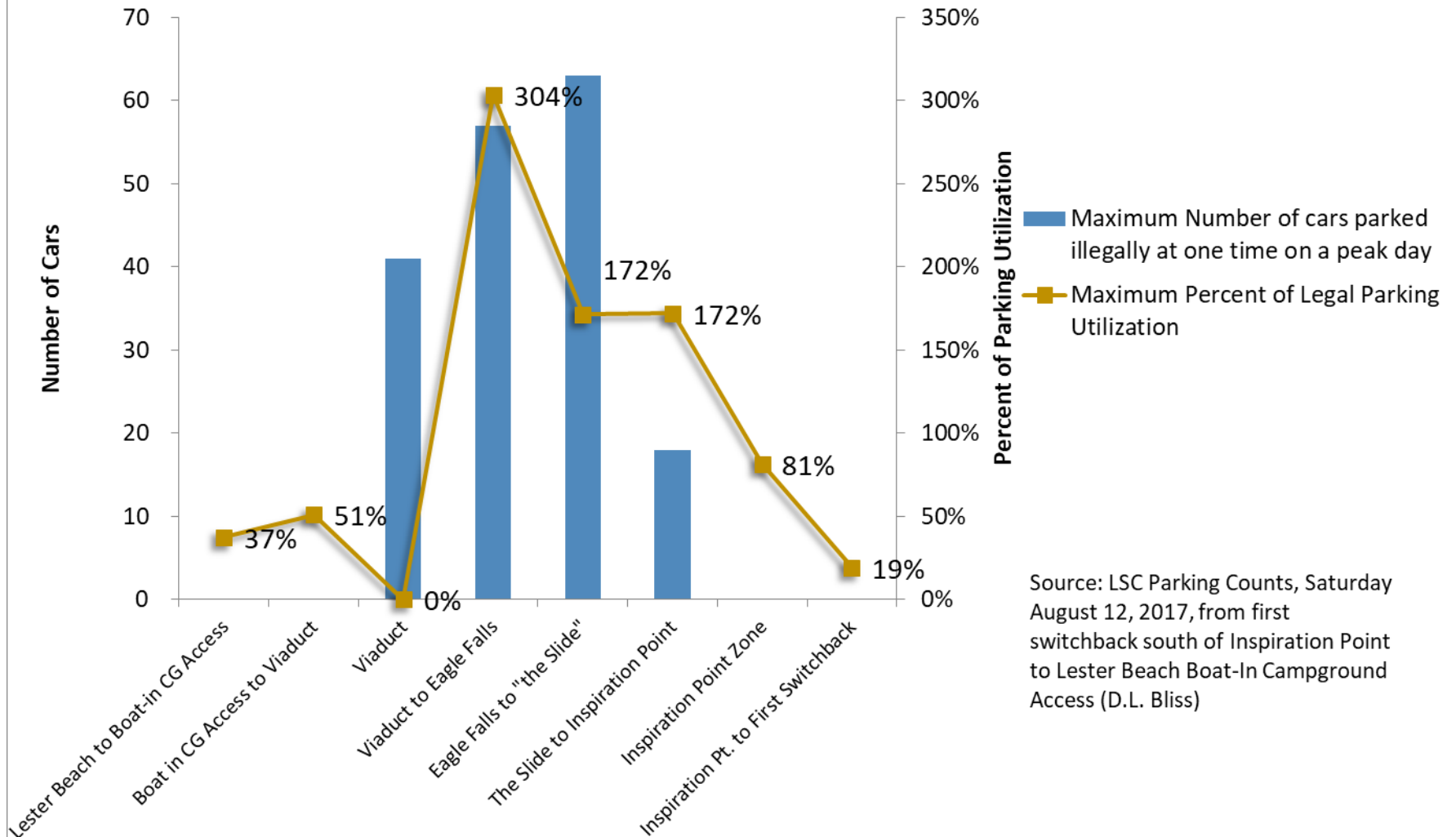
Source: LSC Counts, August 12, 2017, from D.L. Bliss to First Switchback South of Inspiration Pt

Average Number and Percent of Legal Parking Utilization on Shoulder on a Peak Day, Emerald Bay Area



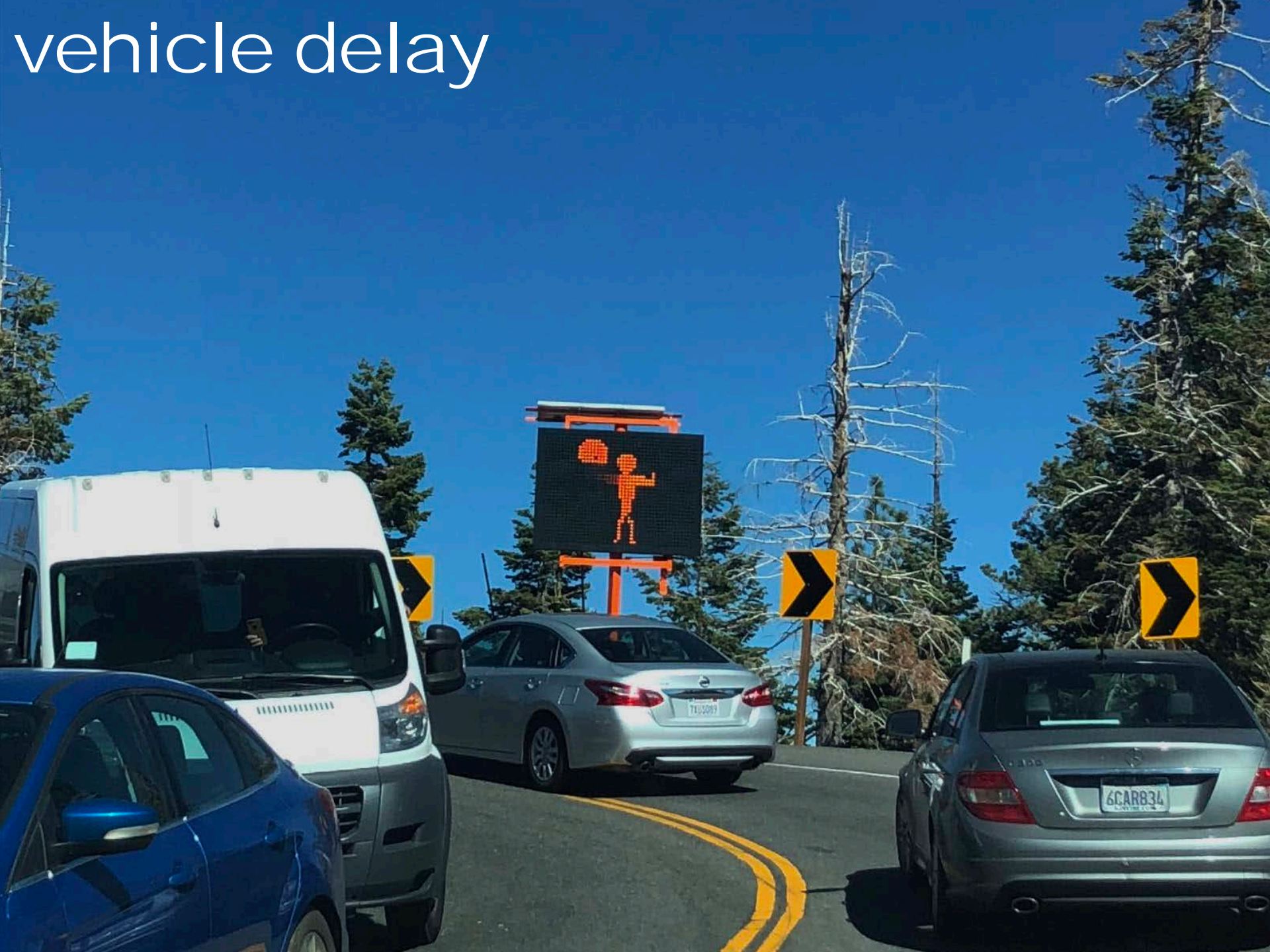
Source: LSC Parking Counts, Saturday August 12, 2017, from first switchback south of Inspiration Point to Lester Beach Boat-In Campground Access (D.L. Bliss)

Maximum Number and Percent of Legal Parking Utilization on Shoulder on a Peak Day, Emerald Bay Area

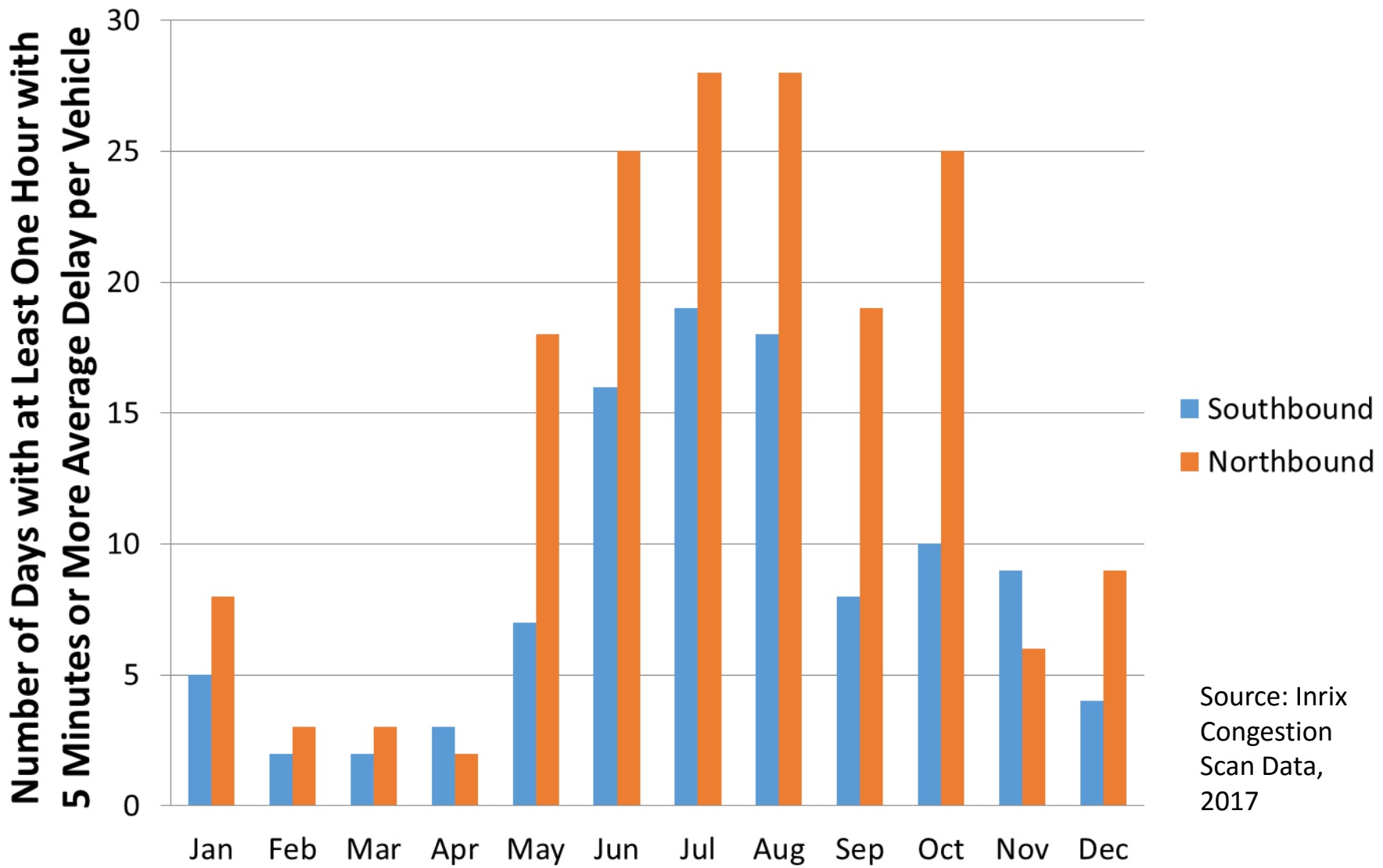


Source: LSC Parking Counts, Saturday August 12, 2017, from first switchback south of Inspiration Point to Lester Beach Boat-In Campground Access (D.L. Bliss)

vehicle delay



Number of Days with Delay by Month, State Route 89 Meeks Bay to South Tahoe "Y"



Source: Inrix
Congestion
Scan Data,
2017

Maximum Minutes of Delay per Vehicle in Month of Peak Delays

Meeks Bay to US 50 -- August 2017

Day of Week 8:00 9:00 10:00 11:00 12:00 13:00 14:00 15:00 16:00 17:00 18:00

Maximum by Day of Week - Southbound

Sun	2	2	2	2	12	10	10	7	7	5	6
Mon	2	2	7	8	4	4	4	8	17	5	4
Tue	2	8	9	4	4	4	4	6	9	4	5
Wed	3	5	5	4	7	4	6	10	11	7	6
Thu	2	2	2	4	4	3	7	11	6	8	4
Fri	2	2	2	2	2	2	2	2	2	3	3
Sat	1	-1	1	2	2	4	7	5	10	8	10
Max Week	3	8	9	8	12	10	10	11	17	8	10

Maximum by Day of Week - Northbound

Sun	14	9	4	6	9	6	5	4	3	3	5
Mon	3	5	5	5	5	5	6	4	3	3	4
Tue	2	5	6	6	7	10	6	3	3	2	2
Wed	3	7	7	7	7	6	6	4	3	5	4
Thu	3	6	6	8	9	6	8	4	3	3	3
Fri	2	7	3	5	6	3	4	4	3	3	15
Sat	0	2	3	11	11	11	10	6	3	2	2
Max Week	14	9	7	11	11	11	10	6	3	5	15

Source: Inrix Congestion Scan Data, 2017

Note: Inrix data represents average delay by hour. The maximums shown are the maximum average delay by day of the week throughout the month of August.

SR 89 Corridor Emergency Response Times

Forest Service, 2012-2017

Region	Average	Median	Min	Max	Incident Count
--------	---------	--------	-----	-----	----------------

Summer - Jun to Aug

Response Time in Hours: Minutes

Meeks Bay	0:06	0:06	0:06	0:06	9
Emerald Bay	0:16	0:15	0:11	0:24	163
Overall	0:16	0:14	0:10	0:23	175

Increase Over Minimum

Meeks Bay	0:00	0:00	--	0:00
Emerald Bay	0:05	0:03	--	0:12
Overall	0:05	0:03	--	0:12

Non-Summer - Sept to May

Response Time in Hours: Minutes

Meeks Bay	0:05	0:05	0:01	0:09	4
Emerald Bay	0:10	0:10	0:07	0:14	219
Overall	0:10	0:10	0:07	0:14	225

Increase Over Minimum

Meeks Bay	0:03	0:03	--	0:07
Emerald Bay	0:03	0:02	--	0:07
Overall	0:03	0:03	--	0:07

Notes:

Includes response times from Forest Service Only

Data categorized as response types FIRE, DEBRI/CAMPFIRE and FIRE, OTHER/MISC were omitted as response times reflected non-urgent events.

Source: LSC Transportation Consultants, Inc. from data provided by CalFire

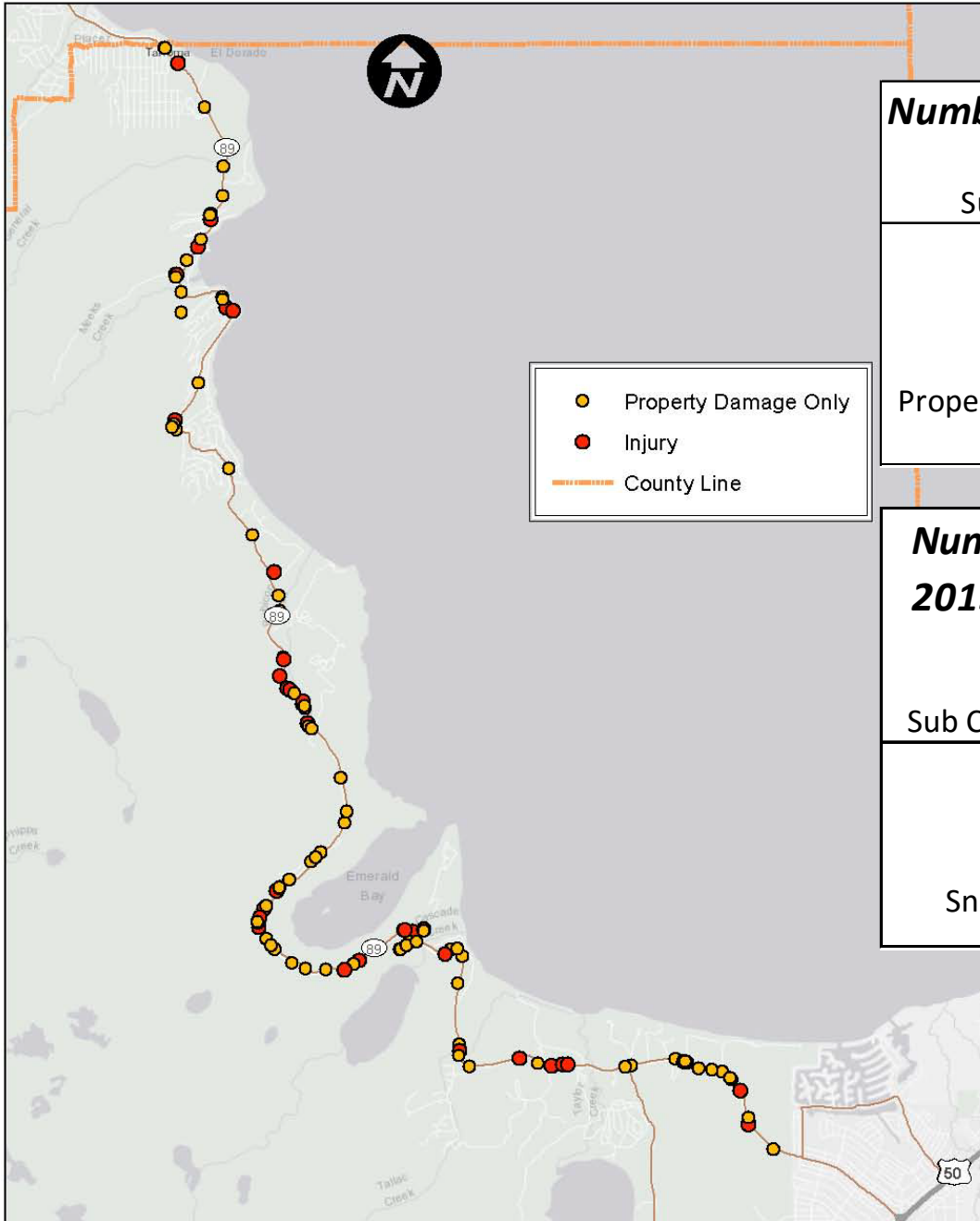
crashes





0 0.5 1 2 Miles

State Route 89 Recreation Corridor Crash Severity - 2013-2017



Number of Crashes by Severity - 2013-2017

Sub Corridor:	Camp Richardson	Emerald Bay	Meeks Bay	Corridor Subtotal
Total	35	72	35	142
Injury	14	27	16	57
Fatality	0	0	0	0
Property Damage Only	21	45	19	85

Number of Crashes by Road Condition - 2013 - 2017





Sub Corridor:	Camp Richardson	Emerald Bay	Meeks Bay	Corridor Subtotal
Total	35	72	35	142
Dry	32	58	20	110
Wet	2	2	5	9
Snowy/Icy	1	12	10	23

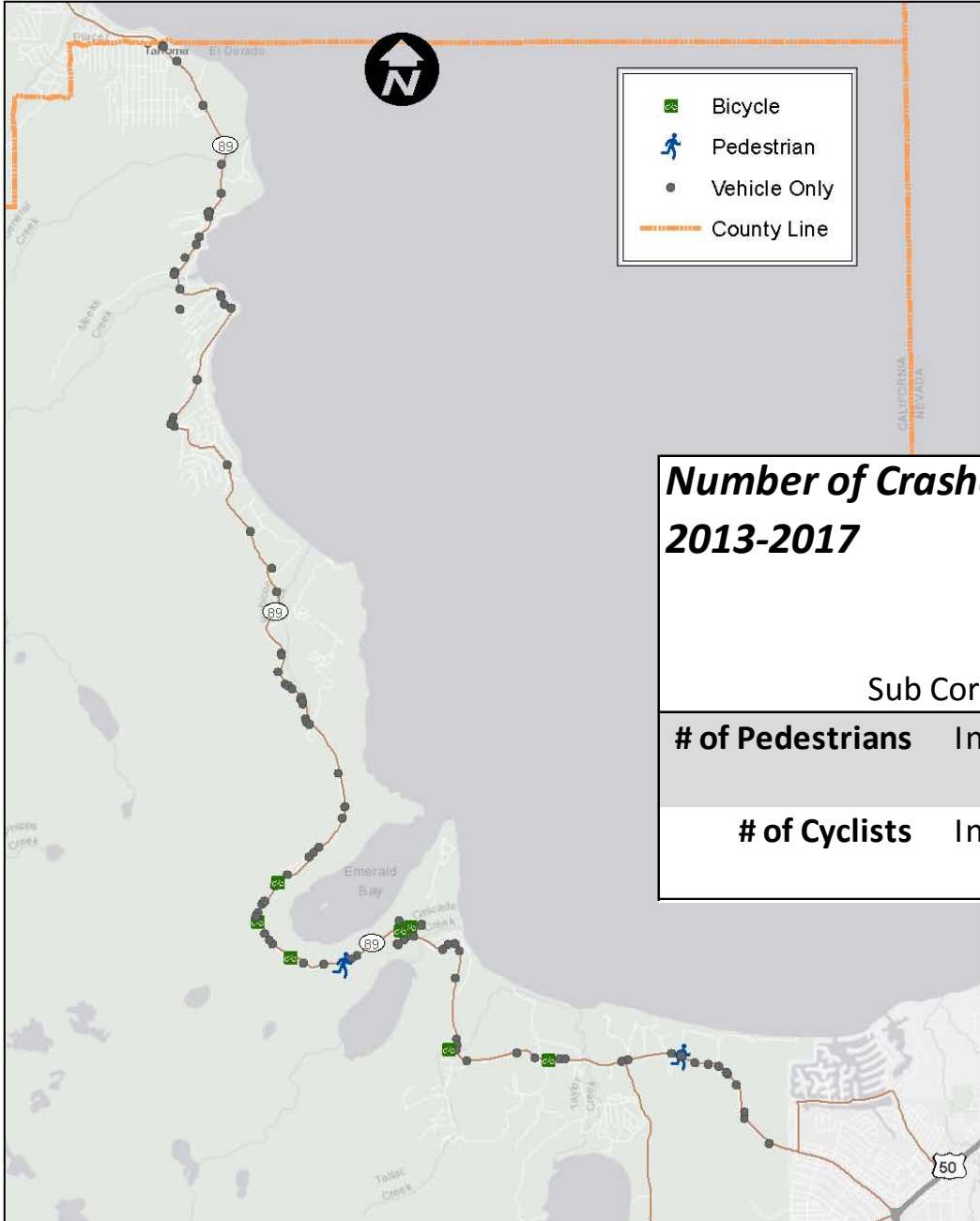


0 0.75 1.5 3 Miles

State Route 89 Recreation Corridor, Bicycle Pedestrian, and Vehicle Only Crashes 2013-2017



-  Bicycle
-  Pedestrian
-  Vehicle Only
-  County Line



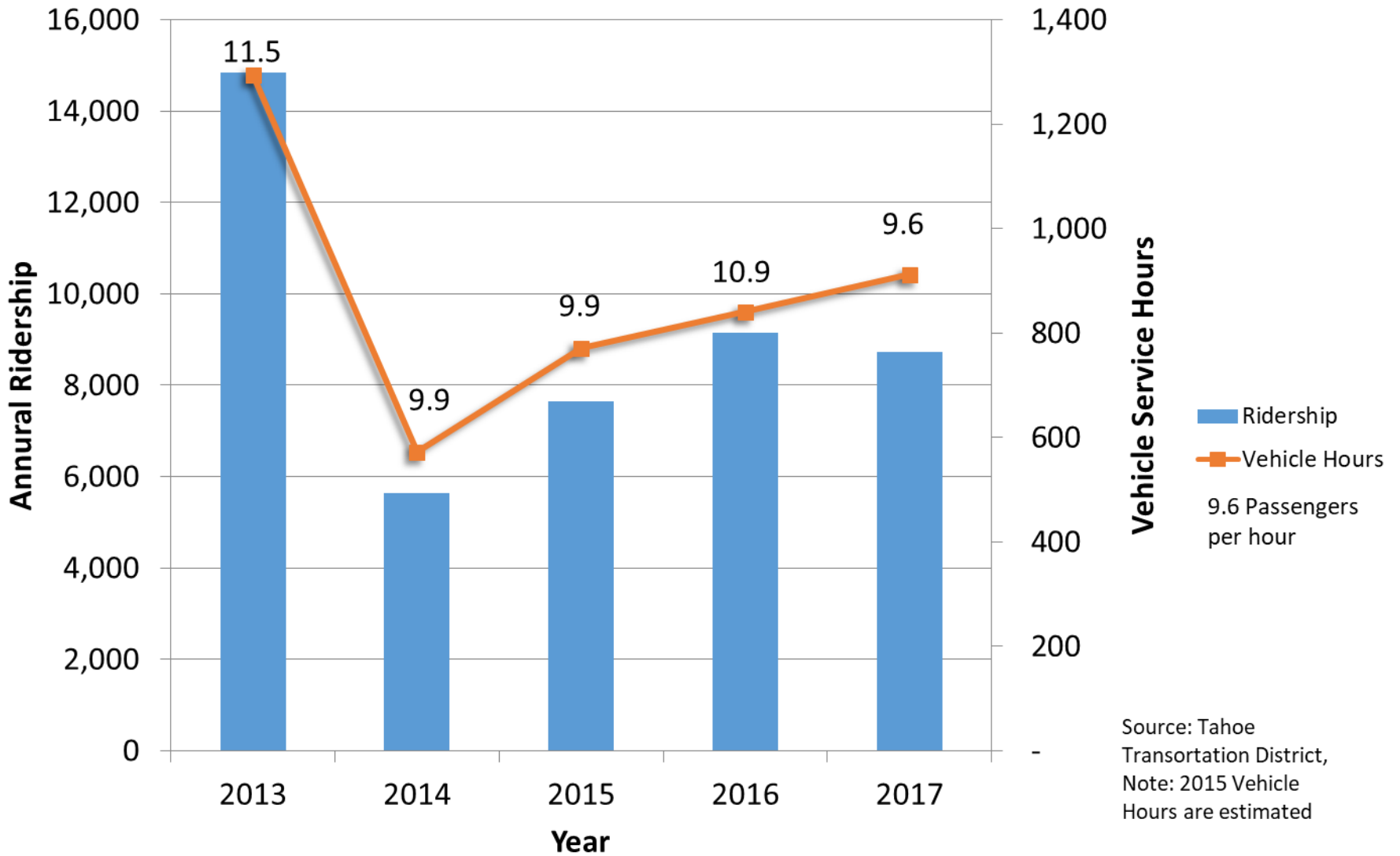
Number of Crashes Involving a Bicyclist or Pedestrian - 2013-2017

		Camp Sub Corridor: Richardson	Emerald Bay	Meeks Bay	Corridor Subtotal
# of Pedestrians	Injured	1	1	0	2
	Killed	0	0	0	0
# of Cyclists	Injured	0	2	5	7
	Killed	0	0	0	0

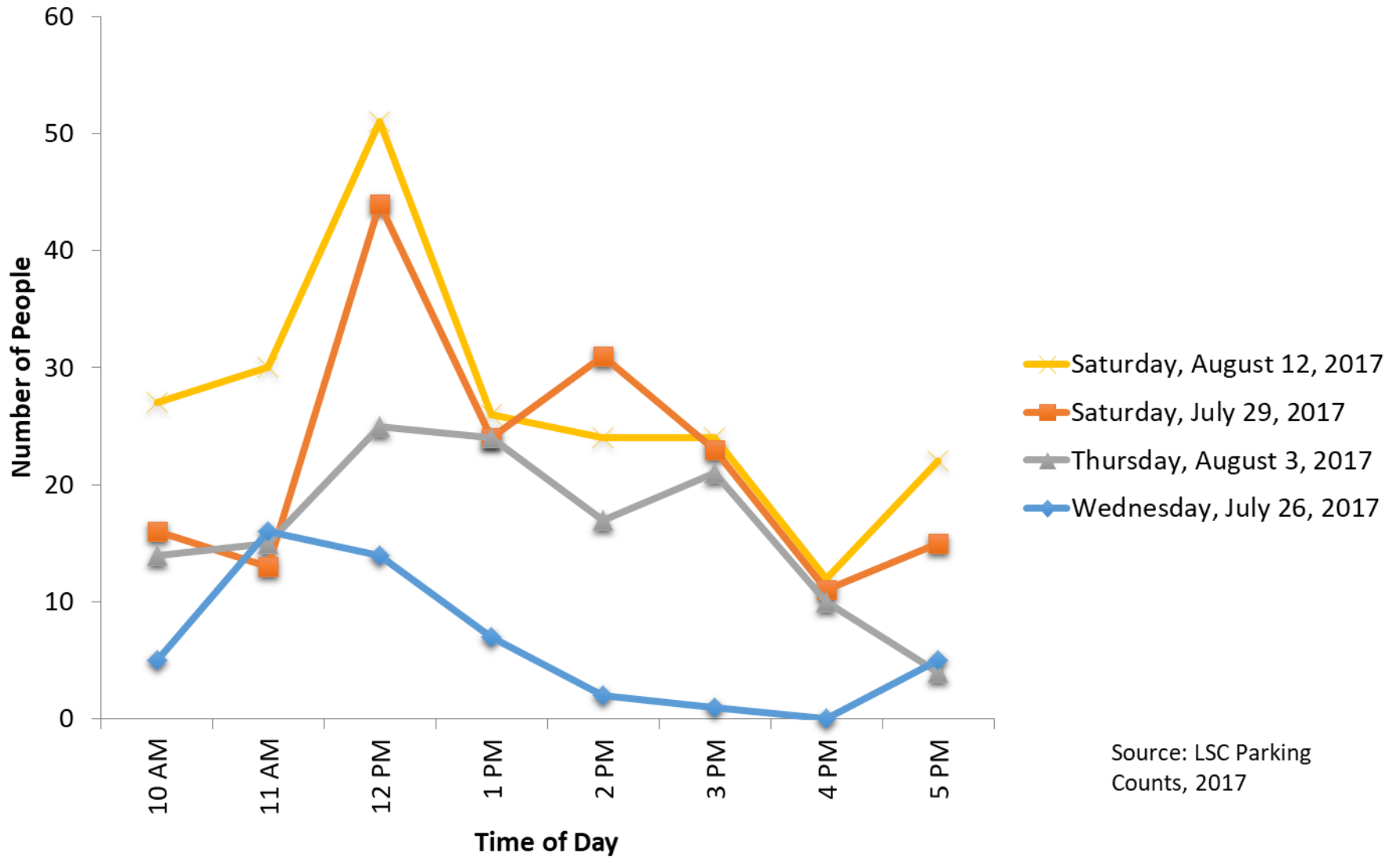
transit-use, biking, walking



TTD Trolley Ridership and Riders per Service Hour 2013 - 2017

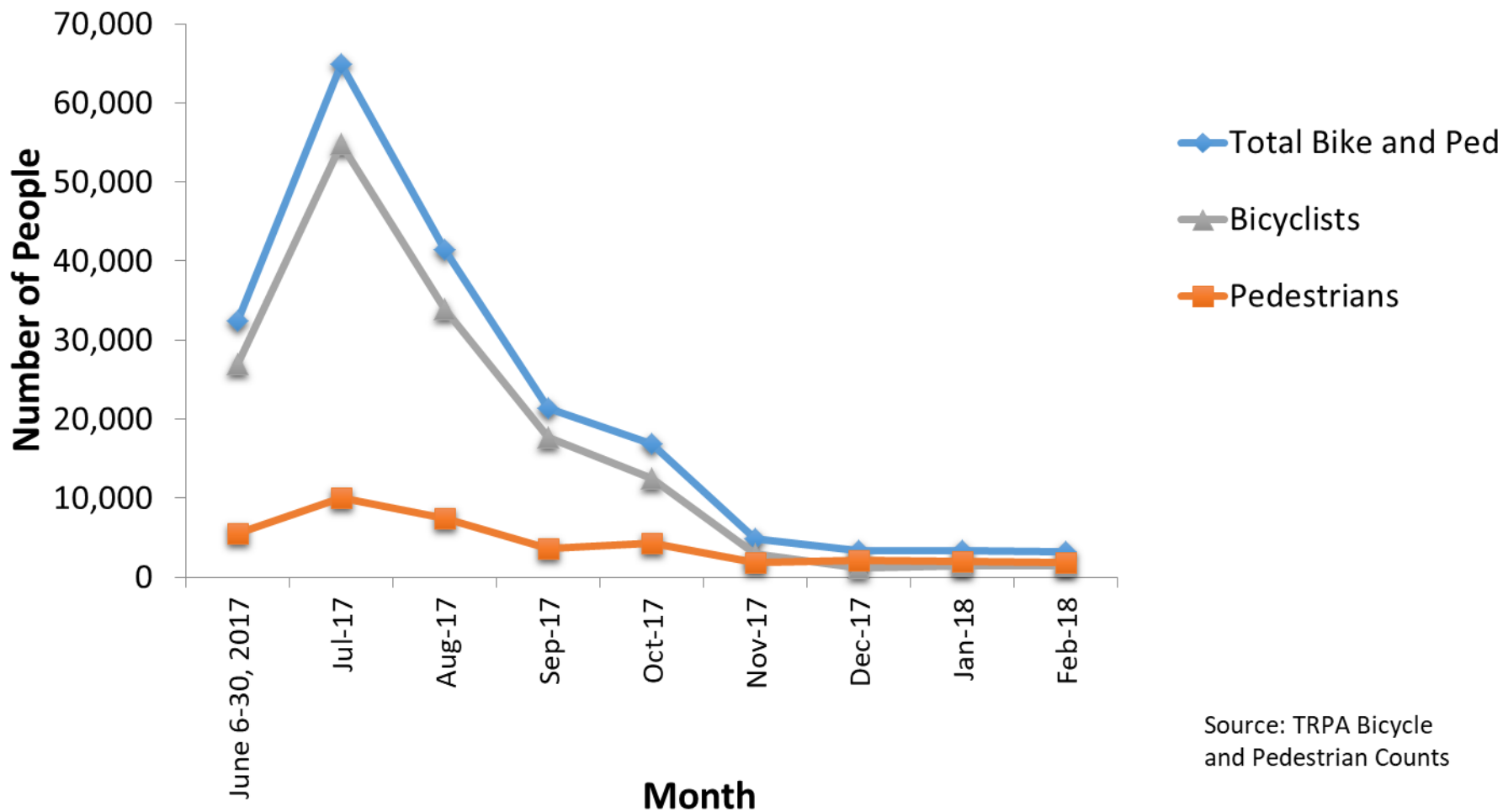


Number of People Observed Walking on Viaduct North of Emerald Bay at One Time



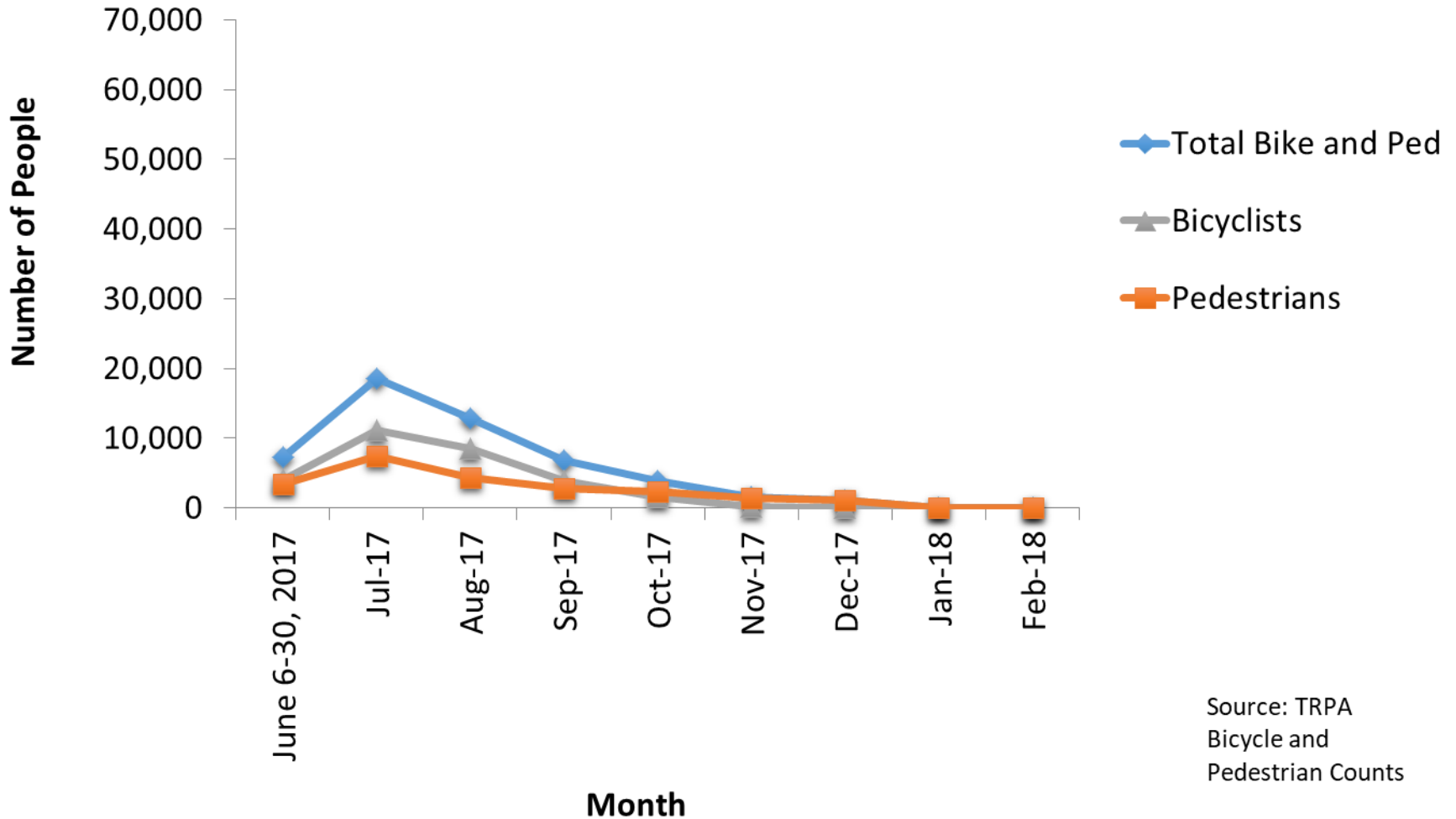
Source: LSC Parking
Counts, 2017

Bicyclists and Pedestrians by Month on Camp Richardson Shared-Use Path, 2017



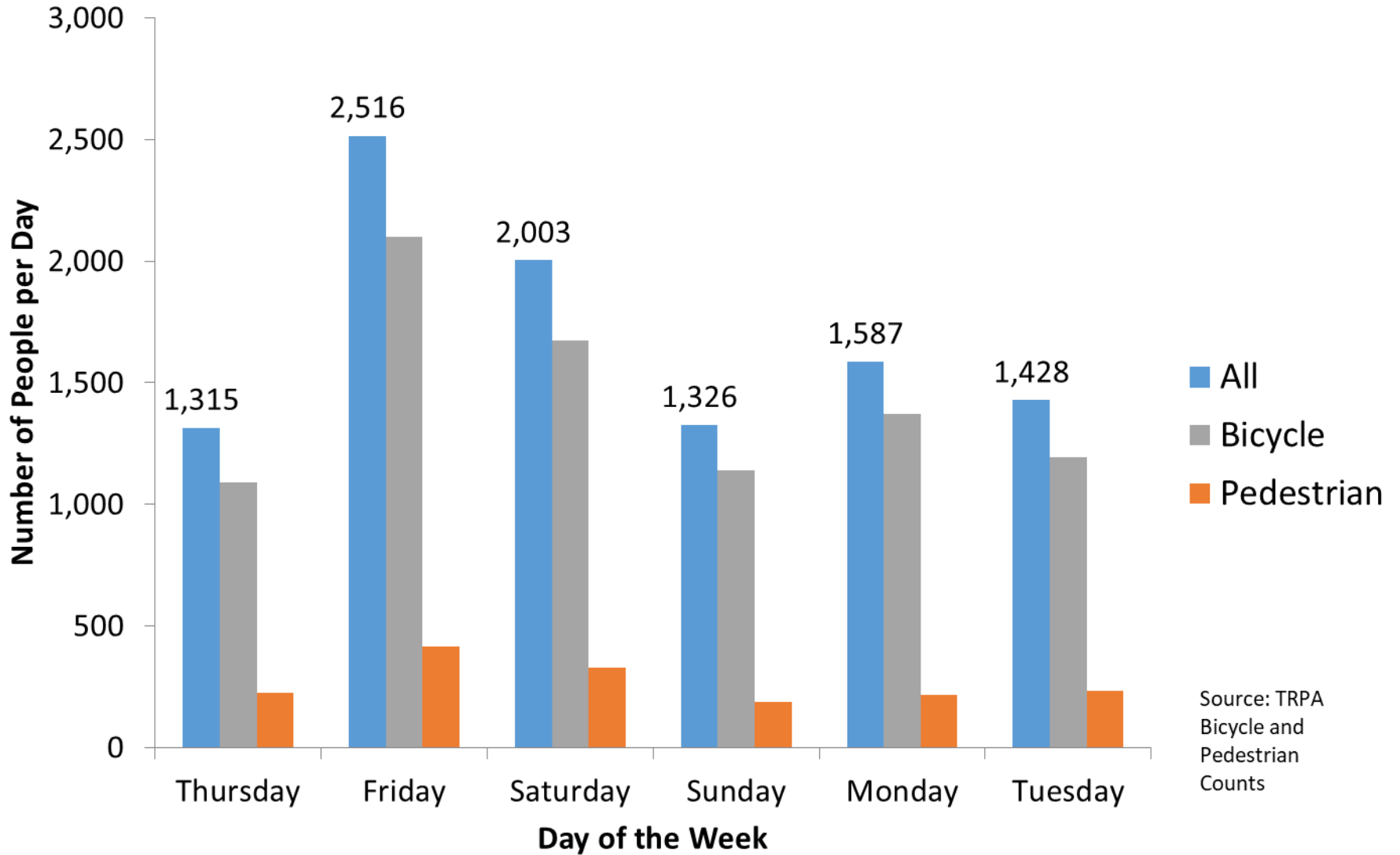
Source: TRPA Bicycle and Pedestrian Counts

Bicyclists and Pedestrians by Month on Homewood Shared-Use Path, 2017



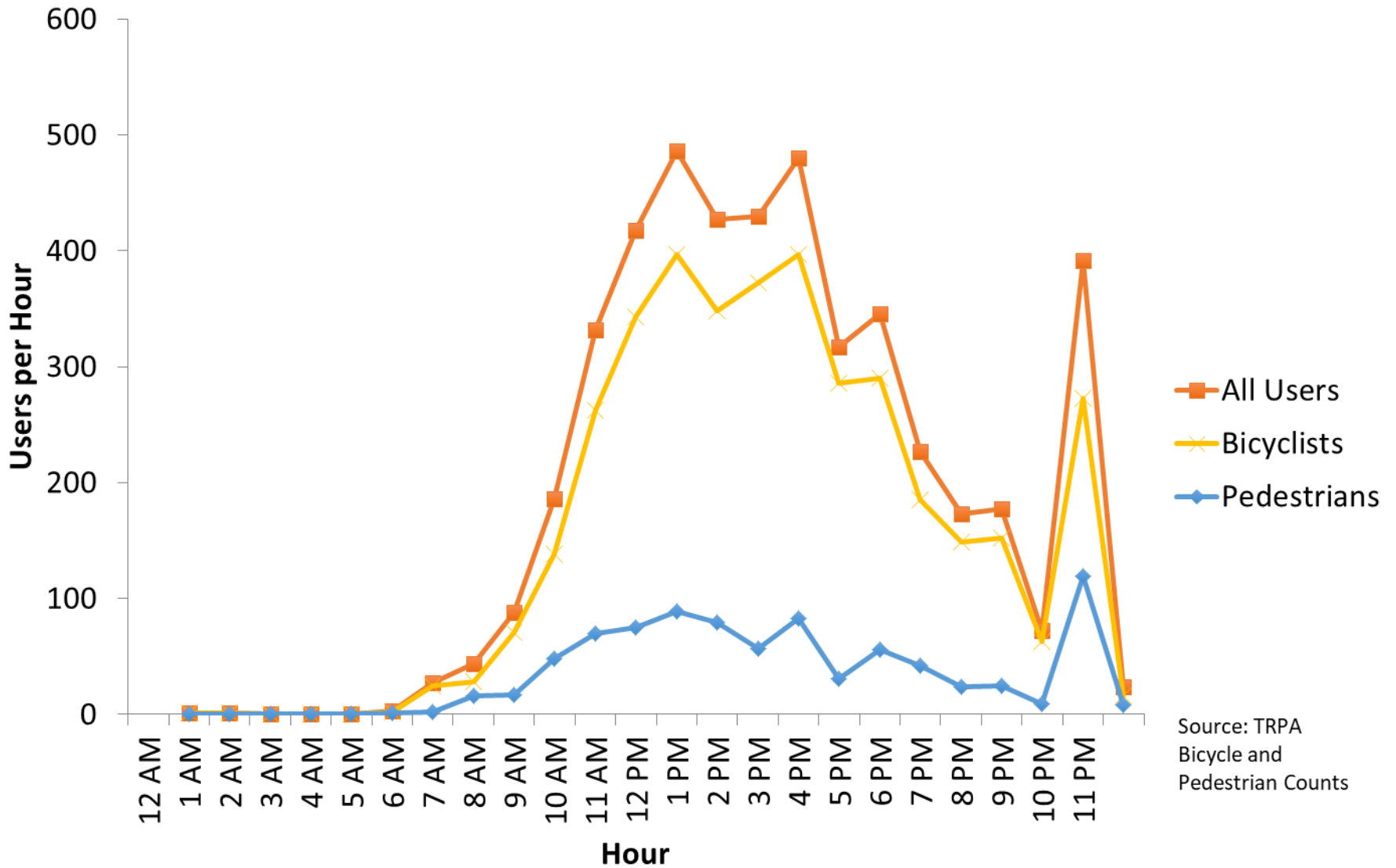
Source: TRPA
Bicycle and
Pedestrian Counts

Camp Richardson Shared-Use Path Typical Week: June 16 - 22, 2017



Users per Hour on Camp Richardson Shared-Use Path

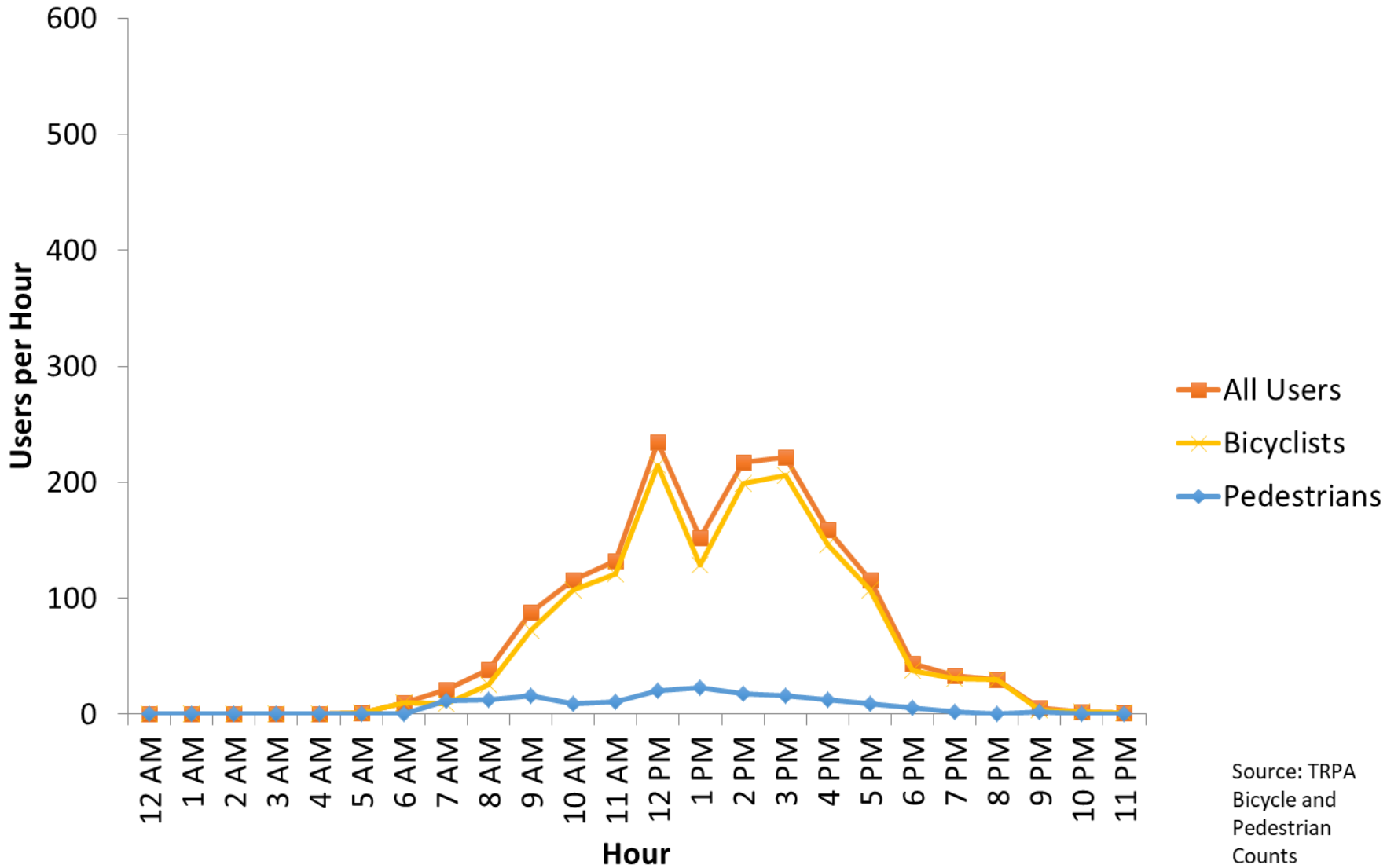
Peak Day: Tuesday, July 4, 2017



Source: TRPA
Bicycle and
Pedestrian Counts

Users per Hour on Camp Richardson Shared-Use Path

Typical Summer Day: Thursday July 27, 2017



Source: TRPA
Bicycle and
Pedestrian
Counts

data gaps

- More refined vehicle delay info
- Emergency response data
- Legal & illegal roadside parking for rest of the Corridor
 - Number of parking tickets and/or vehicles towed
- Visitor feedback from those roadside parking
- Daily and hourly arrival distribution
- Duration of stay (only have rough numbers)
- Visitor use
- Number of visitors per group
- Trip patterns
- Trailhead use: # of day use hikers vs. overnight hikers
- Other visitation modes (tour bus arrival numbers)
- Camp Richardson: Jameson Road pedestrian movement study

executive-level issues

- Technology
 - Federal & State Legislation: To allow for a “Linking Tahoe” fee that covers operations and maintenance of mobility solutions
 - Federal & State Legislation: To allow user fees collected by different agencies to stay in the Basin and not return to agency General Funds
 - Funding to address: Lack of wireless connectivity
- Partnerships
 - Signing Project Charter Agreements to provide commitment
 - Funding & Prioritization: to update California State Park’s Master Plans
 - Funding for corridor planning

executive-level issues

- Restrictions from land use or land purchasing restrictions
 - Limits ability to manage properties as a single unit
 - Santini-Burton or other land purchase acts can impede land management decisions for entire parcel
 - Funding & prioritization needed for ROW/easement work
- Jurisdictional consistency for visitor experience
 - E-Bikes rules and regulations
 - Enforcement of illegal shoulder parking
 - Signage and wayfinding
 - Funding for consistent winter operations
 - Singular permit “clearinghouse”



the essential corridor experience

(what is the vision for recreation use of corridor lands? what are the principles or values that guide our decisions to achieve that vision?)

project charter

- Agencies to Sign

- Caltrans
- CDPR
- CSLC
- CHP
- EDC
- FHWA
- TRPA
- TTD
- USFS-LTBMU
- Washoe Tribe

Commitment

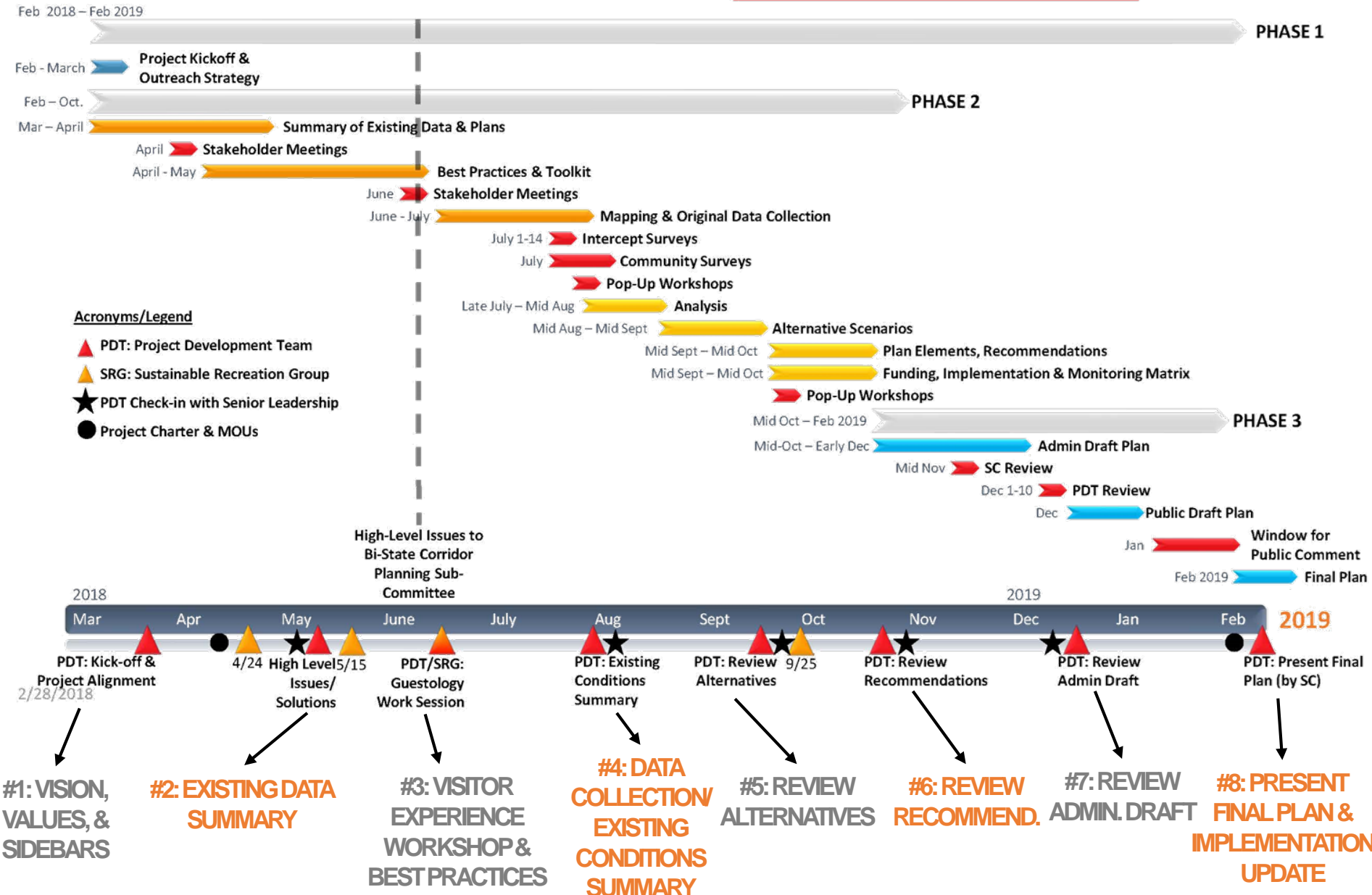
To jointly address shared issues, the TTD and its 12 partners have created a remarkable implementation mechanism: the SR 28 Corridor Management Plan. We thank the public for thoughtful comments and for supporting our commitment to protect the lake, improve safety, enhance recreation with transportation choices and benefit local/regional economies.

We, the undersigned, look forward to continued collaboration with the community as well as with each other:

 <p>Tahoe Transportation District</p>  <p>Carl Hasty, District Manager</p>	 <p>Tahoe Regional Planning Agency</p>  <p>Joanne Marchetta, Executive Director</p>
 <p>Federal Highway Administration</p>  <p>Sue Klekar, Division Administrator</p>	 <p>Tim Carlson, Presidential Appointee</p>
 <p>Nevada Department of Transportation</p>  <p>Rudy Malfabon, P.E., Director</p>	 <p>U.S. Forest Service</p>  <p>Nancy J. Gibson, Forest Supervisor Lake Tahoe Basin Management Unit</p>
 <p>Nevada Highway Patrol</p>  <p>Sergeant Randy Jackson Incline Village/Lake Tahoe</p>	 <p>Nevada Division of State Parks</p>  <p>Dave Morrow, Administrator</p>
 <p>Carson City Regional Transportation Commission</p>  <p>John McKenna, Chair</p>	 <p>State of Nevada, Division of State Lands</p>  <p>James R. Lawrence, Administrator and State Land Registrar</p>
 <p>County of Washoe</p>  <p>John Berkich, Interim County Manager</p>	 <p>County of Douglas</p>  <p>Steve Mokrohisky, County Manager</p>
 <p>Washoe Tribe of Nevada and California</p>  <p>Darrel Cruz, Washoe Cultural Resource Department-Director, Tribal Historic Preservation Officer</p>	 <p>Incline Village General Improvement District</p>  <p>William B. Horn, General Manager</p>

schedule & outreach strategy

SR 89 RECREATION CORRIDOR MANAGEMENT PLAN SCHEDULE WITH RED PUBLIC ENGAGEMENT WINDOWS



next PDT meeting: Guestology Workshop

Thursday, June 14 and Friday, June 15

- PDT participation could be split into 2 shorter sessions or 1 longer session
- Agenda
 - Guestology presentation
 - National Park Service approach to evaluate visitor experience
 - Best practices toolkit
 - Transportation
 - Recreation
 - Discussion of specific visitor experience issues and potential solutions for the SR 89 Corridor