

### Legend

- New 625 Line
- Existing 625 Line to Be Removed
- 625/629 Double-Circuit
- 650 Line to be Rebuilt
- 132/650 Double-Circuit to be Rebuilt
- 650 Line to be Removed
- Northstar Tap to Be Rebuilt as Fold
- Substation/Switching Station - Decommissioned
- Substation/Switching Station - Upgraded
- Substation/Switching Station - No Changes
- Staging Area
- Non-Project Component
- Waterways

### Ownership

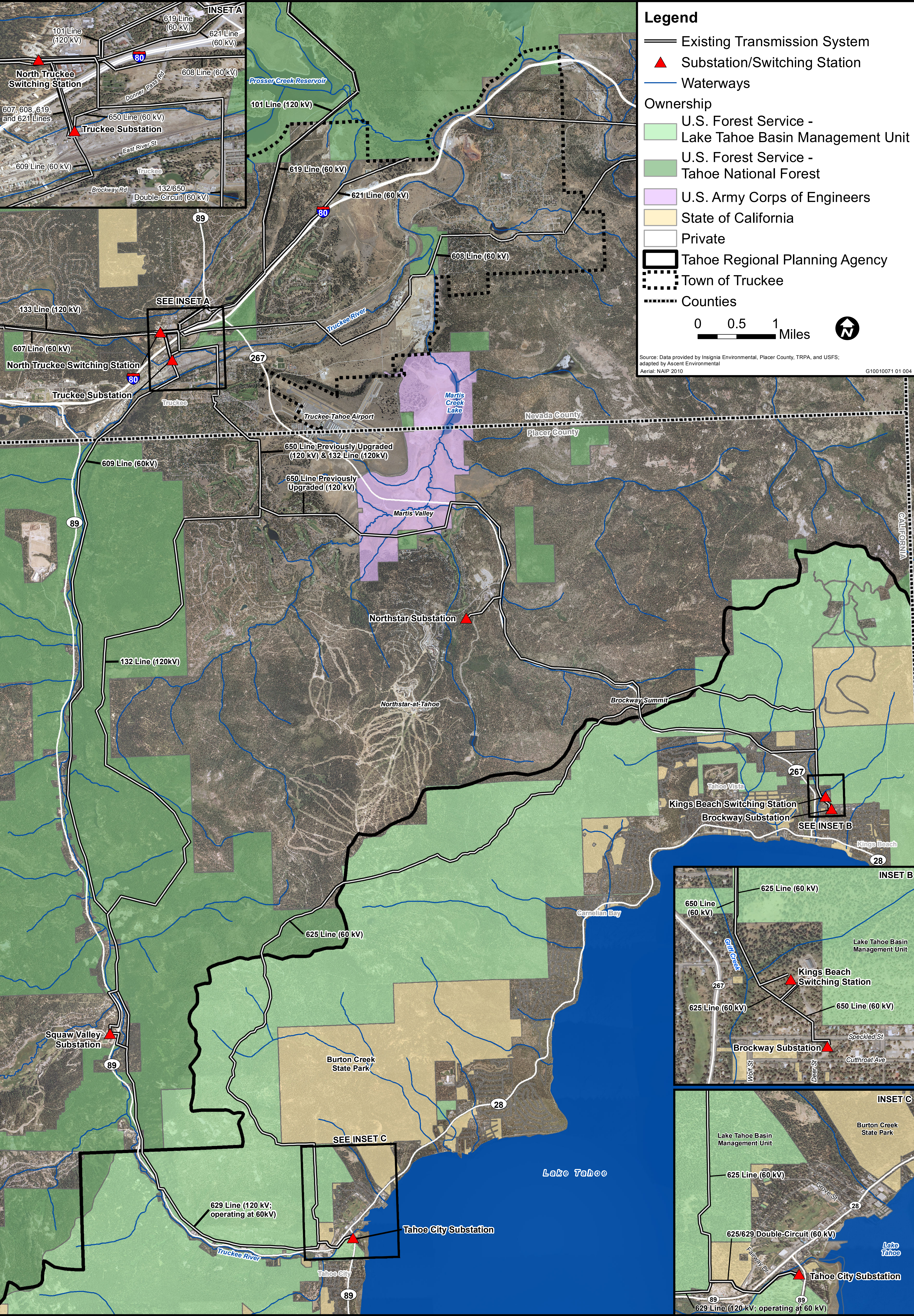
- U.S. Forest Service - Lake Tahoe Basin Management Unit
- U.S. Forest Service - Tahoe National Forest
- U.S. Army Corps of Engineers
- State of California
- Private
- Tahoe Regional Planning Agency
- Town of Truckee
- Counties

0 0.5 1 Miles

Source: Data provided by Insignia Environmental, Placer County, TRPA, and USFS; adapted by Ascent Environmental. Aerial: NAIP 2010. G10010071 01 003





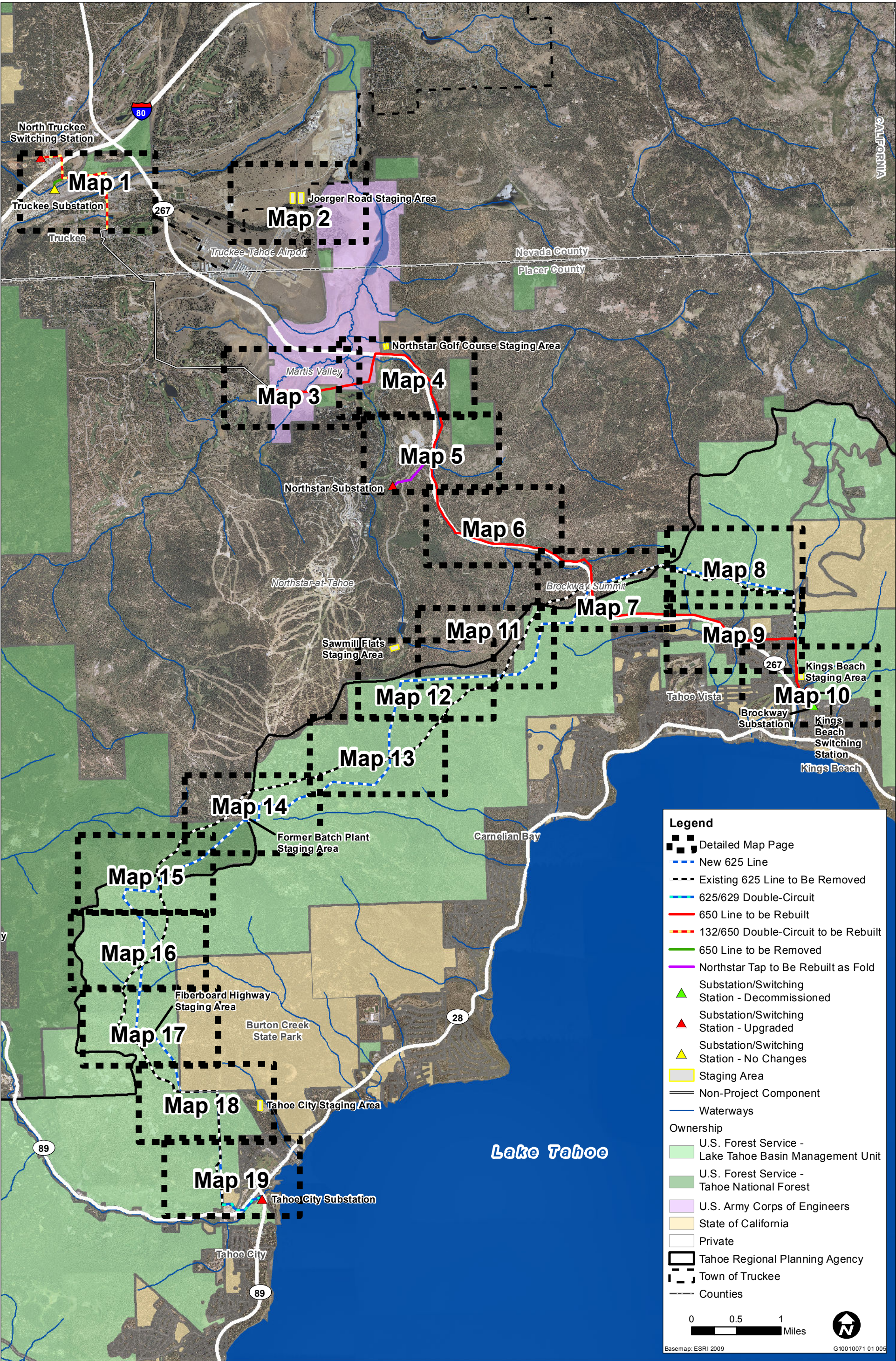


**Existing  
Transmission System**

**California Pacific Electric Company  
625 and 650 Electrical Line Upgrade Project EIS/EIS/EIR**

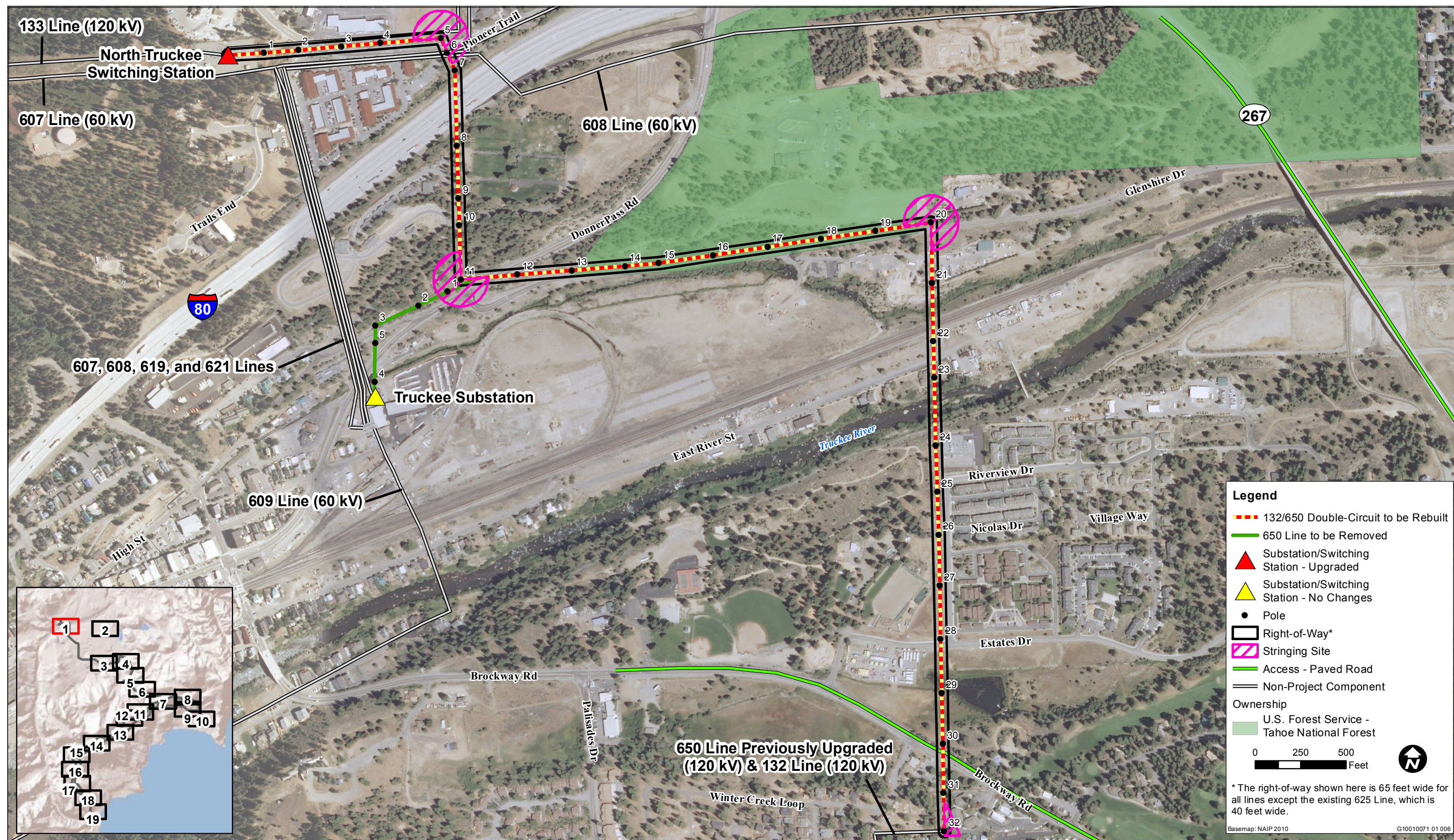






Source: Data provided by Insignia Environmental, Placer County, TRPA, and USFS; adapted by Ascent Environmental





Source: Data provided by Insignia Environmental, Placer County, TRPA, and USFS; adapted by Ascent Environmental

Detailed Map 1

California Pacific Electric Company  
625 and 650 Electrical Line Upgrade Project EIS/EIS/EIR

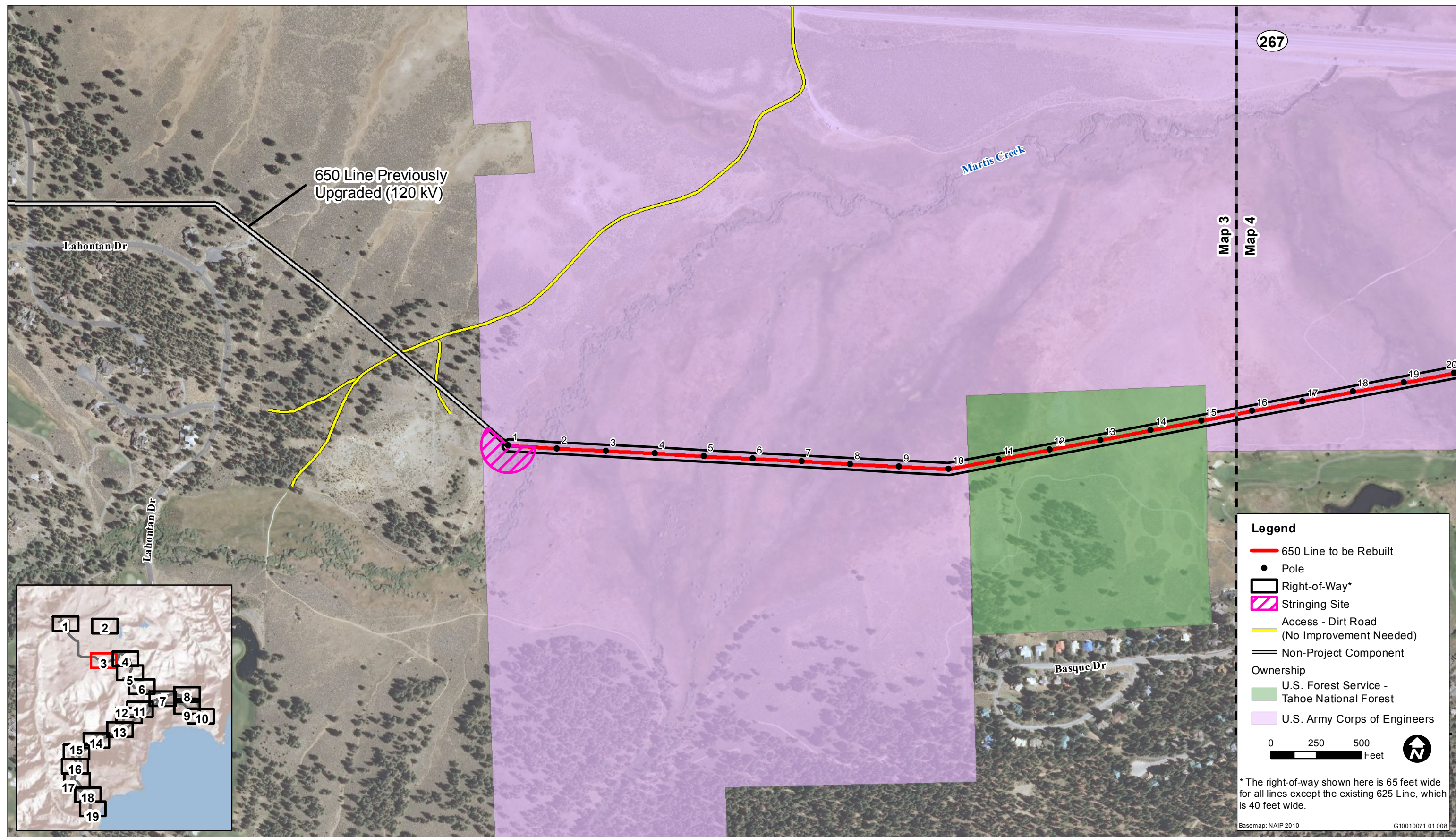






Source: Data provided by Insignia Environmental, Placer County, TRPA, and USFS; adapted by Ascent Environmental

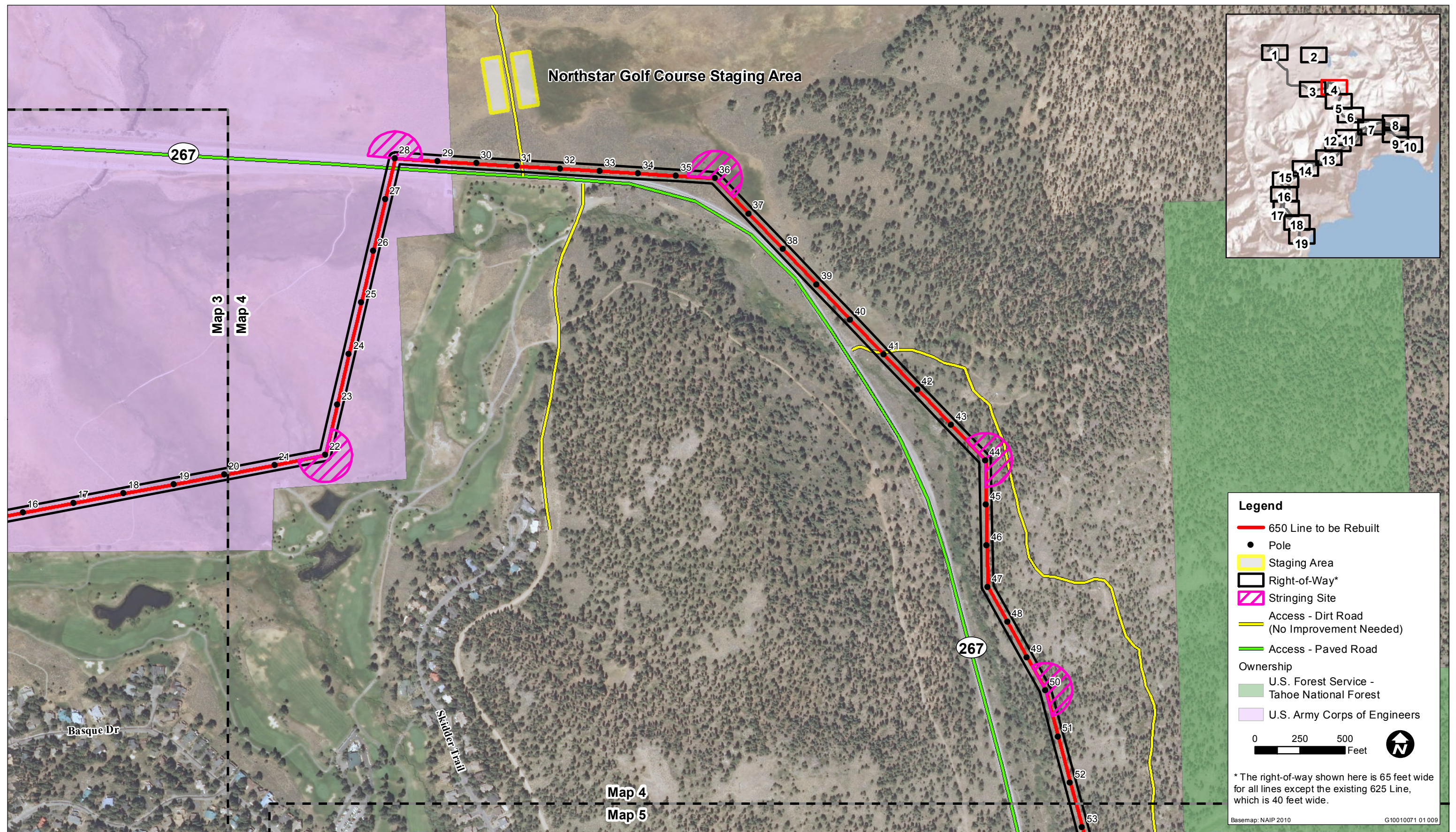




Source: Data provided by Insignia Environmental, Placer County, TRPA, and USFS; adapted by Ascent Environmental

**Detailed Map 3**





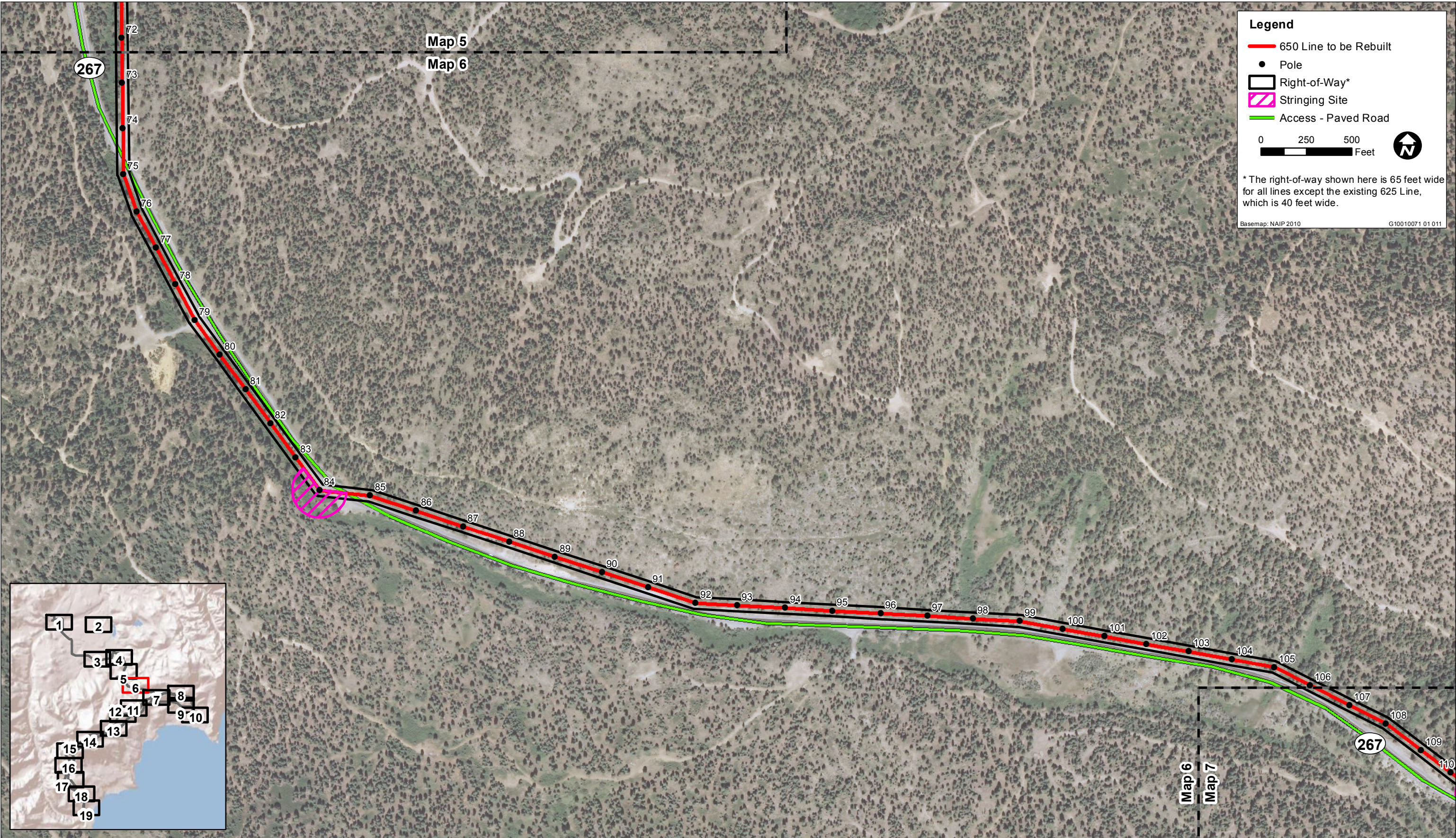
Source: Data provided by Insignia Environmental, Placer County, TRPA, and USFS; adapted by Ascent Environmental

**Detailed Map 4**









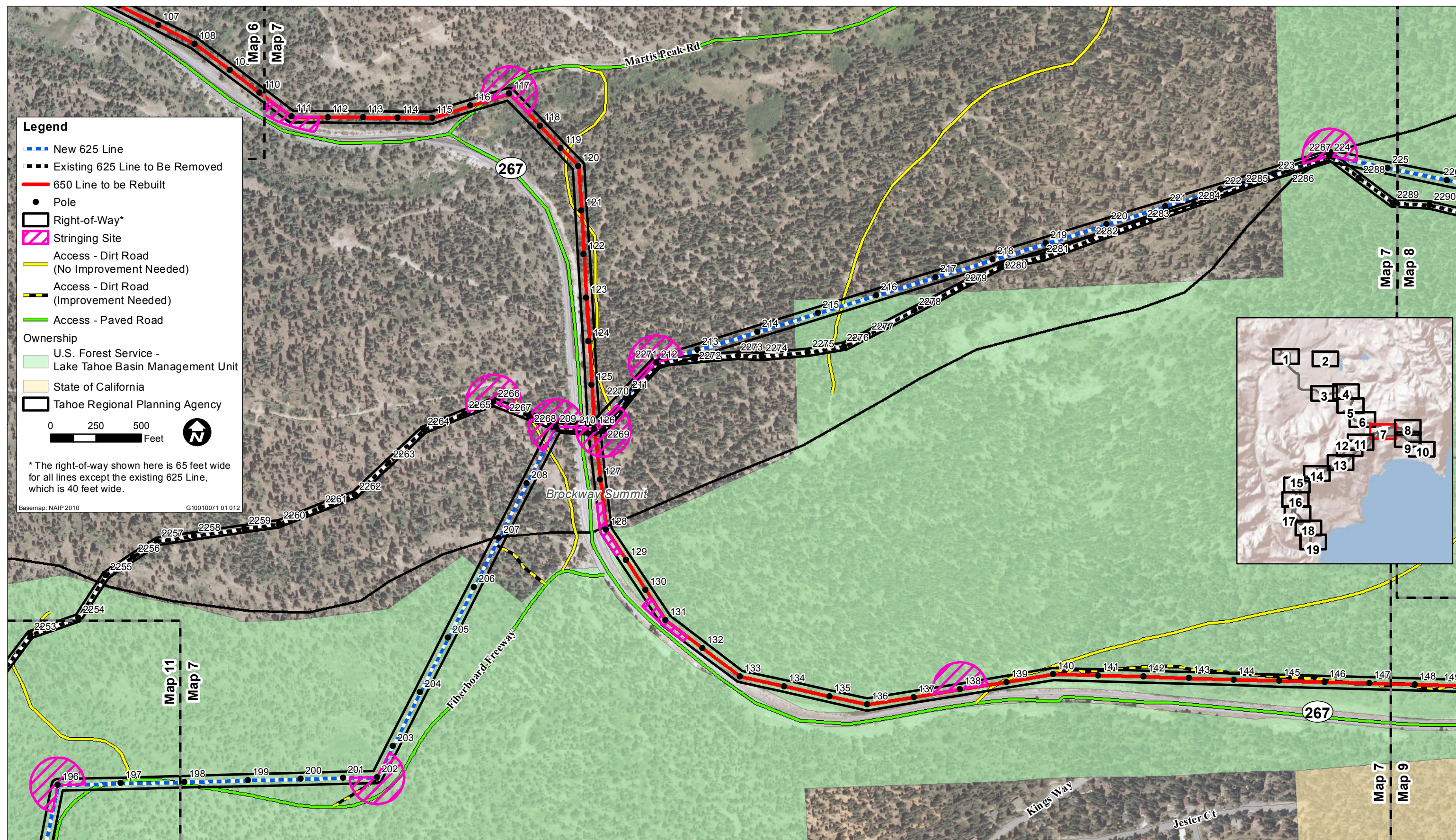
Source: Data provided by Insignia Environmental, Placer County, TRPA, and USFS; adapted by Ascent Environmental

Detailed Map 6

California Pacific Electric Company  
625 and 650 Electrical Line Upgrade Project EIS/EIS/EIR







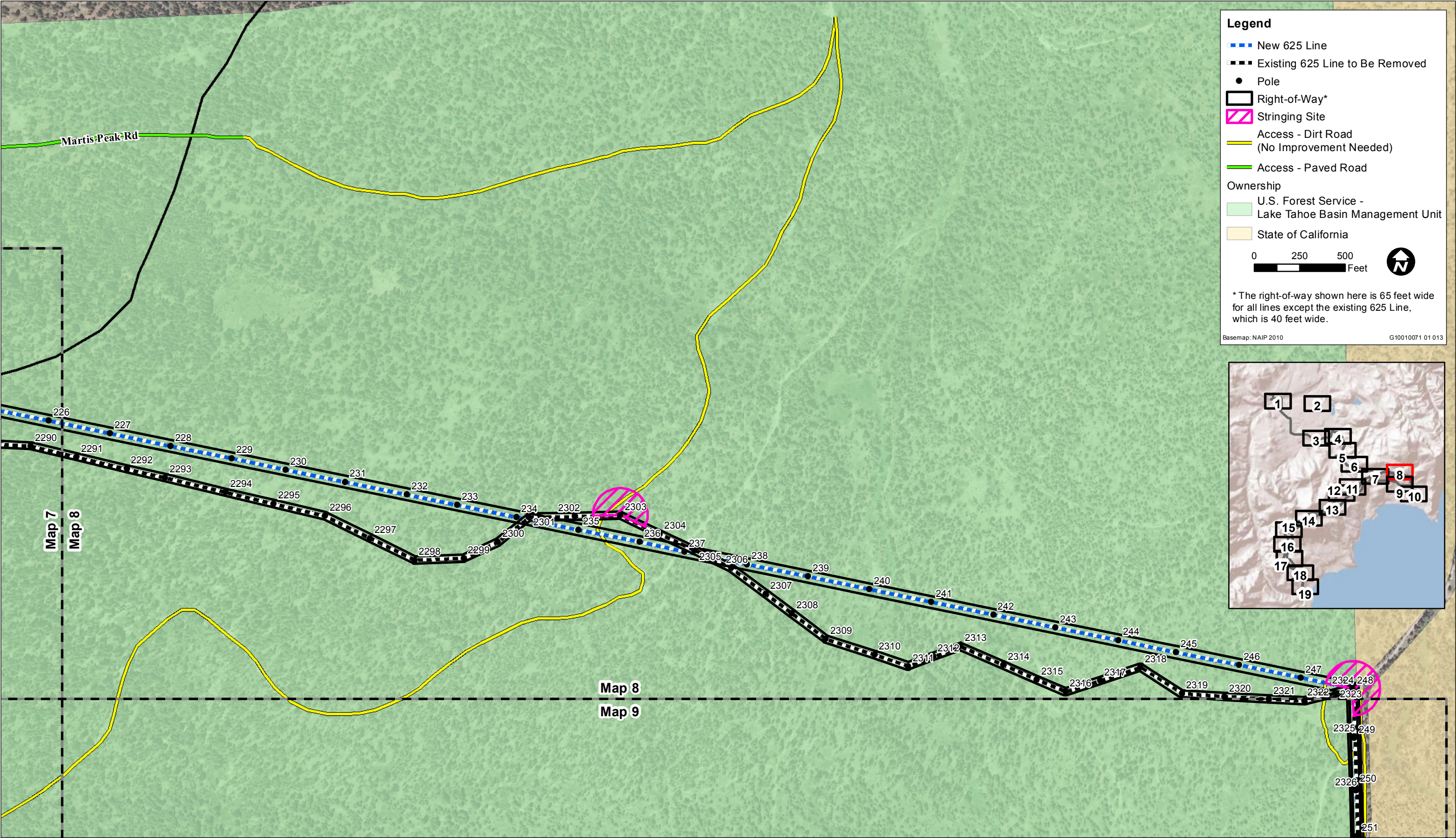
Source: Data provided by Insignia Environmental, Placer County, TRPA, and USFS; adapted by Ascent Environmental

Detailed Map 7

California Pacific Electric Company  
625 and 650 Electrical Line Upgrade Project EIS/EIS/EIR







**Legend**

- ■ ■ New 625 Line
- ■ ■ Existing 625 Line to Be Removed
- Pole
- Right-of-Way\*
- ▨ Stringing Site
- Access - Dirt Road (No Improvement Needed)
- Access - Paved Road

**Ownership**

- U.S. Forest Service - Lake Tahoe Basin Management Unit
- State of California

0 250 500 Feet

\* The right-of-way shown here is 65 feet wide for all lines except the existing 625 Line, which is 40 feet wide.

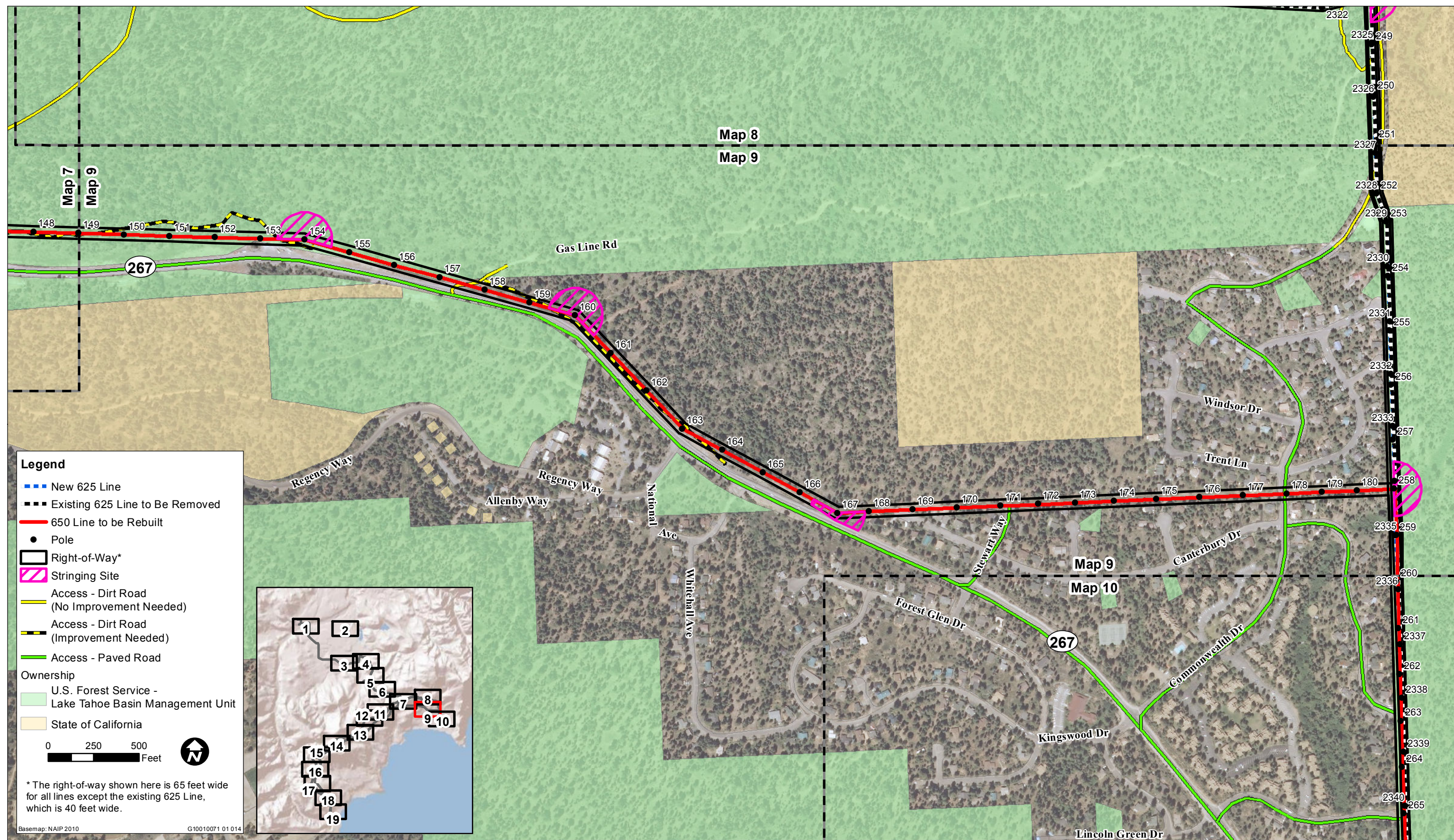
Basemap: NAIP 2010 G10010071 01 013

Source: Data provided by Insignia Environmental, Placer County, TRPA, and USFS; adapted by Ascent Environmental

Detailed Map 8







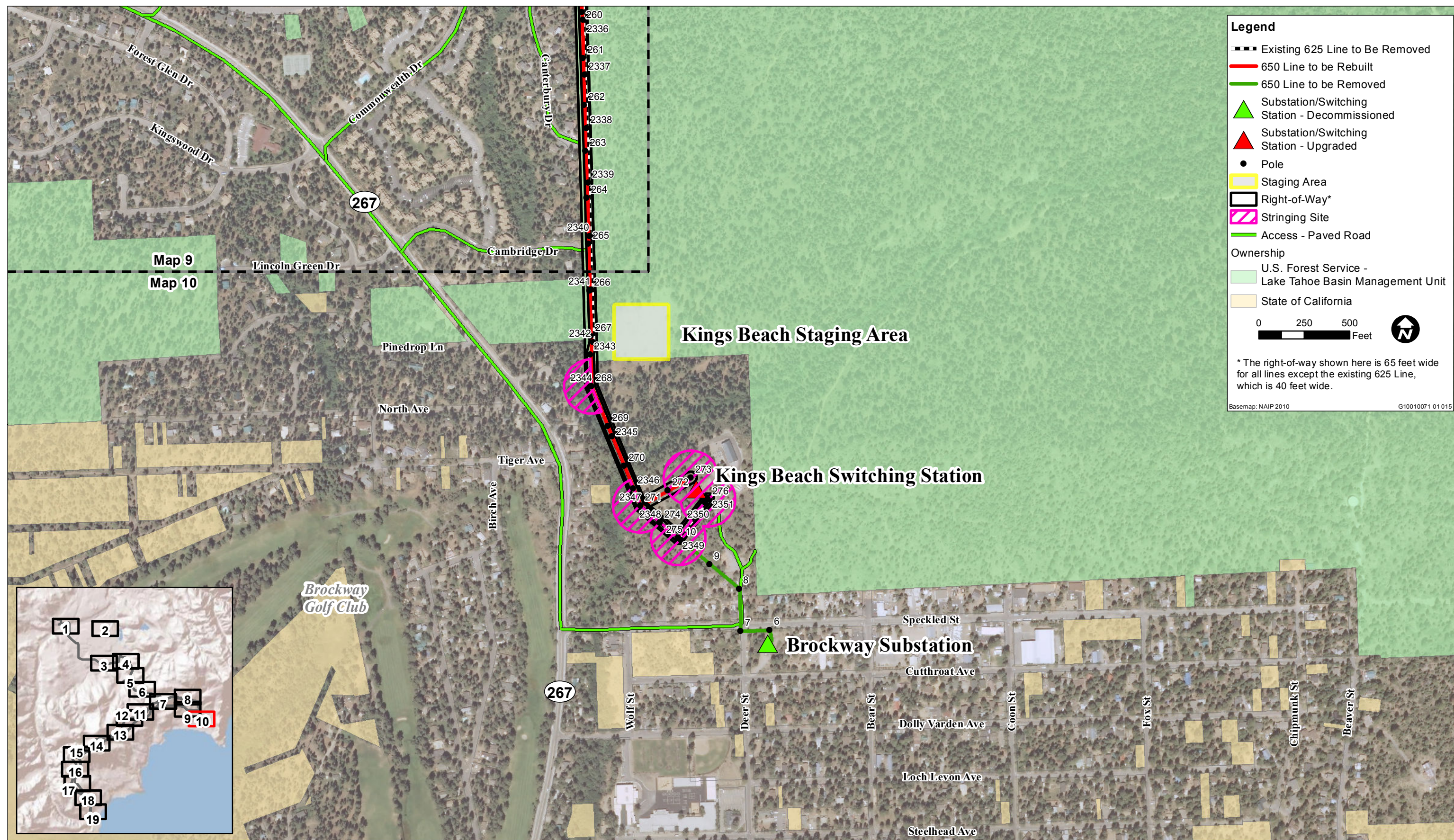
Source: Data provided by Insignia Environmental, Placer County, TRPA, and USFS; adapted by Ascent Environmental

**Detailed Map 9**

**California Pacific Electric Company**  
625 and 650 Electrical Line Upgrade Project EIS/EIS/EIR







Source: Data provided by Insignia Environmental, Placer County, TRPA, and USFS; adapted by Ascent Environmental



**Legend**

- New 625 Line
- Existing 625 Line to Be Removed
- Pole
- Right-of-Way\*
- Stringing Site
- Access - Dirt Road (No Improvement Needed)
- Access - Dirt Road (Improvement Needed)
- Access - Paved Road
- Ownership
  - U.S. Forest Service - Lake Tahoe Basin Management Unit
  - Tahoe Regional Planning Agency

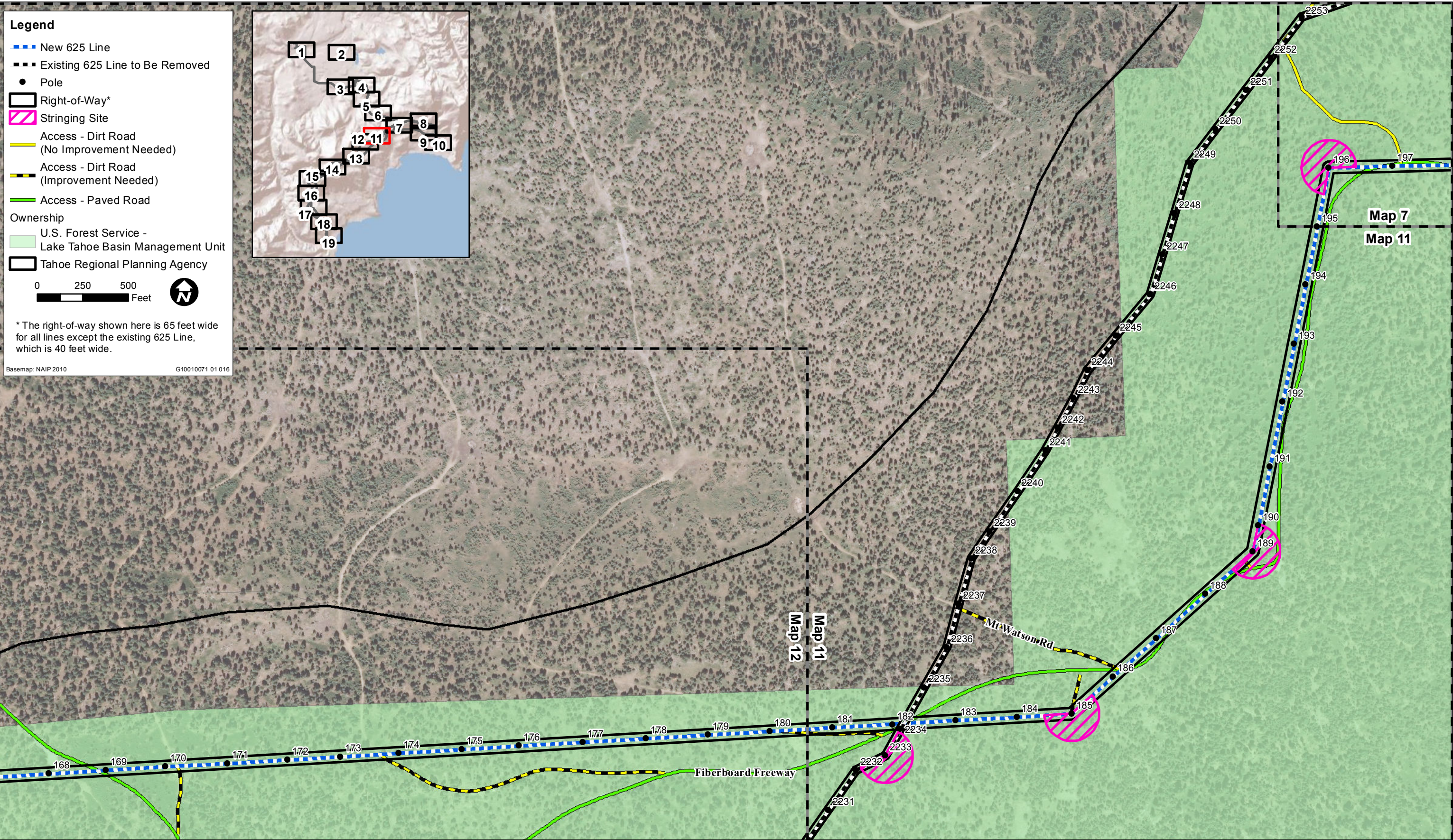
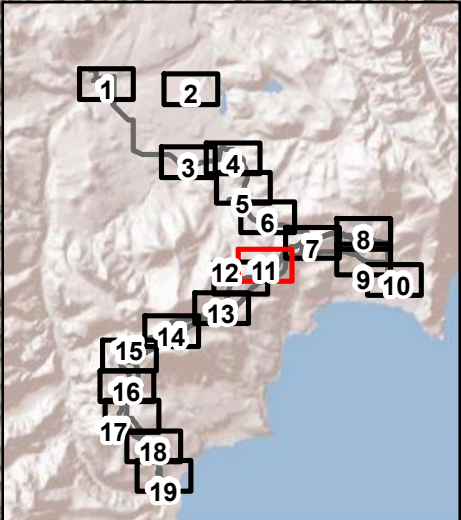
0250500

Feet

\* The right-of-way shown here is 65 feet wide for all lines except the existing 625 Line, which is 40 feet wide.

Basemap: NAIP 2010

G10010071 01 016



Source: Data provided by Insignia Environmental, Placer County, TRPA, and USFS; adapted by Ascent Environmental

Detailed Map 11





**Legend**

- New 625 Line
- Existing 625 Line to Be Removed
- Pole
- Staging Area
- Right-of-Way\*
- Stringing Site
- Access - Dirt Road (No Improvement Needed)
- Access - Dirt Road (Improvement Needed)
- Access - Paved Road

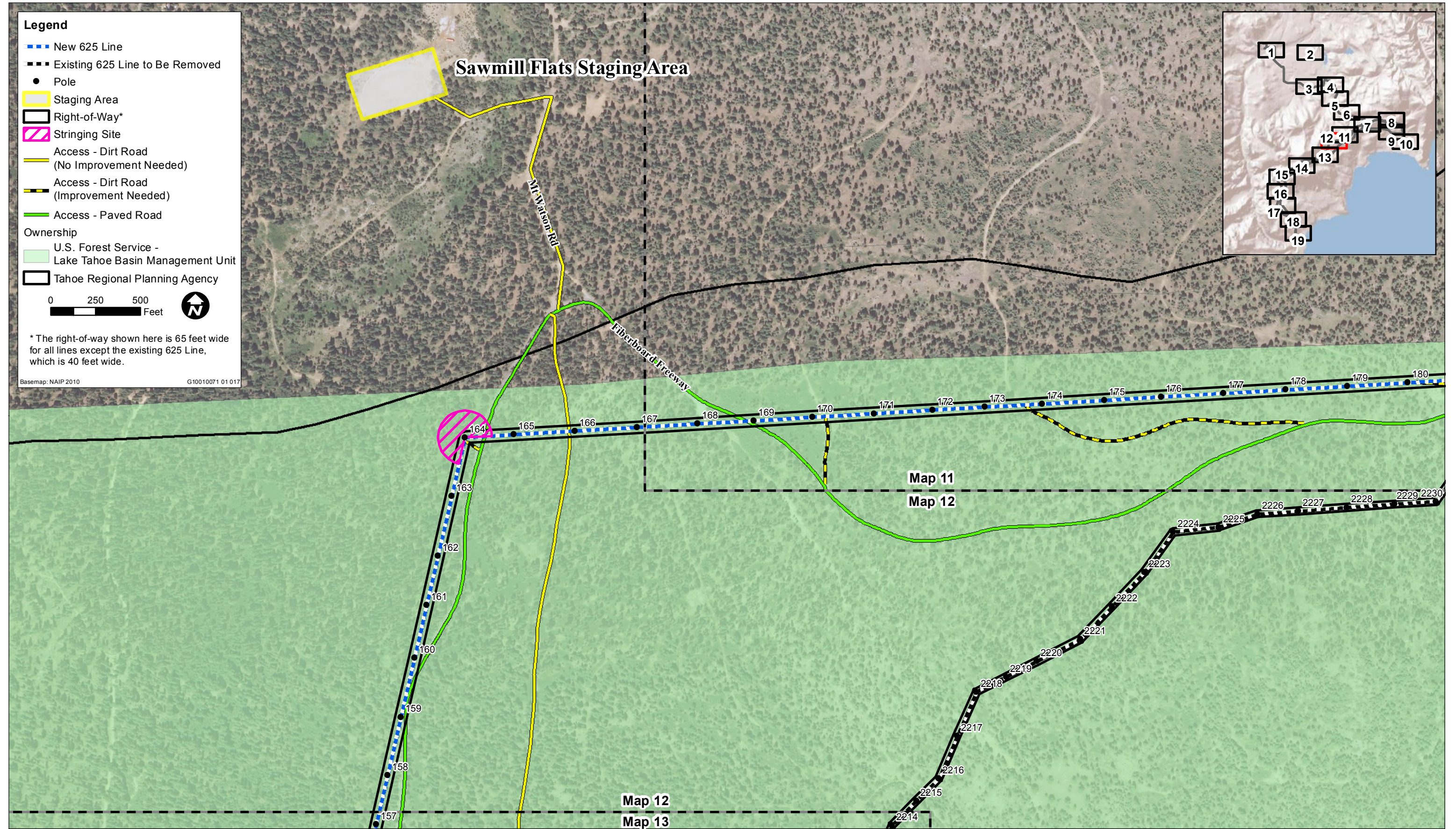
**Ownership**

- U.S. Forest Service - Lake Tahoe Basin Management Unit
- Tahoe Regional Planning Agency

0 250 500 Feet

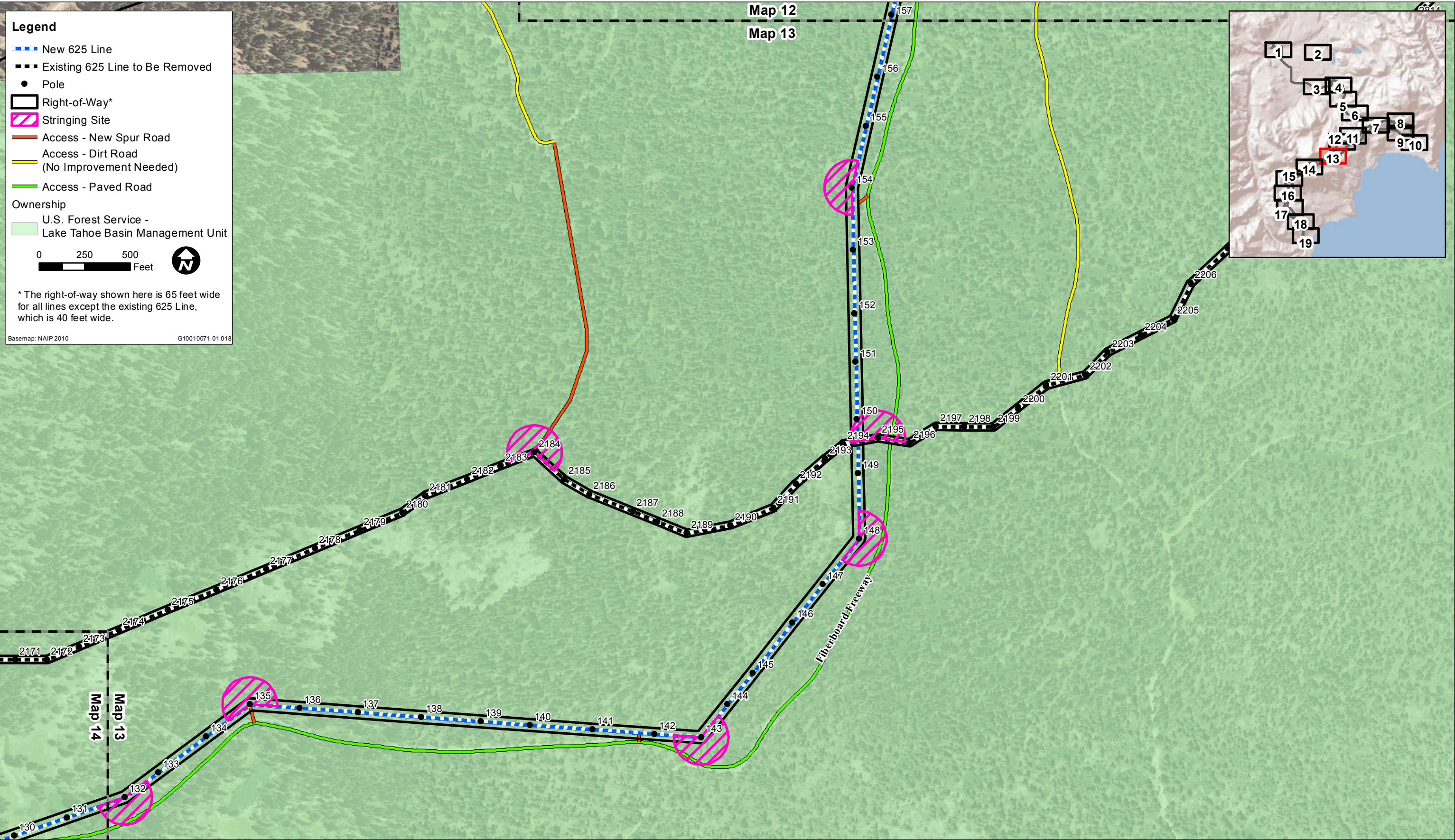
\* The right-of-way shown here is 65 feet wide for all lines except the existing 625 Line, which is 40 feet wide.

Basemap: NAIP 2010 G10010071 01 017



Source: Data provided by Insignia Environmental, Placer County, TRPA, and USFS; adapted by Ascent Environmental



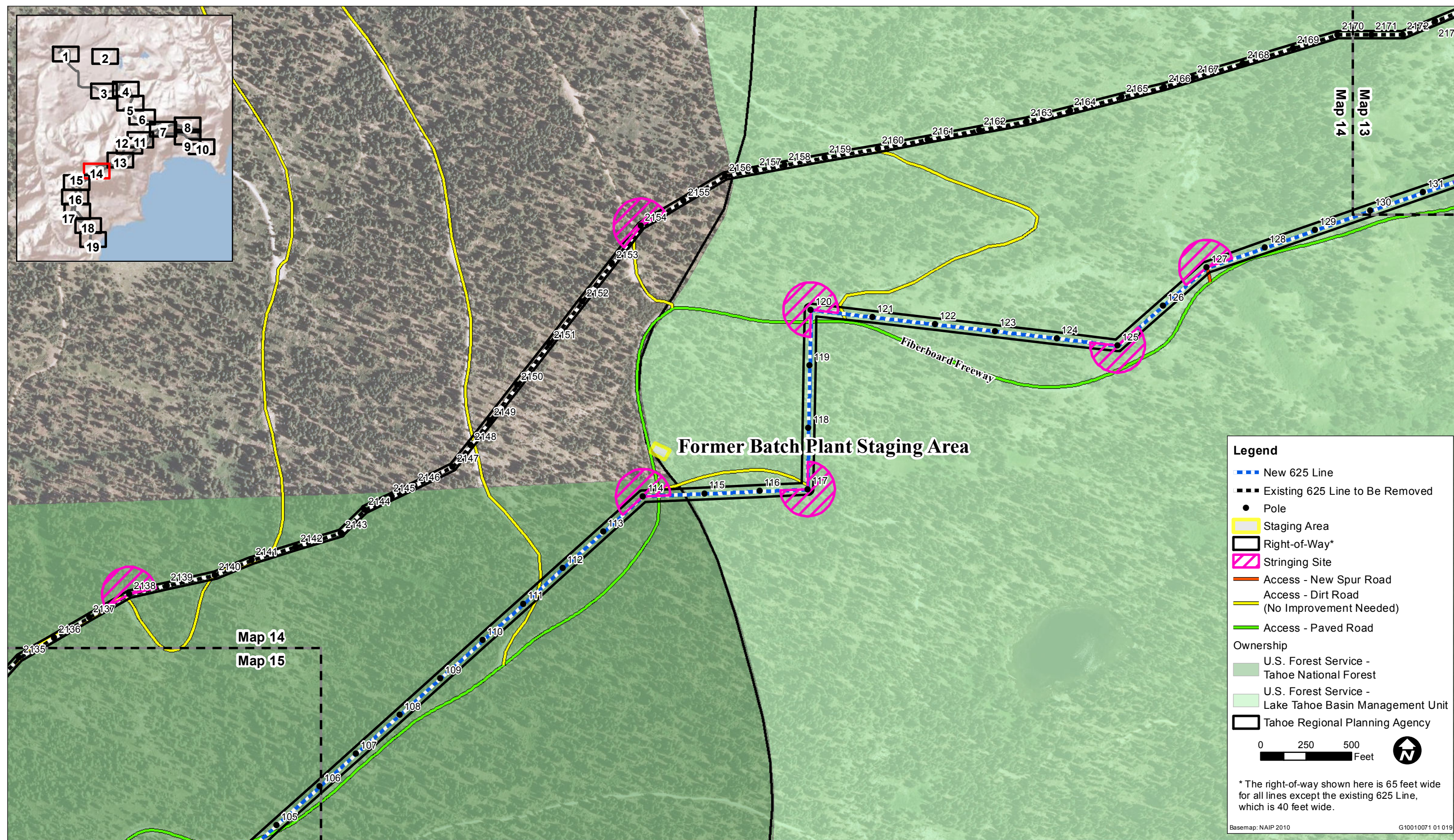


Source: Data provided by Insignia Environmental, Placer County, TRPA, and USFS; adapted by Ascent Environmental

Detailed Map 13







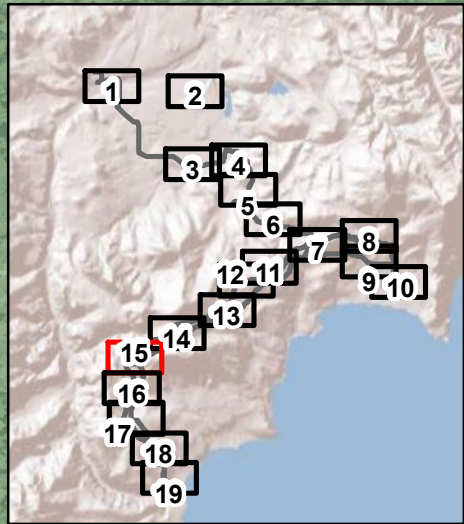
Source: Data provided by Insignia Environmental, Placer County, TRPA, and USFS; adapted by Ascent Environmental

Detailed Map 14

California Pacific Electric Company  
625 and 650 Electrical Line Upgrade Project EIS/EIS/EIR







**Legend**

- New 625 Line
- Existing 625 Line to Be Removed
- Pole
- Right-of-Way\*
- ▨ Stringing Site
- Access - Dirt Road (No Improvement Needed)
- Access - Paved Road

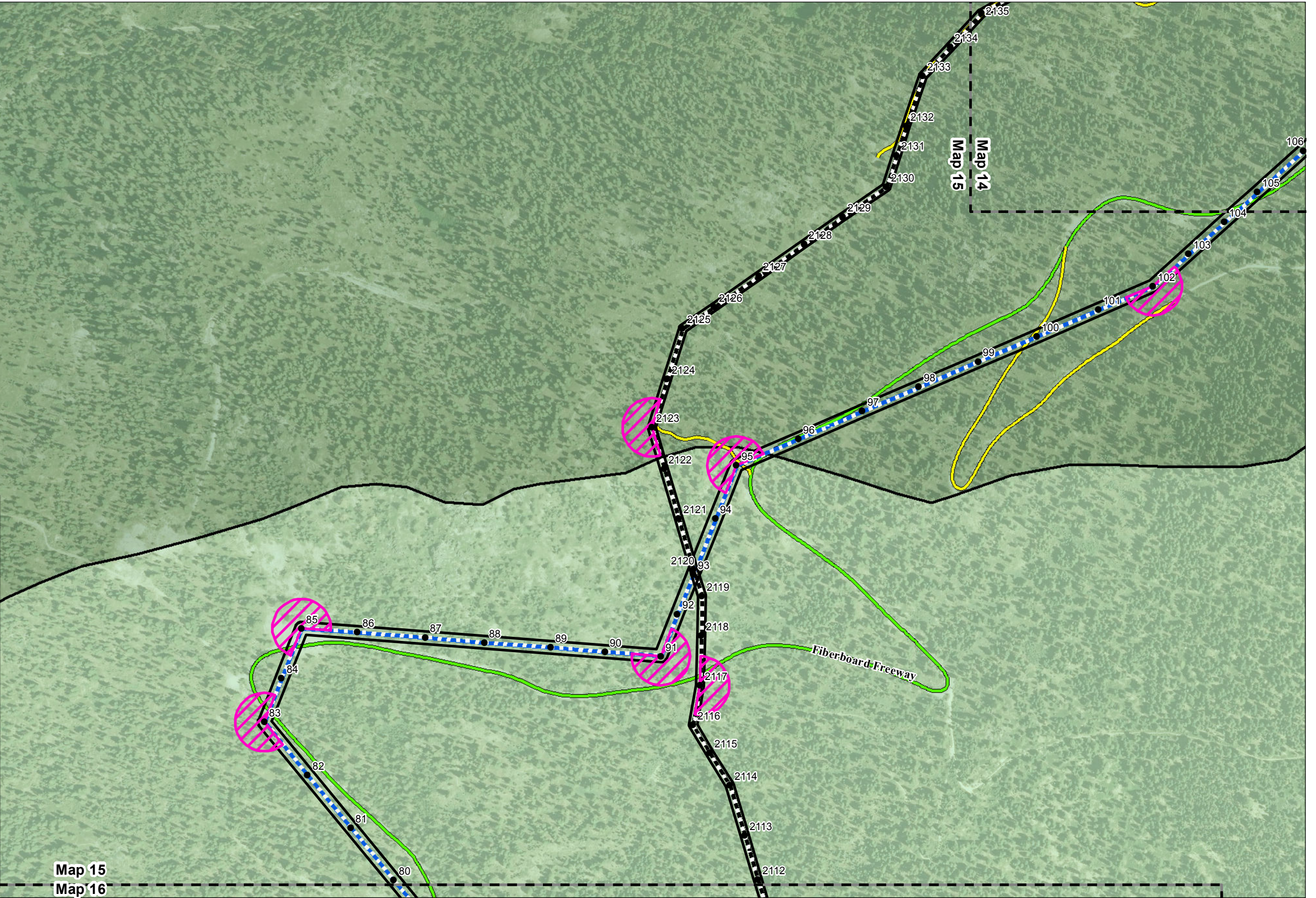
**Ownership**

- U.S. Forest Service - Tahoe National Forest
- U.S. Forest Service - Lake Tahoe Basin Management Unit
- Tahoe Regional Planning Agency

0 250 500 Feet

\* The right-of-way shown here is 65 feet wide for all lines except the existing 625 Line, which is 40 feet wide.

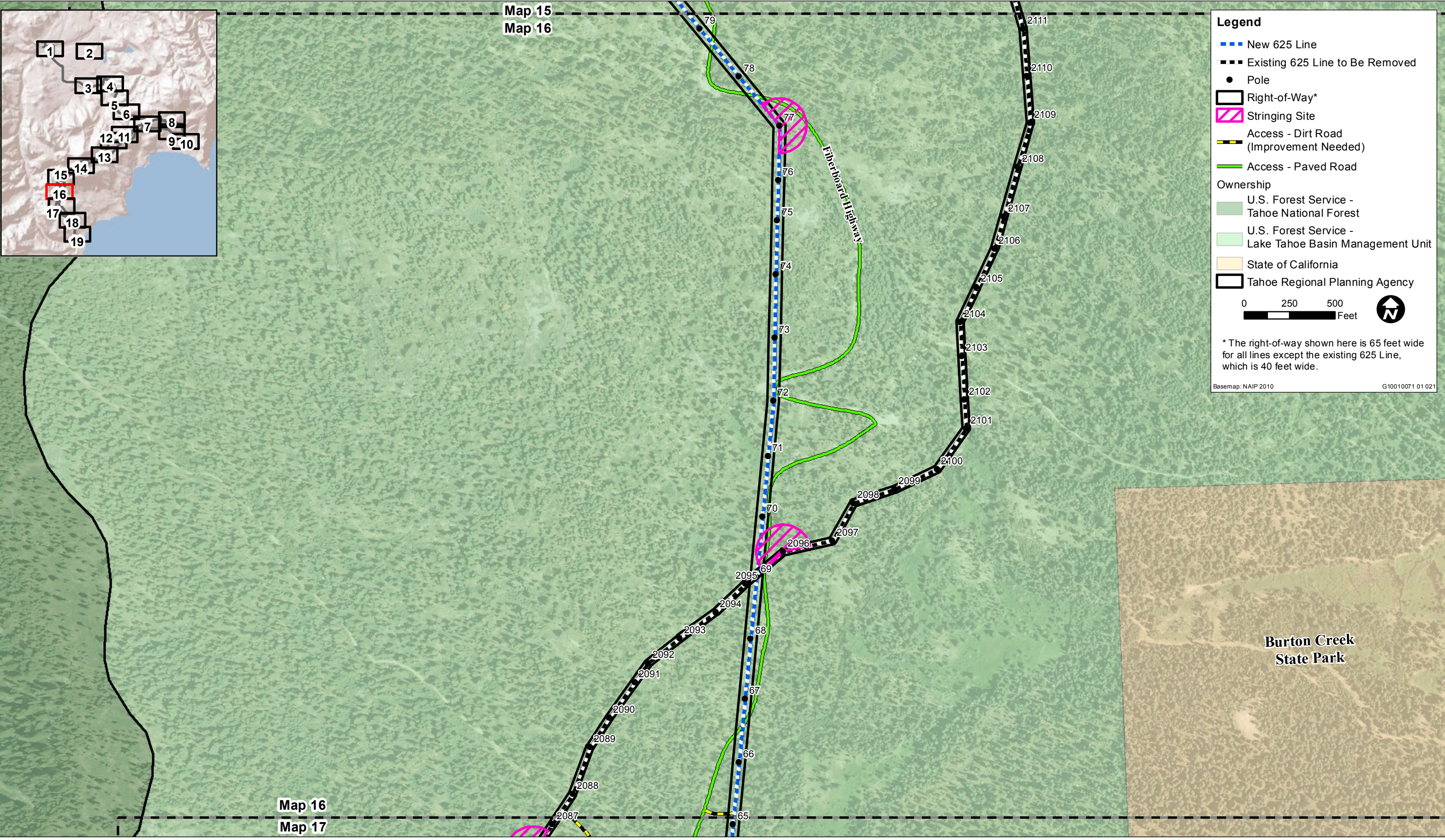
Basemap: NAIP 2010 G10010071 01 020



Map 15  
Map 16

Source: Data provided by Insignia Environmental, Placer County, TRPA, and USFS; adapted by Ascent Environmental



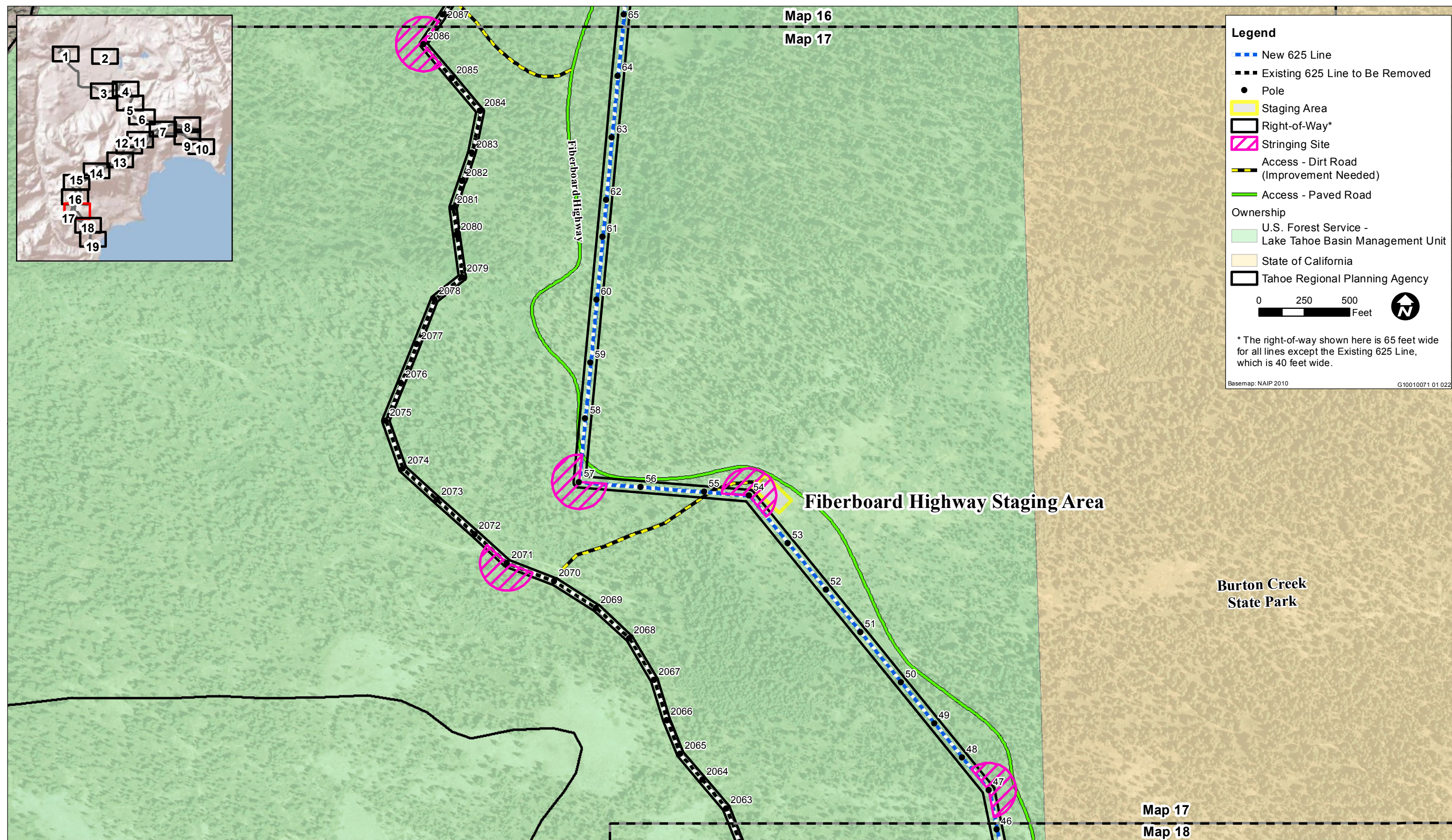


Source: Data provided by Insignia Environmental, Placer County, TRPA, and USFS; adapted by Ascent Environmental

Detailed Map 16

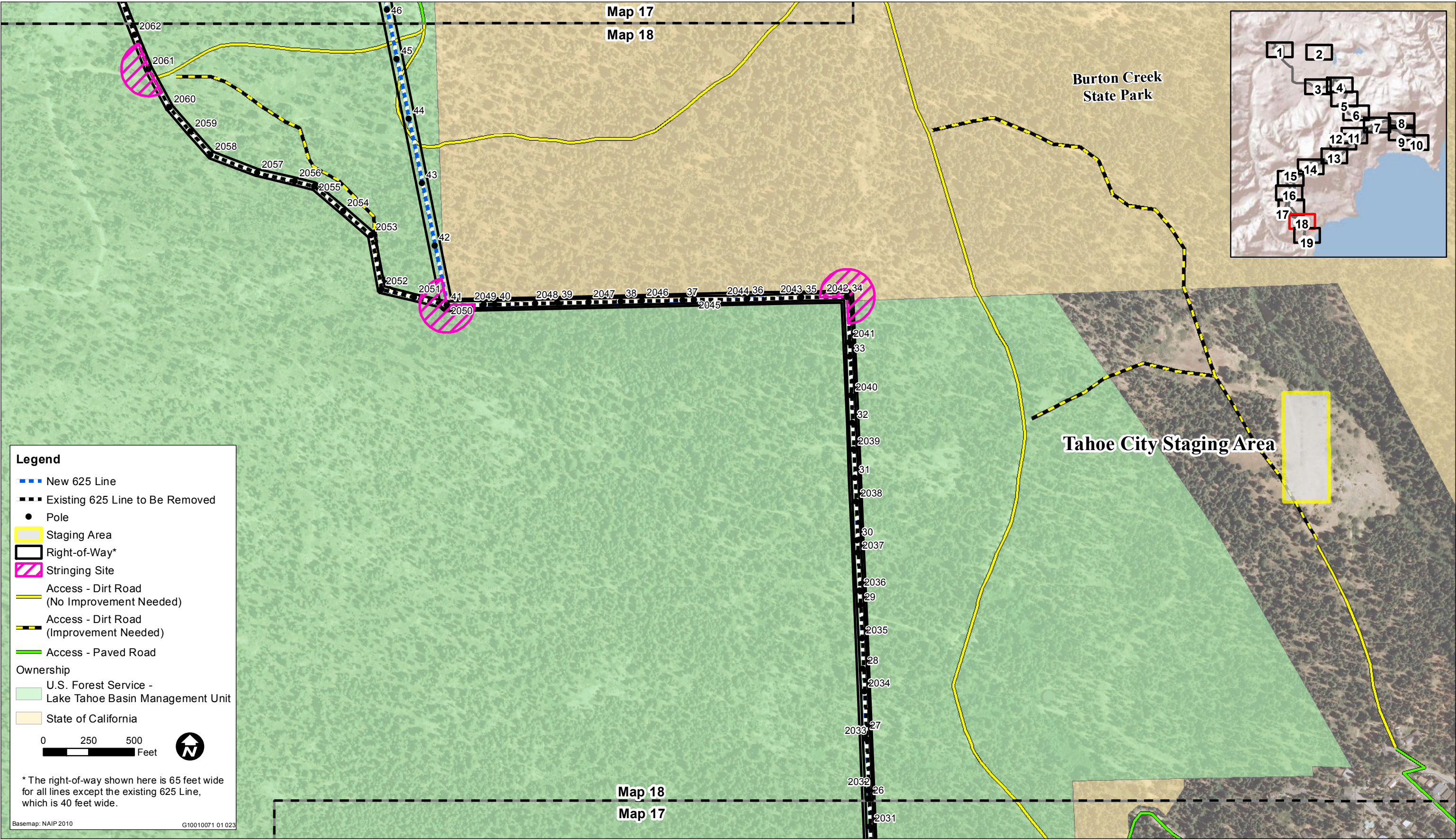






**Detailed Map 17**





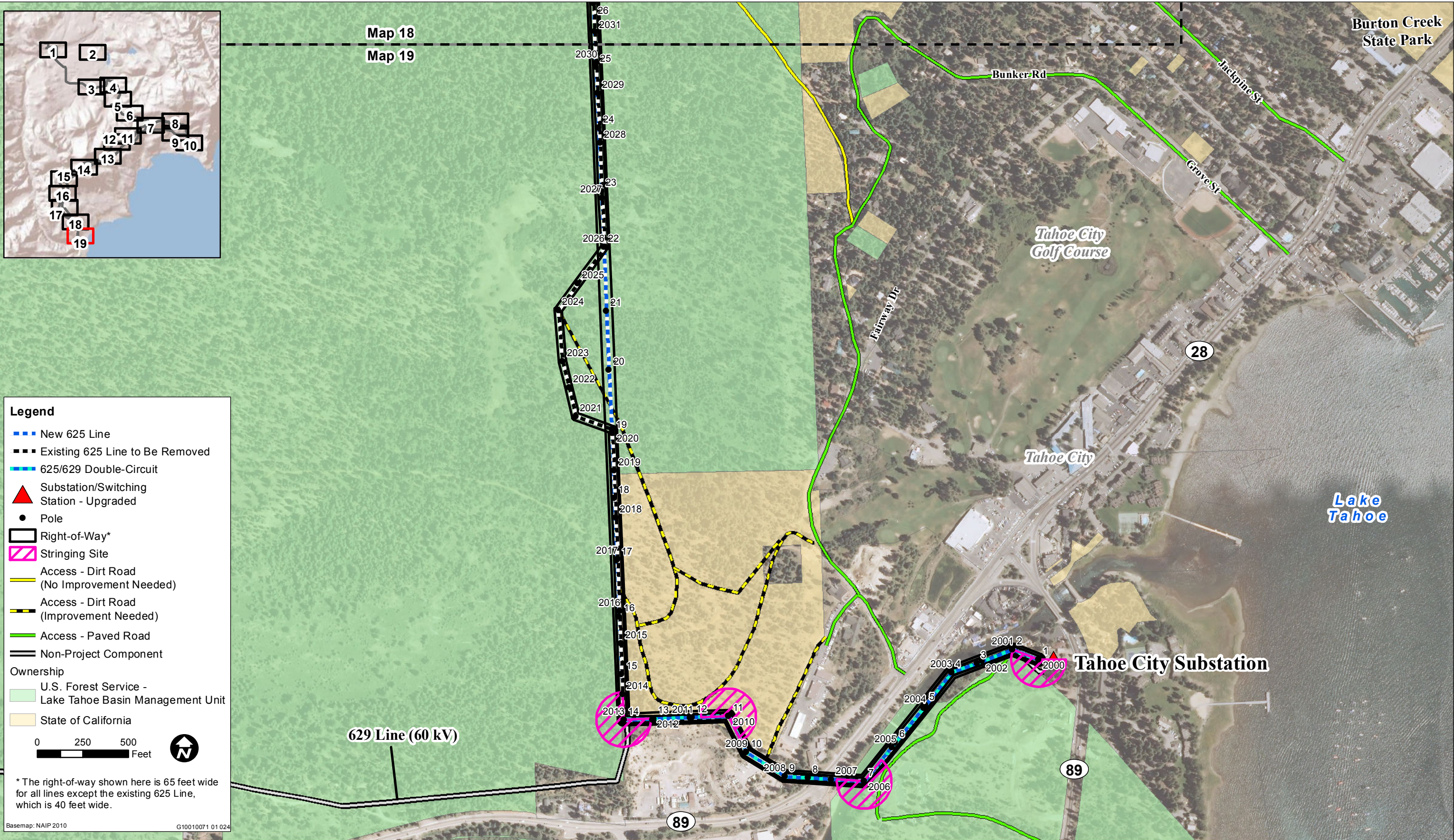
Source: Data provided by Insignia Environmental, Placer County, TRPA, and USFS; adapted by Ascent Environmental

Detailed Map 18

California Pacific Electric Company  
625 and 650 Electrical Line Upgrade Project EIS/EIS/EIR



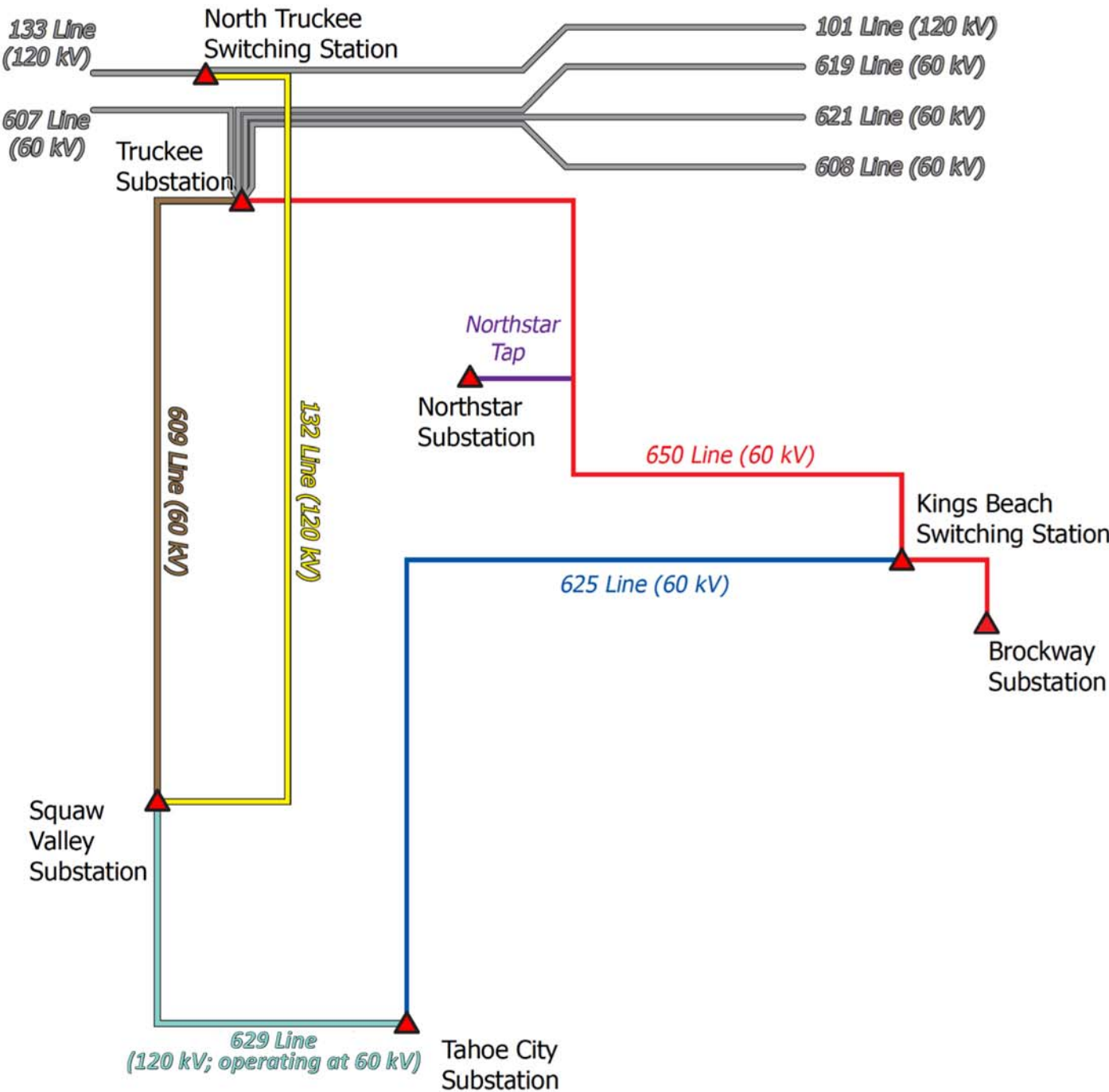




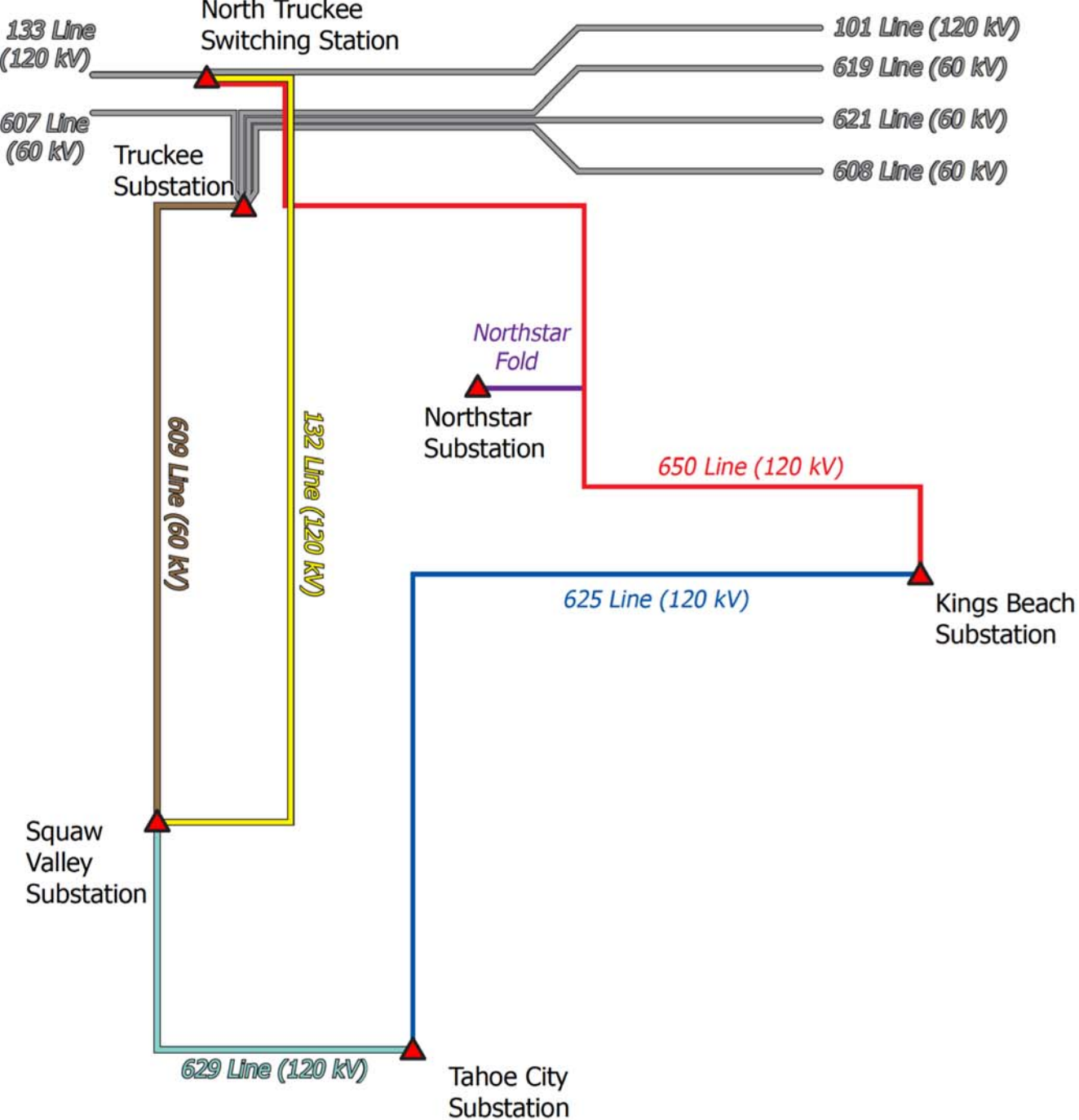
Source: Data provided by Insignia Environmental, Placer County, TRPA, and USFS; adapted by Ascent Environmental



Existing System



Proposed System



Source: Sierra Pacific 2010