

MEMORANDUM

Date: January 27, 2011

To: TRPA Hearings Officer

From: TRPA Staff

Subject: Public Comment on the Draft Nevada Bikeway South Demonstration Project Joint Tahoe Regional Planning Agency (TRPA)/National Environmental Quality Act (NEPA) Environmental Assessment

---

Requested Action: No formal action is proposed for this item at this time. Staff is requesting that the Hearings Officer provide comments and solicit additional comments from the public on the environmental document for the subject project.

Project Description/Background: In May 2007, the Tahoe Transportation District (TTD) entered into an Interlocal Agreement with the TRPA, the United States Forest Service (USFS), Nevada Division of State Lands, Nevada Division of State Parks, Carson City, Washoe County, Douglas County, and Incline General Improvement District to cooperatively undertake the Nevada Stateline to Stateline Bikeway Project, including the design and construction of a North and South Demonstration Project. The North Demonstration Project is a trail segment that begins at the southern end of Incline Village and continues to Sand Harbor State Park, while the South Demonstration Project begins at the Nevada and California state line in Stateline, Nevada and continues to Round Hill Pines Beach Resort. The demonstration projects were identified for expedited development, as initial assessments identified fewer constraints to implementing these two respective projects. Under the roles and responsibilities section of the Interlocal Agreement, the TTD is identified as the lead agency for “the implementation of the recommended trail alignment and two Demonstration Projects.”

In January 2009 and February 2009, the TTD hired Carl Hasty and Alfred Knotts as District Manager and Transportation Projects Manager, respectively. Consistent with the roles and responsibilities outlined in the Interlocal Agreement, project management duties were officially transferred to the TTD in March 2009 and have since been managed by TTD Staff. These duties included the development of a Feasibility Report for potential trail alignment for the segment between Sand Harbor and Round Hill Pines Resort, as well as the planning, design, and construction of the two demonstration projects. To date, the TTD has successfully managed the projects in a timely and cost effective manner, which has resulted in the development of a public draft Joint TRPA/NEPA Environmental Assessment for the South Demonstration Project and a Draft Feasibility Report for the Sand Harbor to Round Hill Pines segment. This scheduled public hearing focuses solely on the public draft Joint TRPA/NEPA Environmental Assessment for the South Demonstration Project.

Discussion: The USFS and TRPA have directed the preparation of a joint Draft Environmental Assessment (EA) pursuant to National Environmental Policy Act (NEPA) regulations, TRPA's Compact, Chapter 5 of the TRPA Code of Ordinances, and Article 6 of the TRPA Rules of Procedure for the Nevada Stateline-to-Stateline Bikeway, South Demonstration Project. The approximately 3.2-mile shared-use path would be within the Lake Tahoe Basin Management Unit (LTBMU) Round Hill and Urban Lots management areas defined in the Forest Plan. It would cross portions of the following TRPA Plan Area Statements: 068 (Round Mound), 070A (Edgewood), 070B (Rabe), and 077 (Oliver Park), and would be contiguous to the Stateline and Kingsbury Community Plan areas. The shared-use path meets the definition of a linear public facility (LPF) in Chapter 2, "Definitions," of the TRPA Code of Ordinances, and as such, would be subject to the applicable TRPA Code provisions that apply to LPF. Please see Attachment A for project location map.

The Draft EA analyzes three alternatives for the South Demonstration Project (see Attachment B – Alternative Alignment Map), identified as Alternative A, Alternative B, and Alternative C (No Project/No Action Alternative). Under both action alternatives (A and B), the project would be constructed in three phases. Each phase would consist of one segment of shared-use path, approximately one mile in length. These segments and the affected parcels include:

- ▶ Segment 1: The California/Nevada state line on Lake Parkway to the north side of Kahle Drive. This segment includes an option to narrow the width of Lake Parkway west of U.S. 50 by seven feet.
- ▶ Segment 2: North side of Kahle Drive to the existing shared-use path on the south side of Elks Point Road (Elks Point Bike Path).
- ▶ Segment 3: South side of Elks Point Road (Elks Point Bike Path) to Round Hill Pines Beach. This segment includes upper and lower optional alignments around the west side of Round Mound.

Segments 1 and 3, including the optional alignments, would be the same with both Alternatives A and B. Similarly, the proposed expansion and enhancement of the existing parking lot with a restroom facility at the northwest corner of the intersection of U.S. 50 and Kahle Drive and use of a portion of the Elks Point Bike Path in Segment 2 would be the same with both Alternatives A and B.

The primary difference between Alternatives A and B is the alignment of the shared-use path through Rabe Meadow, between Kahle Drive and Elks Point Road (Segment 2). The Alternative A and B alignment options in Segment 2 were determined to best meet the purpose and need and project goals and objectives and are intended to minimize effects on cultural and biological resources and stream environment zone (SEZ) areas; minimize tree removal; maximize use of existing disturbed areas; and enhance user experience.

The public comment period for the Draft EA commenced on January 13, 2011 and will conclude at 11:59 p.m. on February 14, 2011. The Draft EA is available for the public to review at the USFS LTBMU, 35 College Drive, South Lake Tahoe, CA; the TRPA, 128

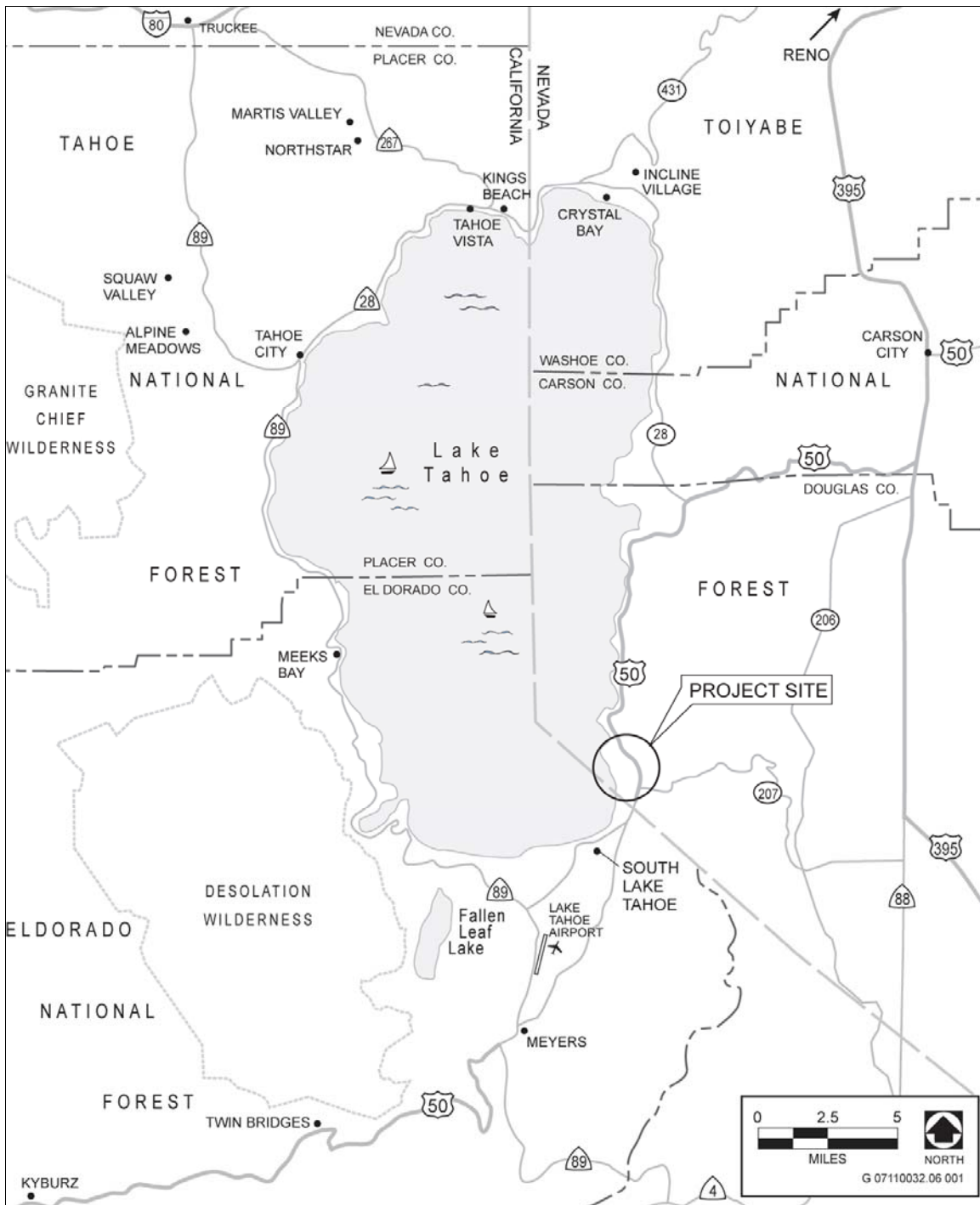
Market Street, Stateline, NV; and the Douglas County Library, 233 Warrior Way, Zephyr Cove, NV. In addition, the document can be found on the USFS LTBMU website (under Land & Resources Management, Projects); the TRPA website (under Major Projects and Environmental Documents); and the project website at <http://www.nvtahoebikeway.com> (under Document Library, South Demonstration Project). Three public hearings are scheduled to solicit comments on the Draft EA. The first was at the Douglas County Board of County Commissioners meeting on Thursday, January 20, 2011. The second was at the TTD meeting on Friday, January 21, 2011. The third will be before the TRPA Public Hearings Officer on February 3, 2011, beginning at 2:00 p.m. at the Tahoe Regional Planning Agency, 128 Market Street, Stateline, NV 89449.

Written responses should be sent at the earliest possible date, as comments received after 11:59 p.m. on February 14, 2011 are not required to be considered and may not be included in the final document. Please send written responses to Garrett Villanueva at USFS at the address shown above. Responses should include the name of the private party and/or the contact person at your agency or organization. A complete Notice of Availability is included in this item as Attachment C.

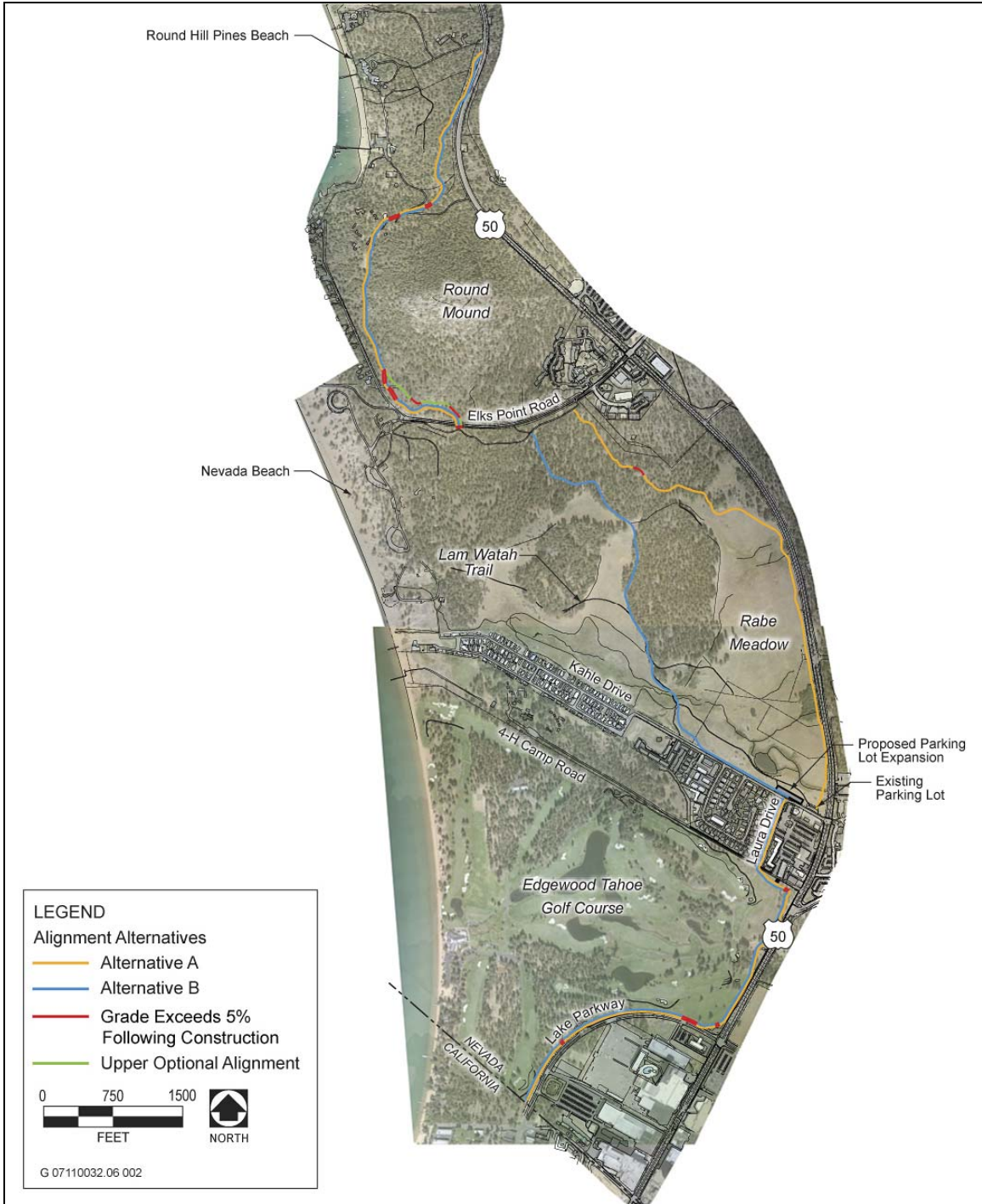
If you have any questions or comments regarding this item, please contact Brian Judge at [bjudge@trpa.org](mailto:bjudge@trpa.org) or (775) 589-5262.

#### Attachments

- A. Project location map
- B. Alternative Alignment Map
- C. Notice of Availability



PROJECT LOCATION MAP



**TAHOE REGIONAL PLANNING AGENCY**  
P.O. Box 5310  
128 Market Street  
Stateline, Nevada 89449-5310  
Phone: (775) 588-4547  
Fax: (775) 588-4527

**U.S. DEPARTMENT OF AGRICULTURE  
FOREST SERVICE  
LAKE TAHOE BASIN MANAGEMENT UNIT**  
35 College Drive  
South Lake Tahoe, CA 96150  
(530) 543-2600  
Fax: (530) 543-2693

## NOTICE OF AVAILABILITY, COMMENT, AND PUBLIC HEARINGS

**To:** Nevada State Clearinghouse  
California State Clearinghouse  
Cooperating Agencies  
Other Interested Public Agencies  
Interested Parties and Organizations  
Affected Property Owners (within 300 feet)

**Subject:** Joint TRPA and NEPA Draft EA for the Nevada Stateline-to-Stateline Bikeway, South Demonstration Project in Stateline, Nevada

### From the Lead Agencies:

Tahoe Regional Planning Agency (TRPA)  
P.O. Box 5310  
Stateline, NV 89449  
Contact: Jeanne McNamara  
Acting Branch Chief, Environmental  
Improvement Branch  
Phone: (775) 589-5252  
Fax: (775) 588-4527  
Email: jmcnamara@trpa.org

U.S. Forest Service (USFS)  
Lake Tahoe Basin Management Unit  
35 College Drive  
South Lake Tahoe, CA 96150-4500  
Contact: Garrett Villanueva  
Assistant Forest Engineer  
Phone: (530) 543-2762  
Fax: (530) 543-2693  
Email: gvillanueva@fs.fed.us

The USFS and TRPA have directed the preparation of a joint Draft Environmental Assessment (EA) pursuant to National Environmental Policy Act (NEPA) regulations, TRPA's Compact, Chapter 5 of the TRPA Code of Ordinances, and Article 6 of the TRPA Rules of Procedure for the Nevada Stateline-to-Stateline Bikeway, South Demonstration Project.

The South Demonstration Project is a component of the larger Nevada Stateline-to-Stateline Bikeway Project, which encompasses an approximately 30-mile-long corridor between Stateline, Nevada and Crystal Bay, Nevada. The South Demonstration Project shared-use path is located in Douglas County, Nevada on the east shore of Lake Tahoe, beginning on Lake Parkway at the Nevada/California border in the south shore casino core and ending approximately 0.3 mile north of the entrance to Round Hill Pines Beach. The proposed shared-use path would be entirely on the west side of U.S. 50 and is approximately 3.2 miles in length, of which approximately 2.2 miles is proposed to be located on NFS lands. Approximately 0.9 mile of the proposed shared-use path would extend along private parcels owned by Edgewood Companies along Lake Parkway and U.S. 50, requiring a deed-restricted easement from Edgewood Companies and encroachment permits from Douglas County and Nevada Department of Transportation (NDOT). The remainder of the path would be an on-road segment on Laura Drive, which would require an encroachment permit and/or right-of-way dedication from the Olive Park General Improvement District (GID). The shared-use path would cross two streams in the project area: Edgewood Creek and Burke Creek. The proposed shared-use path would generally include a 10-foot wide paved path with 2-foot shoulders on both sides. The segment along Lake Parkway and U.S. 50, between Lake Parkway and 4-H Camp Road, (approximately one quarter of the total path length) would include a 12-foot-wide paved path with 1-foot

shoulders on both sides. The shared-use path would be limited to non-motorized vehicle use, except by maintenance vehicles.

The approximately 3.2-mile shared-use path would be within the LTBMU Round Hill and Urban Lots management areas defined in the Forest Plan. It would cross portions of the following TRPA Plan Area Statements: 068 (Round Mound), 070A (Edgewood), 070B (Rabe), and 077 (Oliver Park), and would be contiguous to the Stateline and Kingsbury Community Plan areas. The shared-use path meets the definition of a linear public facility (LPF) in Chapter 2, "Definitions," of the TRPA Code of Ordinances, and as such, would be subject to the applicable TRPA Code provisions that apply to LPFs.

The Draft EA analyzes three alternatives for the South Demonstration Project, identified as Alternative A, Alternative B, and Alternative C (No Project/No Action Alternative). Under both action alternatives (A and B), the project would be constructed in three phases. Each phase would consist of one segment of shared-use path, approximately 1 mile in length. These segments and the affected parcels include:

- ▶ Segment 1: The California/Nevada state line on Lake Parkway to the north side of Kahle Drive. This segment includes an option to narrow the width of Lake Parkway west of U.S. 50 by 7 feet.
- ▶ Segment 2: North side of Kahle Drive to the existing shared-use path on the south side of Elks Point Road (Elks Point Bike Path).
- ▶ Segment 3: South side of Elks Point Road (Elks Point Bike Path) to Round Hill Pines Beach. This segment includes upper and lower optional alignments around the west side of Round Mound.

Segments 1 and 3, including the optional alignments, would be the same with both Alternatives A and B. Similarly, the proposed expansion and enhancement of the existing parking lot with a restroom facility at the northwest corner of the intersection of U.S. 50 and Kahle Drive and use of a portion of the Elks Point Bike Path in Segment 2 would be the same with both Alternatives A and B.

The primary difference between Alternatives A and B is the alignment of the shared-use path through Rabe Meadow, between Kahle Drive and Elks Point Road (Segment 2). The Alternative A and B alignment options in Segment 2 were determined to best meet the purpose and need and project goals and objectives and are intended to minimize effects on cultural and biological resources and stream environment zone (SEZ) areas; minimize tree removal; maximize use of existing disturbed areas; and enhance user experience.

This notice is to inform you that a public comment period for the South Demonstration Project Draft EA will commence on Thursday, **January 13, 2011** and will conclude on Monday, **February 14, 2011**. Comments will be solicited during this timeframe and will be incorporated into the final document. Written responses should be sent at the earliest possible date, as comments received after 11:59 p.m. on February 14, 2011 are not required to be considered and may not be included in the final document. Please send your written responses to Garrett Villanueva at USFS at the address shown above. Responses should include the name of a contact person at your agency or organization.

The Draft EA is available for the public to review at the USFS LTBMU, 35 College Drive, South Lake Tahoe, CA; the TRPA, 128 Market Street, Stateline, NV; and the Douglas County Library, 233 Warrior Way, Zephyr Cove, NV. In addition, the document can be found on the USFS LTBMU website (under Land & Resources Management, Projects), the TRPA website (under Major Projects and Environmental Documents), and the project website at <http://www.nvtahoebikeway.com> (under Document Library, South Demonstration Project).

Three public hearings are scheduled to solicit comments on the Draft EA. The first will be at the Douglas County Board of County Commissioners meeting on Thursday **January 20, 2011**, beginning at 1:30 p.m. at the Tahoe Transportation Center, 169 U.S. 50, Stateline, Nevada 89449. The second will be at the Tahoe Transportation District Board meeting on **January 21, 2011**, beginning at 9:30 a.m. at the Tahoe Regional Planning Agency, 128

Market Street, Stateline, NV 89449. The third will be before the TRPA Public Hearings Officer on **February 3, 2011**, beginning at 2:00 p.m. at the Tahoe Regional Planning Agency, 128 Market Street, Stateline, NV 89449. Please note that no specific agenda time has been set for this item at these meetings. Please refer to the agenda posted at <http://cltr.co.douglas.nv.us/agendas.asp>, <http://www.tahoetransportation.org/board.html>, and <http://www.trpa.org/default.aspx?tabindex=1&tabid=239> one week prior to each of the meetings for updated information.

If you have any questions, please contact Garrett Villanueva at USFS or Jeanne McNamara at TRPA (contact information is provided above).