

SINNOTT CONSULTING

Certified Arborist

**Post Office Box 3293
Carson City, Nevada 89702
(775) 884-1883 office / 882-4921 fax
sincon@sbcglobal.net**

October 17, 2007

Boulder Bay
22 Highway 28, Suite 201
Crystal Bay, NV 89402

Re. Boulder Bay, Crystal Bay, NV

Dear Mr. Muller / Mr. GilanFarr:

Upon your request, an arborist evaluation was performed of the proposed Boulder Bay Project, Crystal Bay, Nevada. Enclosed are the following:

1. Evaluations and recommendations summary report with photos of the visual evaluation.
2. Detailed tree list that includes:
 - Total number of trees evaluated: 368.
 - Recommended for removal: 107.
 - Stumps: old or recently removed for utility line clearance: 7.
 - On the plan but not on the site: 2.
 - Less than 6 inch diameter: 1.
 - All trees have been numbered according to the site plan.
 - Trees identified in the field that were not on the plan have been given a number & added to the list.
 - Each tree is identified by species and size, has a health condition and a recommendation.
3. Detailed tree lists per A.P.N.
4. Site plans with trees added that were not identified on the plan. These trees are noted in red. Their locations are estimated.

If you have any questions concerning this report or if I can be of further assistance, please do not hesitate to call.

Molly Sinnott
Certified Arborist
WE-0369

SINNOTT CONSULTING

Certified Arborist

**Post Office Box 3293
Carson City, Nevada 89702
(775) 884-1883 office / 882-4921 fax
sincon@sbcglobal.net**

BOULDER BAY PROJECT

TREE EVALUATIONS & RECOMMENDATIONS

SUMMARY

Prepared by Molly Sinnott

Certified Arborist

WE-0369

October 17, 2007

1. There are a few old, large trees on these parcels, trees with reduced vigor and increased susceptibility to insects, disease and stress. When development occurs in the vicinity of old and large diameter trees, they often have little tolerance for root disturbance.
2. Trees in the vicinity of developed areas have had dead wood maintenance pruning. The majority of trees in the undeveloped and outlying areas are in need of dead wood pruning. This involves the removal of lower dead branches in the trees.
3. Numerous trees have been topped and/or excessively pruned to allow for utility line clearance. Many of these are recommended for removal.



Tree topped & pruned of utility
line clearance.

4. A few trees are recommended for removal due to old wounds, decay, strong leans or other defects.



Basal wound on pine.



Basal wound painted on pine.



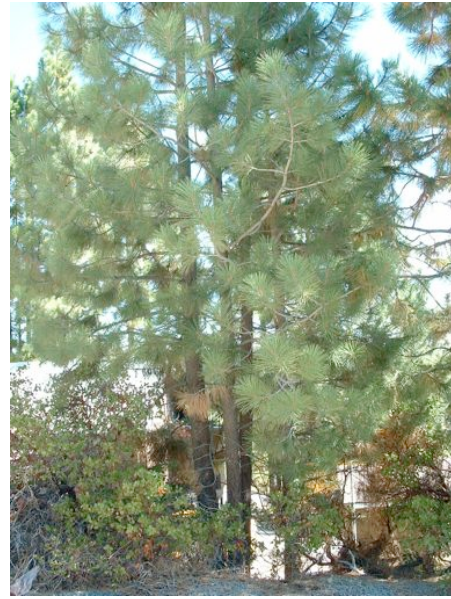
Lightning strike wound.



Cedar with extensive trunk wound.

5. A burl has developed on one of the large pine trees (A14). This is a large swelling on the main stem but is not considered a defect.

6. A few areas of overstocked trees are competing for water, nutrients and growing space. The trees recommended for thinning (removal) in these locations are undersized and suppressed with larger, more desirable trees adjacent to them. Trees less than six inch diameter can be removed without a permit.



Thinning needed to reduce competition.



Thin suppressed tree to right.

7. There were ten trees found in the field that had not been noted on the plan. They were measured and numbered in the field, their location estimated and noted on the map. Trees measured by Sinnott Consulting were measured using d.b.h (diameter breast height), 4.5 feet above ground.

8. It appears that numerous trees are missing at the south end of sheet 5, Sierra Park.
9. Twenty three trees were incorrectly identified as a pine, fir or alder on the plan, the list or both.
10. A few trees have developed a codominant (double) or multiple main stem near the base or a codominant leader near the top. These are trees that need to be monitored for failure at the seam where the stems meet. This can be a point of weak attachment with included (embedded or inward turning) bark, cracking, splitting or decay occurring. These trees need to be monitored or can be evaluated by a tree service for cabling need.



Multiple leader tree.

11. Sapsucker bird injury was evident on six trees. It appears as elliptical holes in the bark either in a horizontal or vertical line. Normally they are superficial wounds and not detrimental to these thicker barked trees.



Horizontal rows of elliptical holes in bark indicate sapsucker bird injury.

12. Numerous trees have utilities (wires, lights, nails, signs, etc.) attached or embedded in bark. Some of the utilities are functional, others are not. Anything that is abandoned should be cut and removed, leave any part that is embedded in the bark. Do not carve into the bark and create wounds trying to remove utilities. It is not recommended to use tree trunks as utility poles. Two trees had chain link fencing embedded in them.



Chain link fence embedded in tree trunk.



Light fixture embedded in tree.

13. A few trees were found to either abut or embed a roof overhang, wall or foundation.



Pine abutting stone wall, lifting asphalt.



Pine embedded in overhang.

Boulder Bay Project

Detailed Tree List

Tree #	Size	Genus	Species	Common Name	Condition	Recommendation	Additional Comments
A1	6	Picea	pungens	Colorado Spruce	Fair. Stressed.	Retain.	Incorrectly noted as 16 inch pine.
A2	13	Pinus	jeffreyi	Jeffrey Pine	Good.	Retain.	
A3	6	Pinus	jeffreyi	Jeffrey Pine	Poor.	Remove.	
A4	23	Pinus	jeffreyi	Jeffrey Pine	Fair.	Remove.	Topped for utility line clearance, 1/2 tree remaining.
A5	21	Pinus	jeffreyi	Jeffrey Pine	Fair.	Remove.	Topped for utility line clearance, 1/2 tree remaining.
A6	17	Pinus	jeffreyi	Jeffrey Pine	Fair.	Remove.	Topped for utility line clearance, 1/2 tree remaining.
A7	18	Pinus	jeffreyi	Jeffrey Pine	Fair.	Remove.	Topped for utility line clearance, 1/2 tree remaining.
A8	17	Pinus	jeffreyi	Jeffrey Pine	Fair.	Remove.	Topped for utility line clearance, 1/2 tree remaining.
A9	26/12	Pinus	jeffreyi	Jeffrey Pine	Fair.	Remove.	Topped for utility line clearance, 1/2 tree remaining. 12 inch tree not on list.
A10	20	Pinus	jeffreyi	Jeffrey Pine	Good. Single base, triple stem.	Retain.	
A11	20	Pinus	jeffreyi	Jeffrey Pine		Retain.	
A12	16	Pinus	jeffreyi	Jeffrey Pine		Retain.	
A13	9	Pinus	jeffreyi	Jeffrey Pine	Good.	Retain. Prune broken branch.	
A14	30	Pinus	jeffreyi	Jeffrey Pine	Good. Multiple leaders.	Retain.	Burl growth.
A15	32	Pinus	jeffreyi	Jeffrey Pine	Good.	Retain.	
A16	27	Pinus	jeffreyi	Jeffrey Pine	Good.	Retain.	Lean in upper 2/3 that rights itself.
A17	36	Pinus	jeffreyi	Jeffrey Pine	Good.	Retain.	
A18	26	Pinus	jeffreyi	Jeffrey Pine	Good.	Retain.	
A19	20	Pinus	jeffreyi	Jeffrey Pine	Fair. Suppressed top, no main leader, branches only on west side.	Remove.	Soil fill at base, limbs on roof, minimal foliage after roof clearance pruning.
A20	38	Pinus	jeffreyi	Jeffrey Pine	Good.	Retain. Remove utility line.	Connected at base to trees A22 and A23.
A21	23	Pinus	jeffreyi	Jeffrey Pine	Good.	Remove.	Trunk grown into roof overhang.

Tree #	Size	Genus	Species	Common Name	Condition	Recommendation	Additional Comments
A22	18	Pinus	jeffreyi	Jeffrey Pine	Fair. Concrete sidewalk against base.	Retain.	Connected at base to trees A20 and A23.
A23	33	Pinus	jeffreyi	Jeffrey Pine	Good. Concrete sidewalk against base.	Retain.	Connected at base to trees A20 and A22.
A24	6	Picea	pungens	Colorado Spruce	Poor. Trunk wounds on west side.	Remove.	Incorrectly noted as pine.
A25	7	Picea	pungens	Colorado Spruce	Fair. Stressed, small trunk wound on southwest side.	Retain.	Incorrectly noted as pine.
A26	7	Picea	pungens	Colorado Spruce	Fair.	Retain.	Incorrectly noted as pine.
A27	9	Picea	pungens	Colorado Spruce	Fair. Small trunk wounds from broken branches.	Retain.	Incorrectly noted as pine.
A28	28	Pinus	jeffreyi	Jeffrey Pine	Good.	Retain. Remove utilities.	
A29	29	Pinus	jeffreyi	Jeffrey Pine	Good.	Retain.	Basal roots exposed.
A30	38	Pinus	jeffreyi	Jeffrey Pine	Good.	Retain.	
A31	23	Pinus	jeffreyi	Jeffrey Pine	Good.	Retain.	
A32	30	Pinus	jeffreyi	Jeffrey Pine	Good.	Retain. Remove light fixture.	
A33	26	Pinus	jeffreyi	Jeffrey Pine	Good. Small, old basal wound.	Retain.	
A34	22	Pinus	jeffreyi	Jeffrey Pine	Good.	Retain. Remove utilities.	
A35	24	Pinus	jeffreyi	Jeffrey Pine	Good.	Retain.	
A36	23	Pinus	jeffreyi	Jeffrey Pine	Good.	Retain.	
A37	48	Pinus	jeffreyi	Jeffrey Pine	Poor. Base constricted, narrower than trunk.	Remove. Remove utilities.	Severe sapsucker injury. Old lightning strike.
A38	6	Picea	pungens	Colorado Spruce	Fair. Stressed.	Retain. Fix irrigation. Remove double leader stump.	Incorrectly noted as pine.
A39	6	Picea	pungens	Colorado Spruce	Fair. Stressed.	Retain. Fix irrigation.	Incorrectly noted as pine.
A40	6	Picea	pungens	Colorado Spruce	Fair. Stressed. Trunk wound on south side.	Retain. Fix irrigation.	Incorrectly noted as pine.

Tree #	Size	Genus	Species	Common Name	Condition	Recommendation	Additional Comments
A41	6	Picea	pungens	Colorado Spruce	Poor.	Remove.	Incorrectly noted as pine.
A42	32	Pinus	jeffreyi	Jeffrey Pine	Good.	Retain.	
A43	31	Pinus	jeffreyi	Jeffrey Pine	Fair. Large basal wound on south side filled with foam, covered with paint.	Remove. Remove utilities.	
A44	25	Pinus	jeffreyi	Jeffrey Pine	Fair. Large basal wound on south side.	Remove.	
A45	22	Pinus	jeffreyi	Jeffrey Pine	Good.	Retain.	
A46	38	Pinus	jeffreyi	Jeffrey Pine	Good.	Retain. Remove utilities.	Not numbered on plan.
A47	6	Picea	pungens	Colorado Spruce	Poor. Stressed. Large trunk wound on west side.	Remove.	Not numbered & measured on plan. Measured & numbered in field & noted on map.
A48	8	Picea	pungens	Colorado Spruce	Good. Small trunk wound on south side.	Retain.	Not numbered or measured on plan. Measured & numbered in field & noted on map.
B1	36	Pinus	ponderosa	Ponderosa Pine	Good.	Remove nail & light fixture.	
B2	9	Pinus	jeffreyi	Jeffrey Pine	Good.	Retain.	
B3	8	Pinus	jeffreyi	Jeffrey Pine	Good.	Retain.	
B4	8	Pinus	jeffreyi	Jeffrey Pine	Good.	Retain. Remove broken stake stubs.	
B5	9	Pinus	jeffreyi	Jeffrey Pine	Good.	Retain.	Sequoia pitch moth damage.
C1	18	Pinus	jeffreyi	Jeffrey Pine	Good.	Remove.	Pruned for utility line clearance.
C2	6	Pinus	jeffreyi	Jeffrey Pine	Fair. Suppressed.	Remove.	
C3	14	Pinus	jeffreyi	Jeffrey Pine	Fair. Suppressed. Severe deformities at base from something previously embedded. Lower 2 feet of trunk sunken inward.	Remove.	
C4	14	Pinus	jeffreyi	Jeffrey Pine	Fair. Suppressed. Leaning.	Remove.	
C5	16	Pinus	jeffreyi	Jeffrey Pine	Fair. Suppressed. Leaning.	Remove.	
C6	23	Pinus	jeffreyi	Jeffrey Pine	Good.	Retain.	

Tree #	Size	Genus	Species	Common Name	Condition	Recommendation	Additional Comments
C7	10	Pinus	jeffreyi	Jeffrey Pine	Fair. Severe basal wound on east side.	Remove.	
C8	7	Pinus	jeffreyi	Jeffrey Pine	Good. Suppressed.	Remove. Thin.	
C9	11	Pinus	jeffreyi	Jeffrey Pine	Good.	Retain.	Thin adjacent 2 inch pine.
C10	10	Pinus	jeffreyi	Jeffrey Pine	Good.	Retain. Thin.	Thin adjacent 2 inch pine.
C11	7	Pinus	jeffreyi	Jeffrey Pine	Good.	Retain.	Thin adjacent 2 inch pine.
C12	11	Pinus	jeffreyi	Jeffrey Pine	Good. Suppressed.	Remove. Thin.	
C13	12	Pinus	jeffreyi	Jeffrey Pine	Good.	Retain.	
C14	15	Pinus	jeffreyi	Jeffrey Pine	Good.	Retain.	Thin adjacent 1 inch pine.
C15	20	Pinus	jeffreyi	Jeffrey Pine	Fair.	Remove.	Chain link fence embedded in lower trunk & branches on southwest side.
C16	10	Pinus	jeffreyi	Jeffrey Pine	Good.	Remove. Thin.	
C17	11	Pinus	jeffreyi	Jeffrey Pine	Good.	Retain.	
C18	8	Pinus	jeffreyi	Jeffrey Pine	Good.	Retain.	
C19	6	Pinus	jeffreyi	Jeffrey Pine	Good. Suppressed.	Remove. Thin.	
C20	11	Pinus	jeffreyi	Jeffrey Pine	Good.	Retain.	
C21	10	Picea	pungens	Colorado Spruce	Fair.	Remove. Thin.	Incorrectly noted as Fir on plan & Pine on list. Poor trunk & branching structure.
C22	13	Pinus	jeffreyi	Jeffrey Pine	Good.	Retain. Remove codominant leader on north side.	Incorrectly noted with 8 inch tree. Stone wall on west side does not appear embedded.
C23	8	Pinus	jeffreyi	Jeffrey Pine	N/A	N/A	Not on site.
C24	6	Pinus	jeffreyi	Jeffrey Pine	Good.	Retain.	
C25	6	Pinus	jeffreyi	Jeffrey Pine	Fair. Suppressed. Basal wound on northeast & east side.	Remove. Thin.	
C25A	15	Pinus	jeffreyi	Jeffrey Pine	Good.	Retain.	Not numbered on plan. Numbered in field & noted on map.
C26	13	Pinus	jeffreyi	Jeffrey Pine	Good.	Retain.	
C27	6	Pinus	jeffreyi	Jeffrey Pine	Good. Small old trunk wound on north side.	Retain.	Thin adjacent 1 & 3 inch pines.
C28	6	Pinus	jeffreyi	Jeffrey Pine	Good.	Retain.	

Tree #	Size	Genus	Species	Common Name	Condition	Recommendation	Additional Comments
						Retain. Relocate utilities to power pole. Cut abandoned utilities off trunk.	
C29	38	Pinus	ponderosa	Ponderosa Pine	Good.		
C30	14	Pinus	jeffreyi	Jeffrey Pine	Good.	Retain.	
					Good.	Remove.	
C31	13	Pinus	jeffreyi	Jeffrey Pine	Suppressed.	Thin.	
						Remove.	
C32	9	Pinus	jeffreyi	Jeffrey Pine	Good.	Thin.	
C33	10	Pinus	jeffreyi	Jeffrey Pine	Good.	Retain.	
C34	11	Pinus	jeffreyi	Jeffrey Pine	Good.	Retain.	
					Poor. Suppressed. No top. Poor structure.	Remove. Thin.	
C35	11	Pinus	ponderosa	Ponderosa Pine			
C36	11	Pinus	jeffreyi	Jeffrey Pine	Good.	Retain.	
C37	12	Pinus	jeffreyi	Jeffrey Pine	Good.	Retain.	
C38	9	Pinus	jeffreyi	Jeffrey Pine	Good.	Retain.	
C39	9	Pinus	jeffreyi	Jeffrey Pine	Good.	Retain.	
					Good. Suppressed.	Remove. Thin.	
C40	10	Pinus	jeffreyi	Jeffrey Pine			
C41	6	Pinus	jeffreyi	Jeffrey Pine	N/A	N/A	Not on site.
C42	6	Pinus	jeffreyi	Jeffrey Pine	Good.	Retain.	
C43	10	Pinus	jeffreyi	Jeffrey Pine	Good.	Retain.	Remove adjacent 2 inch pine.
					Fair. Suppressed.	Retain.	
C44	13	Pinus	jeffreyi	Jeffrey Pine			
C45	18	Pinus	jeffreyi	Jeffrey Pine	Good.	Retain.	Pruned for utility line clearance.
					Poor. Top third of tree is dead.	Remove.	
C46	13	Abies	concolor	White Fir			
						Retain.	
C47	6	Pinus	jeffreyi	Jeffrey Pine	Good.	Remove fill soil at base.	
						Retain.	
C48	8	Pinus	jeffreyi	Jeffrey Pine	Good.	Remove fill soil at base.	
					Poor. Severe trunk wounds on north side.	Remove.	
C49	6	Pinus	jeffreyi	Jeffrey Pine			
C50	12	Pinus	jeffreyi	Jeffrey Pine	Good.	Retain.	
						Remove.	
C51	10	Pinus	jeffreyi	Jeffrey Pine	Good.	Thin.	
						Retain.	
C52	8	Pinus	jeffreyi	Jeffrey Pine	Good.	Remove fill soil at base.	
C53	17	Pinus	jeffreyi	Jeffrey Pine	Good.	Retain.	

Tree #	Size	Genus	Species	Common Name	Condition	Recommendation	Additional Comments
C54	6	Pinus	jeffreyi	Jeffrey Pine	Good.	Retain.	Remove two adjacent 4 inch pines.
C55	22	Pinus	jeffreyi	Jeffrey Pine	Good.	Retain.	
C56	22	Pinus	jeffreyi	Jeffrey Pine	Good.	Retain.	
C57	7	Pinus	jeffreyi	Jeffrey Pine	Good.	Retain.	Remove adjacent 1 & 2 inch pines.
C58	13	Pinus	jeffreyi	Jeffrey Pine	Good.	Retain.	Remove adjacent 1 inch pine.
C59	7	Pinus	jeffreyi	Jeffrey Pine	Good.	Retain.	
C60	8	Pinus	jeffreyi	Jeffrey Pine	Good.	Retain.	
C61	19	Abies	concolor	White Fir	Good.	Retain.	Strong lean but corrected. Providing slope stabilization. Remove if build below.
C62	12	Abies	concolor	White Fir	Good.	Retain.	
C63	18	Abies	concolor	White Fir	Fair. Dead top. Internal disease.	Remove.	
C64	21	Abies	concolor	White Fir	Fair. Dead top.	Remove.	Rock embedded in base on southwest side.
C65	29	Pinus	jeffreyi	Jeffrey Pine	Good.	Retain.	
C66	6	Pinus	jeffreyi	Jeffrey Pine	Good.	Retain.	
C67	15	Pinus	jeffreyi	Jeffrey Pine	Good.	Retain.	
C68	10	Pinus	jeffreyi	Jeffrey Pine	Good.	Retain.	
C69	12	Pinus	jeffreyi	Jeffrey Pine	Good.	Retain.	
C70	11	Pinus	jeffreyi	Jeffrey Pine	Good.	Retain.	
C71	10	Pinus	jeffreyi	Jeffrey Pine	Good.	Retain.	
C72	28	Pinus	jeffreyi	Jeffrey Pine	Good.	Retain.	
C73	16	Pinus	jeffreyi	Jeffrey Pine	Good.	Retain.	
C74	12	Pinus	jeffreyi	Jeffrey Pine	Fair. Old trunk & basal wounds on west side.	Remove.	
C75	8	Pinus	jeffreyi	Jeffrey Pine	Poor. Suppressed. No top. Poor structure.	Remove. Thin.	
C76	27	Pinus	jeffreyi	Jeffrey Pine	Good.	Retain.	
C77	12	Abies	concolor	White Fir	Fair.	Retain. Prune limb stub off southeast side.	
C78	19	Pinus	jeffreyi	Jeffrey Pine	Fair. Thin crown.	Retain.	Providing slope stabilization. Remove if build below.
D1	19	Pinus	jeffreyi	Jeffrey Pine	Fair.	Remove.	Topped & excessively pruned for utility line clearance.
D2	40	Pinus	ponderosa	Ponderosa Pine	Good. Old trunk wound on west side.	Retain.	Pruned for utility line clearance.

Tree #	Size	Genus	Species	Common Name	Condition	Recommendation	Additional Comments
D3	28	Pinus	ponderosa	Ponderosa Pine	Good. Old basal wound on west side.	Retain. Remove nails.	
D4	23	Pinus	ponderosa	Ponderosa Pine	Good.	Retain. Remove nail.	Steel pipe embedded at base between this & tree D3. Sapsucker bird injury.
D5	11	Pinus	ponderosa	Ponderosa Pine	Fair. Suppressed. Old basal wound on west side. Poor structure, no top.	Remove. Thin.	
D6	12	Pinus	ponderosa	Ponderosa Pine	Fair. Suppressed. Leaning.	Remove. Thin.	Sapsucker bird injury.
D7	24	Pinus	ponderosa	Ponderosa Pine	Good.	Retain.	Pruned for utility line clearance.
D8	15	Pinus	ponderosa	Ponderosa Pine	Fair. Suppressed. No top.	Remove. Thin.	
D9	21	Pinus	jeffreyi	Jeffrey Pine	Fair.	Remove.	Topped & pruned for utility line clearance.
D10	13	Pinus	jeffreyi	Jeffrey Pine	Fair.	Remove.	Topped & pruned for utility line clearance.
D11	20	Pinus	jeffreyi	Jeffrey Pine	Good.	Retain.	
D12	26	Pinus	jeffreyi	Jeffrey Pine	Good. Old trunk wound on south side.	Retain.	
D13	16	Pinus	jeffreyi	Jeffrey Pine	Good.	Retain.	
D14	15	Abies	concolor	White Fir	Good.	Retain.	
D15	14	Pinus	jeffreyi	Jeffrey Pine	Good.	Retain.	
D16	19	Pinus	jeffreyi	Jeffrey Pine	Good.	Retain.	
D17	15	Pinus	jeffreyi	Jeffrey Pine	Good.	Retain.	
D18	14	Pinus	jeffreyi	Jeffrey Pine	Fair. Severe trunk wound on west side.	Remove. Thin.	
D19	17	Pinus	jeffreyi	Jeffrey Pine	Good.	Retain.	
D20	20	Pinus	jeffreyi	Jeffrey Pine	Good.	Retain.	
D21	19	Pinus	jeffreyi	Jeffrey Pine	Good.	Retain.	
D22	10	Abies	concolor	White Fir	Fair. Suppressed.	Remove. Thin.	Incorrectly noted as Pine.
D23	14	Pinus	jeffreyi	Jeffrey Pine	Good.	Retain.	
D24	12	Pinus	jeffreyi	Jeffrey Pine	Good.	Retain.	
D25	11	Pinus	jeffreyi	Jeffrey Pine	Good.	Retain.	
D26	16	Pinus	jeffreyi	Jeffrey Pine	Good.	Retain.	
D27	25	Pinus	ponderosa	Ponderosa Pine	Good.	Retain. Remove metal in trunk.	

Tree #	Size	Genus	Species	Common Name	Condition	Recommendation	Additional Comments
D28	26	Pinus	ponderosa	Ponderosa Pine	Good.	Retain.	
D29	31	Pinus	jeffreyi	Jeffrey Pine	Good.	Retain. Remove abandoned utility line. Relocate current utility line from trunk & place back on adjacent power pole.	
D30	8	Pinus	jeffreyi	Jeffrey Pine	Good. Circling root.	Retain.	
D31	9	Pinus	jeffreyi	Jeffrey Pine	Good.	Retain.	
D32	13	Pinus	jeffreyi	Jeffrey Pine	Good.	Retain.	
D33	8	Pinus	jeffreyi	Jeffrey Pine	Fair. Suppressed.	Remove. Thin.	
D34	14	Pinus	jeffreyi	Jeffrey Pine	Good.	Retain.	
D35	22	Pinus	jeffreyi	Jeffrey Pine	Good.	Retain.	
D36	12	Pinus	jeffreyi	Jeffrey Pine	Good.	Retain.	
D37	19	Pinus	jeffreyi	Jeffrey Pine	Good.	Retain.	
D38	13	Abies	concolor	White Fir	Good.	Retain.	
D39	19	Abies	concolor	White Fir	Good.	Retain.	
D40	14	Abies	concolor	White Fir	Fair. Double leader.	Retain.	
D41	13	Pinus	jeffreyi	Jeffrey Pine	Fair. Suppressed.	Retain.	All three trees grown together at base.
D42	22	Pinus	jeffreyi	Jeffrey Pine	Good.	Retain.	
D43	20	Pinus	jeffreyi	Jeffrey Pine	Good.	Retain.	
D44	22	Cedrus	atlantica	Atlas Cedar	Good.	Retain.	Incorrectly noted as Pine on map & Fir on list.
E1	12	Pinus	jeffreyi	Jeffrey Pine	Good. Girdling root on east side.	Remove. Thin.	
E2	22	Pinus	jeffreyi	Jeffrey Pine	Good. Small basal wound on north side. Some root exposure.	Retain.	
E3	9	Pinus	jeffreyi	Jeffrey Pine	Good.	Retain.	
E4	7	Pinus	jeffreyi	Jeffrey Pine	Good. Suppressed.	Remove. Thin.	
E4A	7	Pinus	jeffreyi	Jeffrey Pine	Good. Suppressed.	Remove. Thin.	Not on plan. Measured & numbered in field, location estimated & noted on map.
E4B	7	Pinus	jeffreyi	Jeffrey Pine	Good. Suppressed.	Remove. Thin.	Not on plan. Measured & numbered in field, location estimated & noted on map.

Tree #	Size	Genus	Species	Common Name	Condition	Recommendation	Additional Comments
E5	18	Pinus	jeffreyi	Jeffrey Pine	Good.	Retain.	
E6	10	Pinus	jeffreyi	Jeffrey Pine	Stump.	N/A	Recently removed, assuming utility line clearance.
E7	15	Pinus	jeffreyi	Jeffrey Pine	Stump.	N/A	Recently removed, assuming utility line clearance.
E8	8	Pinus	jeffreyi	Jeffrey Pine	Stump.	N/A	Recently removed, assuming utility line clearance.
E9	15	Pinus	jeffreyi	Jeffrey Pine	Good.	Retain.	
E10	6	Pinus	jeffreyi	Jeffrey Pine	Good.	Retain.	
E11	10	Pinus	jeffreyi	Jeffrey Pine	Good.	Retain.	
E12	16	Pinus	jeffreyi	Jeffrey Pine	Good.	Retain.	
E13	14	Pinus	jeffreyi	Jeffrey Pine	Good. Codominant branches.	Remove.	Chain link fencing embedded in lower trunk.
E14	8	Pinus	jeffreyi	Jeffrey Pine	Fair.	Remove.	Trunk grown into roof overhang.
E15	12	Pinus	jeffreyi	Jeffrey Pine	Fair.	Remove.	Trunk grown into roof overhang.
E16	14	Pinus	jeffreyi	Jeffrey Pine	Good. Suppressed.	Remove. Thin.	
E17	10	Pinus	jeffreyi	Jeffrey Pine	Good. Crowded, suppressed.	Remove. Thin.	Trunk grown into roof overhang.
E18	6	Pinus	jeffreyi	Jeffrey Pine	Fair.	Remove.	Trunk grown into roof overhang.
E19	8	Pinus	jeffreyi	Jeffrey Pine	Good.	Retain.	
E20	15	Pinus	jeffreyi	Jeffrey Pine	Good.	Retain.	
E21	10	Pinus	jeffreyi	Jeffrey Pine	Good.	Remove. Thin.	
E22	12	Pinus	jeffreyi	Jeffrey Pine	Good.	Retain.	
E23	12	Pinus	jeffreyi	Jeffrey Pine	Good. Suppressed, limbs only on east side.	Remove. Thin.	
E24	20	Pinus	jeffreyi	Jeffrey Pine	Good.	Retain.	
E25	14	Pinus	jeffreyi	Jeffrey Pine	Good.	Remove. Thin.	
E26	21	Pinus	jeffreyi	Jeffrey Pine	Good.	Retain.	
E27	16	Pinus	jeffreyi	Jeffrey Pine	Good.	Retain.	
E28	8	Pinus	jeffreyi	Jeffrey Pine	Fair. Suppressed.	Remove.	
E29	6	Pinus	jeffreyi	Jeffrey Pine	Fair. Suppressed.	Remove. Thin.	
E30	26	Pinus	jeffreyi	Jeffrey Pine	Good.	Retain.	
E31	12	Abies	concolor	White Fir	Good.	Retain.	
F1	40	Pinus	jeffreyi	Jeffrey Pine	Good.	Retain.	Cut & abandon light fixture & electrical embedded.
F2	33	Pinus	jeffreyi	Jeffrey Pine	Good.	Retain.	Cut & abandon light fixture.

Tree #	Size	Genus	Species	Common Name	Condition	Recommendation	Additional Comments
F3	20	Pinus	jeffreyi	Jeffrey Pine	Good.	Retain.	
F4	13	Pinus	ponderosa	Ponderosa Pine	Fair. Old trunk wound on east side.	Remove.	Branches stubbed for utility line clearance.
F5	16	Pinus	ponderosa	Ponderosa Pine	Good. Old trunk wound on north side.	Remove. Thin.	Pruned for utility line clearance.
F6	20	Pinus	ponderosa	Ponderosa Pine	Good.	Retain.	
F7	18	Pinus	ponderosa	Ponderosa Pine	Good. Suppressed, no limbs on east side. Deformed top.	Remove. Thin.	
F8	16	Pinus	jeffreyi	Jeffrey Pine	Stump.	N/A	Recently removed, assuming utility line clearance.
F9	14	Pinus	jeffreyi	Jeffrey Pine	Stump.	N/A	Recently removed, assuming utility line clearance.
F10	20	Pinus	jeffreyi	Jeffrey Pine	Stump.	N/A	Recently removed, assuming utility line clearance.
F11	14	Pinus	jeffreyi	Jeffrey Pine	Stump.	N/A	Recently removed, assuming utility line clearance.
F12	16	Pinus	jeffreyi	Jeffrey Pine	Good.	Retain.	Pruned for utility line clearance.
F13	12	Pinus	jeffreyi	Jeffrey Pine	Good. Suppressed.	Remove.	
F14	8	Pinus	jeffreyi	Jeffrey Pine	Fair. Suppressed.	Remove.	
F15	14	Pinus	jeffreyi	Jeffrey Pine	Good.	Retain.	
F16	18	Pinus	jeffreyi	Jeffrey Pine	Good. Suppressed.	Remove.	
F17	18	Pinus	jeffreyi	Jeffrey Pine	Good.	Retain.	
F17A	15	Pinus	jeffreyi	Jeffrey Pine	Good.	Retain.	Not on plan. Measured & numbered in field, location estimated & noted on map.
F18	14	Pinus	jeffreyi	Jeffrey Pine	Good.	Retain.	
F19	14	Pinus	jeffreyi	Jeffrey Pine	Good.	Retain.	
F20	10	Pinus	jeffreyi	Jeffrey Pine	Fair. Suppressed.	Remove.	Connected at base to F21.
F21	12	Pinus	jeffreyi	Jeffrey Pine	Good.	Retain. Prune limbs for roof clearance.	Connected at base to F20. Incorrectly noted as 23 inch.
F22	16	Pinus	jeffreyi	Jeffrey Pine	Fair. Suppressed.	Remove. Thin.	

Tree #	Size	Genus	Species	Common Name	Condition	Recommendation	Additional Comments
F23	20	Pinus	jeffreyi	Jeffrey Pine	Good. Small circling root.	Retain. Prune limbs for roof clearance.	
F24	18	Pinus	jeffreyi	Jeffrey Pine	Good.	Retain. Prune limbs for roof clearance.	
F25	12	Pinus	jeffreyi	Jeffrey Pine	Fair. Suppressed, slight lean.	Remove.	
F26	14	Pinus	jeffreyi	Jeffrey Pine	Good.	Retain. Prune for roof clearance.	
F27	18	Pinus	jeffreyi	Jeffrey Pine	Good.	Retain. Prune for roof clearance.	
F28	14	Pinus	jeffreyi	Jeffrey Pine	Fair.	Remove.	Trunk grown into roof overhang.
F29	13	Pinus	jeffreyi	Jeffrey Pine	Good.	Remove. Thin.	
F30	24	Pinus	jeffreyi	Jeffrey Pine	Good.	Retain.	
G1	26	Pinus	jeffreyi	Jeffrey Pine	Good.	Retain.	
G2	8	Abies	concolor	White Fir	Fair. Large trunk wound on west side.	Remove.	Incorrectly noted as Pine on list.
G3	12	Abies	concolor	White Fir	Good. Trunk wound on west side.	Retain.	Incorrectly noted as Pine on list.
G4	18	Pinus	jeffreyi	Jeffrey Pine	Good.	Retain.	
G5	12	Pinus	jeffreyi	Jeffrey Pine	Good.	Retain.	
G6	12	Pinus	jeffreyi	Jeffrey Pine	Good.	Retain.	
G7	12	Pinus	jeffreyi	Jeffrey Pine	Good.	Retain.	
G8	12	Pinus	jeffreyi	Jeffrey Pine	Good.	Retain.	
G9	12	Pinus	jeffreyi	Jeffrey Pine	Good.	Retain.	
G10	7	Pinus	jeffreyi	Jeffrey Pine	Good. Suppressed.	Remove.	Incorrectly noted as 12 inch.
G11	16	Pinus	jeffreyi	Jeffrey Pine	Good.	Retain.	
G12	10	Pinus	jeffreyi	Jeffrey Pine	Good.	Retain.	
G13	8	Pinus	jeffreyi	Jeffrey Pine	Good.	Retain.	
G14	46	Pinus	ponderosa	Ponderosa Pine	Good.	Retain.	
G15	8	Pinus	jeffreyi	Jeffrey Pine	Good.	Retain.	
G16	8	Pinus	jeffreyi	Jeffrey Pine	Good.	Retain.	
G17	18	Abies	concolor	White Fir	Fair. New top attached to decaying main stem.	Remove.	
G18	8	Pinus	ponderosa	Ponderosa Pine	Good.	Retain.	
G19	12	Pinus	ponderosa	Ponderosa Pine	Good.	Retain.	

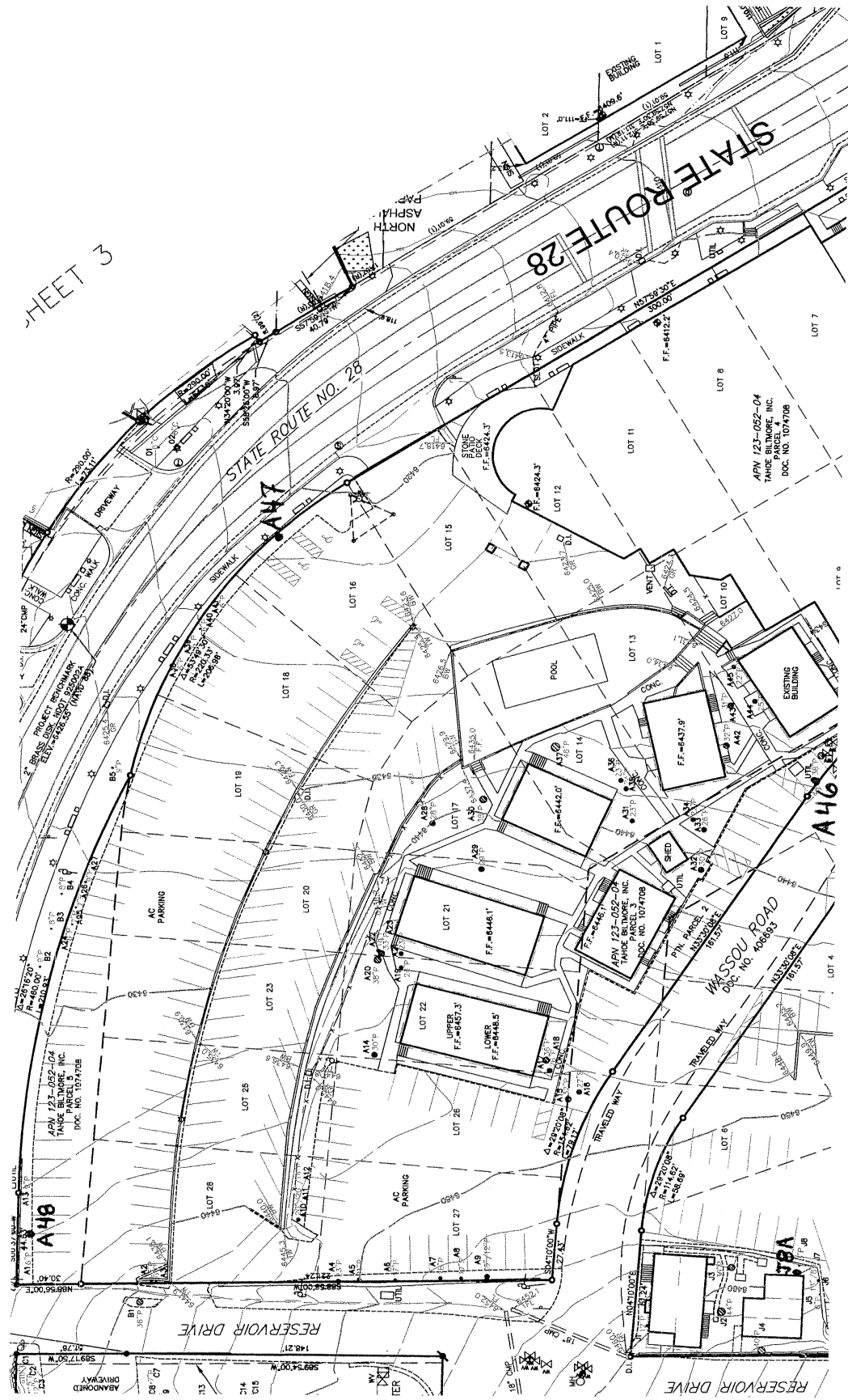
Tree #	Size	Genus	Species	Common Name	Condition	Recommendation	Additional Comments
G20	18	Pinus	ponderosa	Ponderosa Pine	Good.	Retain.	
G21	32	Pinus	ponderosa	Ponderosa Pine	Good.	Retain.	
G22	10	Pinus	jeffreyi	Jeffrey Pine	Good.	Retain.	
G23	10	Pinus	jeffreyi	Jeffrey Pine	Good.	Retain.	
G24	30	Pinus	jeffreyi	Jeffrey Pine	Good.	Retain.	
G25	14	Pinus	jeffreyi	Jeffrey Pine	Fair. No top, suppressed.	Remove. Thin.	
G26	16	Pinus	jeffreyi	Jeffrey Pine	Fair. No top, suppressed. Limbs only on east side.	Remove. Thin.	
G27	8	Pinus	jeffreyi	Jeffrey Pine	Good.	Retain.	Incorrectly noted as 18 inch on plan.
G28	20	Pinus	ponderosa	Ponderosa Pine	Good.	Retain.	
G29	28	Pinus	jeffreyi	Jeffrey Pine	Good.	Retain.	
G30	14	Pinus	jeffreyi	Jeffrey Pine	Good.	Retain.	Pitch moth damage.
G31	12	Pinus	jeffreyi	Jeffrey Pine	Fair. No top. Trunk wound on north & west sides.	Remove.	
G32	14	Pinus	jeffreyi	Jeffrey Pine	Good.	Retain.	
G33	10	Pinus	jeffreyi	Jeffrey Pine	Good.	Retain.	
G34	12	Pinus	jeffreyi	Jeffrey Pine	Good.	Retain.	
G35	8	Pinus	jeffreyi	Jeffrey Pine	Good.	Retain.	
G36	11	Pinus	jeffreyi	Jeffrey Pine	Good.	Retain.	Not on plan. Measured & numbered in field, location estimated & noted on map. Porcupine damage on upper third of trunk.
H1	21	Pinus	ponderosa	Ponderosa Pine	Fair. Double leader with one broken & decaying. Extensive number of large trunk wounds on west side. Sunken trunk at wound.	Remove.	Lean in direction of wound. Bird nesting hole.
H2	14	Pinus	jeffreyi	Jeffrey Pine	Good.	Retain.	
H3	8	Pinus	jeffreyi	Jeffrey Pine	Good.	Retain.	
H4	25	Pinus	jeffreyi	Jeffrey Pine	Good.	Retain.	
H5	22	Pinus	jeffreyi	Jeffrey Pine	Good.	Retain.	
H6	10	Abies	concolor	White Fir	Good.	Retain.	
H7	17	Pinus	ponderosa	Ponderosa Pine	Good. Suppressed.	Remove. Thin.	Topped, pruned for utility line clearance.
H8	19	Pinus	ponderosa	Ponderosa Pine	Good. Suppressed.	Retain.	Topped, pruned for utility line clearance.

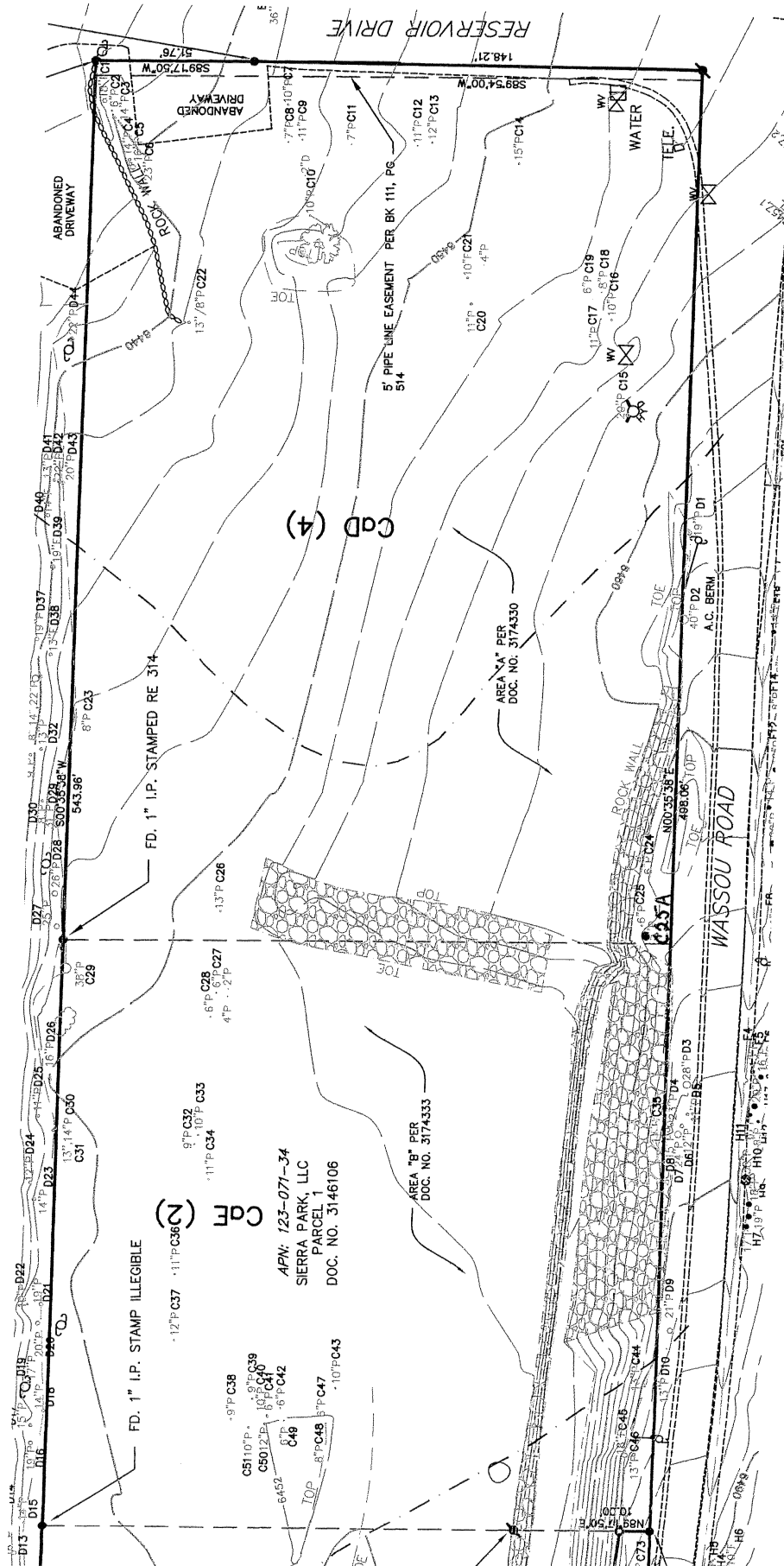
Tree #	Size	Genus	Species	Common Name	Condition	Recommendation	Additional Comments
H9	18	Pinus	ponderosa	Ponderosa Pine	Good. Suppressed.	Remove. Thin.	Topped, pruned for utility line clearance.
H10	38	Pinus	ponderosa	Ponderosa Pine	Good. Suppressed.	Retain.	Topped, pruned for utility line clearance.
H11	10	Pinus	ponderosa	Ponderosa Pine	Fair. Suppressed.	Remove.	
H12	8	Pinus	ponderosa	Ponderosa Pine	Fair.	Remove.	Topped, pruned for utility line clearance.
H13	20	Pinus	ponderosa	Ponderosa Pine	Good.	Retain.	Pruned for utility line clearance.
I1	24	Pinus	jeffreyi	Jeffrey Pine	Good.	Retain. Remove wood nailed into trunk.	
I2	15	Pinus	jeffreyi	Jeffrey Pine	Good.	Retain.	
I3	20	Pinus	jeffreyi	Jeffrey Pine	Good.	Retain.	
I4	25	Pinus	jeffreyi	Jeffrey Pine	Good.	Retain.	
I5	21	Pinus	jeffreyi	Jeffrey Pine	Good.	Retain.	
I6	19	Pinus	jeffreyi	Jeffrey Pine	Good. Old trunk wound on west side.	Retain.	
I7	25	Pinus	jeffreyi	Jeffrey Pine	Good.	Retain.	
I8	20	Pinus	jeffreyi	Jeffrey Pine	Good.	Retain.	
I9	10	Pinus	jeffreyi	Jeffrey Pine	Good.	Retain.	
J1	12	Pinus	jeffreyi	Jeffrey Pine	Good.	Retain. Prune limbs for roof clearance.	
J2	44	Pinus	ponderosa	Ponderosa Pine	Good.	Retain. Remove electrical.	
J3	36	Pinus	jeffreyi	Jeffrey Pine	Good.	Retain. Remove electrical & light fixture.	
J4	40	Pinus	jeffreyi	Jeffrey Pine	Stump.	N/A	Previously removed.
J4A	8	Abies	concolor	White Fir	Good.	Retain. Prune for roof clearance.	Not on plan. Measured & numbered in field, location estimated & noted on map.
J5	6	Pinus	jeffreyi	Jeffrey Pine	Good.	Retain.	
J6	13	Pinus	jeffreyi	Jeffrey Pine	Good.	Retain.	
J7	8	Pinus	jeffreyi	Jeffrey Pine	Good. Suppressed.	Remove. Thin.	
J8	8	Pinus	jeffreyi	Jeffrey Pine	Good.	Retain.	
J8A	7	Pinus	jeffreyi	Jeffrey Pine	Fair.	Remove. Thin.	Not on plan. Measured & numbered in field, location estimated & noted on map.

Tree #	Size	Genus	Species	Common Name	Condition	Recommendation	Additional Comments
J9	22	Pinus	jeffreyi	Jeffrey Pine	Good. Old trunk wound on northeast side.	Retain. Remove electrical.	
J10	38	Pinus	jeffreyi	Jeffrey Pine	Good.	Retain.	
J11		Pinus	jeffreyi	Jeffrey Pine	Good. Old trunk wound on north side.	Retain. Remove wood nailed into tree.	
J12	39	Pinus	jeffreyi	Jeffrey Pine	Good. Old basal wound on south side.	Retain.	
J13	20	Pinus	jeffreyi	Jeffrey Pine	Fair. Extensive trunk wounds on north & east side.	Remove.	Tree leans to north.
J14	26	Pinus	jeffreyi	Jeffrey Pine	Good.	Retain.	
J15	23	Pinus	jeffreyi	Jeffrey Pine	Good.	Retain.	
K1	11	Pinus	jeffreyi	Jeffrey Pine	Good.	Retain. Remove rock at base on northeast side.	
K2	7	Pinus	jeffreyi	Jeffrey Pine	Good.	Retain.	
K3	10	Pinus	jeffreyi	Jeffrey Pine	Good.	Retain.	
L1	13	Pinus	jeffreyi	Jeffrey Pine	Fair.	Remove.	Topped for utility line clearance.
L2	23	Pinus	jeffreyi	Jeffrey Pine	Good. Old small basal wound on north side.	Retain.	
L3	32	Pinus	jeffreyi	Jeffrey Pine	Good.	Retain. Remove electrical.	
L4	39	Pinus	jeffreyi	Jeffrey Pine	Good. Old basal wound on east side.	Remove. Remove electrical & light fixture.	Old lightning strike on east side.
L5	16	Pinus	jeffreyi	Jeffrey Pine	Good. Small trunk wounds on north side	Retain.	
L6	10	Abies	concolor	White Fir	Good. Suppressed.	Remove. Thin.	
L7	15	Abies	concolor	White Fir	Fair. Dead top.	Remove. Thin.	Grown together at base.
L8	7	Abies	concolor	White Fir	Fair.	Remove. Thin.	
L9	15	Abies	concolor	White Fir	Good. Suppressed.	Retain	

Tree #	Size	Genus	Species	Common Name	Condition	Recommendation	Additional Comments
L10	13	Abies	concolor	White Fir	Fair. Very suppressed, no top.	Remove.	
L11	14	Abies	concolor	White Fir	Good. Suppressed.	Remove. Thin.	
L12	16	Pinus	jeffreyi	Jeffrey Pine	Good. Suppressed.	Retain.	
L13	10	Abies	concolor	White Fir	Good.	Retain.	
L14	18	Abies	concolor	White Fir	Good. Suppressed	Retain.	
L15	7	Abies	concolor	White Fir	Good.	Retain.	
L16	10	Pinus	jeffreyi	Jeffrey Pine	Fair. Suppressed.	Remove. Thin.	Incorrectly noted as Fir on list.
L17	15	Abies	concolor	White Fir	Dead.	Remove.	
L18	15	Pinus	jeffreyi	Jeffrey Pine	Good. Small trunk wounds on northwest side.	Retain.	
L19	21	Pinus	jeffreyi	Jeffrey Pine	Good.	Retain.	
L20	21	Pinus	jeffreyi	Jeffrey Pine	Good. Small basal wound on northwest side.	Retain. Remove light fixture & electrical.	
L21	24	Pinus	jeffreyi	Jeffrey Pine	Good.	Retain.	
L22	22	Pinus	jeffreyi	Jeffrey Pine	Fair. Large trunk wound on northwest side.	Remove.	Strong lean in northwest direction.
L23	8	Populus	tremuloides	Aspen	Fair.	Remove.	Embedded in fence. Strong lean over adjacent parking lot. Incorrectly noted as Alder on list.
L23A	10	Populus	tremuloides	Aspen	Good.	Retain. Prune for roof overhang clearance.	Incorrectly noted as L1 on map, L1 previously used.
L23B	8	Prunus	cerasifera	Purple Leaf Plum	Fair.	Retain. Prune for roof overhang clearance. Remove smaller stem embedded in fence.	Not on plan. Measured & numbered in field, location estimated & noted on map.
L24	18	Calocedrus	decurrens	Incense Cedar	Good.	Retain.	
L25	33	Pinus	jeffreyi	Jeffrey Pine	Good.	Retain.	Sapsucker bird injury.
L26	10	Abies	concolor	White Fir	Dead.	Remove.	
L27	24	Pinus	jeffreyi	Jeffrey Pine	Good.	Retain.	
L28	22	Pinus	jeffreyi	Jeffrey Pine	Good.	Retain.	
L29	6	Pinus	jeffreyi	Jeffrey Pine	Poor.	Remove.	

Tree #	Size	Genus	Species	Common Name	Condition	Recommendation	Additional Comments
L30	20	Pinus	jeffreyi	Jeffrey Pine	Fair. Double leader.	Remove.	Embedded dead previous top.
L31	14	Pinus	jeffreyi	Jeffrey Pine	Good.	Retain.	
L32	18	Pinus	jeffreyi	Jeffrey Pine	Good.	Retain.	Sapsucker bird injury.
L33	11	Pinus	jeffreyi	Jeffrey Pine	Poor.	Remove.	No top.
M1	18	Calocedrus	decurrens	Incense Cedar	Fair. Severe trunk wound on north side.	Remove.	Strong lean away from wound.
M2	18	Pinus	jeffreyi	Jeffrey Pine	Fair. Multiple leaders.	Remove.	
M3	10	Pinus	jeffreyi	Jeffrey Pine	Fair.	Remove.	Topped for utility line clearance.
M4	11	Pinus	jeffreyi	Jeffrey Pine	Fair.	Remove.	Topped for utility line clearance.
M5	24	Pinus	jeffreyi	Jeffrey Pine	Good. Old basal wound on northwest side.	Retain.	
M6	20	Pinus	jeffreyi	Jeffrey Pine	Good. Small old trunk wound on northeast side.	Retain.	Extensive sapsucker bird injury.
M7	7	Pinus	jeffreyi	Jeffrey Pine	Poor.	Remove.	No top.
M8	17	Pinus	jeffreyi	Jeffrey Pine	Fair. Suppressed, dead top embedded in trunk, new top developed.	Remove.	
M9	22	Pinus	jeffreyi	Jeffrey Pine	Good. Double leader with embedded bark.	Retain.	
M10	25	Pinus	jeffreyi	Jeffrey Pine	Good.	Retain.	
N1	6	Populus	tremuloides	Aspen	Fair. Bacterial wetwood disease.	Remove from plan.	Measured in field; 5 inch tree incorrectly noted on plan as 6 inch. Incorrectly noted as Alder on list.
N2	6	Populus	tremuloides	Aspen	Good.	Retain.	Incorrectly noted as Alder on list.
N3	10	Prunus	cerasifera	Purple Leaf Plum	Good. Poor structure, wounds on southwest side of trunk & branch.	Retain.	Incorrectly noted as Alder on list.
N4	12	Prunus	cerasifera	Purple Leaf Plum	Good. Poor structure.	Retain.	Incorrectly noted as Alder on list.
N5	40	Sequoiadendron	giganteum	Giant Sequoia	Good.	Retain.	Incorrectly noted as Cedar on list.
O1	6	Calocedrus	decurrens	Incense Cedar	Good.	Retain.	Remove stakes & ties embedded in trunk.
O2	6	Calocedrus	decurrens	Incense Cedar	Good.	Retain.	Remove stakes & ties embedded in trunk.





This is a detailed topographic map of a property in Tahoe, California. The map shows several lots, including Lot 14, Lot 15, Lot 16, Lot 17, and Lot 18. Key features include:

- Water Bodies:** A large reservoir is located at the top of the map, with a "TRAVELED WAY" leading to it. A "20' WATER PUMP ESMT." is also shown.
- Roads:** "WASSOU ROAD" runs along the left side, and "LAKE VIEW AVENUE" runs along the right side. A "GRAVEL DRIVEWAY" is shown in the center.
- Structures:** There are several "SHEDS" and "CONTAINERS (3)" and "CONTAINERS (4)". A "BUILDING F.F. = 6465.0'" is also present.
- Topography:** Contour lines are drawn across the map, indicating elevation. Elevation points are marked with numbers like 8150, 8140, 8130, etc.
- Property Information:** The map includes "APN 123-054-01" and "TAMHO BILTMORE, INC. PARCEL 1 DOC. NO. 1074708".
- Other Features:** A "TOP OF BANK" line is shown, and a "GRAVEL DRIVEWAY" is labeled. The map also shows "EDGE OF PAVEMENT" and "D.I." (Drainage Inlet).

Boulder Bay Project

Biltmore Parcel (Sheet 2) APN 123-052-04

Tree #	Size	Genus	Species	Common Name	Condition	Recommendation	Additional Comments
A1	6	Picea	pungens	Colorado Spruce	Fair. Stressed.	Retain.	Incorrectly noted as 16"pine.
A2	13	Pinus	jeffreyi	Jeffrey Pine	Good.	Retain.	
A3	6	Pinus	jeffreyi	Jeffrey Pine	Poor.	Remove.	
A4	23	Pinus	jeffreyi	Jeffrey Pine	Fair.	Remove.	Topped for utility line clearance, 1/2 tree remaining.
A5	21	Pinus	jeffreyi	Jeffrey Pine	Fair.	Remove.	Topped for utility line clearance, 1/2 tree remaining.
A6	17	Pinus	jeffreyi	Jeffrey Pine	Fair.	Remove.	Topped for utility line clearance, 1/2 tree remaining.
A7	18	Pinus	jeffreyi	Jeffrey Pine	Fair.	Remove.	Topped for utility line clearance, 1/2 tree remaining.
A8	17	Pinus	jeffreyi	Jeffrey Pine	Fair.	Remove.	Topped for utility line clearance, 1/2 tree remaining.
A9	26/12	Pinus	jeffreyi	Jeffrey Pine	Fair.	Remove.	Topped for utility line clearance, 1/2 tree remaining. 12 inch tree not on list.
A10	20	Pinus	jeffreyi	Jeffrey Pine	Good. Single base, triple stem.	Retain.	
A11	20	Pinus	jeffreyi	Jeffrey Pine		Retain.	
A12	16	Pinus	jeffreyi	Jeffrey Pine		Retain.	
A13	9	Pinus	jeffreyi	Jeffrey Pine	Good.	Retain. Prune broken branch.	
A14	30	Pinus	jeffreyi	Jeffrey Pine	Good. Multiple leaders.	Retain.	Burl growth.
A15	32	Pinus	jeffreyi	Jeffrey Pine	Good.	Retain.	
A16	27	Pinus	jeffreyi	Jeffrey Pine	Good.	Retain.	Lean in upper 2/3 that rights itself.
A17	36	Pinus	jeffreyi	Jeffrey Pine	Good.	Retain.	
A18	26	Pinus	jeffreyi	Jeffrey Pine	Good.	Retain.	
A19	20	Pinus	jeffreyi	Jeffrey Pine	Fair. Suppressed top, no main leader, branches only on west side.	Remove.	Soil fill at base, limbs on roof, minimal foliage after roof clearance pruning.
A20	38	Pinus	jeffreyi	Jeffrey Pine	Good.	Retain. Remove utility line.	Connected at base to trees A22 and A23.
A21	23	Pinus	jeffreyi	Jeffrey Pine	Good.	Remove.	Trunk embedded in roof overhang.
A22	18	Pinus	jeffreyi	Jeffrey Pine	Fair. Concrete sidewalk against base.	Retain.	Connected at base to trees A20 and A23.

Tree #	Size	Genus	Species	Common Name	Condition	Recommendation	Additional Comments
A23	33	Pinus	jeffreyi	Jeffrey Pine	Good. Concrete sidewalk against base.	Retain.	Connected at base to trees A20 and A22.
A24	6	Picea	pungens	Colorado Spruce	Poor. Trunk wounds on west side.	Remove.	Incorrectly noted as pine.
A25	7	Picea	pungens	Colorado Spruce	Fair. Stressed, small trunk wound on southwest side.	Retain.	Incorrectly noted as pine.
A26	7	Picea	pungens	Colorado Spruce	Fair.	Retain.	Incorrectly noted as pine.
A27	9	Picea	pungens	Colorado Spruce	Fair. Small trunk wounds from broken branches.	Retain.	Incorrectly noted as pine.
A28	28	Pinus	jeffreyi	Jeffrey Pine	Good.	Retain. Remove utilities.	
A29	29	Pinus	jeffreyi	Jeffrey Pine	Good.	Retain.	Basal roots exposed.
A30	38	Pinus	jeffreyi	Jeffrey Pine	Good.	Retain.	
A31	23	Pinus	jeffreyi	Jeffrey Pine	Good.	Retain.	
A32	30	Pinus	jeffreyi	Jeffrey Pine	Good.	Retain. Remove light fixture.	
A33	26	Pinus	jeffreyi	Jeffrey Pine	Good. Small, old basal wound.	Retain.	
A34	22	Pinus	jeffreyi	Jeffrey Pine	Good.	Retain. Remove utilities.	
A35	24	Pinus	jeffreyi	Jeffrey Pine	Good.	Retain.	
A36	23	Pinus	jeffreyi	Jeffrey Pine	Good.	Retain.	
A37	48	Pinus	jeffreyi	Jeffrey Pine	Poor. Base constricted, narrower than trunk.	Remove. Remove utilities.	Severe sapsucker injury. Old lightning strike.
A38	6	Picea	pungens	Colorado Spruce	Fair. Stressed.	Retain. Fix irrigation. Remove double leader stump.	Incorrectly noted as pine.
A39	6	Picea	pungens	Colorado Spruce	Fair. Stressed.	Retain. Fix irrigation.	Incorrectly noted as pine.
A40	6	Picea	pungens	Colorado Spruce	Fair. Stressed. Trunk wound on south side.	Retain. Fix irrigation.	Incorrectly noted as pine.
A41	6	Picea	pungens	Colorado Spruce	Poor.	Remove.	Incorrectly noted as pine.
A42	32	Pinus	jeffreyi	Jeffrey Pine	Good.	Retain.	

Tree #	Size	Genus	Species	Common Name	Condition	Recommendation	Additional Comments
A43	31	Pinus	jeffreyi	Jeffrey Pine	Fair. Large basal wound on south side filled with foam, covered with paint.	Remove. Remove utilities.	
A44	25	Pinus	jeffreyi	Jeffrey Pine	Fair. Large basal wound on south side.	Remove.	
A45	22	Pinus	jeffreyi	Jeffrey Pine	Good.	Retain.	
A46	38	Pinus	jeffreyi	Jeffrey Pine	Good.	Retain. Remove utilities.	Not numbered on plan.
A47	6	Picea	pungens	Colorado Spruce	Poor. Stressed. Large trunk wound on west side.	Remove.	Not numbered & measured on plan. Measured & numbered in field & noted on map.
A48	8	Picea	pungens	Colorado Spruce	Good. Small trunk wound on south side.	Retain.	Not numbered or measured on plan. Measured & numbered in field & noted on map.

Boulder Bay Project

Biltmore Parcel Offsite (Sheet 2)

Tree #	Size	Genus	Species	Common Name	Condition	Recommendation	Additional Comments
B1	36	Pinus	ponderosa	Ponderosa Pine	Good.	Retain. Remove nail & light fixture.	
B2	9	Pinus	jeffreyi	Jeffrey Pine	Good.	Retain.	
B3	8	Pinus	jeffreyi	Jeffrey Pine	Good.	Retain.	
B4	8	Pinus	jeffreyi	Jeffrey Pine	Good.	Retain. Remove broken stake stubs.	
B5	9	Pinus	jeffreyi	Jeffrey Pine	Good.	Retain.	Sequoia pitch moth damage.

Boulder Bay Project

Sierra Park Parcel (Sheet 5) APN 123-071-34

Tree #	Size	Genus	Species	Common Name	Condition	Recommendation	Additional Comments
C1	18	Pinus	jeffreyi	Jeffrey Pine	Good.	Remove.	Pruned for utility line clearance.
C2	6	Pinus	jeffreyi	Jeffrey Pine	Fair. Suppressed.	Remove.	
					Fair. Suppressed. Severe deformities at base from something previously embedded. Lower 2 feet of trunk sunken inward.		
C3	14	Pinus	jeffreyi	Jeffrey Pine	Fair. Suppressed. Leaning.	Remove.	
C4	14	Pinus	jeffreyi	Jeffrey Pine	Fair. Suppressed. Leaning.	Remove.	
C5	16	Pinus	jeffreyi	Jeffrey Pine	Good.	Retain.	
C6	23	Pinus	jeffreyi	Jeffrey Pine	Fair. Severe basal wound on east side.	Remove.	
C7	10	Pinus	jeffreyi	Jeffrey Pine	Good. Suppressed.	Remove. Thin.	
C8	7	Pinus	jeffreyi	Jeffrey Pine	Good.	Retain.	Thin adjacent 2 inch pine.
C9	11	Pinus	jeffreyi	Jeffrey Pine	Good.	Retain. Thin.	Thin adjacent 2 inch pine.
C10	10	Pinus	jeffreyi	Jeffrey Pine	Good.	Retain.	Thin adjacent 2 inch pine.
C11	7	Pinus	jeffreyi	Jeffrey Pine	Good. Suppressed.	Remove. Thin.	
C12	11	Pinus	jeffreyi	Jeffrey Pine	Good.	Retain.	
C13	12	Pinus	jeffreyi	Jeffrey Pine	Good.	Retain.	Thin adjacent 1 inch pine.
C14	15	Pinus	jeffreyi	Jeffrey Pine	Fair.	Remove.	Chain link fence embedded in lower trunk & branches on southwest side.
C15	20	Pinus	jeffreyi	Jeffrey Pine	Good.	Remove. Thin.	
C16	10	Pinus	jeffreyi	Jeffrey Pine	Good.	Retain.	
C17	11	Pinus	jeffreyi	Jeffrey Pine	Good.	Retain.	
C18	8	Pinus	jeffreyi	Jeffrey Pine	Good. Suppressed.	Remove. Thin.	
C19	6	Pinus	jeffreyi	Jeffrey Pine	Good.	Retain.	
C20	11	Pinus	jeffreyi	Jeffrey Pine	Good.	Retain.	

C21	10	Picea	pungens	Colorado Spruce	Fair.	Remove. Thin.	Incorrectly noted as Fir on plan & Pine on list. Poor trunk & branching structure.
C22	13	Pinus	jeffreyi	Jeffrey Pine	Good.	Retain. Remove codominant leader on north side.	Incorrectly noted with 8 inch tree. Stone wall on west side does not appear embedded.
C23	8	Pinus	jeffreyi	Jeffrey Pine	N/A	N/A	Not on site.
C24	6	Pinus	jeffreyi	Jeffrey Pine	Good.	Retain.	
C25	6	Pinus	jeffreyi	Jeffrey Pine	Fair. Suppressed. Basal wound on northeast & east side.	Remove. Thin.	
C25A	15	Pinus	jeffreyi	Jeffrey Pine	Good.	Retain.	Not numbered on plan. Numbered in field & noted on map.
C26	13	Pinus	jeffreyi	Jeffrey Pine	Good.	Retain.	
C27	6	Pinus	jeffreyi	Jeffrey Pine	Good. Small old trunk wound on north side.	Retain.	Thin adjacent 1 & 3 inch pines.
C28	6	Pinus	jeffreyi	Jeffrey Pine	Good.	Retain.	
C29	38	Pinus	ponderosa	Ponderosa Pine	Good.	Retain. Relocate utilities to power pole. Cut abandoned utilities off trunk.	
C30	14	Pinus	jeffreyi	Jeffrey Pine	Good.	Retain.	
C31	13	Pinus	jeffreyi	Jeffrey Pine	Good. Suppressed.	Remove. Thin.	
C32	9	Pinus	jeffreyi	Jeffrey Pine	Good.	Remove. Thin.	
C33	10	Pinus	jeffreyi	Jeffrey Pine	Good.	Retain.	
C34	11	Pinus	jeffreyi	Jeffrey Pine	Good.	Retain.	
C35	11	Pinus	ponderosa	Ponderosa Pine	Poor. Suppressed. No top. Poor structure.	Remove. Thin.	
C36	11	Pinus	jeffreyi	Jeffrey Pine	Good.	Retain.	
C37	12	Pinus	jeffreyi	Jeffrey Pine	Good.	Retain.	
C38	9	Pinus	jeffreyi	Jeffrey Pine	Good.	Retain.	
C39	9	Pinus	jeffreyi	Jeffrey Pine	Good.	Retain.	
C40	10	Pinus	jeffreyi	Jeffrey Pine	Good. Suppressed.	Remove. Thin.	
C41	6	Pinus	jeffreyi	Jeffrey Pine	N/A	N/A	Not on site.
C42	6	Pinus	jeffreyi	Jeffrey Pine	Good.	Retain.	
C43	10	Pinus	jeffreyi	Jeffrey Pine	Good.	Retain.	Remove adjacent 2 inch pine.

C44	13	Pinus	jeffreyi	Jeffrey Pine	Fair. Suppressed.	Retain.	
C45	18	Pinus	jeffreyi	Jeffrey Pine	Good.	Retain.	Pruned for utility line clearance.
C46	13	Abies	concolor	White Fir	Poor. Top third of tree is dead.	Remove.	
C47	6	Pinus	jeffreyi	Jeffrey Pine	Good.	Retain. Remove fill soil at base.	
C48	8	Pinus	jeffreyi	Jeffrey Pine	Good.	Retain. Remove fill soil at base.	
C49	6	Pinus	jeffreyi	Jeffrey Pine	Poor. Severe trunk wounds on north side.	Remove.	
C50	12	Pinus	jeffreyi	Jeffrey Pine	Good.	Retain.	
C51	10	Pinus	jeffreyi	Jeffrey Pine	Good.	Remove. Thin.	
C52	8	Pinus	jeffreyi	Jeffrey Pine	Good.	Retain. Remove fill soil at base.	
C53	17	Pinus	jeffreyi	Jeffrey Pine	Good.	Retain.	
C54	6	Pinus	jeffreyi	Jeffrey Pine	Good.	Retain.	Remove two adjacent 4 inch pines.
C55	22	Pinus	jeffreyi	Jeffrey Pine	Good.	Retain.	
C56	22	Pinus	jeffreyi	Jeffrey Pine	Good.	Retain.	
C57	7	Pinus	jeffreyi	Jeffrey Pine	Good.	Retain.	Remove adjacent 1 & 2 inch pines.
C58	13	Pinus	jeffreyi	Jeffrey Pine	Good.	Retain.	Remove adjacent 1 inch pine.
C59	7	Pinus	jeffreyi	Jeffrey Pine	Good.	Retain.	
C60	8	Pinus	jeffreyi	Jeffrey Pine	Good.	Retain.	
C61	19	Abies	concolor	White Fir	Good.	Retain.	Strong lean but corrected. Providing slope stabilization. Remove if build below.
C62	12	Abies	concolor	White Fir	Good.	Retain.	
C63	18	Abies	concolor	White Fir	Fair. Dead top. Internal disease.	Remove.	
C64	21	Abies	concolor	White Fir	Fair. Dead top.	Remove.	Rock embedded in base on southwest side.
C65	29	Pinus	jeffreyi	Jeffrey Pine	Good.	Retain.	
C66	6	Pinus	jeffreyi	Jeffrey Pine	Good.	Retain.	
C67	15	Pinus	jeffreyi	Jeffrey Pine	Good.	Retain.	
C68	10	Pinus	jeffreyi	Jeffrey Pine	Good.	Retain.	
C69	12	Pinus	jeffreyi	Jeffrey Pine	Good.	Retain.	
C70	11	Pinus	jeffreyi	Jeffrey Pine	Good.	Retain.	
C71	10	Pinus	jeffreyi	Jeffrey Pine	Good.	Retain.	
C72	28	Pinus	jeffreyi	Jeffrey Pine	Good.	Retain.	
C73	16	Pinus	jeffreyi	Jeffrey Pine	Good.	Retain.	

C74	12	Pinus	jeffreyi	Jeffrey Pine	Fair. Old trunk & basal wounds on west side.	Remove.	
C75	8	Pinus	jeffreyi	Jeffrey Pine	Poor. Suppressed. No top. Poor structure.	Remove. Thin.	
C76	27	Pinus	jeffreyi	Jeffrey Pine	Good.	Retain.	
C77	12	Abies	concolor	White Fir	Fair.	Retain. Prune limb stub off southeast side.	
C78	19	Pinus	jeffreyi	Jeffrey Pine	Fair. Thin crown.	Retain.	Providing slope stabilization. Remove if build below.

Boulder Bay Project

Sierra Park Parcel Offsite (Sheet 5)

Tree #	Size	Genus	Species	Common Name	Condition	Recommendation	Additional Comments
D1	19	Pinus	jeffreyi	Jeffrey Pine	Fair.	Remove.	Topped & excessively pruned for utility line clearance.
D2	40	Pinus	ponderosa	Ponderosa Pine	Good. Old trunk wound on west side.	Retain.	Pruned for utility line clearance.
D3	28	Pinus	ponderosa	Ponderosa Pine	Good. Old basal wound on west side.	Retain. Remove nails.	
D4	23	Pinus	ponderosa	Ponderosa Pine	Good.	Retain. Remove nail.	Steel pipe embedded at base between this & tree D3. Sapsucker bird injury.
D5	11	Pinus	ponderosa	Ponderosa Pine	Fair. Suppressed. Old basal wound on west side. Poor structure, no top.	Remove. Thin.	
D6	12	Pinus	ponderosa	Ponderosa Pine	Fair. Suppressed. Leaning.	Remove. Thin.	Sapsucker bird injury.
D7	24	Pinus	ponderosa	Ponderosa Pine	Good.	Retain.	Pruned for utility line clearance.
D8	15	Pinus	ponderosa	Ponderosa Pine	Fair. Suppressed. No top.	Remove. Thin.	
D9	21	Pinus	jeffreyi	Jeffrey Pine	Fair.	Remove.	Topped & pruned for utility line clearance.
D10	13	Pinus	jeffreyi	Jeffrey Pine	Fair.	Remove.	Topped & pruned for utility line clearance.
D11	20	Pinus	jeffreyi	Jeffrey Pine	Good.	Retain.	
D12	26	Pinus	jeffreyi	Jeffrey Pine	Good. Old trunk wound on south side.	Retain.	
D13	16	Pinus	jeffreyi	Jeffrey Pine	Good.	Retain.	
D14	15	Abies	concolor	White Fir	Good.	Retain.	
D15	14	Pinus	jeffreyi	Jeffrey Pine	Good.	Retain.	
D16	19	Pinus	jeffreyi	Jeffrey Pine	Good.	Retain.	
D17	15	Pinus	jeffreyi	Jeffrey Pine	Good.	Retain.	
D18	14	Pinus	jeffreyi	Jeffrey Pine	Fair. Severe trunk wound on west side.	Remove. Thin.	
D19	17	Pinus	jeffreyi	Jeffrey Pine	Good.	Retain.	
D20	20	Pinus	jeffreyi	Jeffrey Pine	Good.	Retain.	

D21	19	Pinus	jeffreyi	Jeffrey Pine	Good.	Retain.	
D22	10	Abies	concolor	White Fir	Fair. Suppressed.	Remove. Thin.	Incorrectly noted as Pine.
D23	14	Pinus	jeffreyi	Jeffrey Pine	Good.	Retain.	
D24	12	Pinus	jeffreyi	Jeffrey Pine	Good.	Retain.	
D25	11	Pinus	jeffreyi	Jeffrey Pine	Good.	Retain.	
D26	16	Pinus	jeffreyi	Jeffrey Pine	Good.	Retain.	
D27	25	Pinus	ponderosa	Ponderosa Pine	Good.	Retain. Remove metal in trunk.	
D28	26	Pinus	ponderosa	Ponderosa Pine	Good.	Retain.	
D29	31	Pinus	jeffreyi	Jeffrey Pine	Good.	Retain. Remove abandoned utility line. Relocate current utility line from trunk & place back on adjacent power pole.	
D30	8	Pinus	jeffreyi	Jeffrey Pine	Good. Circling root.	Retain.	
D31	9	Pinus	jeffreyi	Jeffrey Pine	Good.	Retain.	
D32	13	Pinus	jeffreyi	Jeffrey Pine	Good.	Retain.	
D33	8	Pinus	jeffreyi	Jeffrey Pine	Fair. Suppressed.	Remove. Thin.	
D34	14	Pinus	jeffreyi	Jeffrey Pine	Good.	Retain.	
D35	22	Pinus	jeffreyi	Jeffrey Pine	Good.	Retain.	
D36	12	Pinus	jeffreyi	Jeffrey Pine	Good.	Retain.	
D37	19	Pinus	jeffreyi	Jeffrey Pine	Good.	Retain.	
D38	13	Abies	concolor	White Fir	Good.	Retain.	
D39	19	Abies	concolor	White Fir	Good.	Retain.	
D40	14	Abies	concolor	White Fir	Fair. Double leader.	Retain.	
D41	13	Pinus	jeffreyi	Jeffrey Pine	Fair. Suppressed.	Retain.	All three trees grown together at base. Incorrectly noted as Pine on map & Fir on list.
D42	22	Pinus	jeffreyi	Jeffrey Pine	Good.	Retain.	
D43	20	Pinus	jeffreyi	Jeffrey Pine	Good.	Retain.	
D44	22	Cedrus	atlantica	Atlas Cedar	Good.	Retain.	

Boulder Bay Project

Horsebook Parcel (Sheet 4) APN 123-054-01

Tree #	Size	Genus	Species	Common Name	Condition	Recommendation	Additional Comments
E1	12	Pinus	jeffreyi	Jeffrey Pine	Good. Girdling root on east side.	Remove. Thin.	
E2	22	Pinus	jeffreyi	Jeffrey Pine	Good. Small basal wound on north side. Some root exposure.	Retain.	
E3	9	Pinus	jeffreyi	Jeffrey Pine	Good.	Retain.	
E4	7	Pinus	jeffreyi	Jeffrey Pine	Good. Suppressed.	Remove. Thin.	
E4A	7	Pinus	jeffreyi	Jeffrey Pine	Good. Suppressed.	Remove. Thin.	Not on plan. Measured & numbered in field, location estimated & noted on map.
E4B	7	Pinus	jeffreyi	Jeffrey Pine	Good. Suppressed.	Remove. Thin.	Not on plan. Measured & numbered in field, location estimated & noted on map.
E5	18	Pinus	jeffreyi	Jeffrey Pine	Good.	Retain.	
E6	10	Pinus	jeffreyi	Jeffrey Pine	Stump.	N/A	Recently removed, assuming utility line clearance.
E7	15	Pinus	jeffreyi	Jeffrey Pine	Stump.	N/A	Recently removed, assuming utility line clearance.
E8	8	Pinus	jeffreyi	Jeffrey Pine	Stump.	N/A	Recently removed, assuming utility line clearance.
E9	15	Pinus	jeffreyi	Jeffrey Pine	Good.	Retain.	
E10	6	Pinus	jeffreyi	Jeffrey Pine	Good.	Retain.	
E11	10	Pinus	jeffreyi	Jeffrey Pine	Good.	Retain.	
E12	16	Pinus	jeffreyi	Jeffrey Pine	Good.	Retain.	
E13	14	Pinus	jeffreyi	Jeffrey Pine	Good. Codominant branches.	Remove.	Chain link fencing embedded in lower trunk.
E14	8	Pinus	jeffreyi	Jeffrey Pine	Fair.	Remove.	Trunk grown into roof overhang.
E15	12	Pinus	jeffreyi	Jeffrey Pine	Fair.	Remove.	Trunk grown into roof overhang.
E16	14	Pinus	jeffreyi	Jeffrey Pine	Good. Suppressed.	Remove. Thin.	
E17	10	Pinus	jeffreyi	Jeffrey Pine	Good. Crowded, suppressed.	Remove. Thin.	Trunk grown into roof overhang.
E18	6	Pinus	jeffreyi	Jeffrey Pine	Fair.	Remove.	Trunk grown into roof overhang.

Tree #	Size	Genus	Species	Common Name	Condition	Recommendation	Additional Comments
E19	8	Pinus	jeffreyi	Jeffrey Pine	Good.	Retain.	
E20	15	Pinus	jeffreyi	Jeffrey Pine	Good.	Retain.	
E21	10	Pinus	jeffreyi	Jeffrey Pine	Good.	Remove. Thin.	
E22	12	Pinus	jeffreyi	Jeffrey Pine	Good.	Retain.	
E23	12	Pinus	jeffreyi	Jeffrey Pine	Good. Suppressed, limbs only on east side.	Remove. Thin.	
E24	20	Pinus	jeffreyi	Jeffrey Pine	Good.	Retain.	
E25	14	Pinus	jeffreyi	Jeffrey Pine	Good.	Remove. Thin.	
E26	21	Pinus	jeffreyi	Jeffrey Pine	Good.	Retain.	
E27	16	Pinus	jeffreyi	Jeffrey Pine	Good.	Retain.	
E28	8	Pinus	jeffreyi	Jeffrey Pine	Fair. Suppressed.	Remove.	
E29	6	Pinus	jeffreyi	Jeffrey Pine	Fair. Suppressed.	Remove. Thin.	
E30	26	Pinus	jeffreyi	Jeffrey Pine	Good.	Retain.	
E31	12	Abies	concolor	White Fir	Good.	Retain.	

Boulder Bay Project

Horsebook Parcel Offsite (Sheet 4)

Tree #	Size	Genus	Species	Common Name	Condition	Recommendation	Additional Comments
F1	40	Pinus	jeffreyi	Jeffrey Pine	Good.	Retain.	Cut & abandon light fixture & electrical embedded.
F2	33	Pinus	jeffreyi	Jeffrey Pine	Good.	Retain.	Cut & abandon light fixture.
F3	20	Pinus	jeffreyi	Jeffrey Pine	Good.	Retain.	
F4	13	Pinus	ponderosa	Ponderosa Pine	Fair. Old trunk wound on east side.	Remove.	Branches stubbed for utility line clearance.
F5	16	Pinus	ponderosa	Ponderosa Pine	Good. Old trunk wound on north side.	Remove. Thin.	Pruned for utility line clearance.
F6	20	Pinus	ponderosa	Ponderosa Pine	Good.	Retain.	
F7	18	Pinus	ponderosa	Ponderosa Pine	Good. Suppressed, no limbs on east side. Deformed top.	Remove. Thin.	
F8	16	Pinus	jeffreyi	Jeffrey Pine	Stump.	N/A	Recently removed, assuming utility line clearance.
F9	14	Pinus	jeffreyi	Jeffrey Pine	Stump.	N/A	Recently removed, assuming utility line clearance.
F10	20	Pinus	jeffreyi	Jeffrey Pine	Stump.	N/A	Recently removed, assuming utility line clearance.
F11	14	Pinus	jeffreyi	Jeffrey Pine	Stump.	N/A	Recently removed, assuming utility line clearance.
F12	16	Pinus	jeffreyi	Jeffrey Pine	Good.	Retain.	Pruned for utility line clearance.
F13	12	Pinus	jeffreyi	Jeffrey Pine	Good. Suppressed.	Remove.	
F14	8	Pinus	jeffreyi	Jeffrey Pine	Fair. Suppressed.	Remove.	
F15	14	Pinus	jeffreyi	Jeffrey Pine	Good.	Retain.	
F16	18	Pinus	jeffreyi	Jeffrey Pine	Good. Suppressed.	Remove.	
F17	18	Pinus	jeffreyi	Jeffrey Pine	Good.	Retain.	
F17A	15	Pinus	jeffreyi	Jeffrey Pine	Good.	Retain.	Not on plan. Measured & numbered in field, location estimated & noted on map.
F18	14	Pinus	jeffreyi	Jeffrey Pine	Good.	Retain.	
F19	14	Pinus	jeffreyi	Jeffrey Pine	Good.	Retain.	
F20	10	Pinus	jeffreyi	Jeffrey Pine	Fair. Suppressed.	Remove.	Connected at base to F21.

Tree #	Size	Genus	Species	Common Name	Condition	Recommendation	Additional Comments
F21	12	Pinus	jeffreyi	Jeffrey Pine	Good.	Retain. Prune limbs for roof clearance.	Connected at base to F20. Incorrectly noted as 23 inch.
F22	16	Pinus	jeffreyi	Jeffrey Pine	Fair. Suppressed.	Remove. Thin.	
F23	20	Pinus	jeffreyi	Jeffrey Pine	Good. Small circling root.	Retain. Prune limbs for roof clearance.	
F24	18	Pinus	jeffreyi	Jeffrey Pine	Good.	Retain. Prune limbs for roof clearance.	
F25	12	Pinus	jeffreyi	Jeffrey Pine	Fair. Suppressed, slight lean.	Remove.	
F26	14	Pinus	jeffreyi	Jeffrey Pine	Good.	Retain. Prune for roof clearance.	
F27	18	Pinus	jeffreyi	Jeffrey Pine	Good.	Retain. Prune for roof clearance.	
F28	14	Pinus	jeffreyi	Jeffrey Pine	Fair.	Remove.	Trunk grown into roof overhang.
F29	13	Pinus	jeffreyi	Jeffrey Pine	Good.	Remove. Thin.	
F30	24	Pinus	jeffreyi	Jeffrey Pine	Good.	Retain.	

Boulder Bay Project

Horsebook 2 Parcel (Sheet 4) APN 123-071-04

Tree #	Size	Genus	Species	Common Name	Condition	Recommendation	Additional Comments
G1	26	Pinus	jeffreyi	Jeffrey Pine	Good.	Retain.	
G2	8	Abies	concolor	White Fir	Fair. Large trunk wound on west side.	Remove.	Incorrectly noted as Pine on list.
G3	12	Abies	concolor	White Fir	Good. Trunk wound on west side.	Retain.	Incorrectly noted as Pine on list.
G4	18	Pinus	jeffreyi	Jeffrey Pine	Good.	Retain.	
G5	12	Pinus	jeffreyi	Jeffrey Pine	Good.	Retain.	
G6	12	Pinus	jeffreyi	Jeffrey Pine	Good.	Retain.	
G7	12	Pinus	jeffreyi	Jeffrey Pine	Good.	Retain.	
G8	12	Pinus	jeffreyi	Jeffrey Pine	Good.	Retain.	
G9	12	Pinus	jeffreyi	Jeffrey Pine	Good.	Retain.	
G10	7	Pinus	jeffreyi	Jeffrey Pine	Good. Suppressed.	Remove.	Incorrectly noted as 12 inch.
G11	16	Pinus	jeffreyi	Jeffrey Pine	Good.	Retain.	
G12	10	Pinus	jeffreyi	Jeffrey Pine	Good.	Retain.	
G13	8	Pinus	jeffreyi	Jeffrey Pine	Good.	Retain.	
G14	46	Pinus	ponderosa	Ponderosa Pine	Good.	Retain.	
G15	8	Pinus	jeffreyi	Jeffrey Pine	Good.	Retain.	
G16	8	Pinus	jeffreyi	Jeffrey Pine	Good.	Retain.	
G17	18	Abies	concolor	White Fir	Fair. New top attached to decaying main stem.	Remove.	
G18	8	Pinus	ponderosa	Ponderosa Pine	Good.	Retain.	
G19	12	Pinus	ponderosa	Ponderosa Pine	Good.	Retain.	
G20	18	Pinus	ponderosa	Ponderosa Pine	Good.	Retain.	
G21	32	Pinus	ponderosa	Ponderosa Pine	Good.	Retain.	
G22	10	Pinus	jeffreyi	Jeffrey Pine	Good.	Retain.	
G23	10	Pinus	jeffreyi	Jeffrey Pine	Good.	Retain.	
G24	30	Pinus	jeffreyi	Jeffrey Pine	Good.	Retain.	
G25	14	Pinus	jeffreyi	Jeffrey Pine	Fair. No top, suppressed.	Remove. Thin.	
G26	16	Pinus	jeffreyi	Jeffrey Pine	Fair. No top, suppressed. Limbs only on east side.	Remove. Thin.	
G27	8	Pinus	jeffreyi	Jeffrey Pine	Good.	Retain.	Incorrectly noted as 18 inch on plan.

Tree #	Size	Genus	Species	Common Name	Condition	Recommendation	Additional Comments
G28	20	Pinus	ponderosa	Ponderosa Pine	Good.	Retain.	
G29	28	Pinus	jeffreyi	Jeffrey Pine	Good.	Retain.	
G30	14	Pinus	jeffreyi	Jeffrey Pine	Good.	Retain.	Pitch moth damage.
G31	12	Pinus	jeffreyi	Jeffrey Pine	Fair. No top. Trunk wound on north & west sides.	Remove.	
G32	14	Pinus	jeffreyi	Jeffrey Pine	Good.	Retain.	
G33	10	Pinus	jeffreyi	Jeffrey Pine	Good.	Retain.	
G34	12	Pinus	jeffreyi	Jeffrey Pine	Good.	Retain.	
G35	8	Pinus	jeffreyi	Jeffrey Pine	Good.	Retain.	
G36	11	Pinus	jeffreyi	Jeffrey Pine	Good.	Retain.	Not on plan. Measured & numbered in field, location estimated & noted on map. Porcupine damage on upper third of trunk.

Boulder Bay Project

Horsebook 2 Parcel Offsite (Sheet 4)

Tree #	Size	Genus	Species	Common Name	Condition	Recommendation	Additional Comments
H1	21	Pinus	ponderosa	Ponderosa Pine	Fair. Double leader with one broken & decaying. Extensive number of large trunk wounds on west side. Sunken trunk at wound.	Remove.	Lean in direction of wound. Bird nesting hole.
H2	14	Pinus	jeffreyi	Jeffrey Pine	Good.	Retain.	
H3	8	Pinus	jeffreyi	Jeffrey Pine	Good.	Retain.	
H4	25	Pinus	jeffreyi	Jeffrey Pine	Good.	Retain.	
H5	22	Pinus	jeffreyi	Jeffrey Pine	Good.	Retain.	
H6	10	Abies	concolor	White Fir	Good.	Retain.	
H7	17	Pinus	ponderosa	Ponderosa Pine	Good. Suppressed.	Remove. Thin.	Topped, pruned for utility line clearance.
H8	19	Pinus	ponderosa	Ponderosa Pine	Good. Suppressed.	Retain.	Topped, pruned for utility line clearance.
H9	18	Pinus	ponderosa	Ponderosa Pine	Good. Suppressed.	Remove. Thin.	Topped, pruned for utility line clearance.
H10	38	Pinus	ponderosa	Ponderosa Pine	Good. Suppressed.	Retain.	Topped, pruned for utility line clearance.
H11	10	Pinus	ponderosa	Ponderosa Pine	Fair. Suppressed.	Remove.	
H12	8	Pinus	ponderosa	Ponderosa Pine	Fair.	Remove.	Topped, pruned for utility line clearance.
H13	20	Pinus	ponderosa	Ponderosa Pine	Good.	Retain.	Pruned for utility line clearance.

Boulder Bay Project

Fire Station Parcel (Sheet 4) APN 123-053-04

Tree #	Size	Genus	Species	Common Name	Condition	Recommendation	Additional Comments
I1	24	Pinus	jeffreyi	Jeffrey Pine	Good.	Retain. Remove wood nailed into trunk.	
I2	15	Pinus	jeffreyi	Jeffrey Pine	Good.	Retain.	
I3	20	Pinus	jeffreyi	Jeffrey Pine	Good.	Retain.	
I4	25	Pinus	jeffreyi	Jeffrey Pine	Good.	Retain.	
I5	21	Pinus	jeffreyi	Jeffrey Pine	Good.	Retain.	
I6	19	Pinus	jeffreyi	Jeffrey Pine	Good. Old trunk wound on west side.	Retain.	
I7	25	Pinus	jeffreyi	Jeffrey Pine	Good.	Retain.	
I8	20	Pinus	jeffreyi	Jeffrey Pine	Good.	Retain.	
I9	10	Pinus	jeffreyi	Jeffrey Pine	Good.	Retain.	

Boulder Bay Project

Biltmore Parking Parcel (Sheet 2) APN 123-053-02

Tree #	Size	Genus	Species	Common Name	Condition	Recommendation	Additional Comments
J1	12	Pinus	jeffreyi	Jeffrey Pine	Good.	Retain. Prune limbs for roof clearance.	
J2	44	Pinus	ponderosa	Ponderosa Pine	Good.	Retain. Remove electrical.	
J3	36	Pinus	jeffreyi	Jeffrey Pine	Good.	Retain. Remove electrical & light fixture.	
J4	40	Pinus	jeffreyi	Jeffrey Pine	Stump.	N/A	Previously removed.
J4A	8	Abies	concolor	White Fir	Good.	Retain. Prune for roof clearance.	Not on plan. Measured & numbered in field, location estimated & noted on map.
J5	6	Pinus	jeffreyi	Jeffrey Pine	Good.	Retain.	
J6	13	Pinus	jeffreyi	Jeffrey Pine	Good.	Retain.	
J7	8	Pinus	jeffreyi	Jeffrey Pine	Good. Suppressed.	Remove. Thin.	
J8	8	Pinus	jeffreyi	Jeffrey Pine	Good.	Retain.	
J8A	7	Pinus	jeffreyi	Jeffrey Pine	Fair.	Remove. Thin.	Not on plan. Measured & numbered in field, location estimated & noted on map.
J9	22	Pinus	jeffreyi	Jeffrey Pine	Good. Old trunk wound on northeast side.	Retain. Remove electrical.	
J10	38	Pinus	jeffreyi	Jeffrey Pine	Good.	Retain.	
J11		Pinus	jeffreyi	Jeffrey Pine	Good. Old trunk wound on north side.	Retain. Remove wood nailed into tree.	
J12	39	Pinus	jeffreyi	Jeffrey Pine	Good. Old basal wound on south side.	Retain.	
J13	20	Pinus	jeffreyi	Jeffrey Pine	Fair. Extensive trunk wounds on north & east side.	Remove.	Tree leans to north.
J14	26	Pinus	jeffreyi	Jeffrey Pine	Good.	Retain.	
J15	23	Pinus	jeffreyi	Jeffrey Pine	Good.	Retain.	

Boulder Bay Project

Biltmore Parking Parcel Offsite (Sheet 2)

Tree #	Size	Genus	Species	Common Name	Condition	Recommendation	Additional Comments
K1	11	Pinus	jeffreyi	Jeffrey Pine	Good.	Retain. Remove rock at base on northeast side.	
K2	7	Pinus	jeffreyi	Jeffrey Pine	Good.	Retain.	
K3	10	Pinus	jeffreyi	Jeffrey Pine	Good.	Retain.	

Boulder Bay Project

Crystal Bay Motel (Sheet 3) APN 123-042-01

Tree #	Size	Genus	Species	Common Name	Condition	Recommendation	Additional Comments
L1	13	Pinus	jeffreyi	Jeffrey Pine	Fair.	Remove.	Topped for utility line clearance.
L2	23	Pinus	jeffreyi	Jeffrey Pine	Good. Old small basal wound on north side.	Retain.	
L3	32	Pinus	jeffreyi	Jeffrey Pine	Good.	Remove electrical.	
L4	39	Pinus	jeffreyi	Jeffrey Pine	Good. Old basal wound on east side.	Remove. Remove electrical & light fixture.	Old lightning strike on east side.
L5	16	Pinus	jeffreyi	Jeffrey Pine	Good. Small trunk wounds on north side	Retain.	
L6	10	Abies	concolor	White Fir	Good. Suppressed.	Remove. Thin.	
L7	15	Abies	concolor	White Fir	Good. Dead top.	Remove. Thin.	Grown together at base.
L8	7	Abies	concolor	White Fir	Fair.	Remove. Thin.	
L9	15	Abies	concolor	White Fir	Good. Suppressed.	Retain	
L10	13	Abies	concolor	White Fir	Fair. Very suppressed, no top.	Remove.	
L11	14	Abies	concolor	White Fir	Good. Suppressed.	Remove. Thin.	
L12	16	Pinus	jeffreyi	Jeffrey Pine	Good. Suppressed.	Retain.	
L13	10	Abies	concolor	White Fir	Good.	Retain.	
L14	18	Abies	concolor	White Fir	Good. Suppressed	Retain.	
L15	7	Abies	concolor	White Fir	Good.	Retain.	
L16	10	Pinus	jeffreyi	Jeffrey Pine	Fair. Suppressed.	Remove. Thin.	Incorrectly noted as Fir on list.
L17	15	Abies	concolor	White Fir	Dead.	Remove.	
L18	15	Pinus	jeffreyi	Jeffrey Pine	Good. Small trunk wounds on northwest side.	Retain.	
L19	21	Pinus	jeffreyi	Jeffrey Pine	Good.	Retain.	

Tree #	Size	Genus	Species	Common Name	Condition	Recommendation	Additional Comments
L20	21	Pinus	jeffreyi	Jeffrey Pine	Good. Small basal wound on northwest side.	Retain. Remove light fixture & electrical.	
L21	24	Pinus	jeffreyi	Jeffrey Pine	Good.	Retain.	
L22	22	Pinus	jeffreyi	Jeffrey Pine	Fair. Large trunk wound on northwest side.	Remove.	Strong lean in northwest direction.
L23	8	Populus	tremuloides	Aspen	Fair.	Remove.	Embedded in fence. Strong lean over adjacent parking lot. Incorrectly noted as Alder on list.
L23A	10	Populus	tremuloides	Aspen	Good.	Retain. Prune for roof overhang clearance.	Incorrectly noted as L1 on map, L1 previously used.
L23B	8	Prunus	cerasifera	Purple Leaf Plum	Fair.	Retain. Prune for roof overhang clearance. Remove smaller stem embedded in fence.	Not on plan. Measured & numbered in field, location estimated & noted on map.
L24	18	Calocedrus	decurrens	Incense Cedar	Good.	Retain.	
L25	33	Pinus	jeffreyi	Jeffrey Pine	Good.	Retain.	Sapsucker bird injury.
L26	10	Abies	concolor	White Fir	Dead.	Remove.	
L27	24	Pinus	jeffreyi	Jeffrey Pine	Good.	Retain.	
L28	22	Pinus	jeffreyi	Jeffrey Pine	Good.	Retain.	
L29	6	Pinus	jeffreyi	Jeffrey Pine	Poor.	Remove.	
L30	20	Pinus	jeffreyi	Jeffrey Pine	Fair. Double leader.	Remove.	Embedded dead previous top.
L31	14	Pinus	jeffreyi	Jeffrey Pine	Good.	Retain.	
L32	18	Pinus	jeffreyi	Jeffrey Pine	Good.	Retain.	Sapsucker bird injury.
L33	11	Pinus	jeffreyi	Jeffrey Pine	Poor.	Remove.	No top.

Boulder Bay Project

Crystal Bay Motel Offsite (Sheet 3)

Tree #	Size	Genus	Species	Common Name	Condition	Recommendation	Additional Comments
M1	18	Calocedrus	decurrens	Incense Cedar	Fair. Severe trunk wound on north side.	Remove.	Strong lean away from wound.
M2	18	Pinus	jeffreyi	Jeffrey Pine	Fair. Multiple leaders.	Remove.	
M3	10	Pinus	jeffreyi	Jeffrey Pine	Fair.	Remove.	Topped for utility line clearance.
M4	11	Pinus	jeffreyi	Jeffrey Pine	Fair.	Remove.	Topped for utility line clearance.
M5	24	Pinus	jeffreyi	Jeffrey Pine	Good. Old basal wound on northwest side.	Retain.	
M6	20	Pinus	jeffreyi	Jeffrey Pine	Good. Small old trunk wound on northeast side.	Retain.	Extensive sapsucker bird injury.
M7	7	Pinus	jeffreyi	Jeffrey Pine	Poor.	Remove.	No top.
M8	17	Pinus	jeffreyi	Jeffrey Pine	Fair. Suppressed, dead top embedded in trunk, new top developed.	Remove.	
M9	22	Pinus	jeffreyi	Jeffrey Pine	Good. Double leader with embedded bark.	Retain.	
M10	25	Pinus	jeffreyi	Jeffrey Pine	Good.	Retain.	

Boulder Bay Project

Nugget Casino Parcel (Sheet 3) APN 123-042-12

Tree #	Size	Genus	Species	Common Name	Condition	Recommendation	Additional Comments
N1	6	Populus	tremuloides	Aspen	Fair. Bacterial wetwood disease.	Remove from plan.	Measured in field; 5 inch tree incorrectly noted on plan as 6 inch. Incorrectly noted as Alder on list.
N2	6	Populus	tremuloides	Aspen	Good.	Retain.	Incorrectly noted as Alder on list.
N3	10	Prunus	cerasifera	Purple Leaf Plum	Good. Poor structure, wounds on southwest side of trunk & branch.	Retain.	Incorrectly noted as Alder on plan.
N4	12	Prunus	cerasifera	Purple Leaf Plum	Good. Poor structure.	Retain. Remove strap & come along.	Incorrectly noted as Alder on plan.
N5	40	Sequoiadendron	giganteum	Giant Sequoia	Good.	Retain.	Incorrectly noted as Cedar on plan.

Boulder Bay Project

Nugget Casino Parcel Offsite (Sheet 3)

Tree #	Size	Genus	Species	Common Name	Condition	Recommendation	Additional Comments
O1	6	Calocedrus	decurrens	Incense Cedar	Good.	Retain.	Remove stakes & ties embedded in trunk.
O2	6	Calocedrus	decurrens	Incense Cedar	Good.	Retain.	Remove stakes & ties embedded in trunk.