

# TRPA Legal Committee

*August 26, 2020*

## **AGENDA ITEM 4**

Show Cause Hearing; Mountain Addiction LLC;  
Justin Sheaff; Unauthorized Tree Removal,  
California Tahoe Conservancy Property, Place  
County, California, APNs 092-010-021 and 092-  
010-035

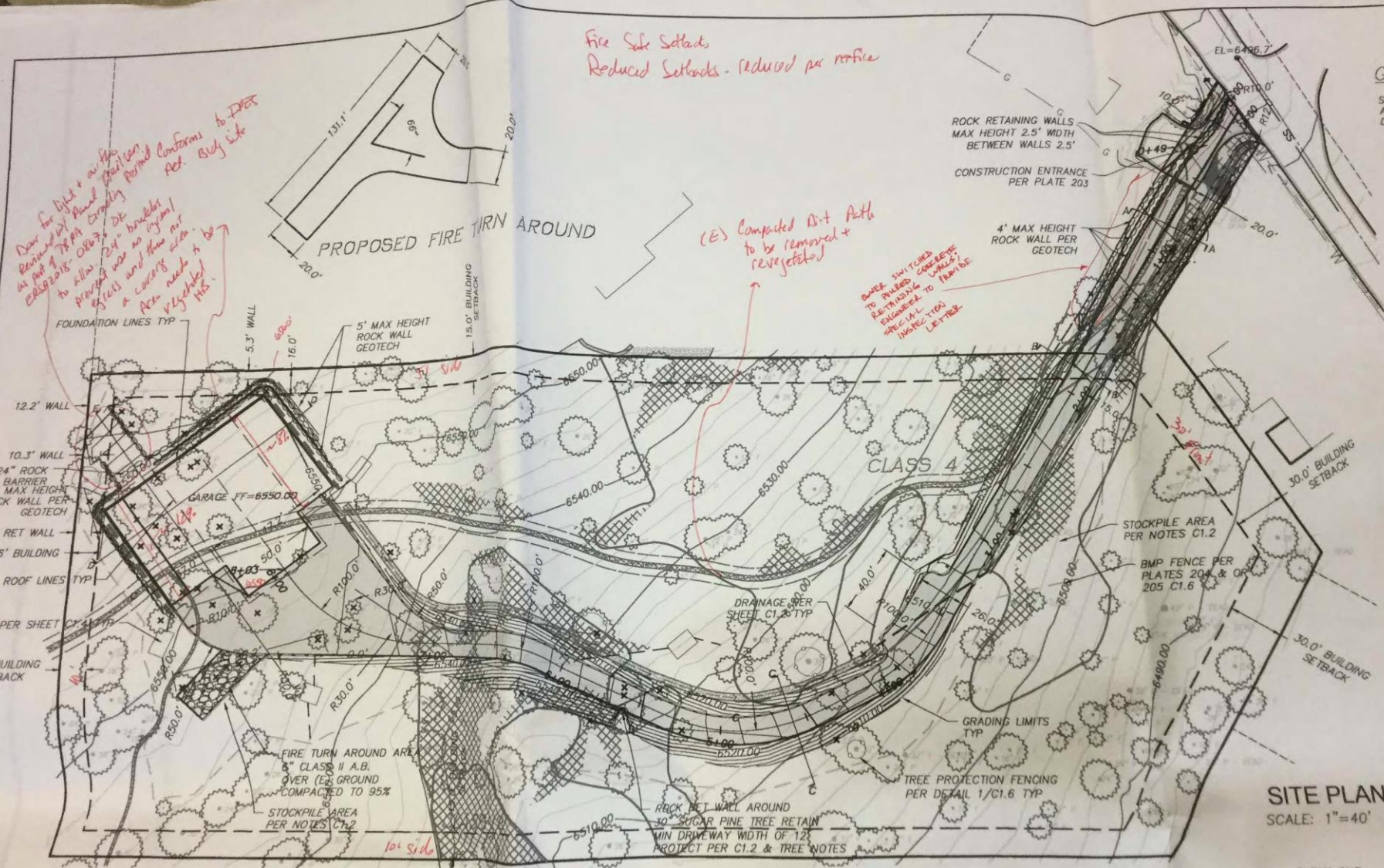
# TRPA Legal Committee

*August 26, 2020*

Agenda Item 4

## **STAFF PRESENTATION**

Show Cause Hearing; Mountain Addiction LLC; Justin Sheaff; Unauthorized Tree Removal, California Tahoe Conservancy Property, Place County, California, APNs 092-010-021 and 092-010-035



*Down for Dist + a/c for Rainwater. As part of TMA, existing easements allow for 24" barrier to allow use as a road for events and then not a concern. Per note to be vegetated.*

*Fire Safe Setback Reduced Setbacks - reduced per notice*

*(E) Compacted D+ Path to be removed + revegetated*

*SWER SWITCHES TO PREPARE CONCRETE RETAINING WALLS. SPECIAL INSTRUCTIONS LETTER*

**GEOTECH**  
SEE GEOTECH ALL SOILS DRAINAGE

**ALL**  
AR  
IP  
S  
C  
C  
**EX**

**SITE PLAN**  
SCALE: 1"=40'

**MAIN ROAD TO SHOP PROFILE**

Station	Offset	Point	Elevation
SSMH #1			
STA: 7+69.99	OFF: -23.34L		
		RIM:	6549.01
		SUMP:	6539.35
		INV IN:	6539.45 4"
		INV IN:	6539.45 4"
		INV IN:	6539.45 4"
		INV OUT:	6539.35 4"
		CLEAN OUT	
		STA: 7+71.17	OFF: -69.26L
			RIM: 6549.66
			SUMP: 6545.66
			INV OUT: 6545.66 4"
			45.95' of 4" @ 13.52%

6552  
6548

PV STA: 6+88.48  
PV ELEV: 6544.04  
K: 12.50  
LVS: 60.00

6.00%

C.1.1



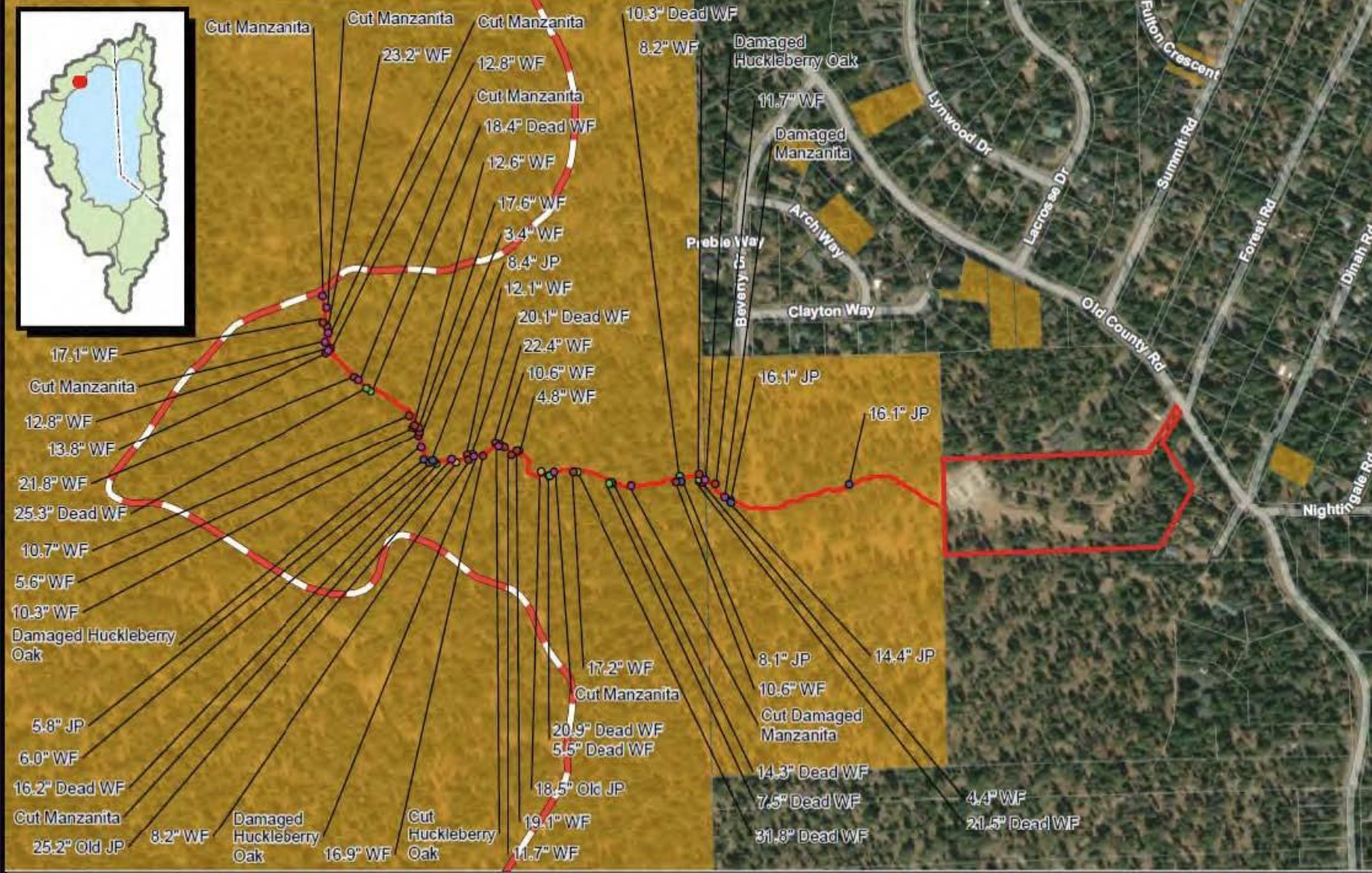
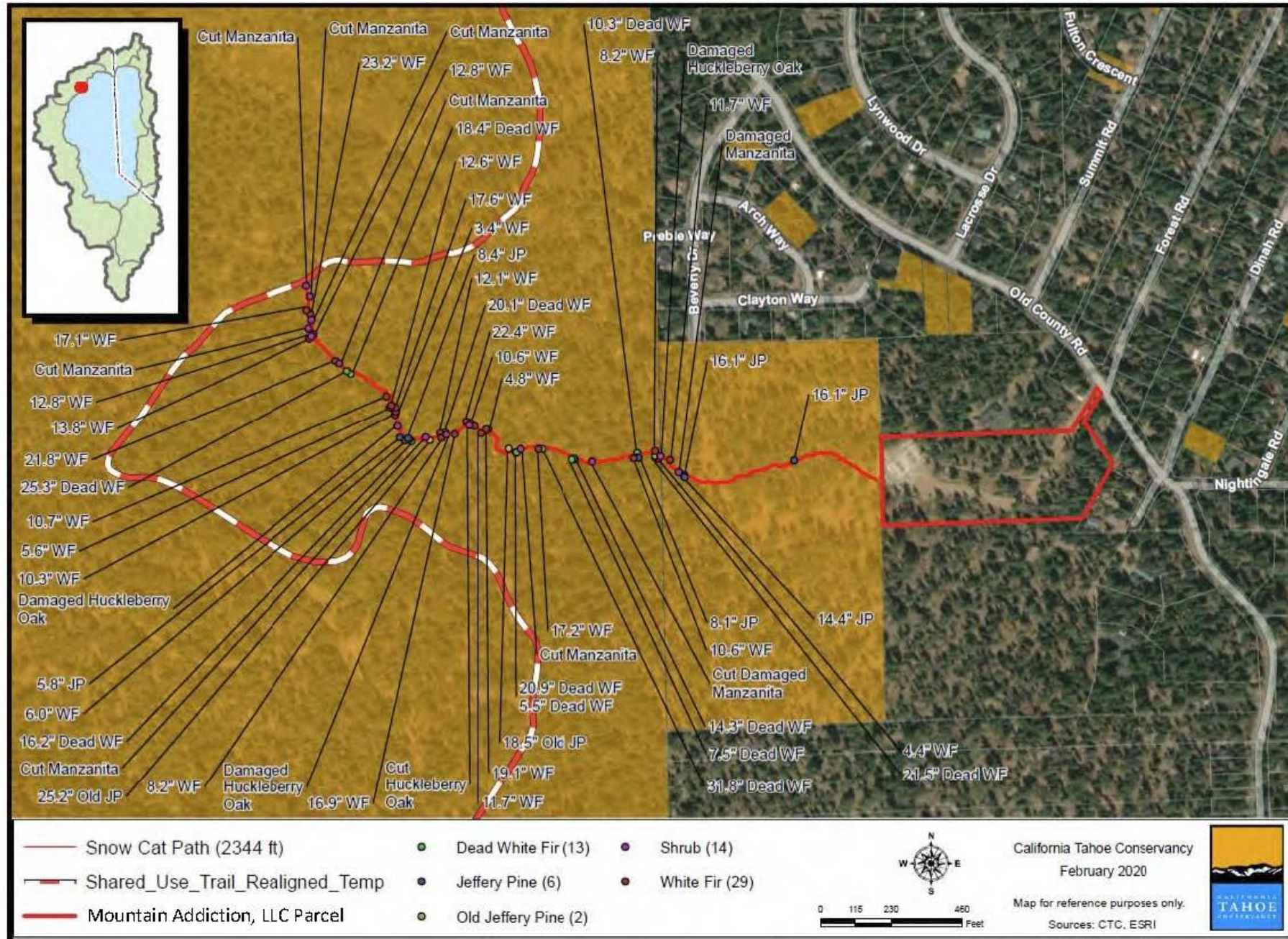
C.1.2



C.2.1



# Conservancy Resource Damage



C.22





C.2.3



C.2.4



C.2.5



C.2.6



C.2.7



C.2.8



C.2.9



C.2.10





C.2.11



C.2.12



C.2.13



C.2.14



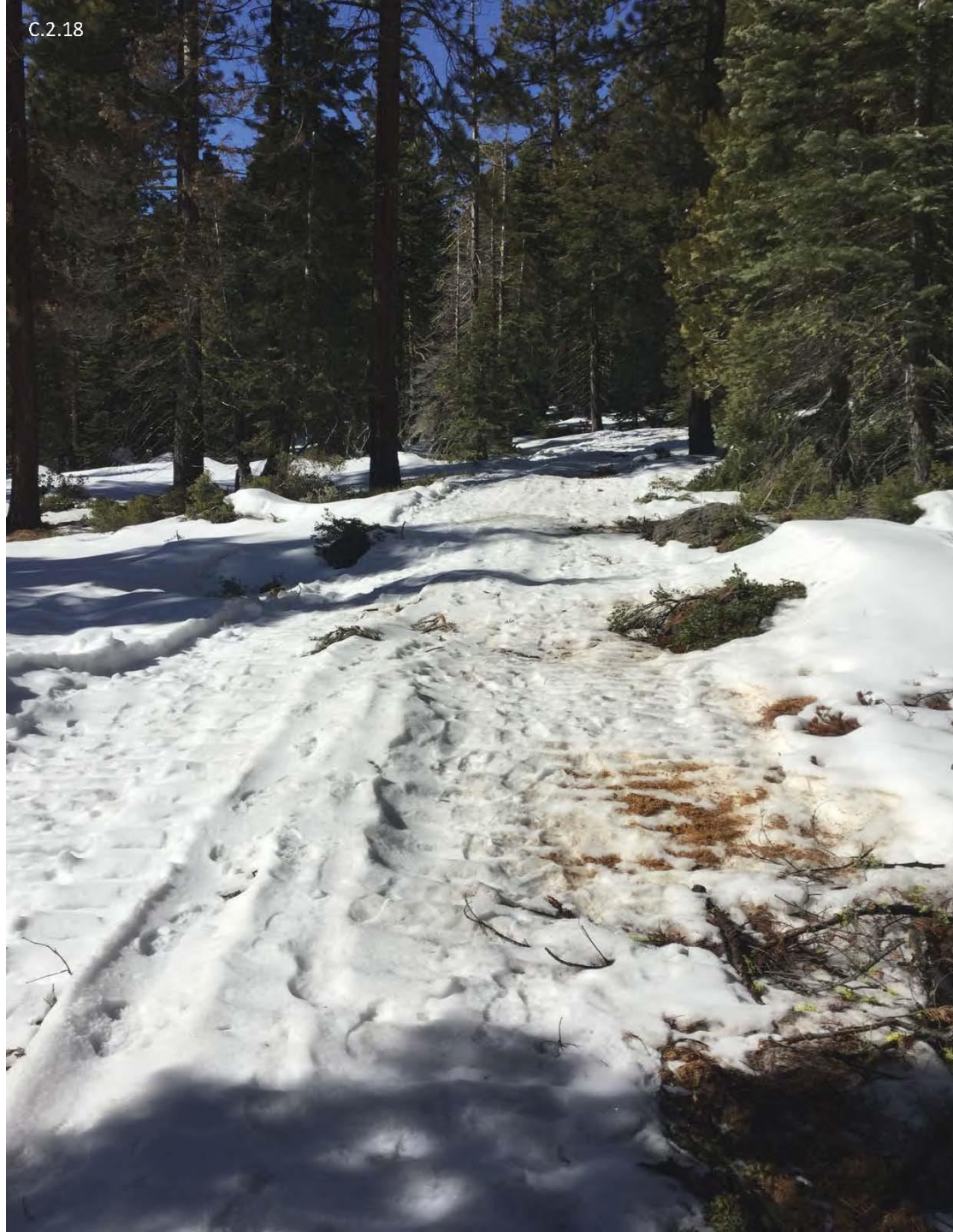
C.2.15



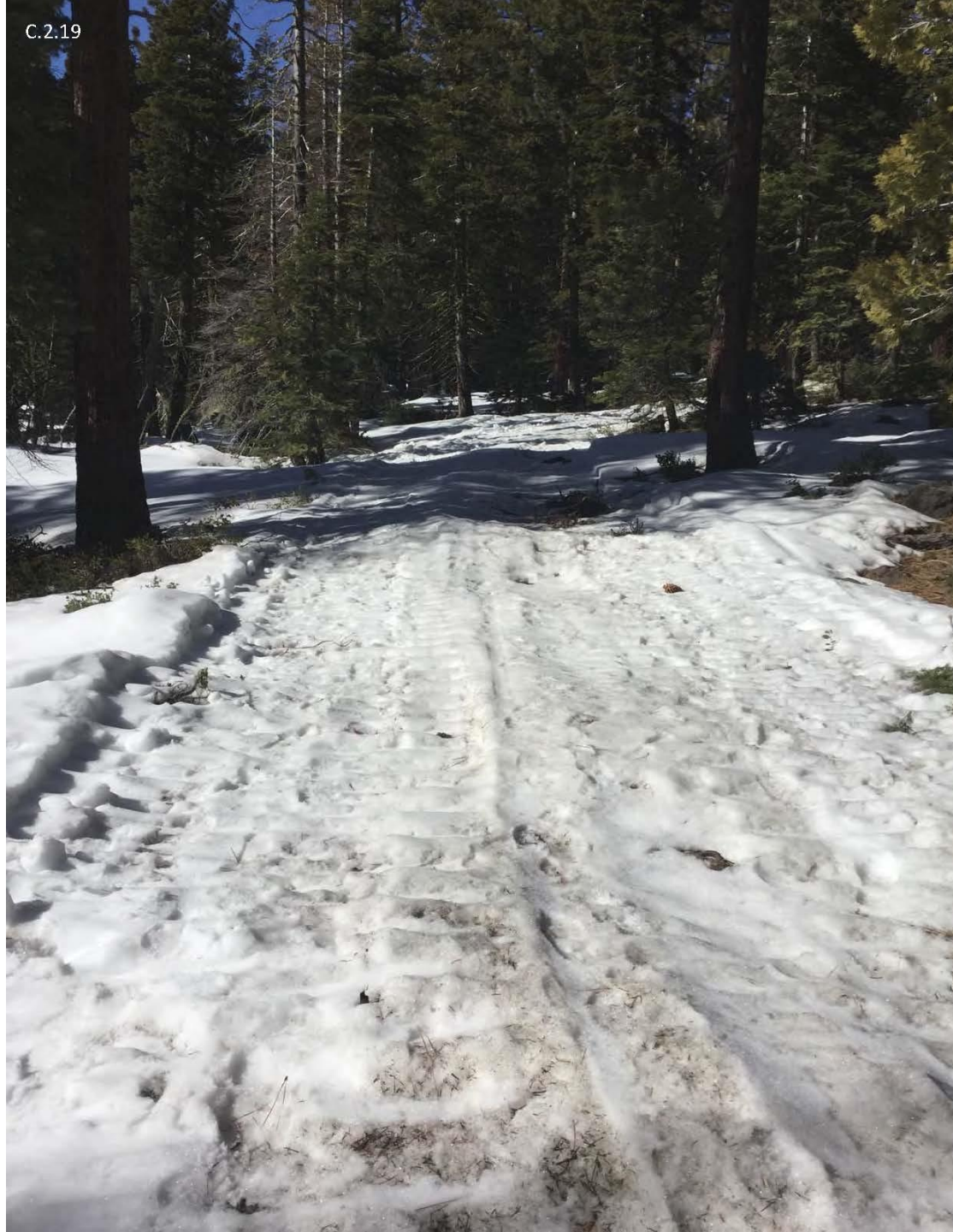
C.2.16













C.2-21



C.2.22



C.2.23



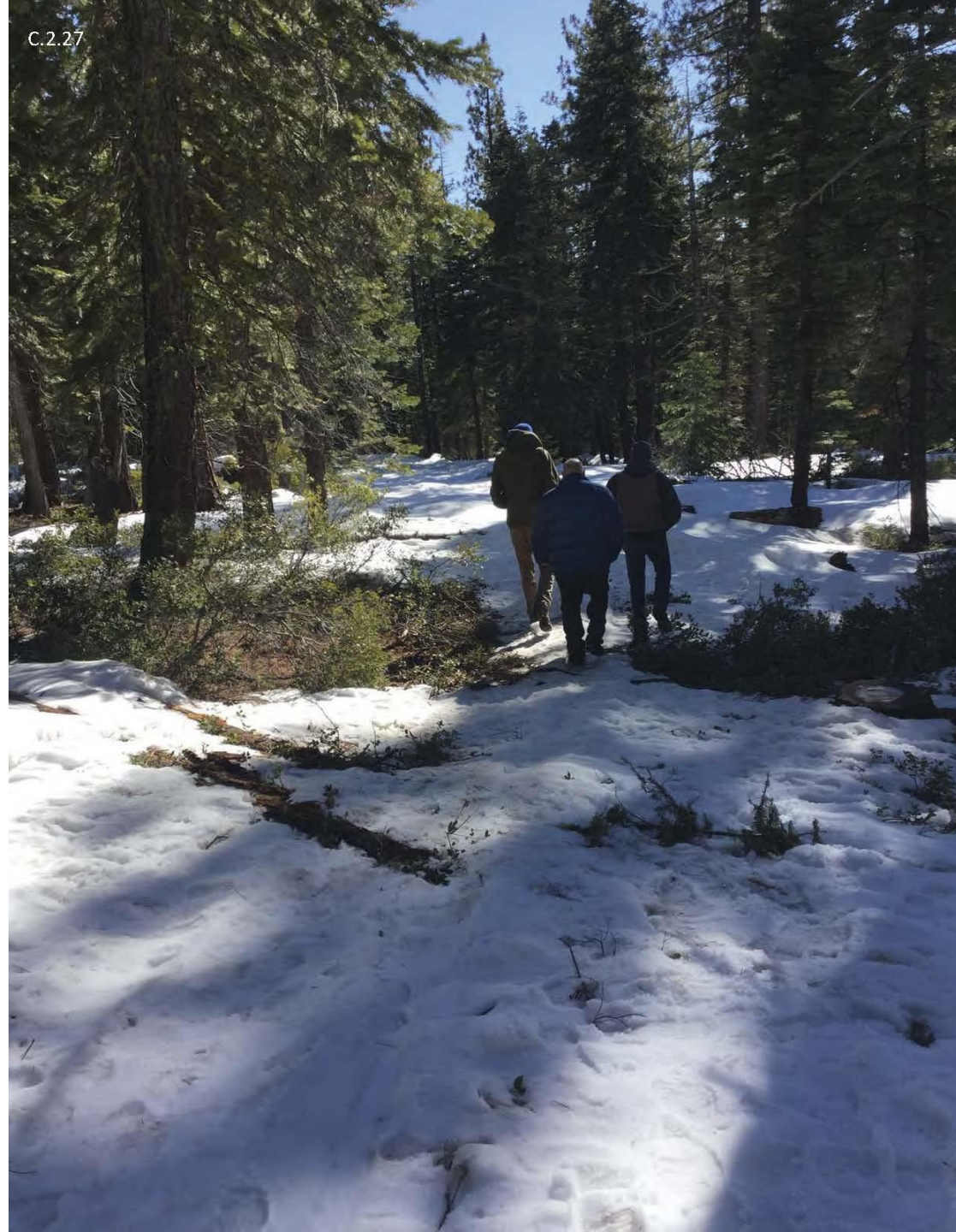
C.2.24











C.2.28



C.2.36



C.2.38



C.2.40



C.2.41





C.2.44





C.2.48



2020-06-10 13:25



2020-08-10 13:32



2019-06-10 13:35



2020-06-10 13:43











2020-06-13 14:1





2020-06-10 14:3



2023-06-10 14:4





2023-06-10 14:8



2019-05-24 14:41  
C.3.23



2021-06-10 14:16







2020-06-10 14:30





2020-06-10 AM 50



2021-06-10 14:31



2020-06-10 14:33



2020-06-10 14:35

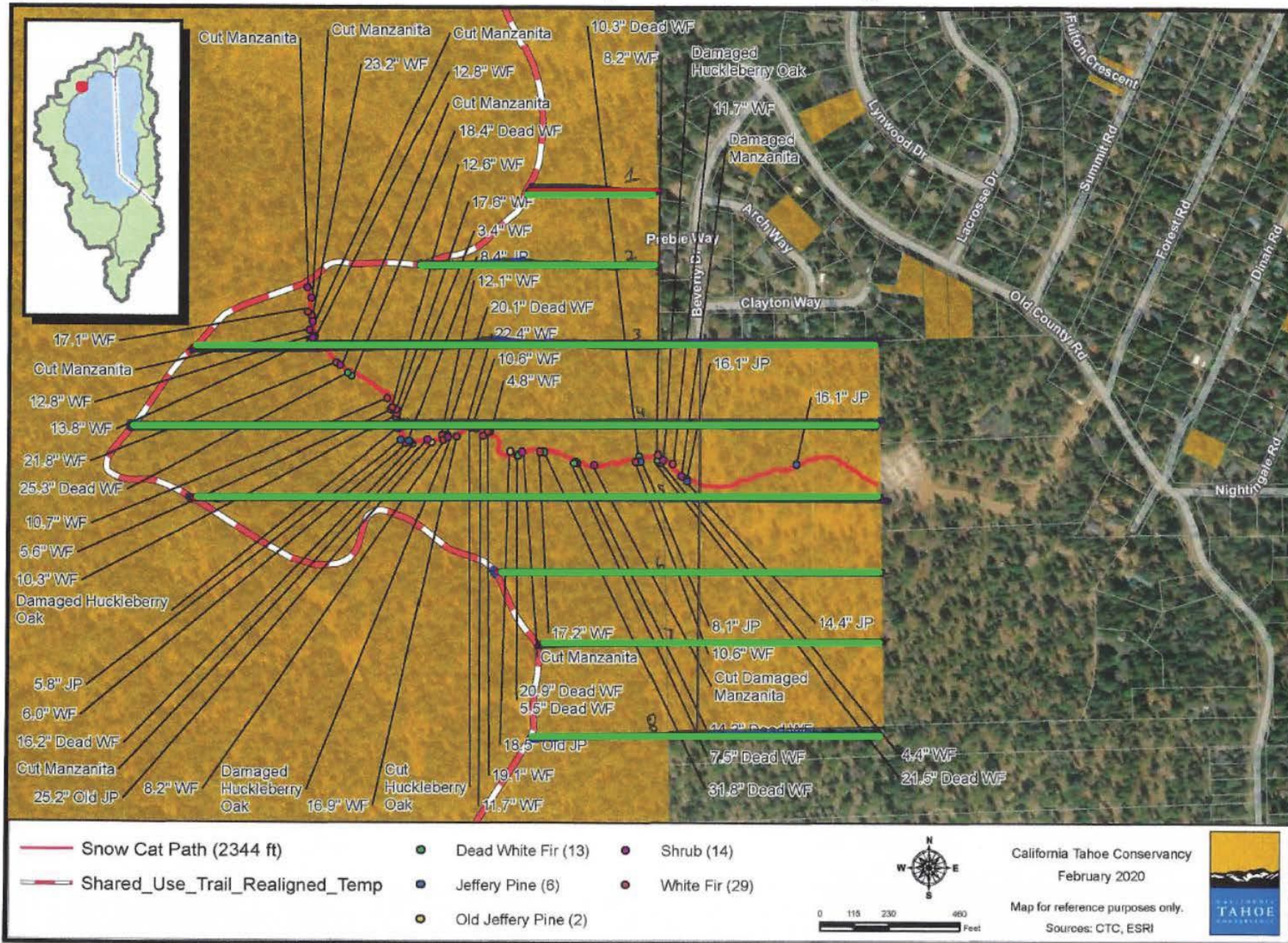


2020-06-10 14:49





# Conservancy Resource Damage



# TRPA Legal Committee

*August 26, 2020*

Agenda Item 4

## **MOUNTAIN ADDICTION LLC PRESENTATION**

Show Cause Hearing; Mountain Addiction LLC; Justin Sheaff; Unauthorized Tree Removal, California Tahoe Conservancy Property, Placer County, California, APNs 092-010-021 and 092-010-035











































# TRPA Legal Committee

*August 26, 2020*

## AGENDA ITEM 4

# Committee Member Comments

# TRPA Legal Committee

*August 26, 2020*

Agenda Item 4

## **PUBLIC COMMENT**



Show Cause Hearing; Mountain Addiction LLC;  
Justin Sheaff; Unauthorized Tree Removal,  
California Tahoe Conservancy Property, Place  
County, California, APNs 092-010-021 and 092-010-  
035

# TRPA Legal Committee

*August 26, 2020*

Agenda Item 4

## **STAFF REBUTTAL AND FINAL RECOMMENDATION**

Show Cause Hearing; Mountain Addiction LLC; Justin Sheaff; Unauthorized Tree Removal, California Tahoe Conservancy Property, Placer County, California, APNs 092-010-021 and 092-010-035



# TRPA Legal Committee

*August 26, 2020*

## Agenda Item 4

# Committee Deliberation



