

RESORT TRIANGLE TRANSPORTATION DISCUSSION GROUP
April 2nd, 2019
Minutes

CALL TO ORDER

The meeting was called to order at 9:00am at the Truckee Town Hall conference room.

INTRODUCTIONS

Meeting attendees introduced themselves and noted their group affiliation.

ATTENDEES

Jenny Roberts, North Tahoe Family Resource Center
Hilary Bayliss, Placer County Public Health
Michael Tipoff, Placer County Health & Human Services
Julia Tohlen, TNT/TMA
Kelly Beedee, Town of Truckee Transit
Tara Styer, Tahoe Transportation District
Daniella Fernandez, 211 Connection Point Grass Valley
Kimberly Whittington, Choices
Kira Smith, TRPA
Lizzy Henasey, Tahoe Forest Hospital
Ann Verick, Community Collaborative
Alison Schwedner, Community Collaborative

ON THE PHONE

Will Garner, Placer County Public Works
Mike Woodman, Nevada County Transportation Commission
Kathleen Hanley, Placer County Transportation Planning Agency

PRESENTATION & DISCUSSION

At the end of 2017, North Tahoe transportation partners and the Community Collaborative decided to begin meeting quarterly to discuss transportation and mobility needs in North Tahoe and Truckee.

1. 2019 Coordinated Human Services Transportation Plan DRAFT – Kira Smith, TRPA

TRPA has recently completed an update to the Coordinated Human Services Transportation Plan. Presentation attached.

DISCUSSION:

- TTD is conducting a study, ONE TAHOE, to identify a secure regional revenue source for mobility projects and transit operations. We need a flexible funding source for the entire Tahoe Region (including Truckee).
- Nevada County will be working on updating their Coordinated Plan soon. They are currently waiting on grant funding to complete the Plan. They'll be focusing on needs within Truckee and coordination between Nevada County and Placer County.
- Need more direct access to the KidZone and Family Resource Center in Truckee. Closest bus stop is at Wild Cherries Coffee House, but there are a lot of families who need more direct access.

- Truckee TART is a fare-free system as of July 1st, 2018. Ridership has increased over 30 percent. Dial-a-ride (door-to-door) service is also completely free for ADA eligible passengers who need to apply for eligibility. Placer County working out how to provide free transit for the rest of the TART system.
- Should work with employers in the Region to organize vanpools for their employees to/from Reno.
- Need more access to Sierra College in Truckee. Truckee TART is looking at expanding night service within Truckee and to the Resorts.
- TART just completed their budget for the next fiscal year and has allocated money to purchase a replacement paratransit vehicle.
- At the last meeting (October 2, 2018), clients who attended the Choices program in Truckee asked for cross jurisdictional transportation from Placer County to the program in Nevada County. Placer County TART met the need and began providing the service two weeks later.

2. Bike Share in North Tahoe/Truckee: Docking vs. Dockless

TNT/TMA hosted a meeting to discuss potential bike share options in North Tahoe and Truckee. Zagster, a docking bike share system, currently operates in Truckee and there are several docking stations throughout the Town. Regional partners decided it makes more sense to pursue a docking system for the area. The TMA will be hosting another meeting to hear presentations from Lime and Zagster. The TMA hopes to partner with either organization before they expand to the area.

3. Update on Truckee Transit Center

The transit center in Truckee is currently at capacity. The Town of Truckee received a grant through SB1 to look at options relocate the transit center. There will be several opportunities for the community to participate and provide input.

More information available at truckeetransitcenter.com

4. Update on Youth Bus Pass for Summer 2019

TART will offer free bus passes for youth again for the Summer of 2019.

NEXT STEPS AS A COLLECTIVE:

1. The 2019 Coordinated Human Services Transportation Plan for the Lake Tahoe Region is available for public comment through April 12th. A link to the Plan will be included in the CCTT Bulletin. Members will review the Plan and send comments to Kira Smith.
2. Transportation Focus Group meetings will continue either quarterly or three times per year. Alison and Kira will work on a schedule for the next year and notify the group.

ADJOURNMENT

The meeting was adjourned at 10:00am.

Coordinated Human Services Transportation Plan

DRAFT March 2019

Presentation for: Resort Triangle
Transportation Focus Group

April 9, 2019

Elements of the Plan

1. Plan Requirements
2. Plan Review
3. Existing Conditions
4. Demographic Analysis and Needs Assessment
5. Public Participation and Stakeholder Outreach
6. Project Recommendations

Plan Purpose and Requirements

- Identify transportation needs of individuals with disabilities, seniors, and people with low incomes
- Provide strategies to meet those needs
- Must include:
 - Assessment of current transportation options
 - Assessment of needs
 - Strategies to fill gaps
 - Priorities for implementation

2014 Coordinated Plan

1. Lack of non-emergency medical transportation to access resources and services outside the Region
2. Lack of regional demand-responsive service
3. Lack of sufficient year-round fixed route transit



Existing Conditions (TTD)

- **Fixed Routes:**

- Route 22 to Minden/Gardnerville
- Route 19x to Carson City
- Route 50 local
- Route 55 local

- **Paratransit:**

- Baseline zone: \$3.00 fare within one-mile of fixed routes
- Extended zone: \$6.00 fare beyond one-mile

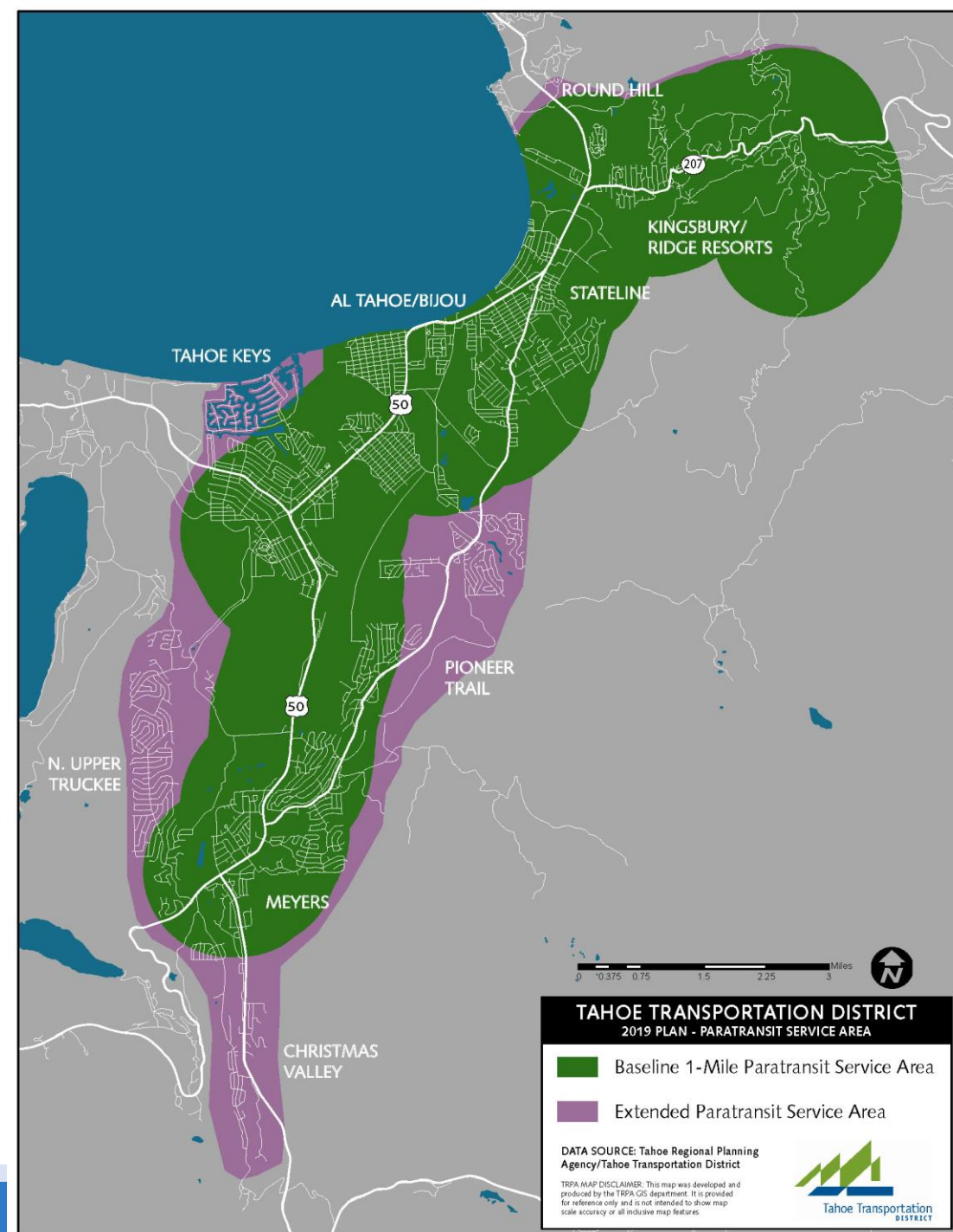
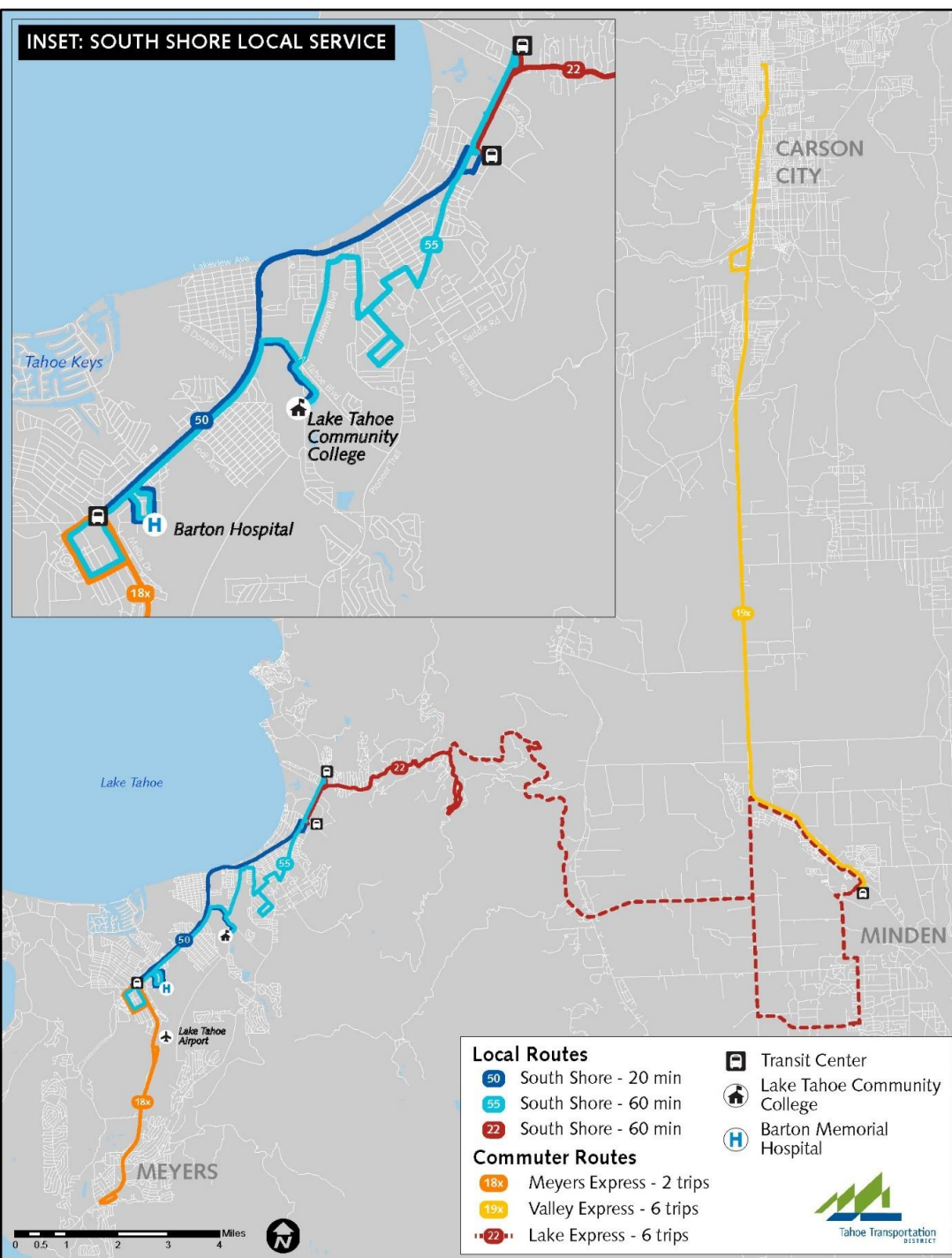
- **Specialized Services:**

- SLT-STS recently discontinued
- NTTT recently discontinued
- Mobility Manager position eliminated

*18x to Meyers recently discontinued

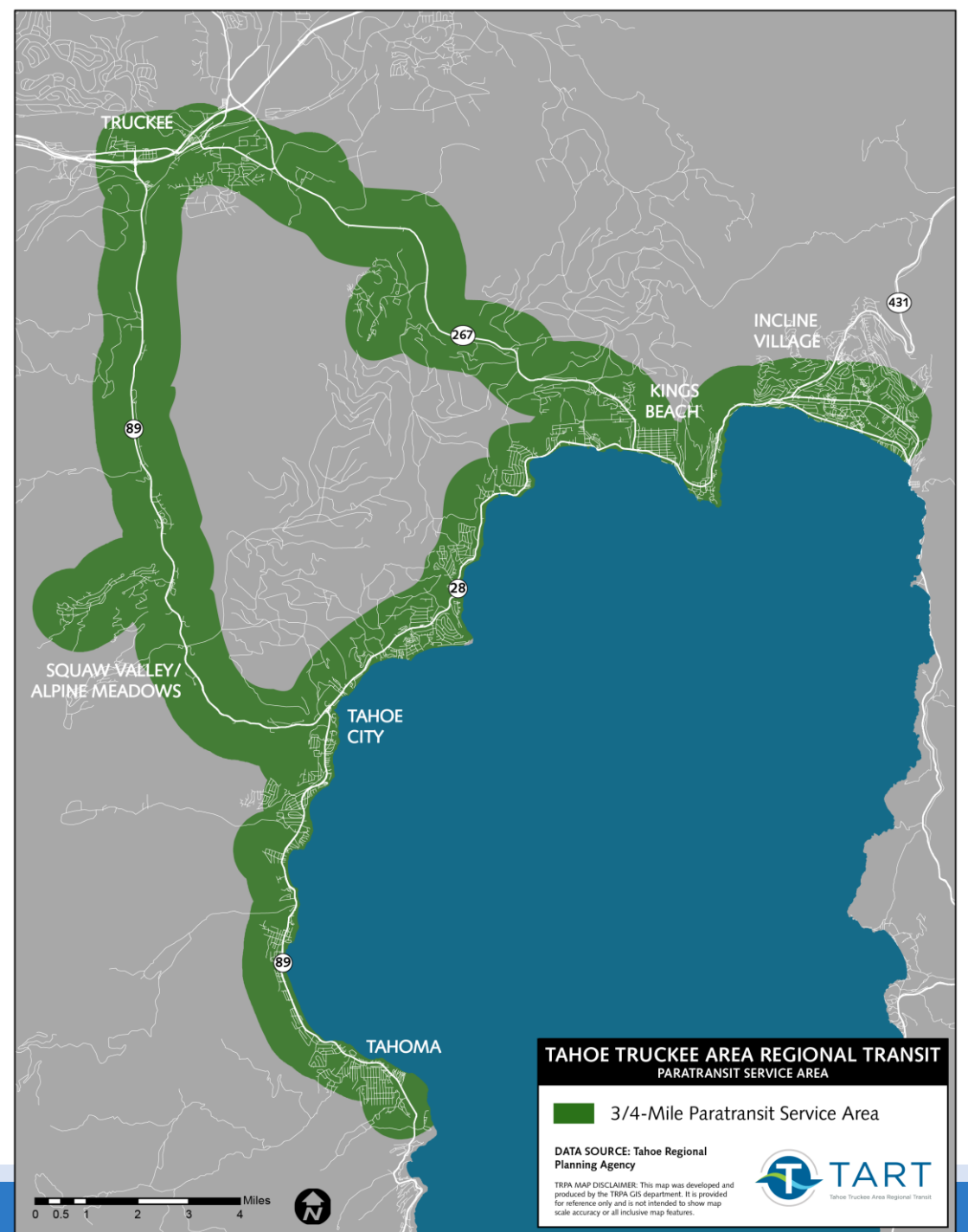
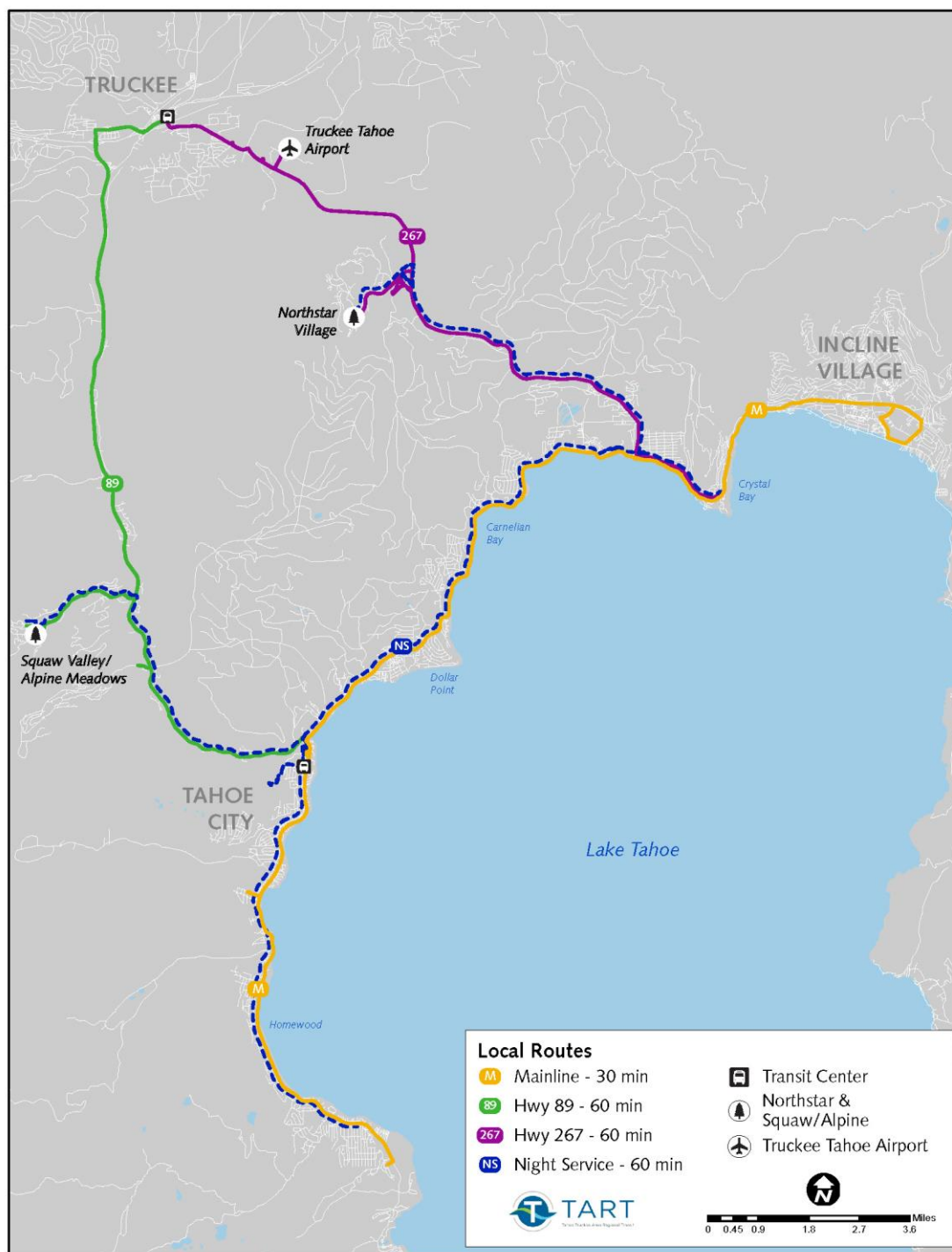


INSET: SOUTH SHORE LOCAL SERVICE



Existing Conditions (TART)

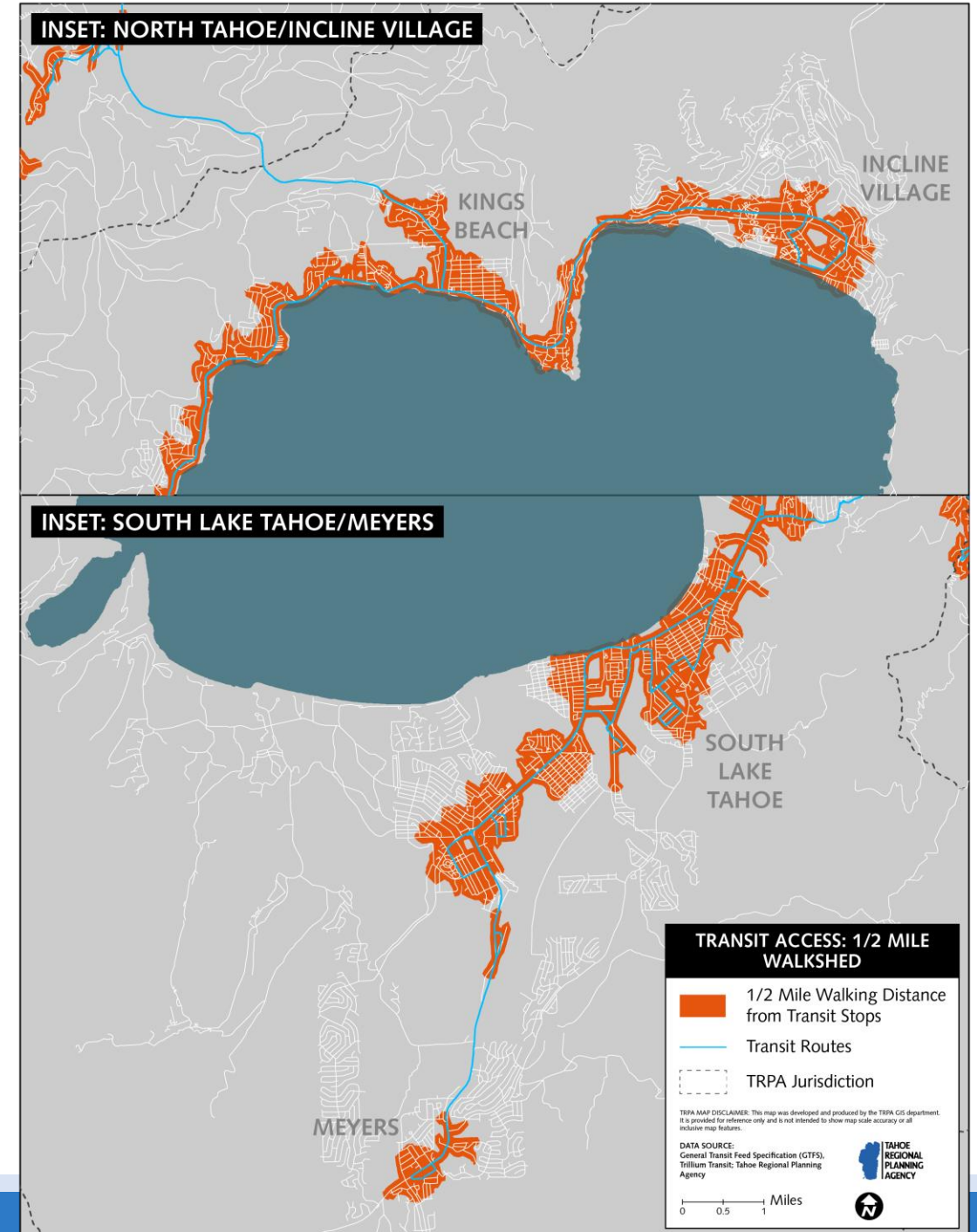
- **Fixed Routes:**
 - Mainline Route
 - Hwy 89 Route
 - Hwy 267 Route
 - Night Rider
- **Paratransit:**
 - Within $\frac{3}{4}$ mile of existing fixed routes. Cross-jurisdictional service now available.





Walkshed

- Assessing walkability from transit stops is one measure of transit access
- Analyzes walkability within one-half mile of transit stops along the street network



Demographic Analysis

- Conducted demographic analysis of transit dependent populations:
 - Households without Private Transportation (ZVH)
 - Seniors
 - Low-Income Populations
 - Individuals with a Disability
 - Minority Populations (Latino/Hispanic, Black, Asian, American Indian, Pacific Islander, Other Not White, Two or More Races)

Demographic Analysis: Key Findings

- Limited frequency and service span in some high-density neighborhoods (Incline Village)
- Lack of service for travelers to/from Reno and Carson
- Insufficient out-of-area service for non-emergency medical needs
 - Limited flexibility with previous services
- Need greater coverage in low-income and ZVH neighborhoods
- Secure funding for paratransit services

Public Participation

- 2018 Unmet Transit Needs
- South Tahoe SSTAC
- North Tahoe SSTAC
(*Gathering input today!)



HOW CAN PUBLIC TRANSIT MEET YOUR MOBILITY NEEDS?

The Tahoe Regional Planning Agency invites you to share your comments on unmet transit needs in the Lake Tahoe Region.

Information Booth

Friday, November 9, 4:00-6:00 p.m.
Stateline Road/Crystal Bay TART Stop
Crystal Bay, NV 89402



Please share your feedback with us:

ksmith@trpa.org or (775) 589-5236

www.surveymonkey.com/r/2018TransitNeeds

TRPA • PO Box 5310 • Stateline, NV 89449

¿CÓMO SE PODRÍA MEJORAR EL SISTEMA DE TRANSPORTE?

La TRPA le invita a comentar sobre lo que se requiere para mejorar el transporte público en la Región de Tahoe.

Centro de Información

Viernes, 9 de Noviembre, 4:00-6:00 p.m.
Stateline Road/Crystal Bay TART Stop
Crystal Bay, NV 89402



Por favor, comparta sus comentarios:

ksmith@trpa.org o (775) 589-5236

www.surveymonkey.com/r/2018TransitNeedsSpanish

TRPA • PO Box 5310 • Stateline, NV 89449

Recommendations: Specialized Services

1. Reinstate mobility management program to serve the entire region
2. Coordinate out-of-area medical transportation from South Tahoe and North Tahoe to CA medical centers (Medicare and Medicaid)
3. Replace TART paratransit vehicle
4. Replace TTD paratransit vehicle
5. Secure funding for wheelchair paratransit in North Tahoe/Truckee
6. Funding for ADA accessible infrastructure at bus stops

Recommendations: Fixed Route Services

1. Fixed route transit service to Meyers
2. Transit or shuttle service to Emerald Bay
3. Provide service past 8:00pm in South Tahoe
4. Late night service to Incline Village
5. Provide 30-min peak season service on Hwy 89 and 267
6. Eliminate all passenger fares

Funding

- Regional 5310 formula funding (~\$50k/year)
- Discretionary 5310 funding
- ONE TAHOE initiative (www.onetahoe.org)
 - Study to identify a secure regional revenue source
 - Funding for transit and mobility projects

Questions?



Submit Public Comments:

Kira Smith

ksmith@trpa.org

(775) 589-5236

April 9, 2019