

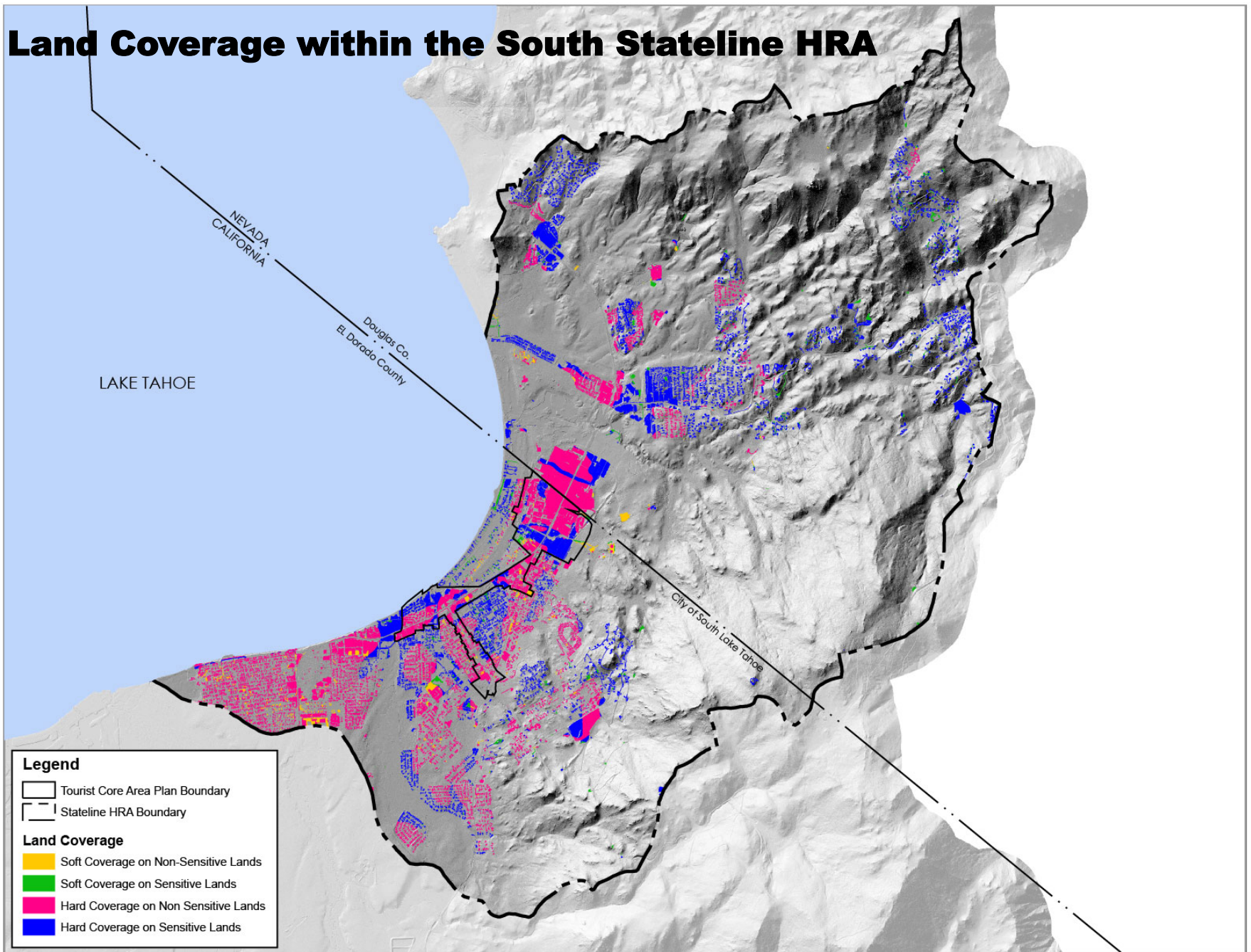
Land Coverage Transfers

Maximum Possible Coverage on Developed Parcels ¹	Coverage Transferred/ Relocated to TCAP from High Capability Lands (LC 4-7) to Facilitate Max Possible Coverage ²	Coverage Transferred/ Relocated to TCAP from Sensitive Lands (LC 1-3) to Facilitate Max Possible Coverage ³
146,900 sq. ft. (3.37 acre)	293,800 sq. ft. (6.74 acres)	146,900 sq. ft. (3.37 acres)



1. 78 parcels with existing development with potential to increase coverage from 50 to 70%. Increase must be from transfer of existing rather than creation of new coverage.
2. Transfers from high capability lands at 2:1 results in net retirement of 146,900 sq. ft. of hard land coverage.
3. Transfer from sensitive lands results in site restoration and prohibition on future development.
4. Transfer of coverage must be hard coverage or soft coverage from SEZs. Use of potential coverage is prohibited.
5. Coverage must be transferred from within the South Stateline Hydrologically Related Area (HRA) (see Map).
6. CTC has no banked hard coverage for sale in the South Stateline HRA therefore all transferred coverage for the 50 to 70% increase must be from currently existing stock.







Land Coverage within the South Stateline HRA



Legend

-  Tourist Core Area Plan Boundary
-  Stateline HRA Boundary

Land Coverage

-  Soft Coverage on Non-Sensitive Lands
-  Soft Coverage on Sensitive Lands
-  Hard Coverage on Non-Sensitive Lands
-  Hard Coverage on Sensitive Lands