

SR 89 Recreation Corridor Management Plan

PDT Meeting #5



DESIGN WORKSHOP | LSC | ORCA | KAREN MULLEN-EHLY | FEHR & PEERS

February 5, 2020

dilemma

Visitation **demand has exceeded infrastructure** resulting in the following key transportation and visitor management issues:

- Poor visitor experience which has a risk for economic impacts as the area has reached a saturation point
- Safety concerns
- Increased environmental disturbance and stormwater run-off resulting in degraded lake clarity
- Congestion and traffic



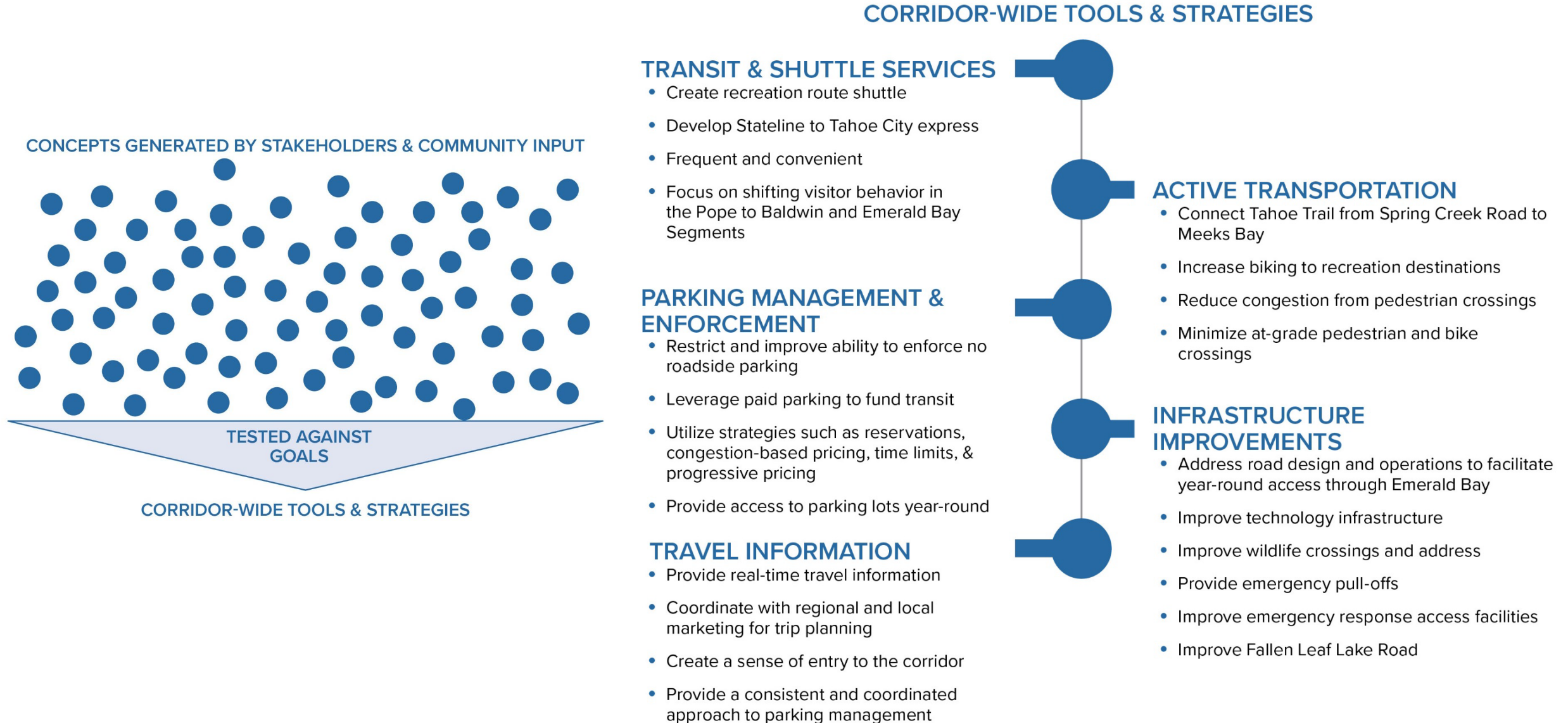
Provide a safe and seamless travel experience that **inspires every visitor and resident to walk, bike, or use transit** to access the corridor's diverse recreation offerings to better **manage congestion, enhance environmental resiliency, and allow people to focus on enjoying the special nature of Lake Tahoe's southwest shoreline.**

goals | what we're trying to achieve thru partnerships

- Provide a quality travel experience for all
- Improve the environment
- Advance safety
- Create comfortable, connected, and convenient transit and trail systems
- Fund the vision
- Set the stage for implementation, maintenance, and operations



concepts to strategies



INTERCONNECTED STRATEGIES



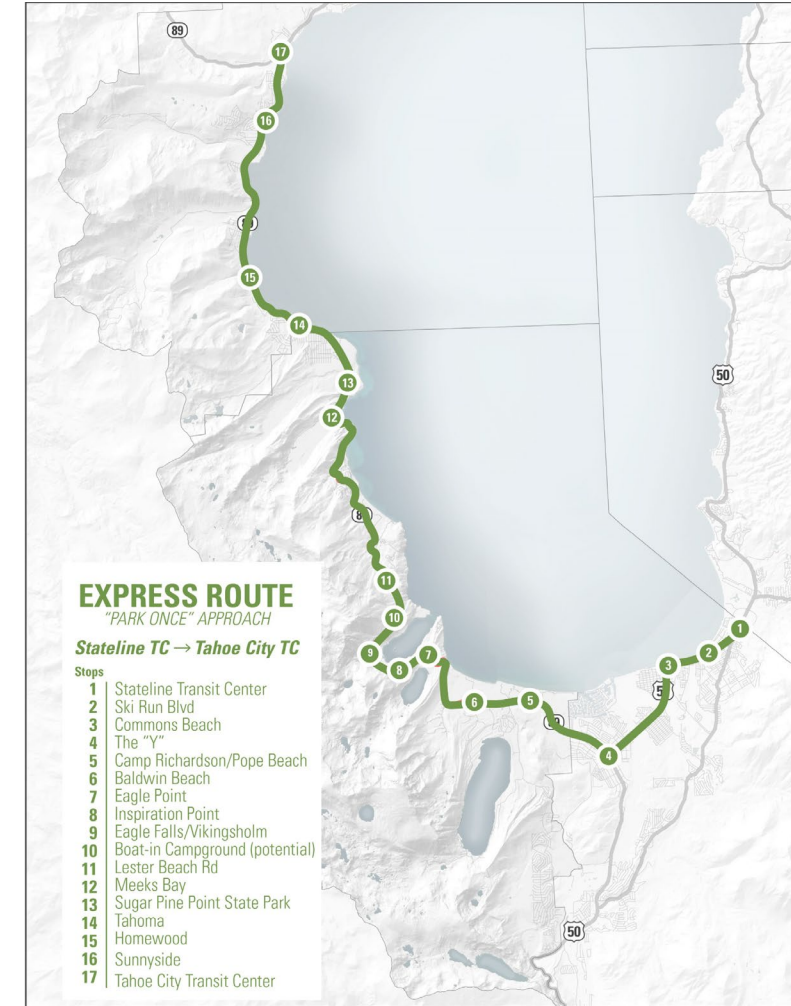
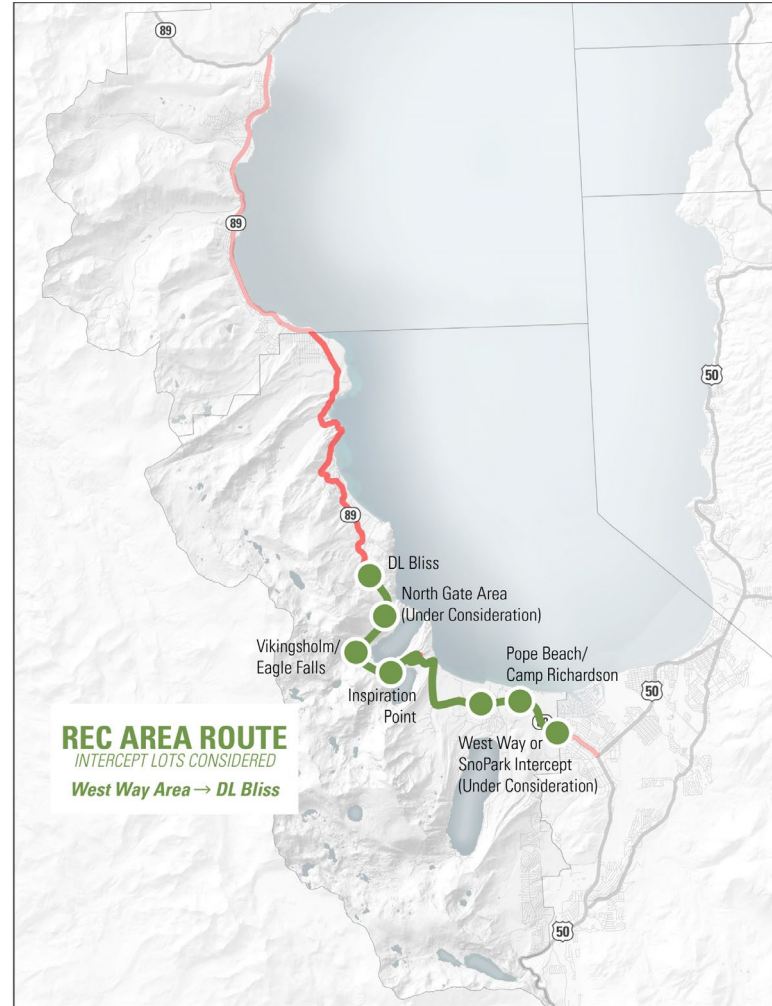
draft projects – big ideas



transit alternatives

Methodology

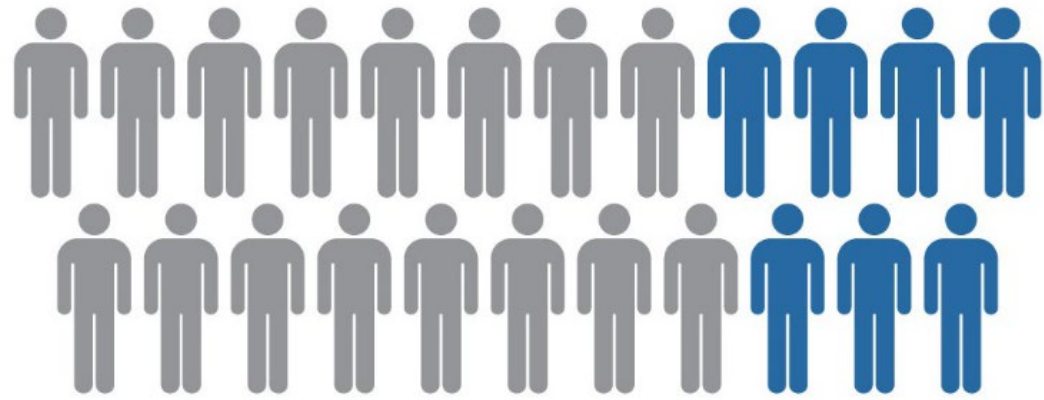
- All have transit during peak season & replace shoulder season parking with off-highway parking improvements
- Routes
 - Recreation Route (Y to Emerald Bay)
 - Park Once Express Route (Stateline to EB, potentially to Tahoe City)
- Potential Intercept Lots for the Rec Route
 - The Y
 - Lake Tahoe Airport
 - Near West Way
 - Sno-Park
 - Near Boat-in Campground



transit alternatives

Methodology

POPE TO BALDWIN SEGMENT 2018 AVERAGE PEAK WEEKEND VISITATION



Continued Use of
Existing Parking Lots



Shift Behavior of
25% of Visitors

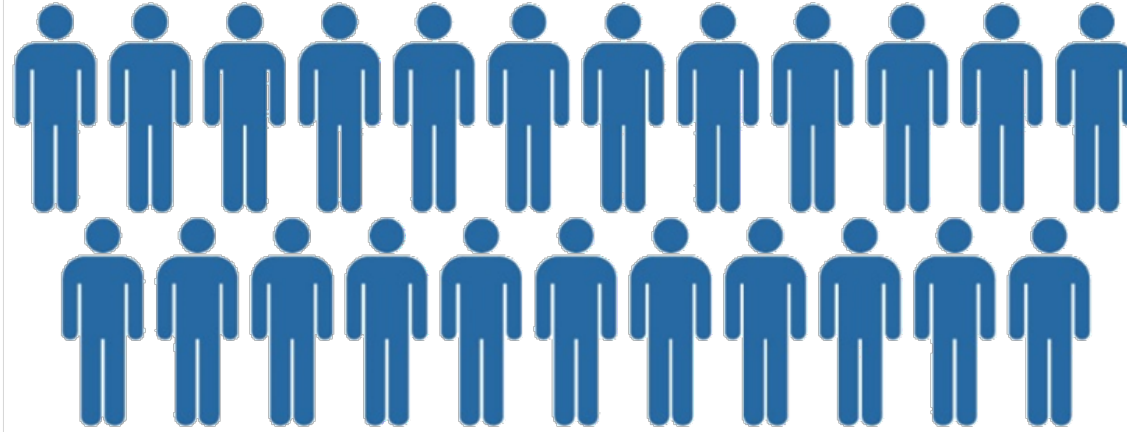


Alternatives	
90%	10%
80%	20%
70%	30%

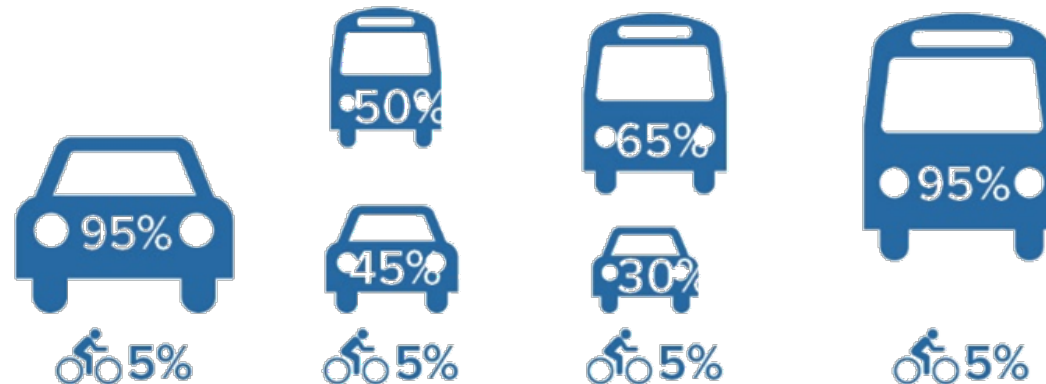
transit alternatives

Methodology

EMERALD BAY SEGMENT 2018 AVERAGE PEAK WEEKEND VISITATION



Alternatives to Shift Visitor Behavior



draft evaluation criteria

Aligned with goals – scoring criteria will consider to what extent the alternative...

- Improves visitor experience without increasing congestion and delay on the highway?
- Reduces the number of vehicles accessing recreation sites?
- Provides a viable alternative to parking along the side of the road?
- Aligns with the desired conditions for natural, physical, social, and operational resources?
- Manages congestion?
- Improves visual quality?
- Improves environmental quality and reduce the amount of fine sediments reaching Lake Tahoe?
- Improves emergency access and response?
- Reduces conflicts among vehicles and bicyclists and pedestrians?
- Equitably serves a broad range of users?
- Is supported by the public?
- Is likely to be competitive for state or federal funding sources or create a sustainable funding stream?
- Takes a long time to complete or be easy to implement?
- Does not significantly impact operational or maintenance budgets?

agency meetings | roles & responsibilities

- Identify “who does what best”
- Not a commitment to do the activities
- Identify who should be involved in future maintenance and operations discussions

[illegible]

agency meetings | roles & responsibilities

CATEGORIES

- ***Enforcement***
 - Temporary roadside parking barrier maintenance
 - Permanent roadside parking barrier maintenance
 - Ticketing
 - Towing
 - Regulatory sign replacement
- ***Parking Lots***
 - Parking meter maintenance
 - Meter collection/administration
 - Operation/management of payment system
 - Sweeping
 - Garbage pickup
 - Regulatory sign replacement
 - Visitor signage
- ***Vista, Transit Stops, & Emergency Turnouts***
 - Sweeping
 - Garbage pickup
- Litter patrol
- Restroom cleaning
- Graffiti Removal
- Regulatory sign replacement
- Visitor/wayfinding signage
- Snow removal
- Brochures
- ***Tahoe Trail***
 - Sweeping
 - Litter patrol
 - Regulatory sign replacement
 - Interpretive signage
 - Public information
- ***Authorized Trails***
 - Routine tread maintenance
 - Visitor signage
 - Litter patrol
 - Monitoring unauthorized trails
 - Public info/Trail guides
- ***Transit***
 - Transit funding
- Bus operation
- Bus stop kiosk maintenance
- Brochures/timetables
- DMS messaging
- Public information
- Mobility Hub litter patrol
- ***Capital Infrastructure Maintenance***
 - Bus replacement
 - Parking lot striping, sealing, etc.
 - Bike lane sealing, overlay, etc.
 - Tahoe Trail sealing, overlay, etc.
 - Turnouts & transit stop sealing, overlay, etc.
 - Bridge inspections
 - Interpretive sign replacement
 - Bench replacement
 - Bear proof can replacement
 - Recreation Corridor gateway signage

discussion

- Roles and responsibilities
- What does approval/acknowledgement/adoption look like for your organization?
- Follow-up meetings scheduled

schedule

- **Stakeholder workshop** **Feb. 27**
- **Public workshops** **Camp Rich Hotel, March 10;
Sugar Pine Point SP, March 11)**
- **Public webinar and online survey** **April 2**
- **Admin Draft CMP complete for PDT review** **May**
- **Final document approvals** **June/July**