

A detailed topographic map of the Lake Tahoe Basin, showing the lake's shoreline, surrounding mountains, and a grid of elevation contours. The map is oriented with North at the top. In the upper right corner, there is a north arrow and a scale bar labeled 'MILES' with markings for 1/2, 0, 1, and 2. The title 'LAKE TAHOE BASIN SCENIC RESOURCE INVENTORY' is printed in large, bold, black capital letters across the center of the map. Below the title, on the left side, is the text 'Prepared by Wagstaff and Brady for the Tahoe Regional Planning Agency'.

LAKE TAHOE BASIN SCENIC RESOURCE INVENTORY

**Prepared by Wagstaff and Brady
for the Tahoe Regional Planning Agency**

SCENIC RESOURCES INVENTORY · TAHOE ENVIRONMENTAL STUDY

SHORELINE UNIT INVENTORY

Introduction

The Lake Tahoe shoreline was surveyed in April of 1982 for its scenic resources, a component of the TRPA's Environmental Thresholds Study. The shoreline was inventoried using the same shoreline units identified in previous evaluations by TRPA and the U.S. Forest Service (1971). Use was made of the U.C. Davis research vessel to provide onshore views of the water's edge and surrounding landscape, from a distance of approximately 1/4 mile. The entire shoreline was navigated, for the most part in a clockwise direction, and each unit surveyed at least once. Landscape subcomponents were recorded and evaluated using a standard rating form, and representative views photographed and mapped. Scenic quality was evaluated in terms of:

- 1) View of backdrop landscape, from the skyline
- 2) Character of the shoreline; the water's edge and foreground, seen from the lake
- 3) Features which are points of particular visual interest on or near the shore

This inventory contains map locations, photographs, narrative descriptions, and scenic quality ratings for the scenic resource subcomponents and units. Figure 1 shows the location of the units. Standard rating forms used in the field for scenic quality evaluations are available for review at the Tahoe Regional Planning Agency office in South Lake Tahoe.

The following paragraphs characterize the predominant scenic resources found in typical shoreline units, and identify the major sources of landscape variety which occur in the basin as seen from the lake.

General Character of Typical Shoreline Units

Backdrop: Hills and ridges, approximately 6300-7500 feet in elevation, seen in middleground (1/2 to 3-5 miles) from inshore waters, and forming a fairly low smooth skyline in panoramic views. They tend to be without distinct features, predominantly forested (mixed conifers), with few distinct vegetation patterns and few signs of man-made development. In areas where the hills are set back farther from the shore (e.g., the south shore and Units 11 and 14), the backdrop may be only glimpsed over or screened altogether by shoreline elements, seen from inshore. Landscape subcomponents of the typical backdrop tend to be rated moderate (2) in scenic quality.

Shoreline: Land is flattish or moderately sloping, with gravel beach or rocks at water's edge. Vegetation approaches the shore closely, with foreground views enclosed usually by pine forest. Scrub vegetation occurs in places. Single-family homes and limited condominium/cluster development often is evident, but not obtrusive among the trees near the shore. Limited views of landscaped areas occur in places, with grass, retaining walls, driveways, etc. There may be glimpses of traffic and

occasional road scars near or above the lake. Small numbers of piers, small boats, and buoys occur and may clutter the shoreline at higher density. Landscape subcomponents of the shoreline tend to be rated low-moderate (1-2) in scenic quality.

Features: Usually no major points of vivid visual interest occur. Low-key features may include: creek outlets marked by deciduous vegetation with distinctive color/texture contrasts, especially with willow; individual houses of atypical design, prominent on or above the water's edge.

Such features tend to be rated moderate-high (2-3) in scenic quality, unless man-made features degrade the unit and intactness of the shoreline.

The typical unit generally attains an overall scenic quality rating of 2 (moderate).

Major Variations in Shoreline Units

Backdrop

1. **Mountain peaks.** Distinctive peaks, alpine summits, and crags create a vivid skyline above approximately 7500 feet; slopes are usually precipitous, with avalanche chutes and other vegetation patterns providing strong color contrast, particularly with snow. Landscape components in this category usually are rated high (3-3+) in scenic quality; for example:

west shore units 5-8, (Mt. Tallac to Rubicon Peak),
north shore units 21-2, (Mt. Baldy et al.),
east shore unit 30 (Monument Peak to Freel Peak), and
south shore units 1-4, 31-33 (Monument Peak to Freel Peak).

2. **Ski run clearings.** Vertical linear clearings create strong visual contrasts, especially in winter, on steep forested mountainsides in middleground and background. Unity and intactness of the backdrop may be considerably reduced, with ratings of low-moderate (1-2) scenic quality, for example:

west shore unit 12 (Homewood/Tahoe ski bowl),
east shore unit 30 (Heavenly Valley), and
southshore units 31-32 (Heavenly Valley).

3. **Other man-made impacts.** Prominent highway scars (for example, Units 6, 23, 26) and housing developments on or above steep slopes (for example, Units 9, 15, 16, 27) create strong visual contrasts which reduce scenic quality ratings of middleground backdrops to low (1).

Shoreline

1. **Extensive sandy beaches.** Uninterrupted stretches of sandy beach, backed by pine forest with well-integrated low-density housing or no development at all, create attractive shorelines where the turquoise color of the water is often most pronounced. Scenic quality ratings are generally moderate-high (2-3); for example:

north shore units 21, 23
east shore units 24, 26, 28-30, and
south shore units 104, 31.

2. Marsh and meadow areas. Sizable openings with grass and/or marsh vegetation create important variety along otherwise forested shores. Most are enclosed by forest, contain distinct color contrasts of vegetation types, and are largely undergraded by man-made developments, attaining scenic quality ratings of high (3); for example:

south shore units 1, 33, and
east shore unit 30.

3. High-density residential/commercial development. Often associated with visible utility lines, traffic, road scars, shoreline clutter of piers/stairways/boathouses/ramps, etc., and partial or no screening by pine forest. Architectural types and colors sometimes conflict. Views onshore to foreground features, e.g. creeks, marsh, or small meadows, may be dominated or blocked by structures. Some erosion is often evident on banks and slopes. Natural landscape unity and vividness is reduced, usually leading to ratings of low (1) scenic quality; for example:

south shore units 1, 31-32,
west shore units 9, 15-16, 18-20,
north shore units 21-23, and
east shore unit 27.

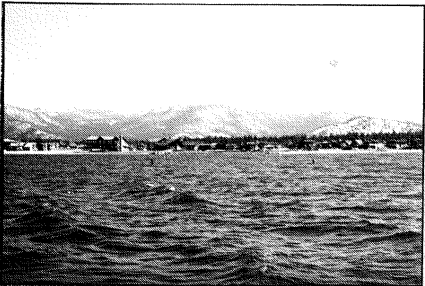
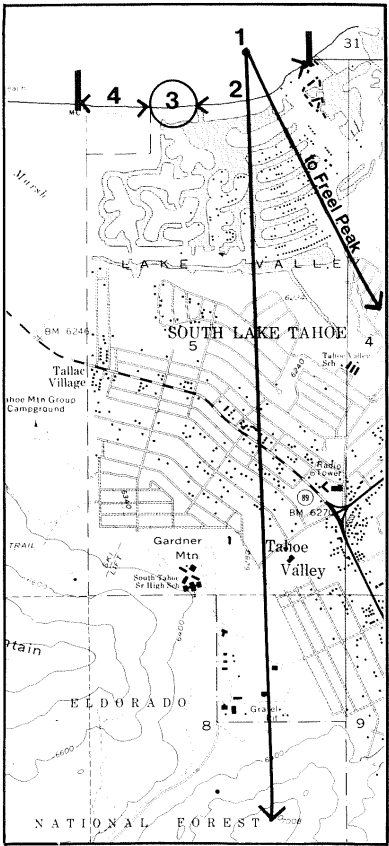
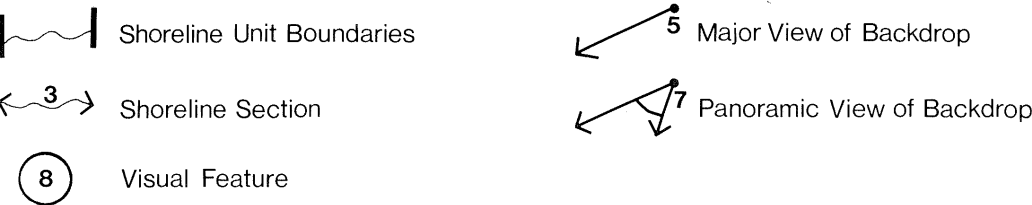
Features

A variety of natural features may enhance the scenic quality of shoreline units; for example, distinctive landforms (Units 13, 26-27, 29-30); unusual boulders/rock formations at water's edge (Units 8, 16, 25-26, 28); pronounced promontories which act as landmarks (Units 5, 8, 11, 16-67, 22-23, 24, 26); and small meadow/marsh areas (Unit 4). Depending on the prominence of the features, they attain scenic quality ratings of 2-3 (moderate-high).

Man-made features may either enhance or detract from the shoreline. Distinctive, old, and historic structures (for example, in Units 6, 10, 12, 23, 25, 26) which are well integrated with the site may attain ratings of 3 (high scenic quality); structures which are very large in scale, or which intrude upon and dominate the water's edge (for example, in Units 1, 15, 20, 22, 27, 30) may reduce scenic quality ratings to low (1).

The shoreline unit summaries that follow describe significant views and features within each unit, and rate the scenic quality of each resource and the overall unit. The views and features are keyed to the accompanying map and photographs for each unit.

SHORELINE MAPS LEGEND



Shoreline Unit 1. Tahoe Keys Summary

Background Views

1.1 Lower mountains in middleground, Freel Peak in background.
Scenic quality: high
Rating: 3

Shoreline Views

1.2 Tahoe Keys view is of low flat undulating sandy shore; few trees; shore dominated by residential development of various colors and shapes, not particularly well designed to fit the site.
Scenic quality: low
Rating: 1

1.4 View of marsh is diversity of color/texture provided by willows, scattered pines, and pine backdrop with flat shores. Houses are visible beyond.
Scenic quality: moderate
Rating: 2

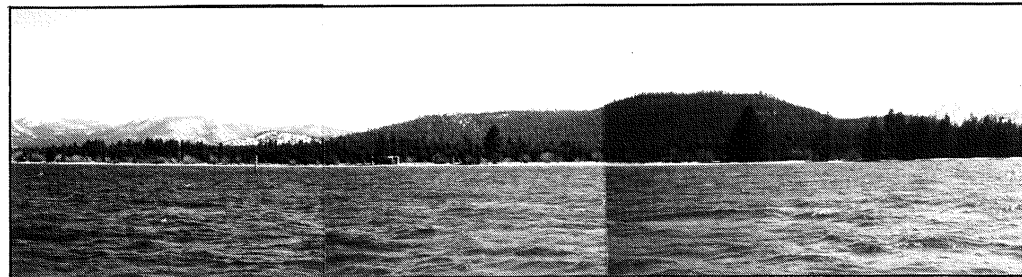
Visual Features

1.3 The Marina entry is an inlet with large new houses, unvegetated shore.
Scenic quality: low
Rating: 1

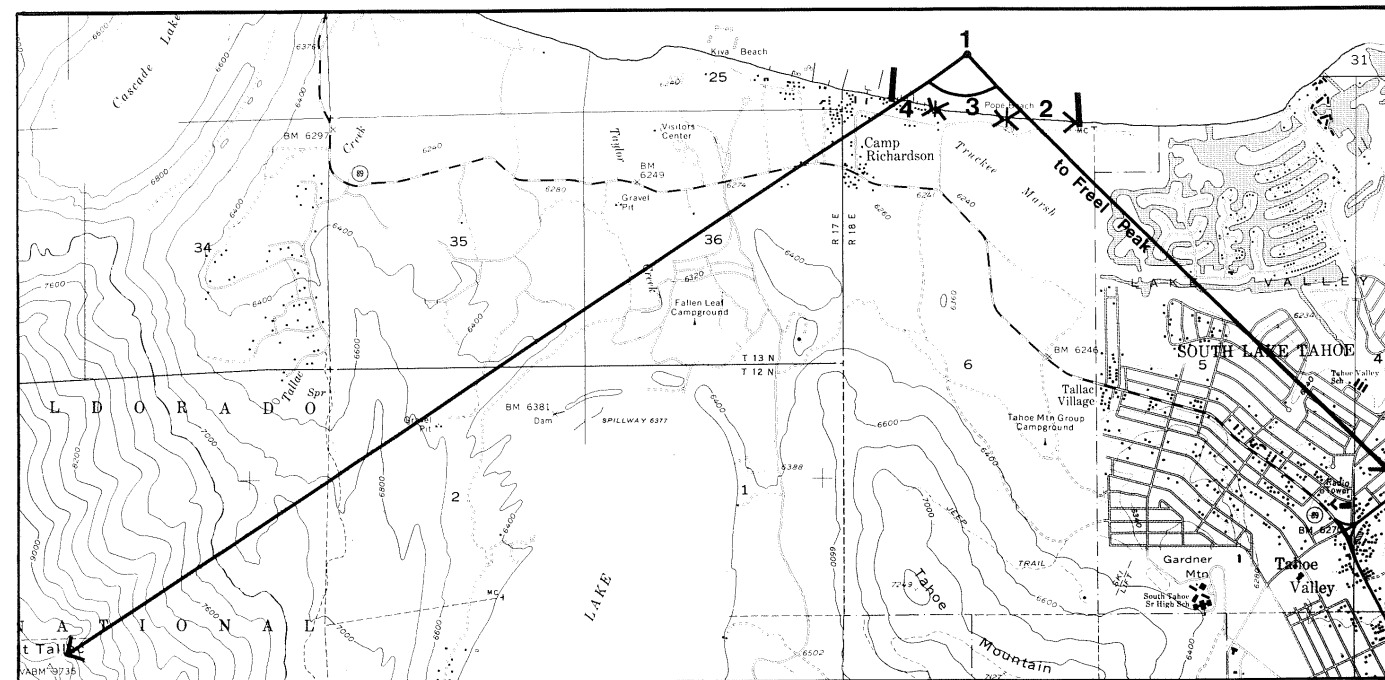
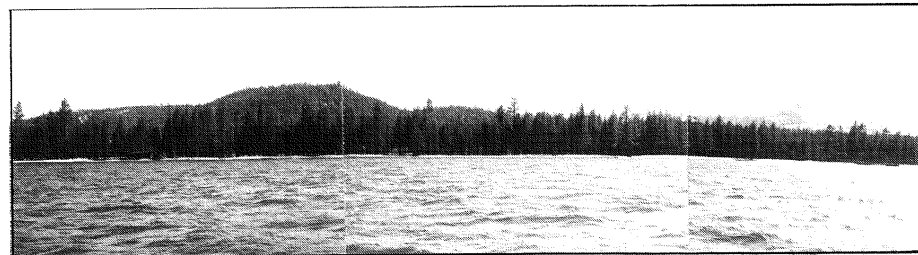
Overall unit scenic quality: low
Rating: 1

SHORELINE UNIT 1. TAHOE KEYS_____

1



4



SHORELINE UNIT 2. POPE BEACH

Shoreline Unit 2. Pope Beach Summary

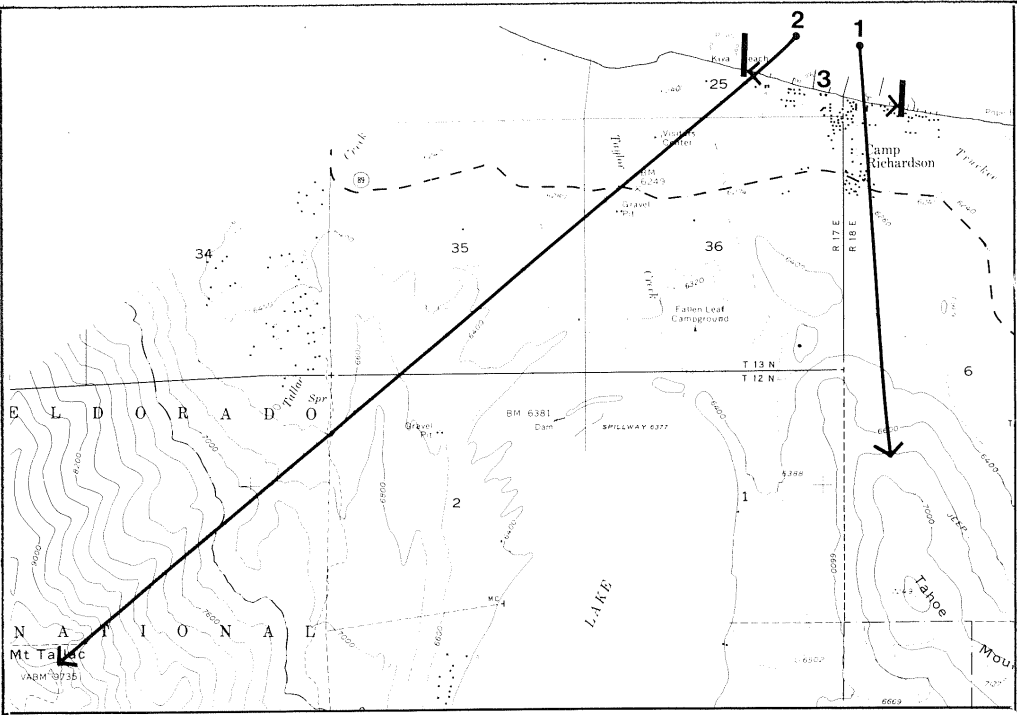
Background Views

- 2.1 Panorama from Freel to Tallac peaks, with lower forested ridges in middle-ground.
Scenic quality: exceptionally high
Rating: 3+

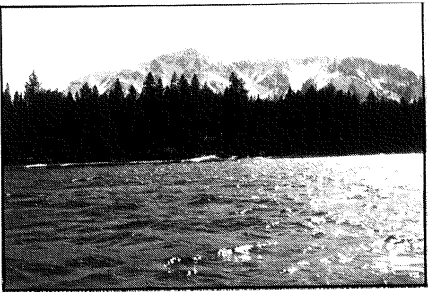
Shoreline Views

- 2.2 View of relict marsh has diversity of color/texture provided by willows, scattered pines, and pine backdrop with flat shore. Houses visible beyond.
Scenic quality: moderate
Rating: 2
- 2.3 View is of sandy beach with willows and scattered trees; two unattractive block-shaped wooden toilet buildings. Cars of beach users would be visible.
Scenic quality: moderate
Rating: 2
- 2.4 View is of dense coniferous forest, flat shoreline, sandy beaches; some housing visible among trees; some piers.
Scenic quality: moderate
Rating: 2

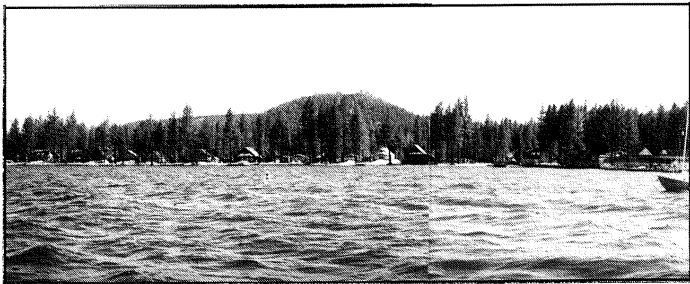
Overall unit scenic quality: moderate
Rating: 2



2



3



Shoreline Unit 3. Jameson Beach Summary

Background Views

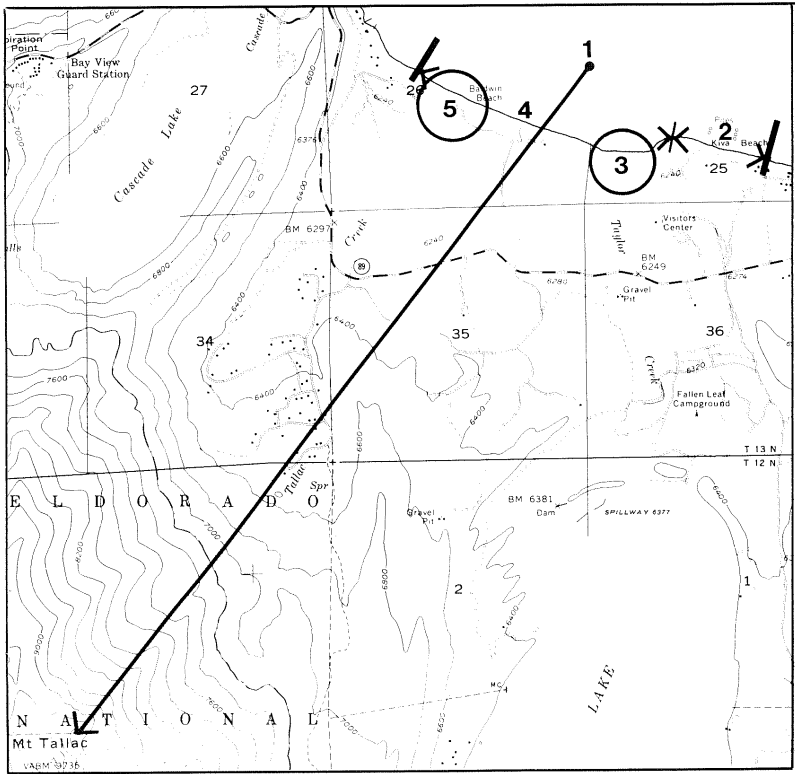
- 3.1 Tahoe Mountain has low ridges and is uniformly forested.
Scenic quality: high
Rating: 3
- 3.2 View of Mt. Tallac is spectacular with rugged skyline, snowy peaks, rock faces, forest patterns on steep slopes.
Scenic quality: exceptionally high
Rating: 3+

Shoreline Views

- 3.3 View is of very flat, low shore, sandy beach, many old wooden piers, cabins among trees, open pine forest. Camp Richardson (Bender's) Marina has established appearance and generally low impact.
Scenic quality: moderate
Rating: 2

Overall unit scenic quality: high
Rating: 3

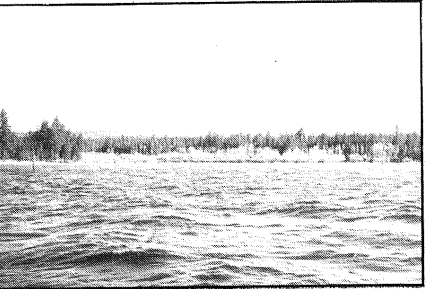
SHORELINE UNIT 3. JAMESON BEACH



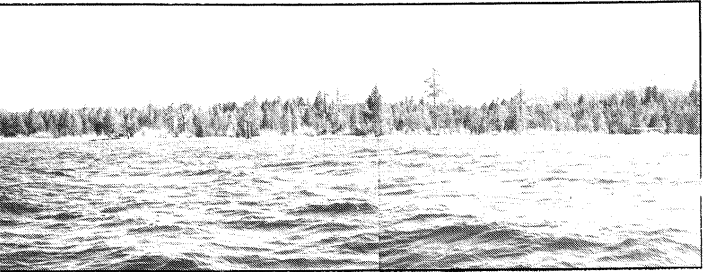
2



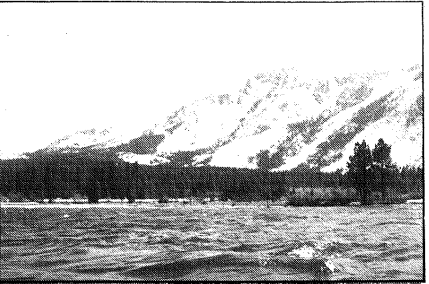
3



4



5



Shoreline Unit 4. Taylor Creek Meadow Summary

Background Views

- 4.1 View of Mt. Tallac is of vivid peak and rock outcrops; snow and vegetation patterns are seen in middleground.
Scenic quality: exceptionally high
Rating: 3+

Shoreline Views

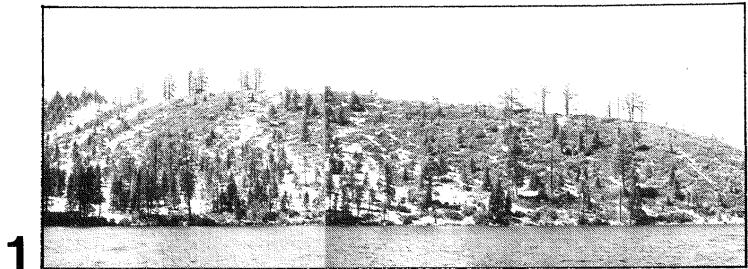
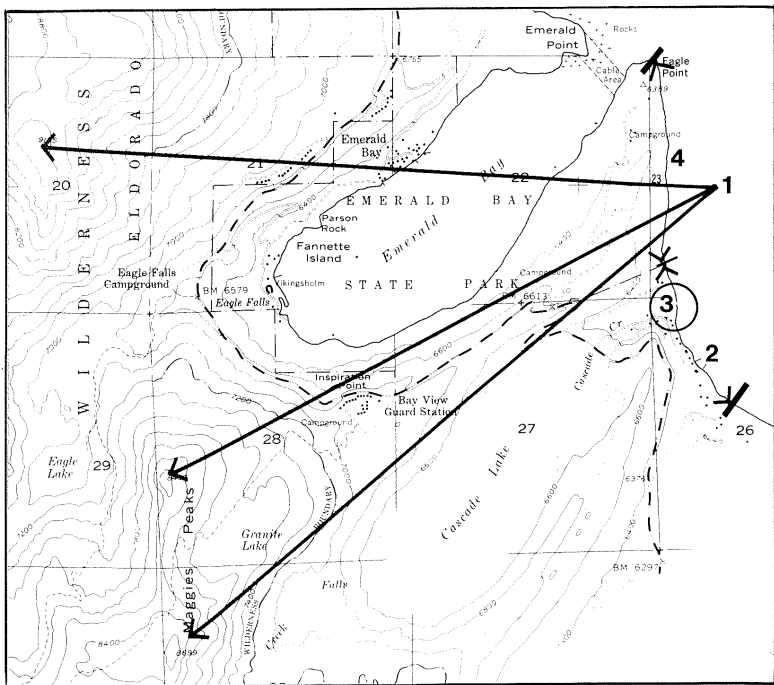
- 4.2 View of forest is of flat shore with low bank; trees close to water, with occasional big houses set in them; some deciduous trees. No backdrop is visible.
Scenic quality: moderate
Rating: 2
- 4.4 View of Baldwin Beach is of flat shore, sandy beach; diverse coniferous forest with many large, old, statuesque trees; some small unobtrusive visitor facilities.
Scenic quality: high
Rating: 3

Visual Features

- 4.3 Taylor Creek Meadow contains a marsh with willow and aspen, backed by pine. Diverse colors and seasonal effects make this a very scenic feature.
Scenic quality: exceptionally high
Rating: 3+
- 4.5 Tallac marsh contains marsh and meadow vegetation with willows and scattered pine; there is a sandy beach with conspicuous unscreened visitor building on point.
Scenic quality: high
Rating: 3

Overall unit scenic quality: high
Rating: 3

SHORELINE UNIT 4. TAYLOR CREEK MEADOW



Shoreline Unit 5. Ebrite Summary

Background Views

- 5.1 Rugged peaks (Maggie's Peaks, and unusual rock spikes at south end of Rubicon Peak ridge) are in middleground and background, visible over intervening ridge.
Scenic quality: exceptionally high
Rating: 3+

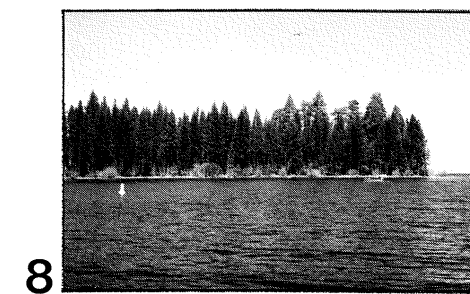
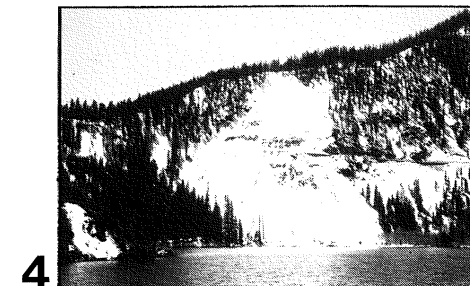
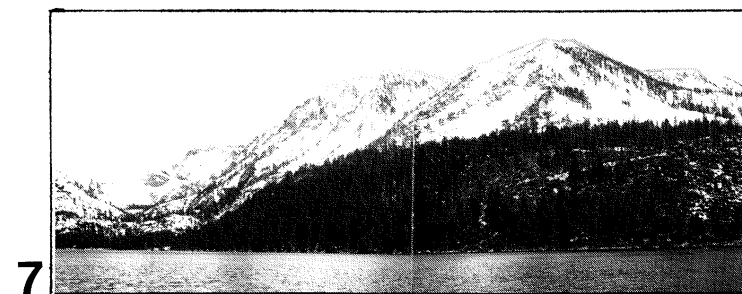
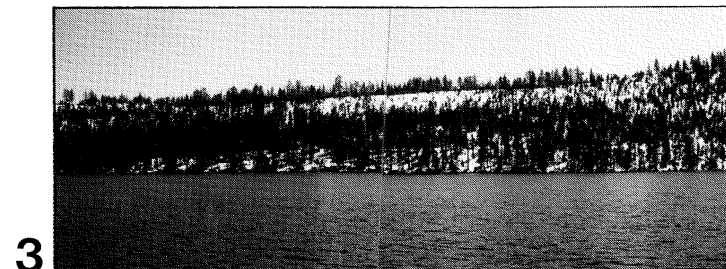
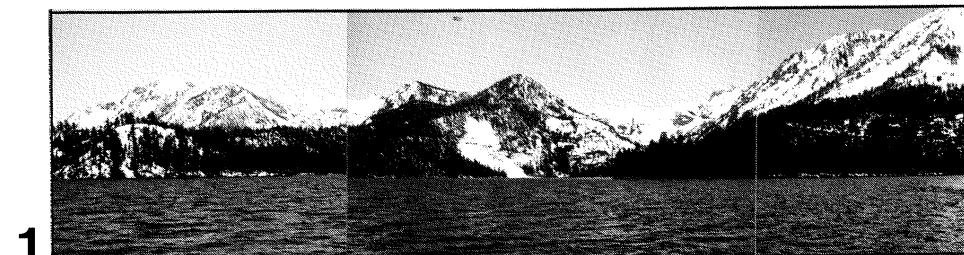
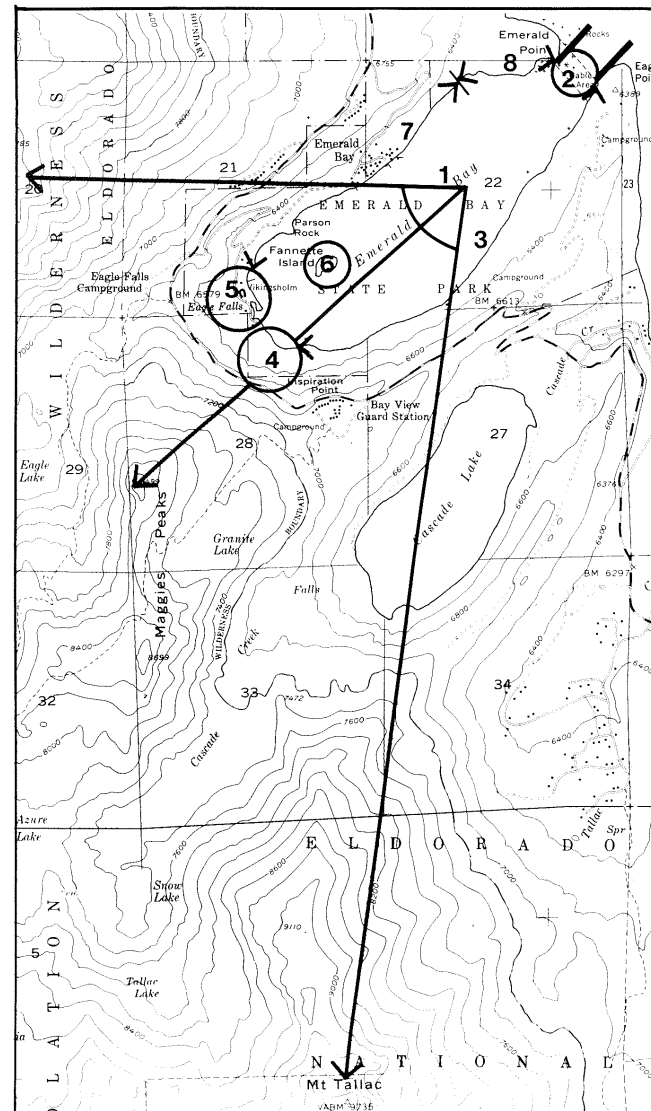
Shoreline Views

- 5.2 South end is steep bank with pine forest; old cabins among trees, some in disrepair; piers and a few boathouses towards south part. Prominent road-scar crossing opening in forested hillside above.
Scenic quality: moderate
Rating: 2
- 5.4 View is of steep rocky edge with scrub scattered pine, rising to low ridge.
Scenic quality: high
Rating: 3

Visual Features

- 5.3 Cascade Creek mouth has small rapids entering lake, but not conspicuous.
Scenic quality: moderate
Rating: 2

Overall unit scenic quality: moderate
Rating: 2



Shoreline Unit 6. Emerald Bay Summary

Background Views

- 6.1 View is of enclosing mountainsides with spectacular rugged skylines, sheer slopes, rock faces, avalanche chutes, snow, and vegetation patterns. Variety of rock colors, jagged rock spikes are visible on skyline to north. Maggie's Peaks and south end of Rubicon Peak Ridge is most prominent with Mt. Tallac visible from bay enclosure.
Scenic quality: exceptionally high
Rating: 3+

Shoreline Views

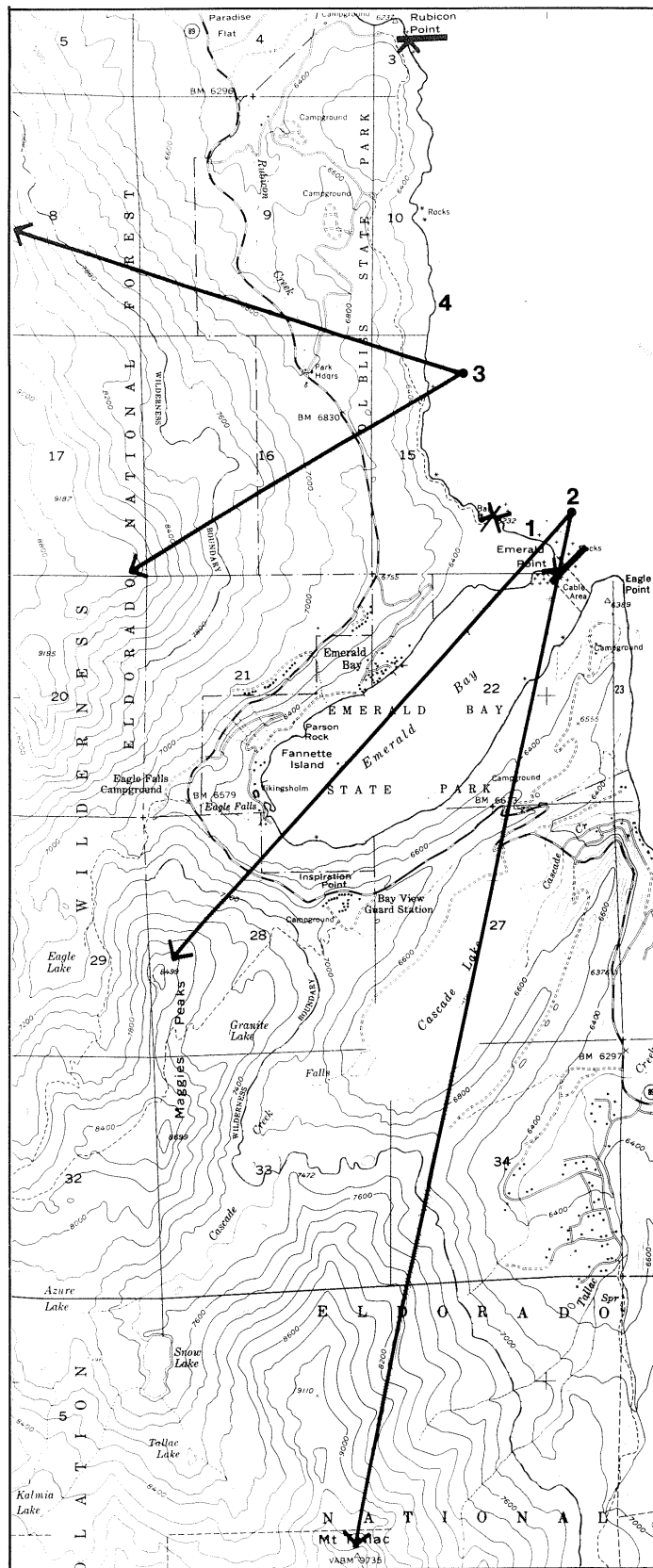
- 6.3 South side of Bay is very steep, rising to a smooth ridgeline 600 feet above the shore; open pine forest and scrub; road scar at west end is not prominent.
Scenic quality: high
Rating: 3
- 6.7 North side of Bay rises steeply above banks at water's edge; scrub and scattered pine; highway scars and erosion prominent.
Scenic quality: moderate
Rating: 2
- 6.8 Emerald Point has flat shore with sandy gravel beach, dense forest with willows at water's edge.
Scenic quality: moderate
Rating: 2

Visual Features

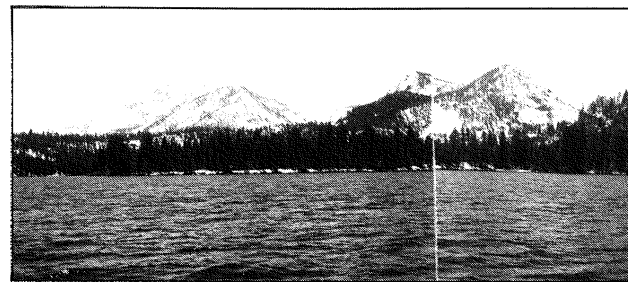
- 6.2 Unique gap at entrance to Bay provides framed vista in both northeast and southwest directions.
Scenic quality: high
Rating: 3
- 6.4 Slide area of avalanche and highway scar drops sheer to water's edge, dominating west end of Bay.
Scenic quality: moderate
Rating: 2
- 6.5 Outfall of Cascade Creek marked by big pines, aspen, and willow; Vikingsholm stone mansion provides centerpiece; small wooden pier does not detract.
Scenic quality: high
Rating: 3
- 6.6 Unique rocky island with distinctive boulders, scattered pine trees, and small stone structure is visible on summit.
Scenic quality: exceptionally high
Rating: 3+

Overall unit scenic quality: exceptionally high
Rating: 3+

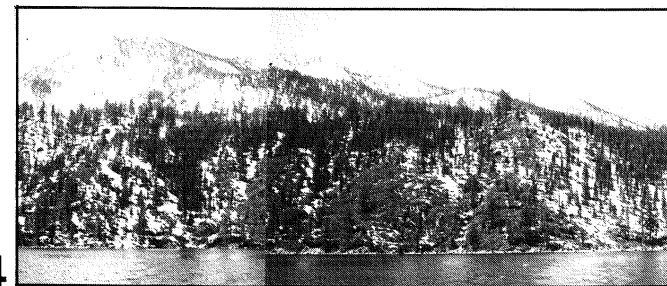
SHORELINE UNIT 6. EMERALD BAY



2



4



Shoreline Unit 7. Bliss State Park Summary

Background Views

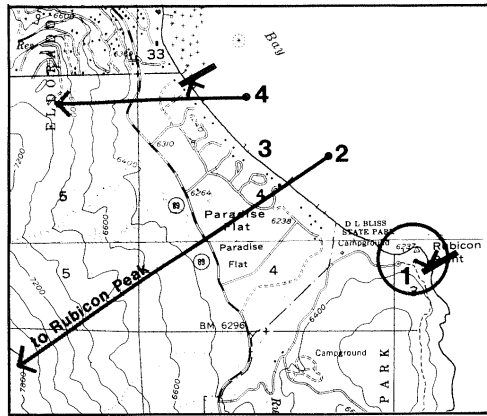
- 7.2 View of Mt. Tallac and Maggie's Peak is of conical peaks and rugged mountains in middleground and background.
Scenic quality: exceptionally high
Rating: 3+
- 7.3 Upper crests of Rubicon Peak ridge are visible, with rock/snow/vegetation patterns.
Scenic quality: high
Rating: 3

Shoreline Views

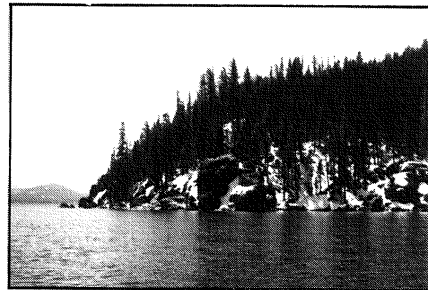
- 7.1 Emerald Point shoreline is flat, rocky, with pine forest; willow scrub on the Point.
Scenic quality: moderate
Rating: 2
- 7.4 Steep hillside sheer to water; rocky, scrub, scattered pine, boulders at edge. Large cedars and different age-groups of trees; dense pine in some places. Shallow indentations along shore. Trail visible at south end.
Scenic quality: high
Rating: 3

Overall unit scenic quality: high
Rating: 3

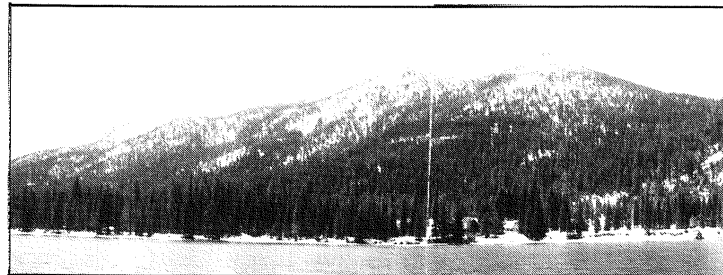
SHORELINE UNIT 7. BLISS STATE PARK



1



2



SHORELINE UNIT 8. RUBICON POINT

Shoreline Unit 8. Rubicon Point Summary

Background Views

- 8.2 View of Rubicon Peak ridge is of crisp skyline of broad peaks in middle-ground with steep-sided ridgeline devoid of trees at higher elevation; some avalanche chutes and rock outcrops.
Scenic quality: exceptionally high
Rating: 3+
- 8.4 Ridge at north end is forested, scarred by roads, grading, and scattered homes on open hillside; middleground.
Scenic quality: low
Rating: I

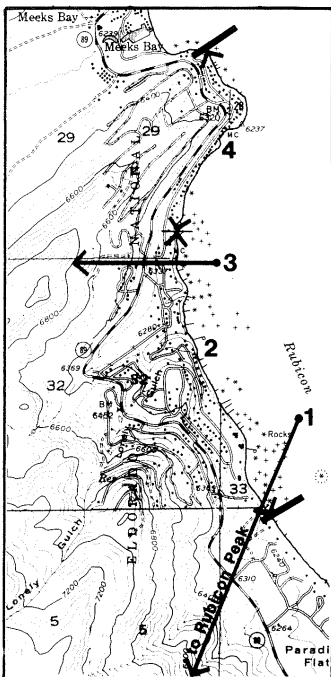
Shoreline Views

- 8.3 Paradise Flat is a low shore, with gentle bank, sand beach; large homes among trees, though at low density, attractively designed. Few small wood piers, no prominent boathouses. Some willow and large cedars visible.
Scenic quality: high
Rating: 3

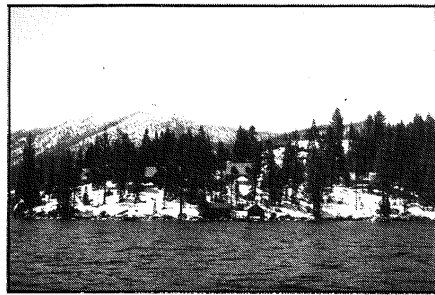
Visual Features

- 8.1 Rubicon Point has large boulders at point; small crags, old dead pines, very steep slopes. Dark gray rock with interesting jointing patterns.
Scenic quality: high
Rating: 3

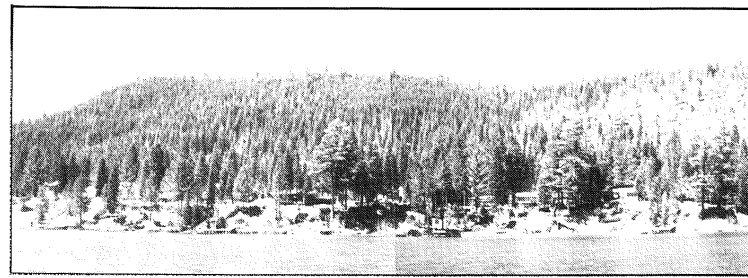
Overall unit scenic quality: high
Rating: 3



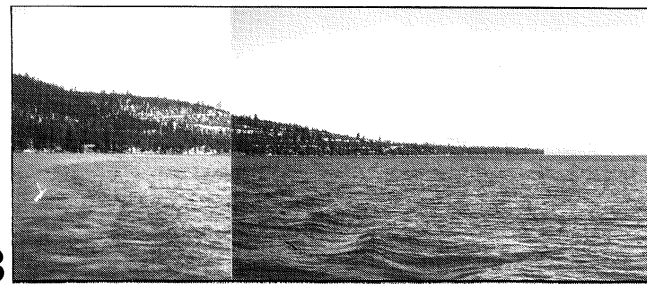
1



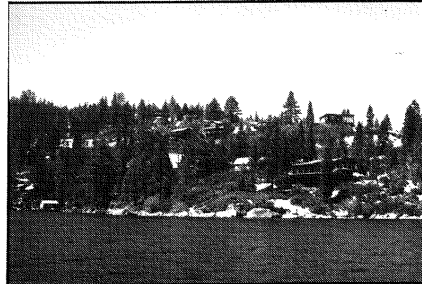
2



3



4



SHORELINE UNIT 9. RUBICON BAY

Shoreline Unit 9. Rubicon Bay Summary

Background Views

- 9.1 View of Rubicon is of conical peak and serrated skyline of bare rock/snow, visible in middleground towards south.
Scenic quality: exceptionally high
Rating: 3+
- 9.3 View is of low forested ridge, scarred by houses and road on point. Dense forest; scars very prominent from a distance.
Scenic quality: low
Rating: I

Shoreline Views

- 9.2 Gulch area has sandy beaches below a steep eroded bank; cluttered by homes, stairs to beach, piers, boathouses, etc. Scattered pines, dense in places.
Scenic quality: low
Rating: I
- 9.4 North end on point has steep banks, rocky/boulders on shore; many homes of rustic appearance; small wood piers and boathouses clutter shore. Some erosion. Openings of scrub with few trees. Some garish house colors and utilities conspicuous. Road scars visible in places.
Scenic quality: low
Rating: I

Overall unit scenic quality: low
Rating: I

Shoreline Unit 10. Meeks Bay Summary

Background Views

- 10.2 Rubicon peak view is of dramatic conical peaks in middleground/back-ground.
Scenic quality: exceptionally high
Rating: 3+
- 10.5 Mountains and ridges form a topographic bowl enclosing the bay. Considerable open areas provide color contrast. Some homes on lower slopes on middleground hills.
Scenic quality: high
Rating: 3

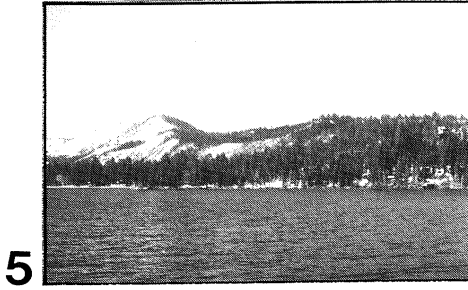
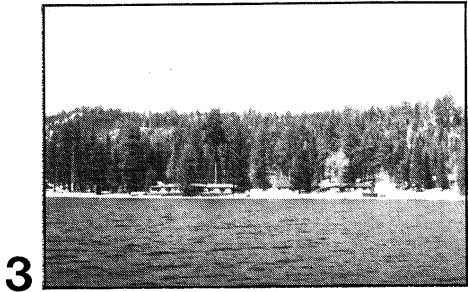
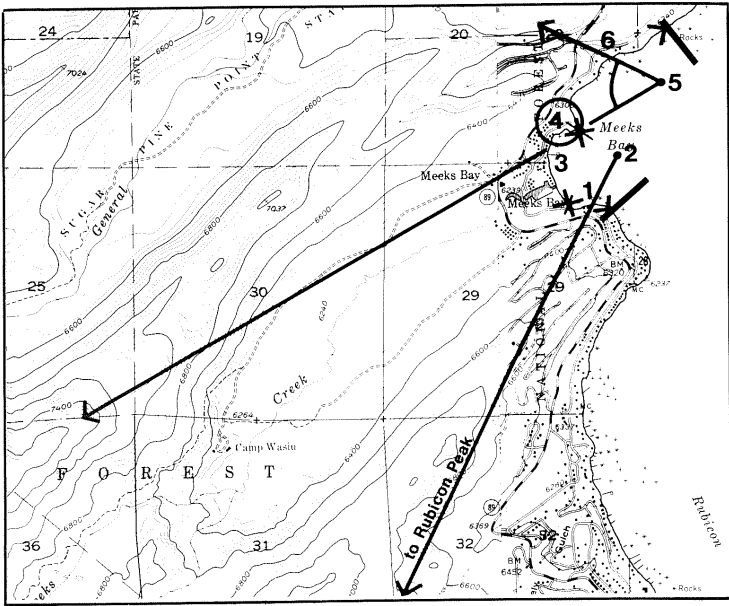
Shoreline Views

- 10.1 Rocky south side is steep, with boulders. Old homes among pines are visible.
Scenic quality: moderate
Rating: 2
- 10.3 Meeks Creek area has Chevron sign at creek mouth which mars otherwise natural appearing area with diverse vegetation. Low, flat, sandy beach. Small marina is unobtrusive, but retaining walls of gray concrete and block-shaped green cabins of the resort detract. Erosion and lack of screening on campground are evident.
Scenic quality: moderate
Rating: 2
- 10.6 North-side view of low rocky bank with some erosion. Several boathouses and rustic buildings/cabins. Some utilities visible. Slope is forested.
Scenic quality: moderate
Rating: 2

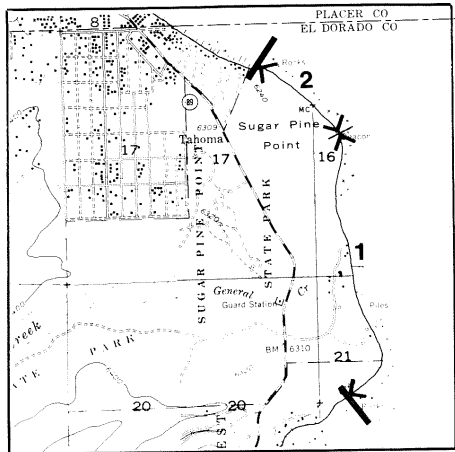
Visual Features

- 10.4 Rustic cabin is well sited among mature trees and boulders on small point.
Scenic quality: high
Rating: 3

Overall unit scenic quality: high
Rating: 3



SHORELINE UNIT 10. MEEKS BAY



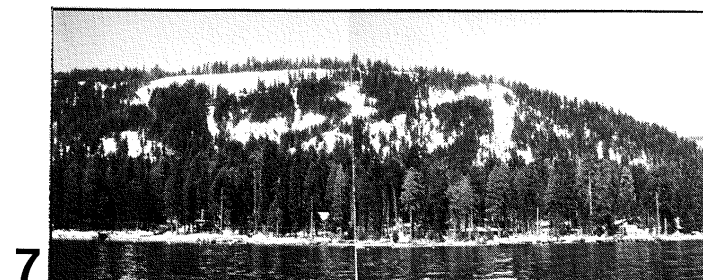
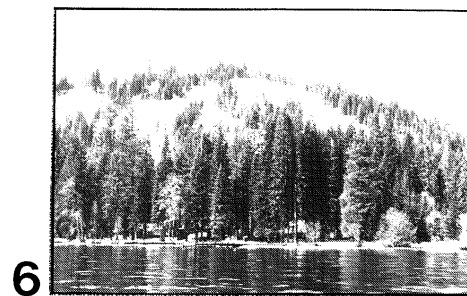
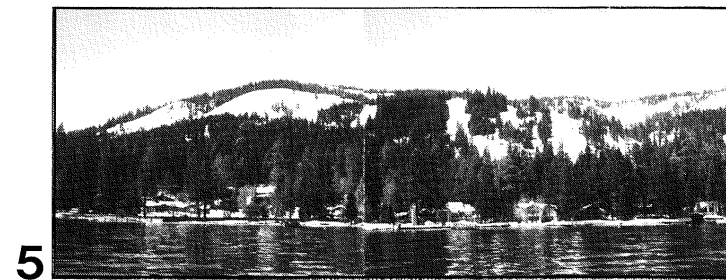
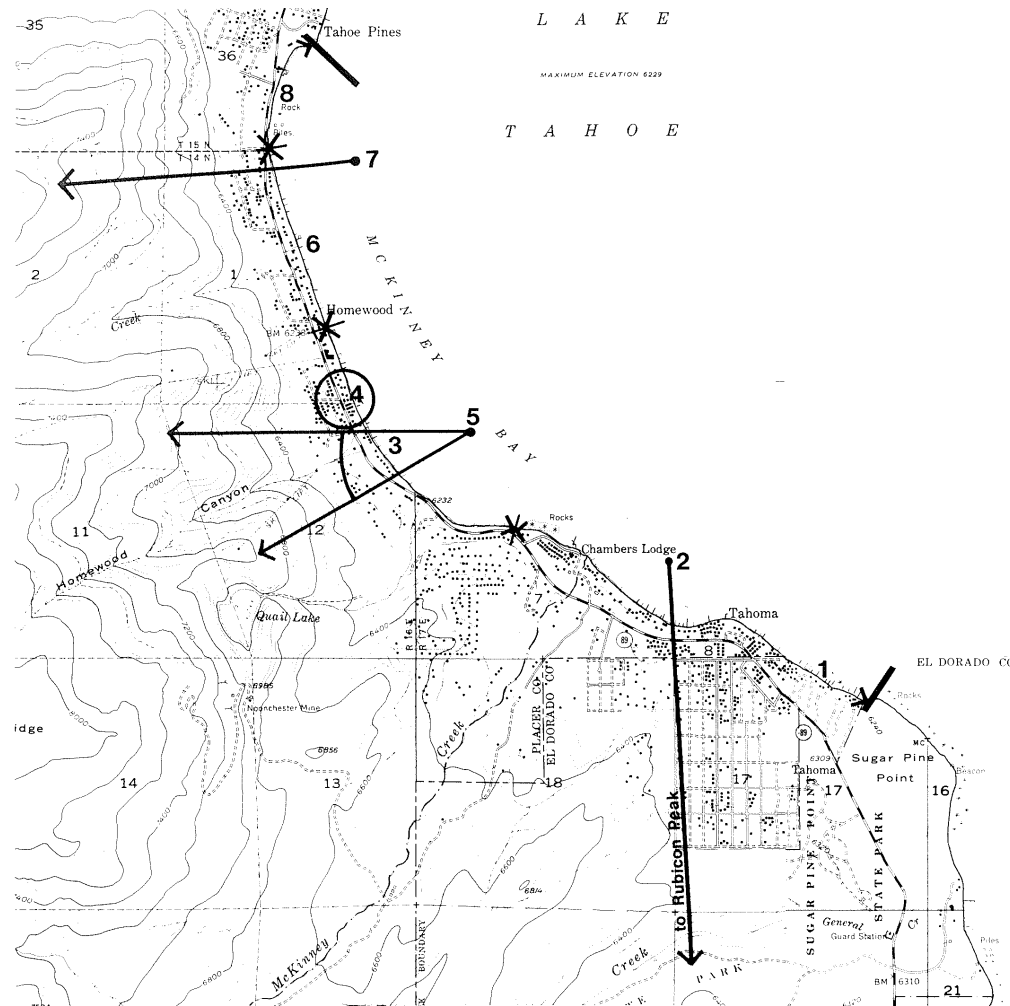
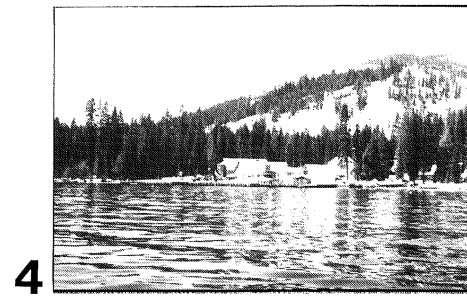
Shoreline Unit 11. Sugar Pine Point Summary

Shoreline Views

- 11.1 View south of point is of sandy beaches, low earth bank with undergrowth; few clearings, cedars, pines, willow, with open forest. Riparian vegetation at General Creek and old cabins and wood piers with small rustic boathouses are seen. Some riprap and large boulders are visible.
Scenic quality: high
Rating: 3
- 11.2 View north of point is of low bank, flat, gravel beach; thick pine forest reaches to shore and there is no backdrop. View is totally natural, monotonous, save for navigation light on point and mature staghead trees. There are a few boulders at point, offshore.
Scenic quality: moderate
Rating: 2

Overall unit scenic quality: moderate
Rating: 2

SHORELINE UNIT 11. SUGAR PINE POINT



Shoreline Unit 12. McKinney Bay Summary

Background Views

- 12.2 Rubicon Peaks are distinctive peaks in background, glimpsed over foreground trees in south of unit.
Scenic quality: high
Rating: 3
- 12.5 Homewood ski hill and Tahoe ski bowl comprise prominent ridges in middle-ground with vertical clearing patterns. Some erosion is visible in summer; low scrub, some grass, ski lifts, and road scars are visible.
Scenic quality: moderate
Rating: 2
- 12.7 View of north end is of low forested ridge in middleground with distinct openings providing color contrast.
Scenic quality: high
Rating: 3

Shoreline Views

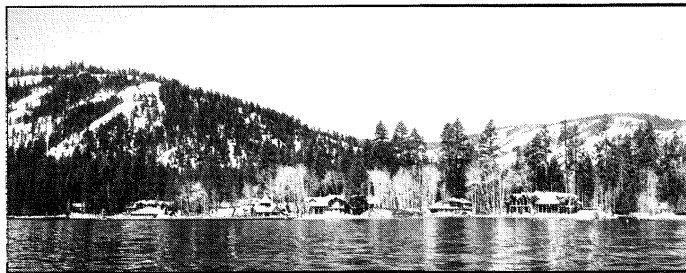
- 12.1 Chambers-Tahoma view is of low bank, sand/gravel beach, some rocks. Low density housing is visible in pine forest, with condominiums and higher density development towards south; piers and boathouses. Deciduous vegetation is a feature at McKinney Creek.
Scenic quality: moderate
Rating: 2
- 12.3 Homewood view is of flat shore with steeper banks in south. Highway is visible through trees, with cutbanks in places. Houses are seen among pines, with large pale marina buildings prominent on shoreline.
Scenic quality: moderate
Rating: 2
- 12.6 Madden Creek view is of gently sloping low shore, gravel beaches with small piers and boathouses. Open pine forest permits views of houses. Madden Creek is not very prominent.
Scenic quality: moderate
Rating: 2
- 12.8 North end view is of gravel beach, gently sloping terrain. Large pines with houses are among them. Highway traffic is visible from lake.
Scenic quality: moderate
Rating: 2

Visual Features

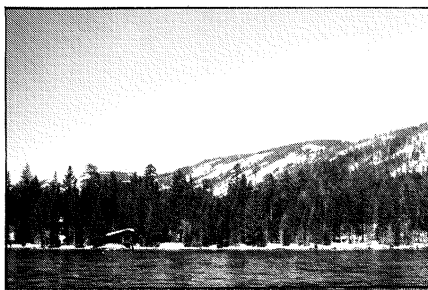
- 12.4 Obexer's marina has large old buildings with corrugated iron, red paint, signs associated with boat repair; tightly clustered. Ancillary boat lifts, piers, and vessels are visible.
Scenic quality: high
Rating: 3

Overall unit scenic quality: moderate
Rating: 2

SHORELINE UNIT 12. MCKINNEY BAY



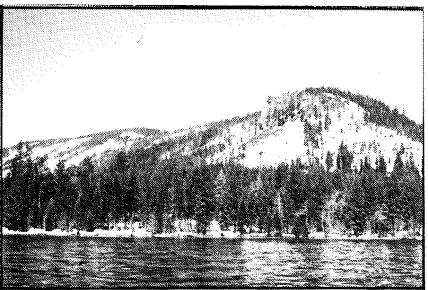
1



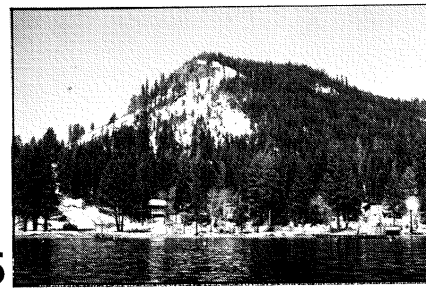
2



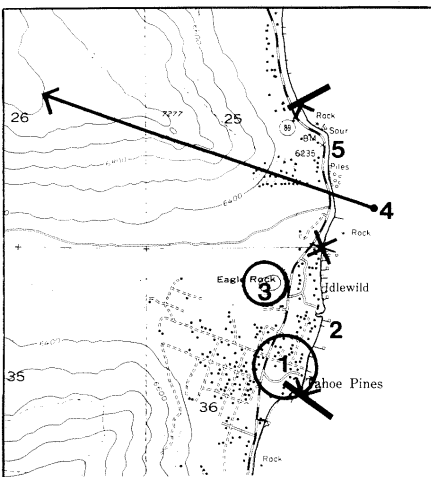
3



4



5



Shoreline Unit 13. Eagle Rock Summary

Background Views

- 13.4 North end view is of crags and clearings on steep slopes of middleground ridges; more crags and peaks in background.
Scenic quality: high
Rating: 3

Shoreline Views

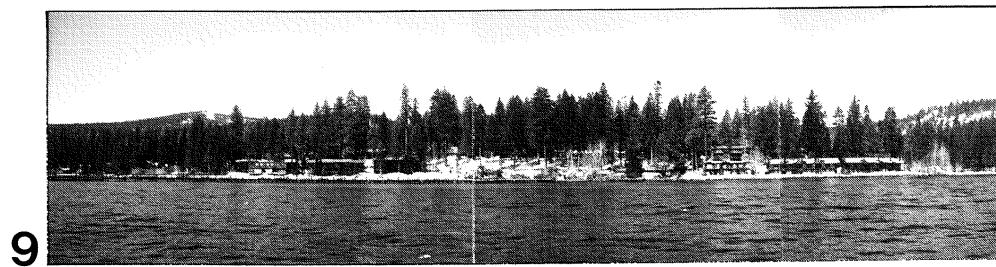
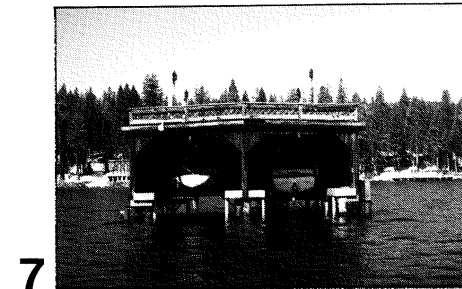
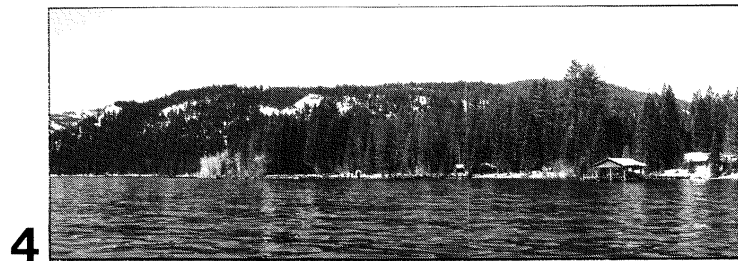
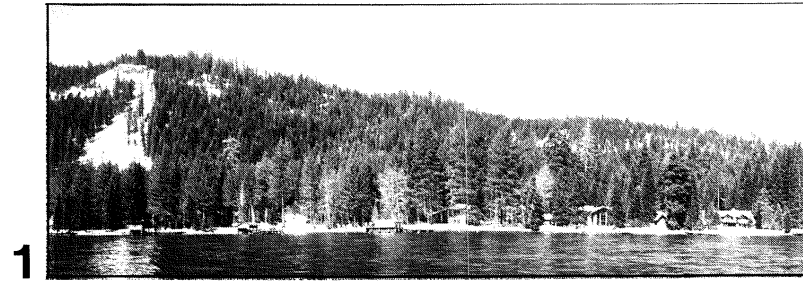
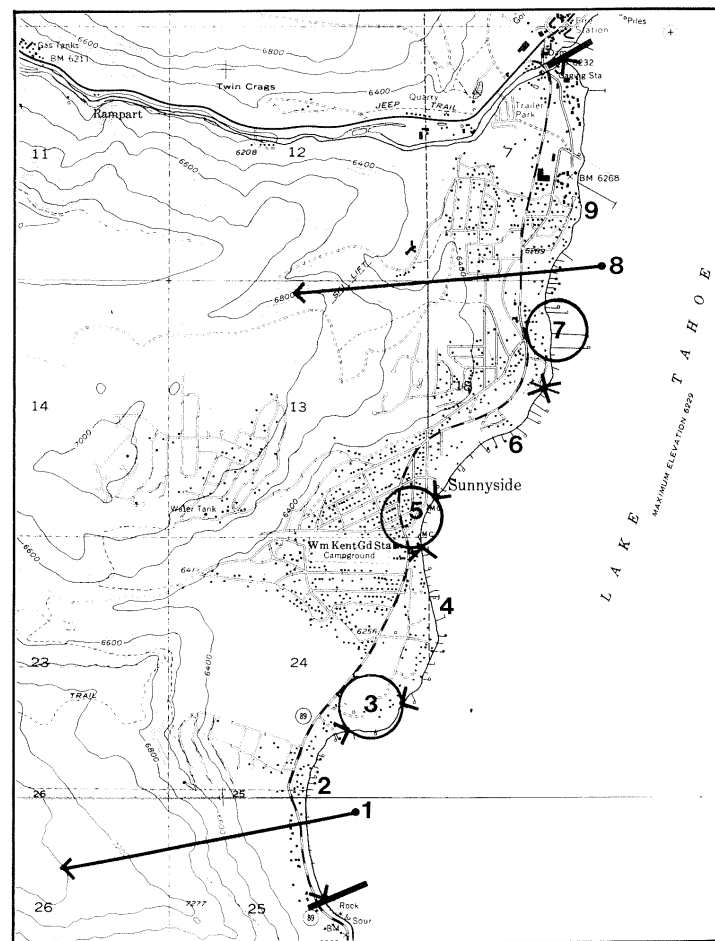
- 13.2 North road view is of gravel beach, flat shoreline. Mainly natural forest is seen, with some houses, small piers and a few boathouses.
Scenic quality: moderate
Rating: 2
- 13.5 North end view is of gravel beach, sloping shore, and pine forest with some houses, small clearings; highway with cutbanks is visible beside shore. Piers line the shore.
Scenic quality: moderate
Rating: 2

Visual Features

- 13.1 View of Fleur du Lac is of unusual architecture and conflicting styles of condominium project; large structures, masonry pier and lighthouse are very prominent, amid mixed vegetation.
Scenic quality: moderate
Rating: 2
- 13.3 Eagle Rock view is of prominent sheer-sided crag rising from trees in foreground; there are a few trees on its flattish top and houses below. View is seen against sky from northeast.
Scenic quality: high
Rating: 3

Overall unit scenic quality: moderate
Rating: 2

SHORELINE UNIT 13. EAGLE ROCK



Shoreline Unit 14. Ward Creek Summary

Background Views

- 14.1 South end view is of steep ridges, forested, with some clearings providing vegetative patterns.
Scenic quality: moderate
Rating: 2
- 14.8 North end view is of low hills in middleground, forested, with small clearings; intermittently visible above foreground trees. Some houses are visible on slopes, but not obtrusive.
Scenic quality: moderate
Rating: 2

Shoreline Views

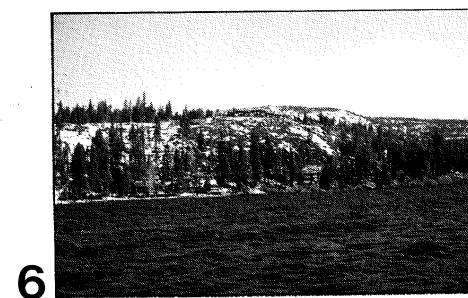
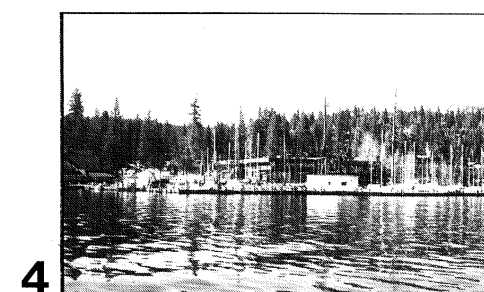
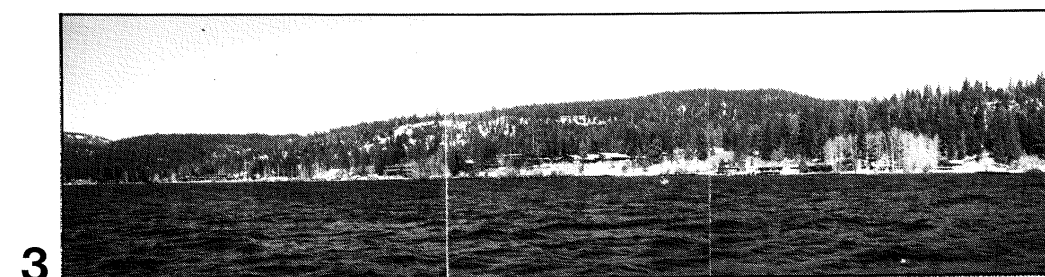
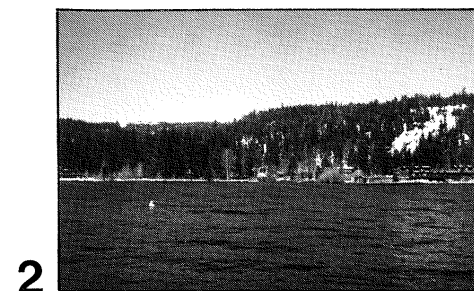
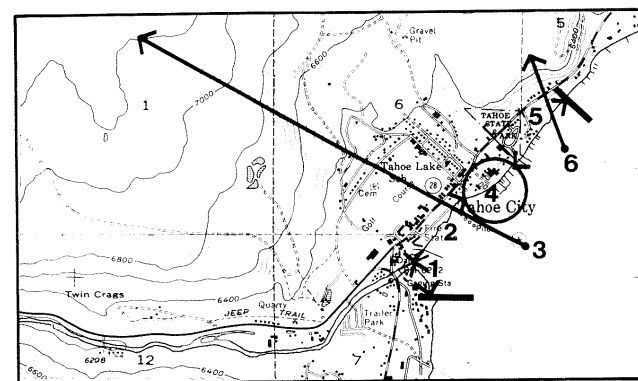
- 14.2 Cove view is of flat shoreline with large, established homes of low density in pine forest; highway is visible in places; piers and boathouses are along the shore.
Scenic quality: moderate
Rating: 2
- 14.4 South of Sunnyside view is of gravel beach and low bank, thickly forested and predominantly natural in appearance; some small piers and occasional boathouses.
Scenic quality: moderate
Rating: 2
- 14.6 North of Sunnyside, view is of gravel beach with steep vegetated bank and thick forest. There are many small piers and scattered houses, some built right on the water's edge.
Scenic quality: moderate
Rating: 2
- 14.9 North end view is of low, flattish rocky shore, with many piers of rustic wooden construction, small boathouses. Many houses and condominiums are seen among pine stands, with evident landscaping and some ground disturbance.
Scenic quality: moderate
Rating: 2

Visual Features

- 14.3 Ward Creek has aspen and riparian vegetation which creates shoreline diversity.
Scenic quality: high
Rating: 3
- 14.5 Sunnyside Marina has bright colors, boating activity, many buoys.
Scenic quality: moderate
Rating: 2
- 14.7 Long pier(s) have large boathouses of rustic appearance and detailed woodwork.
Scenic quality: moderate
Rating: 2

Overall unit scenic quality: moderate
Rating: 2

SHORELINE UNIT 14. WARD CREEK



Shoreline Unit 15. Tahoe City Summary

Background Views

- 15.3 Middleground view is of low forested hills, some scrub and clearings.
Scenic quality: moderate
Rating: 2
- 15.6 Ridge development view is of clearing on steep-sided ridge in foreground.
Reveals prominent residential development on skyline.
Scenic quality: low
Rating: 1

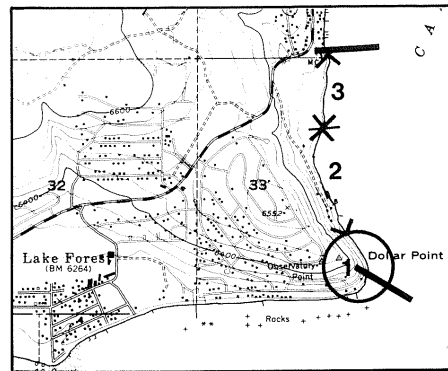
Shoreline Views

- 15.1 South end view is of flat shoreline with low bank; clustered condominiums neatly arranged within pine forest, with visible landscaping and little disturbance. Some deciduous vegetation is seen.
Scenic quality: moderate
Rating: 2
- 15.2 Outlet area view is of steep bank with erosion evident and sparse tree screening; condominium, high-rise hotel, highway traffic and commercial activity prominent close to water's edge. Piers and gray concrete outlet of Truckee River are evident.
Scenic quality: low
Rating: 1
- 15.5 North end view is of gravel beach with gently sloping shore, willow scrub, mixed forests and scattered pine; some open grassy areas. Scattered houses and condominiums and highway traffic are visible. Shoreline is cluttered by piers, boats, and other development.
Scenic quality: moderate
Rating: 2

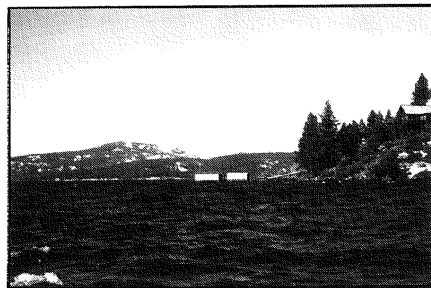
Visual Features

- 15.4 Boats in the commercial/marina provide interesting color contrasts; view includes large pale marina buildings and large commercial buildings with timber facades and prominent windows. Some landscaping is evident.
Scenic quality: low
Rating: 1

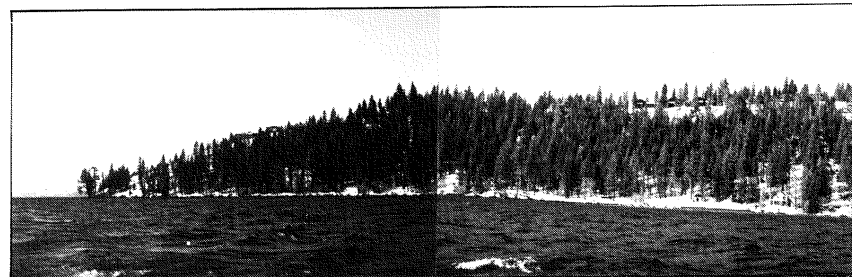
Overall unit scenic quality: low
Rating: 1



1



2



3



Shoreline Unit 17. Dollar Point Summary

Shoreline Views

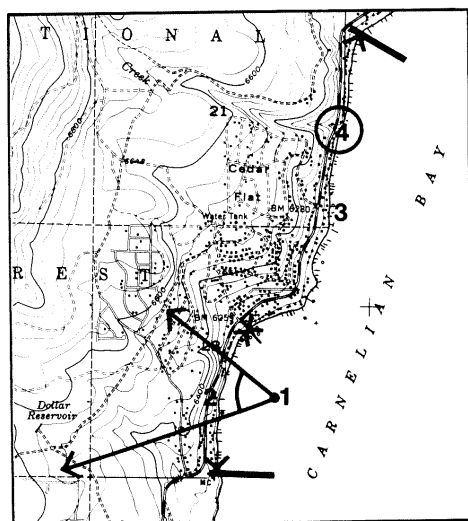
- 17.2 View of Dollar Hill is of rocky shore, rising steeply to long low ridge; forested, brushy in places. Housing visible among trees on skyline. Piers, quay and tennis court are evident at points along shoreline.
Scenic quality: moderate
Rating: 2
- 17.3 View is of gravel beach, some rocks, with a gently sloping bank and pine forest. Condominiums are clustered among trees. Highway scar is visible in middleground. There are few piers, buoys, and beached boats.
Scenic quality: moderate
Rating: 2

Visual Features

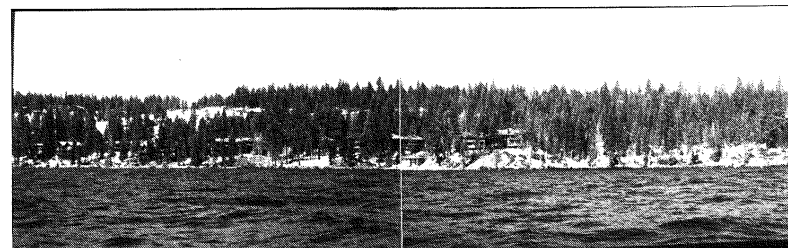
- 17.1 Dollar Point is a steep-sided promontory with scrub, scattered pine, dense on north side. Large single family homes are seen on point with prominent white window blinds and attractive timber construction. Little ground disturbance is evident. Piers and box-shaped boathouses detract from view.
Scenic quality: moderate
Rating: 2

Overall unit scenic quality: moderate
Rating: 2

SHORELINE UNIT 17. DOLLAR POINT



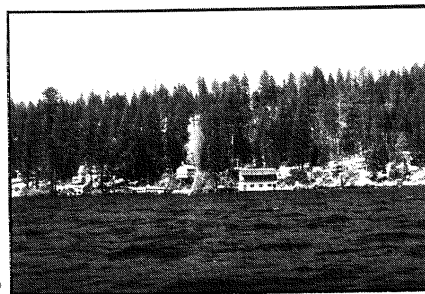
2



3



4



Shoreline Unit 18. Cedar Flat Summary

Background View

- 18.1 South end view is of near-middleground ridge, low and forested, with highway cut and fill evident in clearing.
Scenic quality: moderate
Rating: 2

Shoreline Views

- 18.2 South of Cedar Flat, view is of steep banks, with piers, boathouses, and considerable housing among scattered pines.
Scenic quality: low
Rating: 1
- 18.3 North of Cedar Flat, view is of quite steep banks backed by dense forest, with several houses among trees; some piers, walkways, and boathouses. Highway scars and bank-erosion area are prominent beside lake at north end.
Scenic quality: moderate
Rating: 2

Visual Features

- 18.4 House is built on foundations in the lake beside the shore.
Scenic quality: moderate
Rating: 2

Overall unit scenic quality: moderate
Rating: 2

SHORELINE UNIT 18. CEDAR FLAT

Shoreline Unit 19. Carnelian Bay Summary

Background Views

- 19.1 Contrast is provided by forested and open areas on low, rounded hills in middleground.
Scenic quality: moderate
Rating: 2

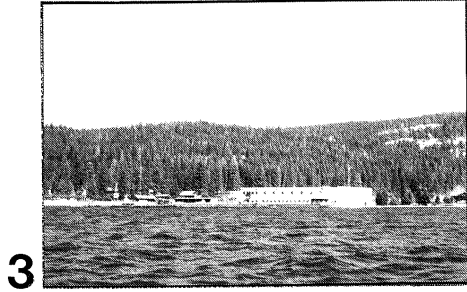
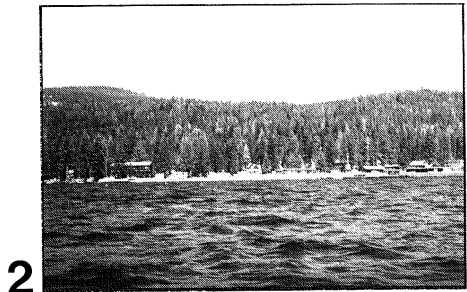
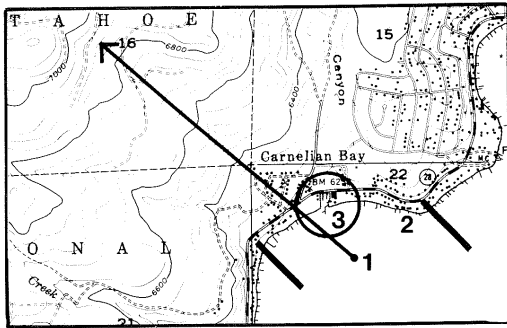
Shoreline Views

- 19.2 Flat shore, dominated by wide gravel area adjoining highway and by commercial development nearby, backed by pine forest; housing is prominent at water's edge east of the boathouse.
Scenic quality: low
Rating: 1

Visual Features

- 19.3 Sierra Boat Company is a large rectangular boathouse in distinctive sky-blue color with associated quay, visible from a distance.
Scenic quality: moderate
Rating: 2

Overall unit scenic quality: moderate
Rating: 2



SHORELINE UNIT 19. CARNELIAN BAY

Shoreline Unit 20. Flick Point Summary

Background View

- 20.3 Forested hills and low ridges are middleground view, with some openings providing color contrast.
Scenic quality: moderate
Rating: 2

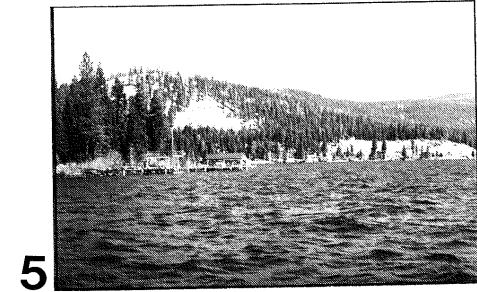
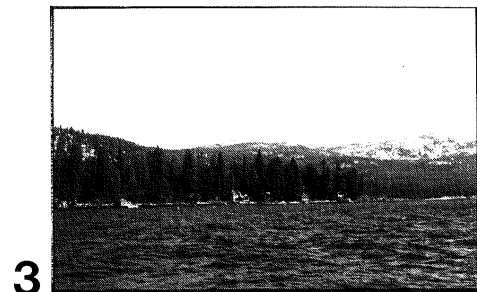
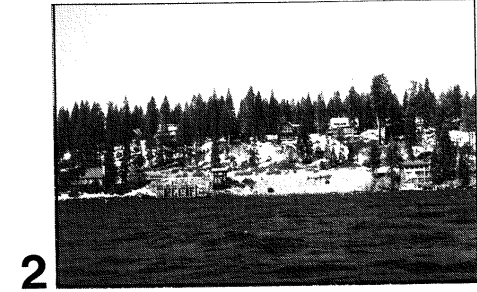
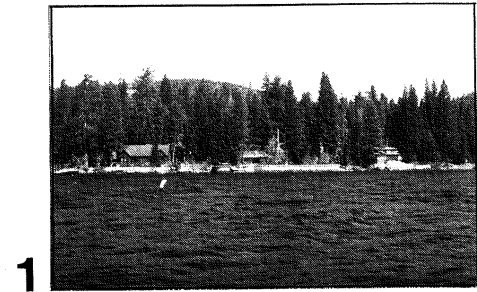
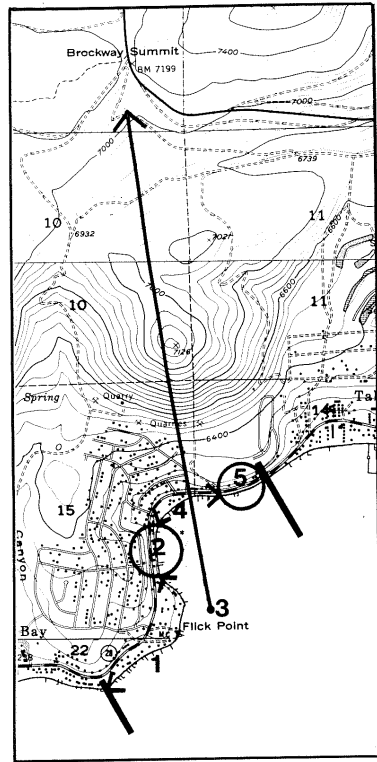
Shoreline Views

- 20.1 Flick Point view is of gently sloping shore, with dense forest and many houses of diverse appearance. Many small piers, boathouses, and breakwaters line the shore.
Scenic quality: moderate
Rating: 2
- 20.4 West end of Agate Bay has steep bank with highway close to shore in places; erosion is prominent, with some screening by trees. Housing, piers, and boathouses are visible along shore.
Scenic quality: moderate
Rating: 2

Visual Features

- 20.2 Sun Club Pier is a small but distinctive roofed timber structure beside shore.
Scenic quality: moderate
Rating: 2
- 20.5 Rocky area comprising steep open slope of rock and disturbed ground is very prominent and pale in color. Housing and road scars are conspicuous.
Scenic quality: low
Rating: 1

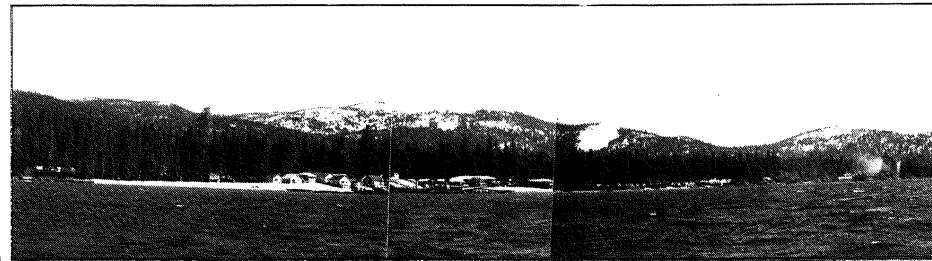
Overall unit scenic quality: moderate
Rating: 2



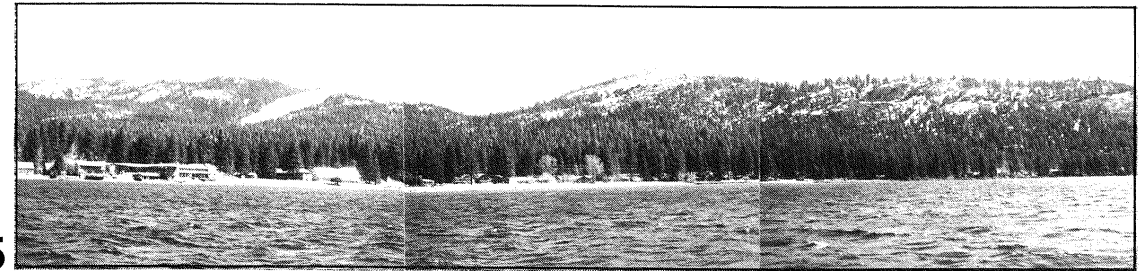
SHORELINE UNIT 20. FLICK POINT



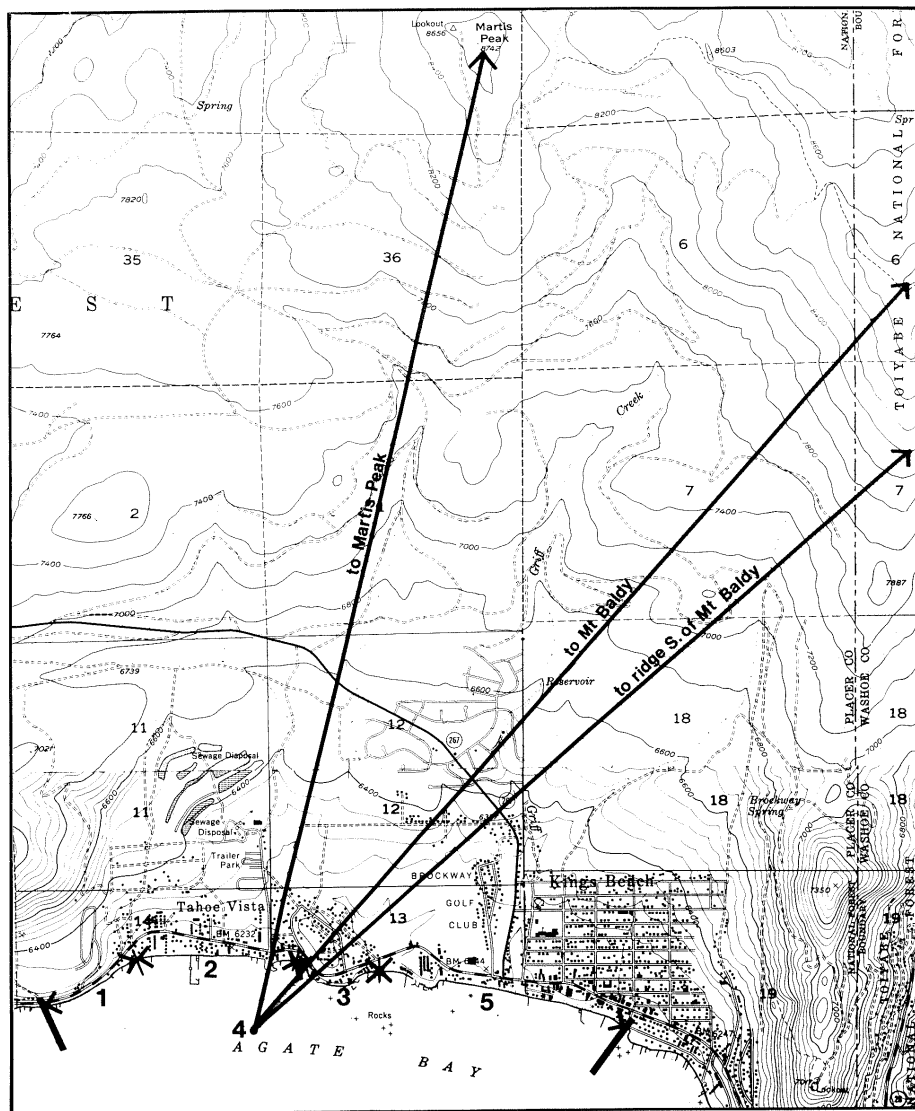
1



2



5



Shoreline Unit 21. Agate Bay Summary

Background Views

- 21.1 View is of steep eroding bank which rises to rocky slope with prominent highway beside shore, buildings and road scars.
Scenic quality: low
Rating: 1
- 21.4 Panorama is of Mt. Baldy and lower ridges in middleground/background. Distinctive openings and bare summit, with color contrasts enhance the view.
Scenic quality: high
Rating: 3

Shoreline Views

- 21.2 Sandy beaches are backed by pine forest with clusters of buildings adjoining and intruding upon them. Various color schemes, little screening of structures, and piers detract from the view.
Scenic quality: moderate
Rating: 2
- 21.3 Central area has flat shore, some rock at water's edge; pine forest and housing is visible with some erosion evident. Old marina is located at shore.
Scenic quality: low
Rating: 1
- 21.5 Golf course/King's Beach view is of sandy beaches and low dunes with occasional boulders; shore is flat and forested, with glimpses of golf course openings. Many residential buildings, some without tree screens, are seen. Some riprap and piers, and prominent solar panels on bank are visible.
Scenic quality: moderate
Rating: 2

Overall unit scenic quality: moderate
Rating: 2

SHORELINE UNIT 21. AGATE BAY

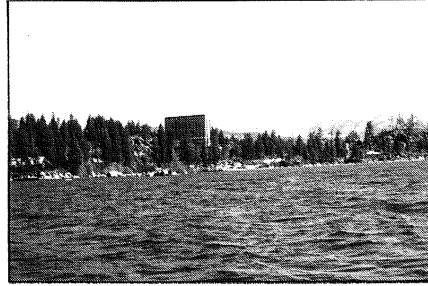
2



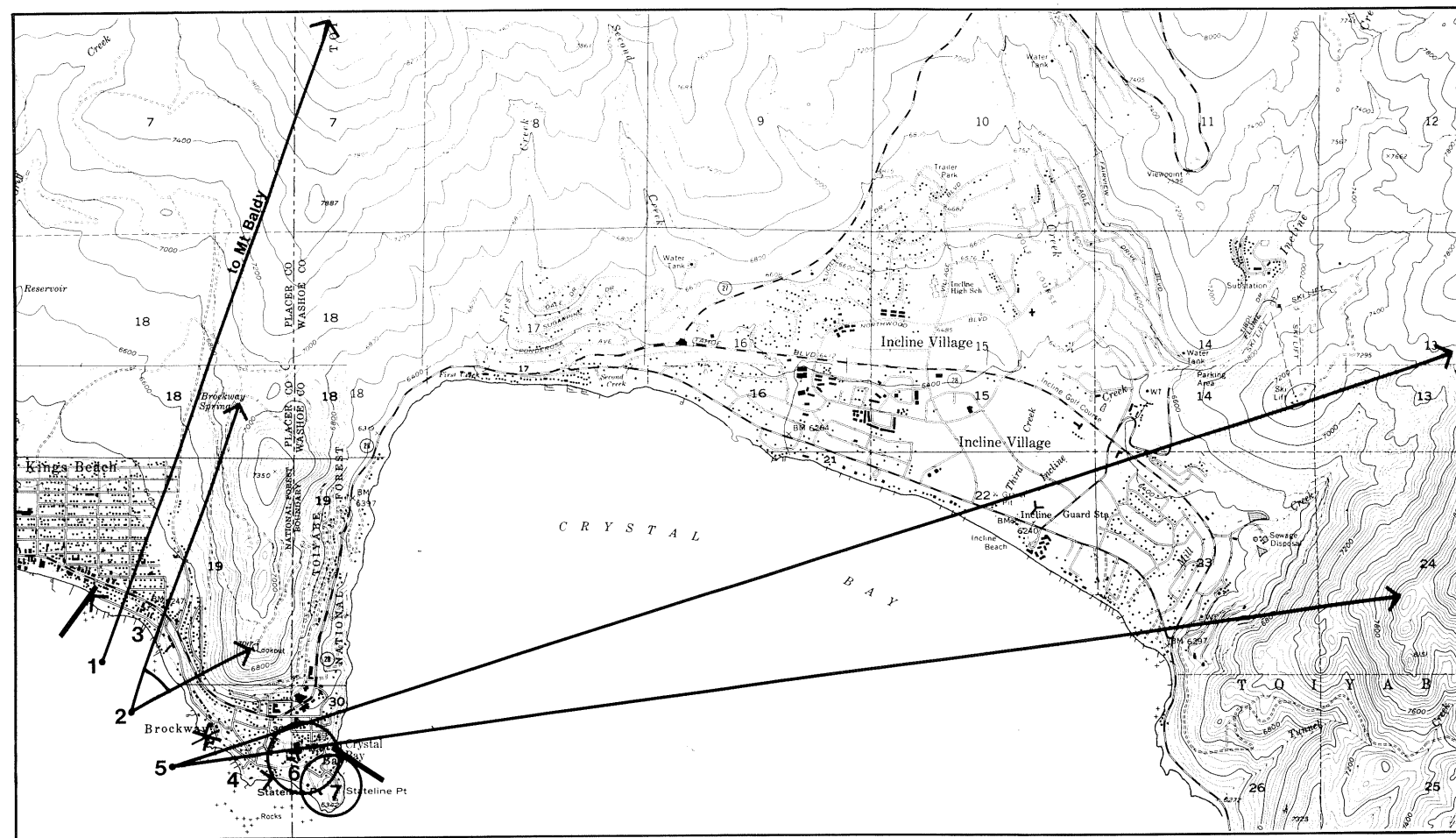
4



6



7



SHORELINE UNIT 22. BROCKWAY

Shoreline Unit 22. Brockway Summary

Background Views

- 22.1 View is of Mt. Baldy with bare summit, snow and alpine vegetation. Other high ridges with distinct clearings are visible in background.
Scenic quality: high
Rating: 3
- 22.2 View is of steep-sided ridge above Stateline Point with scattered trees and scrub, revealing road scars and clearing operations.
Scenic quality: moderate
Rating: 2
- 22.5 Peaks and snowy ranges northeast of lake are visible in background beyond Stateline Point.
Scenic quality: high
Rating: 3

Shoreline Views

- 22.3 West end view is of low bank above shore, with rocks and shallow indentations along water's edge. Pine forest is broken by several residential buildings, some large and including a 7 story building seen against backdrop. Tennis courts and landscaped area are evident.
Scenic quality: low
Rating: 1
- 22.4 East end view is of rocky shore, with large boulders and low bank, scrub, and pine forest behind. Scattered housing is evident along shore.
Scenic quality: moderate
Rating: 2

Visual Features

- 22.6 Cal-Neva Lodge is dominant feature of rectangular highrise seen against skyline; color contrast is moderate, but shape and scale degrades Stateline Point.
Scenic quality: low
Rating: 1
- 22.7 Stateline Point is distinctive rocky point, with large rounded boulders, manzanita and other shrub vegetation, scattered pines and few timber buildings integrated with steep site.
Scenic quality: high
Rating: 3

Overall unit scenic quality: moderate
Rating: 2

Shoreline Unit 23. Crystal Bay Summary

Background Views

- 23.4 View is of Mt. Baldy and Roseknob Peak in far middleground with barren ridges and broad conical peaks.
Scenic quality: exceptionally high
Rating: 3+
- 23.6 Lower hills and ridges are forested with some unobtrusive housing in middleground.
Scenic quality: moderate
Rating: 2
- 23.8 Panoramic view is of mountain ridges in background mostly forested, some open crests. Highway 27 road scars are visible.
Scenic quality: moderate
Rating: 2

Shoreline View

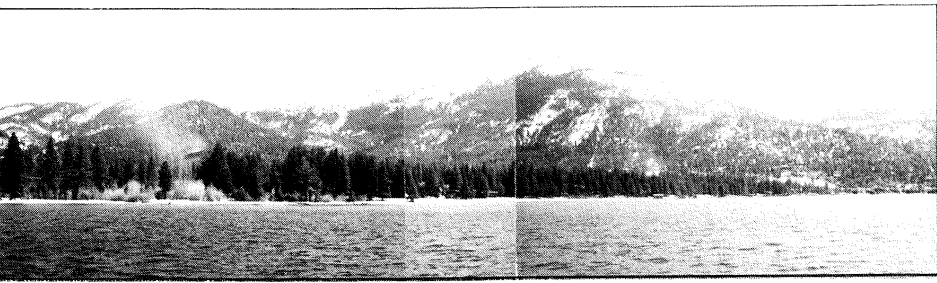
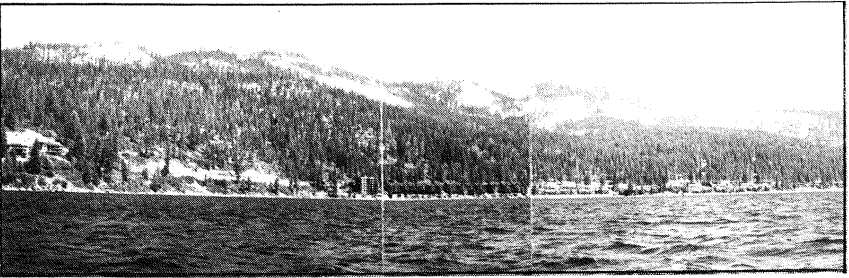
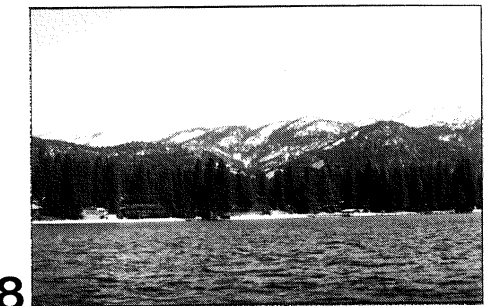
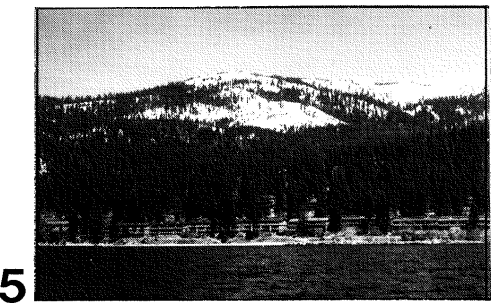
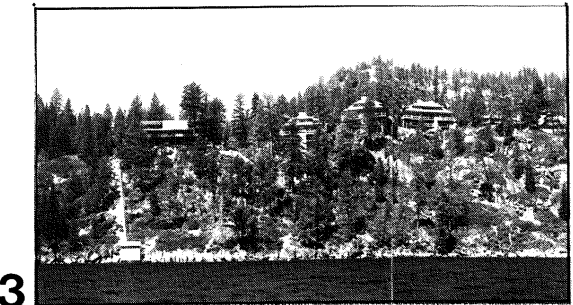
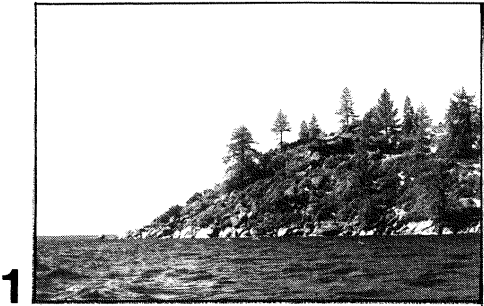
- 23.3 View is of rocky, steep slopes and cliffs, with manzanita scrub and scattered pines; several attractively designed homes are perched on slopes and among trees on skyline.
Scenic quality: high
Rating: 3
- 23.5 Shoreline is dominated by "wall-to-wall" condominiums of a dark brown color; some road scars and landscaping are visible; few piers are located here.
Scenic quality: low
Rating: 1
- 23.7 View is of sandy beach area with low shore; sandy bays alternate with more rocky area. Features are mainly pine forest and few large houses; some landscaping and riprap are visible.
Scenic quality: moderate
Rating: 2

- 23.9 View is of low shoreline with sandy beaches, predominantly undisturbed pine forest, and mixed vegetation at creek mouths. Some homes are visible in trees; there are few piers or breakwaters. Hyatt Hotel is not obtrusive above foreground trees.
Scenic quality: high
Rating: 3
- 23.10 View is of steeper shoreline, rocky, dominated by high, glaring road-cuts on slope. Some piers, boathouses and new housing are seen.
Scenic quality: moderate
Rating: 2

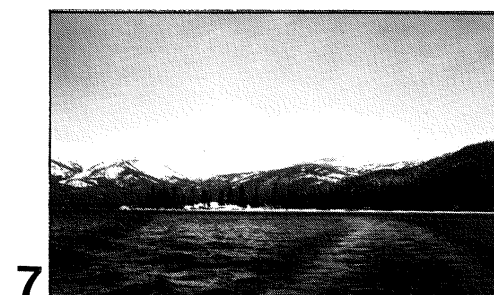
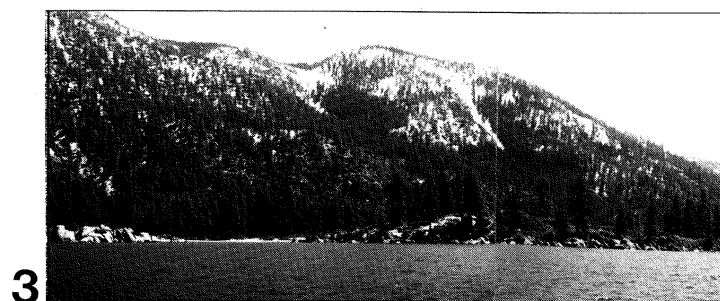
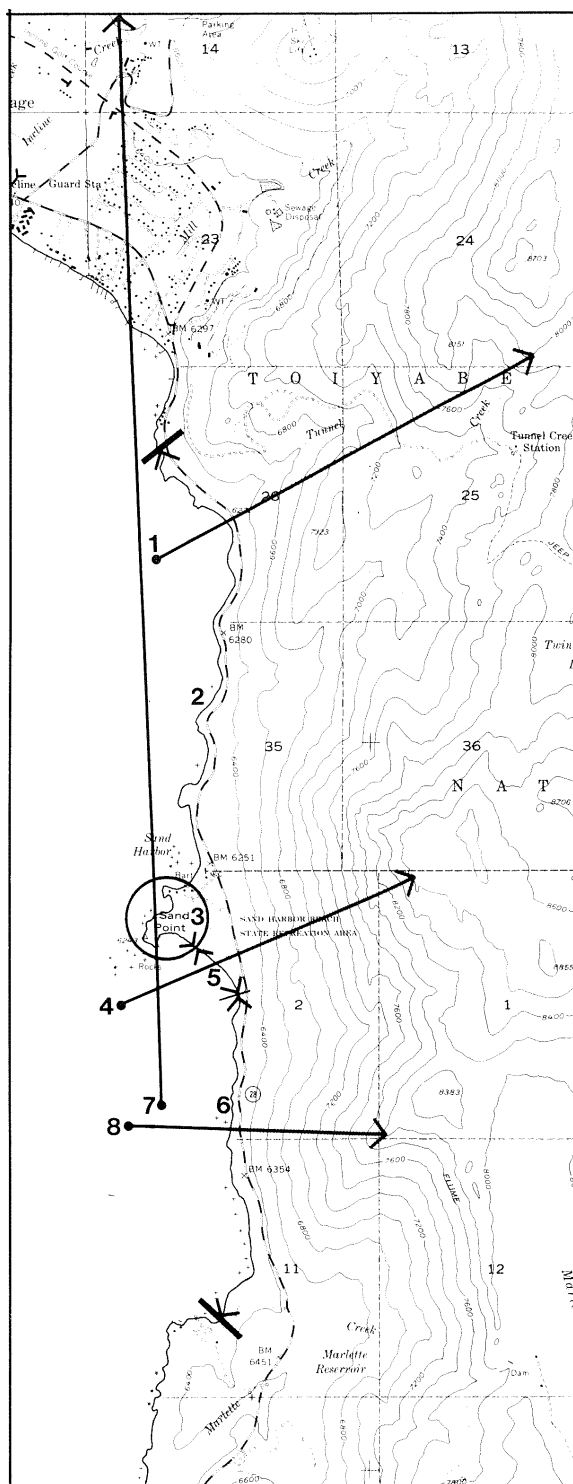
Visual Features

- 23.1 Stateline Point is distinctive rocky point, with large rounded boulders, manzanita and other shrub vegetation, scattered pines, and few timber buildings integrated with steep site.
Scenic quality: high
Rating: 3
- 23.2 Old houses of timber construction are situated on steep, rocky slopes, with unusual long wooden stairways.
Scenic quality: high
Rating: 3

Overall unit scenic quality: moderate
Rating: 2



SHORELINE UNIT 23. CRYSTAL BAY



Shoreline Unit 24. Sand Harbor Summary

Background Views

- 24.1 Steep mountains are in middleground, forested (sparsely in places), rocky, with avalanche chutes and scrub. Some road scars are visible.
Scenic quality: moderate
Rating: 2
- 24.4 Mountains are steep-sided, with sparse coniferous forest and blue-gray rock on the ridgecrest; avalanche chutes are visible.
Scenic quality: high
Rating: 3
- 24.7 Mountain peaks with snow/alpine vegetation create spectacular background for northerly views of Sand Point.
Scenic quality: high
Rating: 3
- 24.8 Forested ridges are seen in middleground as in 24.1 but without road scars.
Scenic quality: high
Rating: 3

Shoreline Views

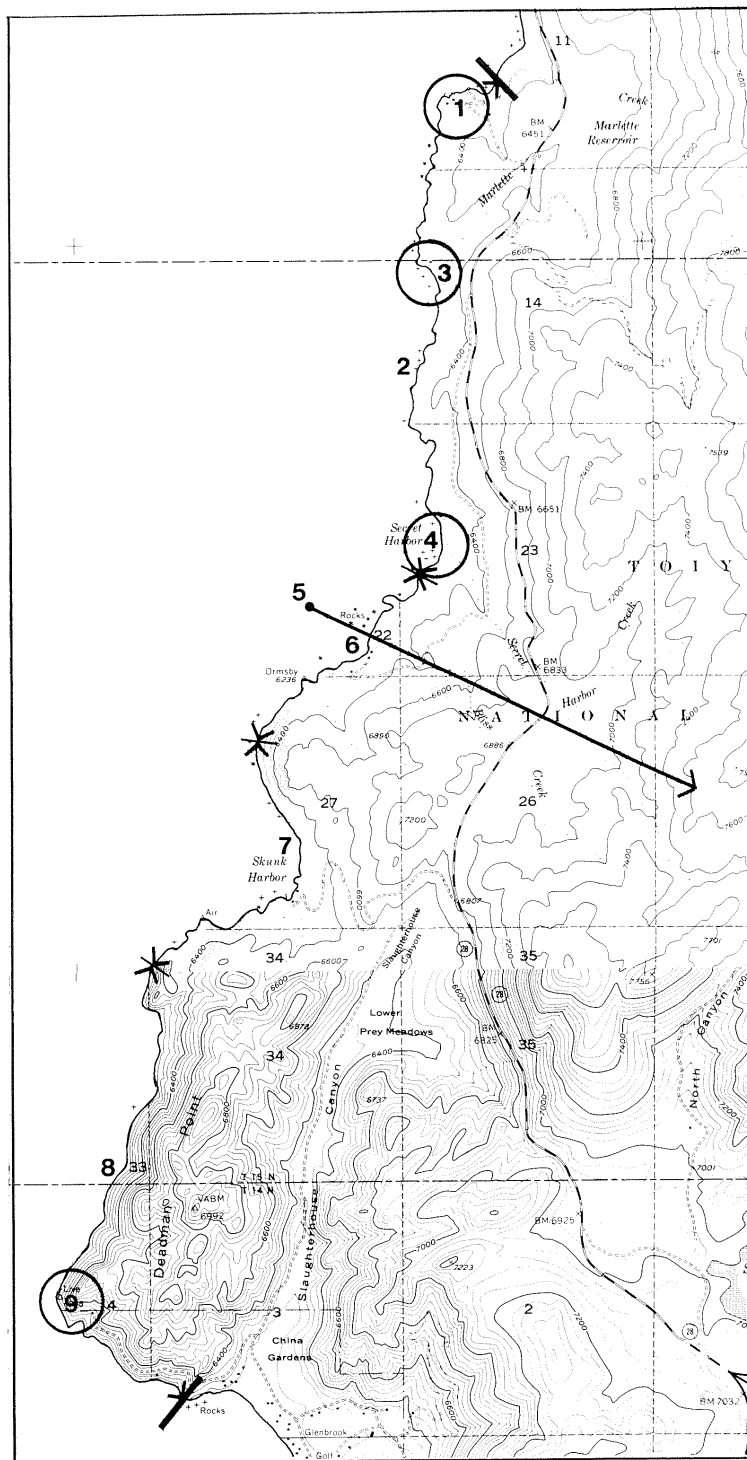
- 24.2 Rocky shore is visible with several small indentations. Large sculptural boulders are seen at waterline; road is visible with some road scars.
Scenic quality: high
Rating: 3
- 24.5 View is of sandy cove and beach and shallow blue water enclosed by pines; a few unscreened recreation facilities, of neat appearance, are visible.
Scenic quality: high
Rating: 3
- 24.6 View is of rocky shore, with sloping bank, scrub and pine forest.
Scenic quality: high
Rating: 3

Visual Features

- 24.3 Sand Harbor and Sand Point have distinctive promontory with scattered pine, big slanting boulders, and clear blue water over sand. Sheltered cove has unobtrusive boat ramp and park facilities, and sandy beaches.
Scenic quality: high
Rating: 3

Overall unit scenic quality: high
Rating: 3

SHORELINE UNIT 24. SAND HARBOR



Shoreline Unit 25. Skunk Harbor Summary

Background Views

- 25.5 View is of low forested hills and ridges, with some diffuse openings and few road scars.
Scenic quality: moderate
Rating: 2

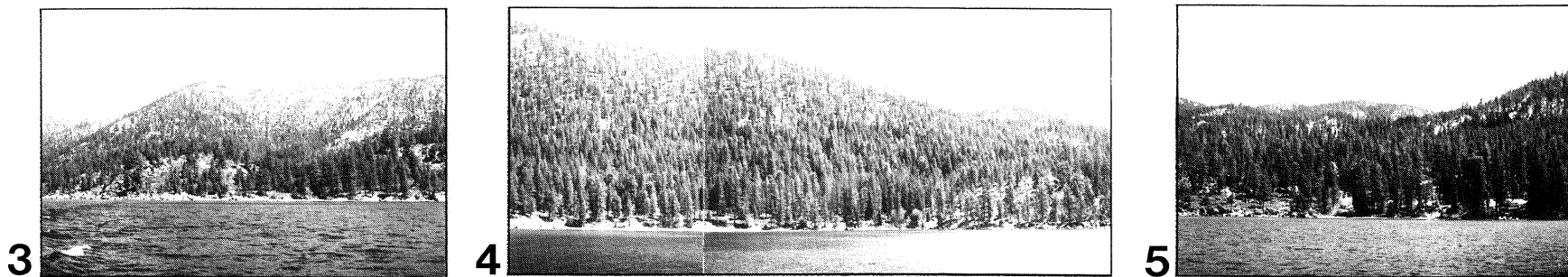
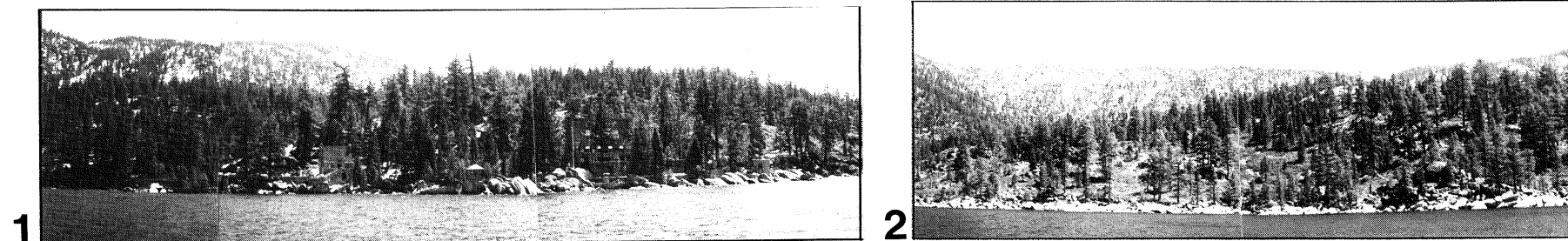
Shoreline Views

- 25.2 View is of steep shore with boulder at water's edge, and small rocky coves; scattered pine forest and openings. Highway is screened from sight.
Scenic quality: high
Rating: 3
- 25.6 Ormsby area has rocky shore interrupted by small sandy beaches and coves; pine forest with small openings and scrub.
Scenic quality: moderate
Rating: 2
- 25.7 Skunk Harbor forms a distinct cove, steeply enclosed by low forested ridges. Shoreline is rocky, particularly on headlands, with rocks of various colors; small sandy beach and one old stone house are visible.
Scenic quality: high
Rating: 3
- 25.8 Shoreline on Deadman's Point is rocky and steep, with pine/willow scrub vegetation that rises to a low ridgeline.
Scenic quality: moderate
Rating: 2

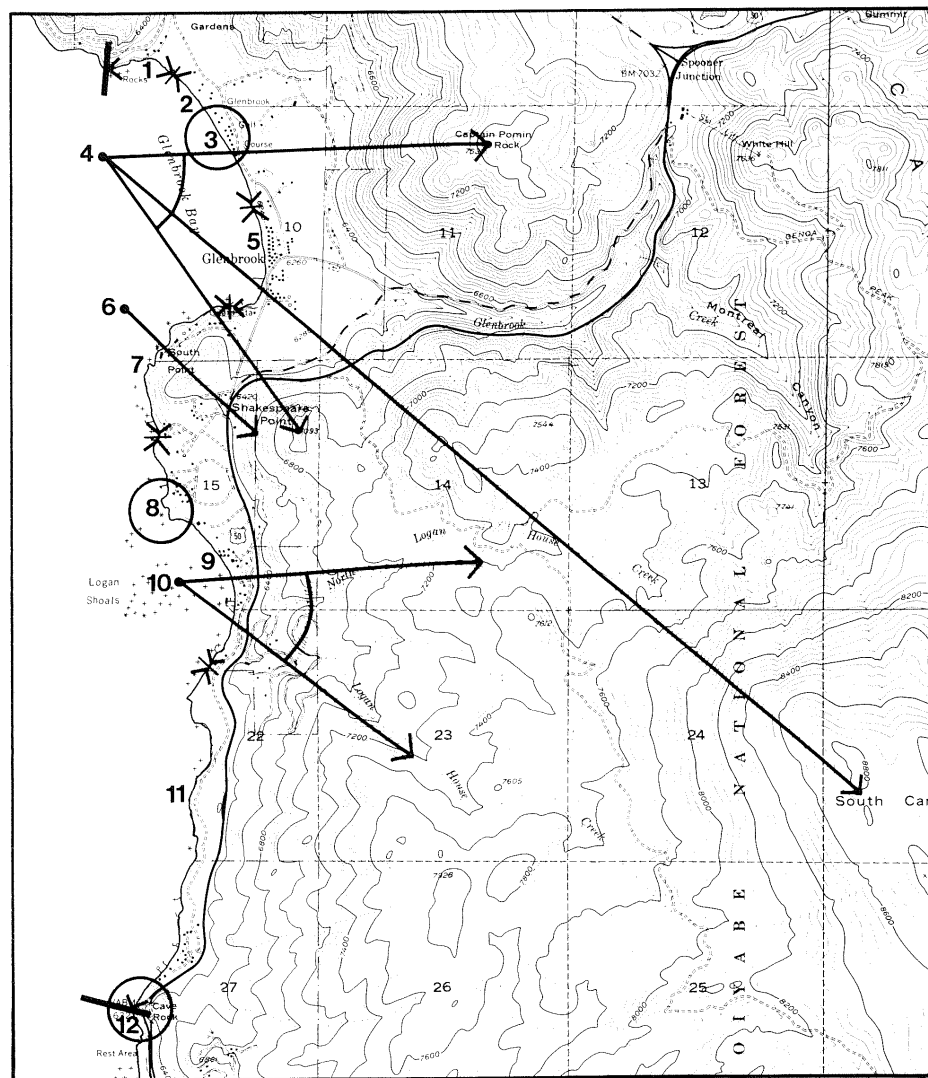
Visual Features

- 25.1 Thunderbird Castle, old boathouse, and stone lighthouse create a novel feature, though integrated with site by use of stone of same color as nearby large sculptural rocks on shore.
Scenic quality: high
Rating: 3
- 25.3 Marlette Creek outlet is marked by small sandy cove, mixed vegetation and remains of old stone hotel building on beach.
Scenic quality: high
Rating: 3
- 25.4 Secret Harbor forms a sandy cove bounded by rocky shore at each end; open pine forest and some unobtrusive buildings are visible.
Scenic quality: moderate
Rating: 2
- 25.9 Live Point is rocky, with jagged large boulders at water's edge and on steep slopes above; scattered pine and road scar on south side are visible.
Scenic quality: moderate
Rating: 2

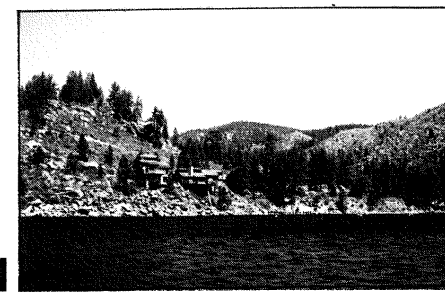
Overall unit scenic quality: moderate
Rating: 2



SHORELINE UNIT 25. SKUNK HARBOR



1



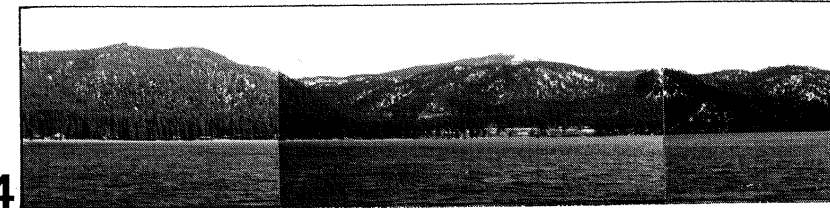
2



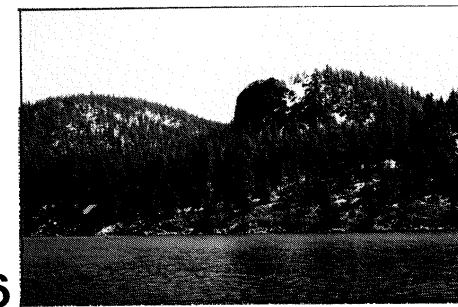
3



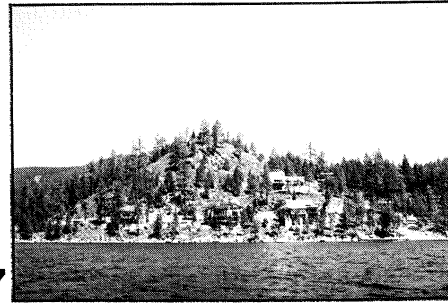
4



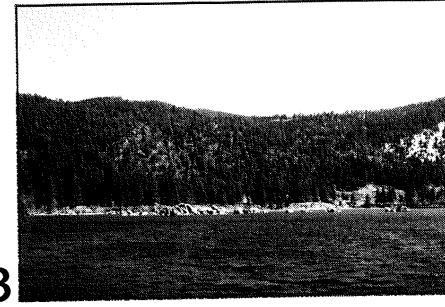
6



7



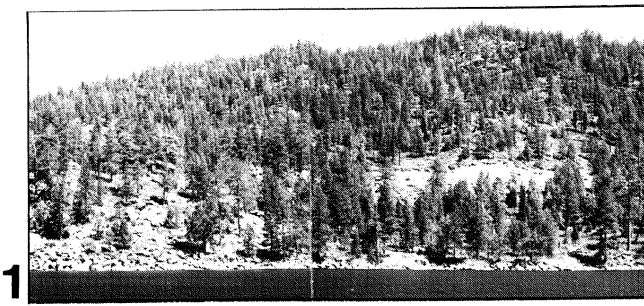
8



10



11



12



Shoreline Unit 26. Cave Rock Summary

Background Views

- 26.4 View is of forested hills with smooth skyline in middleground and background with small diffuse openings in forest. Shakespeare Point forms part of panorama. Highway 50 road cuts are prominent.
Scenic quality: moderate
Rating: 2

- 26.10 Low hills and ridges in near middleground are largely forested. Highway scars are prominent in places.
Scenic quality: moderate
Rating: 2

Shoreline Views

- 26.1 View is of steep rocky shore with scrub and scattered pines. New homes and road cut-and-fill are very prominent.
Scenic quality: moderate
Rating: 2

- 26.2 View is of low shore with long sandy beaches; older houses set in pine forest do not degrade beach views. Vegetation is varied at creek mouth.
Scenic quality: high
Rating: 3

- 26.5 Attractively designed residential development at Glenbrook is pale colored and very prominent above gently sloping shore. Open stands of mixed conifer/deciduous trees, meadow and willow scrub and pier are visual features.
Scenic quality: moderate
Rating: 2

- 26.7 South Point has steep, rocky shore, with scattered housing among open pine forest and scrub.
Scenic quality: moderate
Rating: 2

- 26.9 Shoal area has low earth banks and rocks, pine forest, and some housing; old marina is visible at shoreline.
Scenic quality: low
Rating: 1

- 26.11 Dominant appearance is natural with rocky shore and pine forest. Some road scars are prominent.
Scenic quality: moderate
Rating: 2

Visual Features

- 26.3 Old lumbermill jetties create a low-key historical feature, marked by pale gray upright timbers.
Scenic quality: moderate
Rating: 2

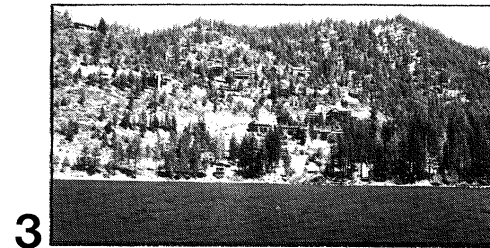
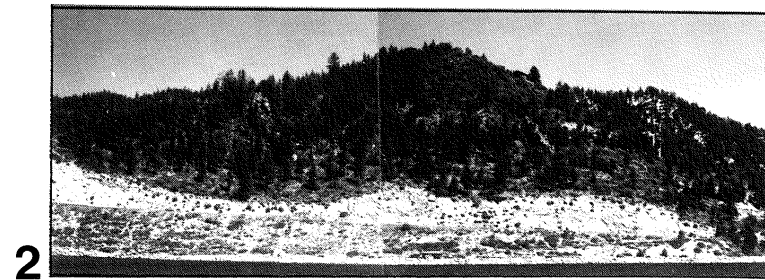
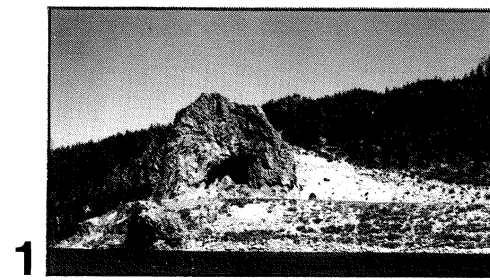
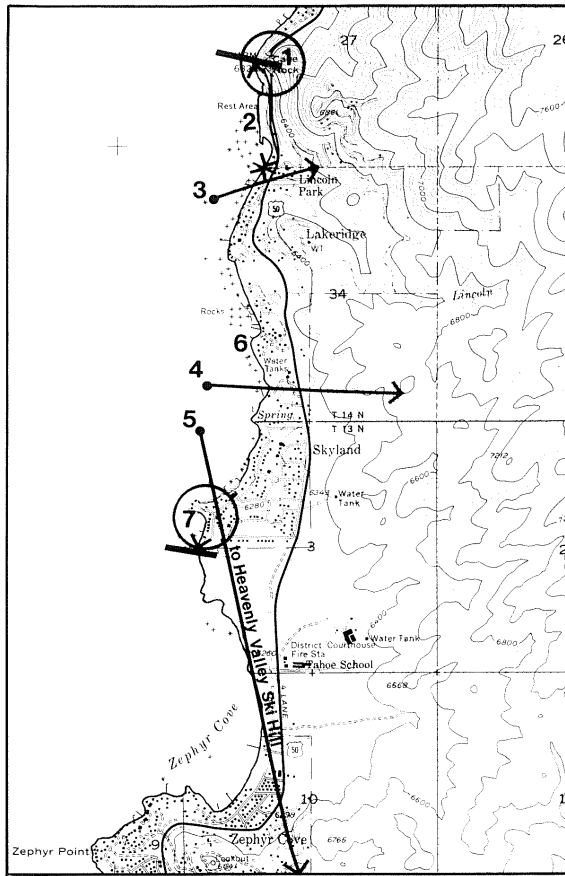
- 26.6 Shakespeare Point is a distinctive crag forming an asymmetrical feature on the skyline, near the lake.
Scenic quality: high
Rating: 3

- 26.8 Logan Shoals are marked by an unusual group of large rocks and boulders offshore.
Scenic quality: high
Rating: 3

- 26.12 Cave Rock is a prominent topographic feature rising sheer from the lake; tunnels through it provide interest, as do textural patterns on the rock face, marred by road cuts and limited nearby construction.
Scenic quality: high
Rating: 3

Overall unit scenic quality: moderate
Rating: 2

SHORELINE UNIT 26. CAVE ROCK



Shoreline Unit 27. Lincoln Park Summary

Background Views

- 27.3 Hills above Lincoln Park, seen in middleground, are much scarred by road cuts and fills, with many new houses of high color contrast and diverse design, and no screening.
Scenic quality: low
Rating: 1
- 27.4 View is of low gently sloping forested ridges, largely forested, seen in middleground.
Scenic quality: moderate
Rating: 2

- 27.5 Peaks and Heavenly Valley ski runs are prominent among forested mountain slopes in background toward the south.
Scenic quality: moderate
Rating: 2

Shoreline Views

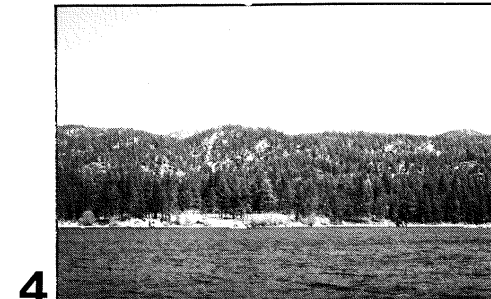
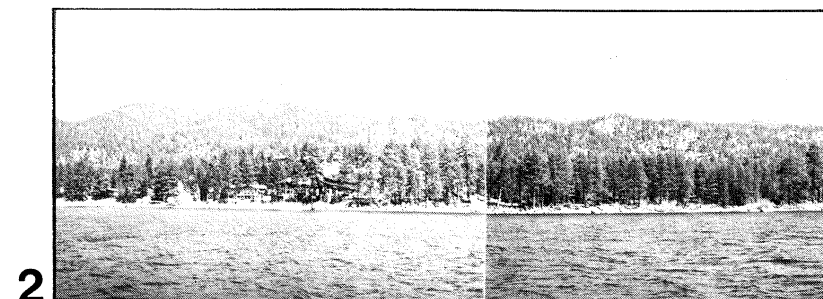
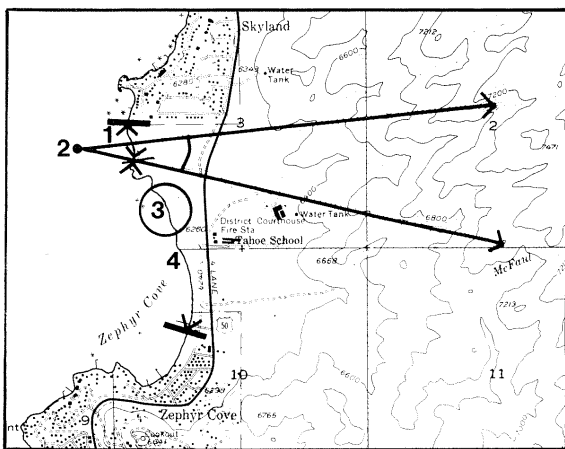
- 27.2 South of Cave Rock, shore is steep, rocky, sparsely vegetated and eroding; dominated by rock breakwater and parking lot of boatlanding and high road cuts of Highway 50 on slopes above. Both have very high color contrast.
Scenic quality: low
Rating: 1
- 27.6 South of Lincoln Park, shoreline is low, mainly forested, with scattered housing among the trees; most houses are unobtrusive, but some big houses are prominent on rocky areas at water's edge; small sandy beaches and some offshore boulders are visible. Occasional rock retaining walls and boatlandings are seen.
Scenic quality: moderate
Rating: 2

Visual Features

- 27.1 Cave Rock is a prominent sheer crag with tunnel; attractive rock retaining wall but very intrusive adjacent cut slope are seen.
Scenic quality: high
Rating: 3
- 27.7 Box-like large houses on rocks at water's edge are prominent on the point and degrade views.
Scenic quality: low
Rating: 1

Overall unit scenic quality: low
Rating: 1

SHORELINE UNIT 27. LINCOLN PARK



Shoreline Unit 28. Tahoe School Summary

Background Views

- 28.2 View is generally unimpressive, forested, steep, hills in middleground.
Scenic quality: moderate
Rating: 2

Shoreline Views

- 28.1 View is of rocky, forested shore, gently sloping, with willow scrub and some new housing clustered at shoreline among trees.
Scenic quality: moderate
Rating: 2
- 28.4 View is of low shore of natural appearance. There are small sandy beaches at edge with some interesting boulders. Willow and mixed vegetation is located at creek mouths, and grassy area at south end. Road is visible in places.
Scenic quality: moderate
Rating: 2

Visual Features

- 28.3 Offshore rocks and boulders form small islands.
Scenic quality: high
Rating: 3

Overall unit scenic quality: moderate
Rating: 2

SHORELINE UNIT 28. TAHOE SCHOOL

Shoreline Unit 29. Zephyr Cove Summary

Background Views

- 29.1 Low rugged treed hills form middleground view; hills are rocky with some houses.
Scenic quality: moderate
Rating: 2
- 29.5 Middleground view is of rugged treed and rocky hills, with some houses.
Scenic quality: moderate
Rating: 2

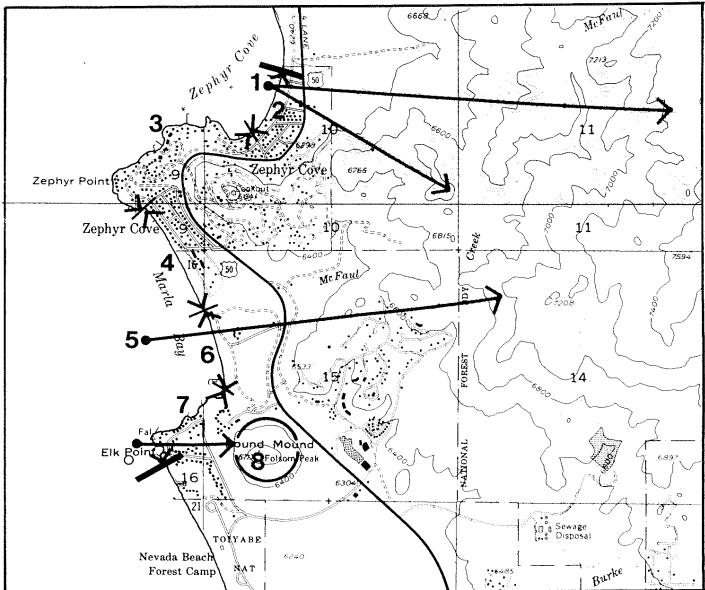
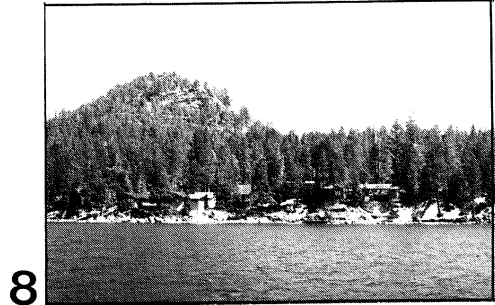
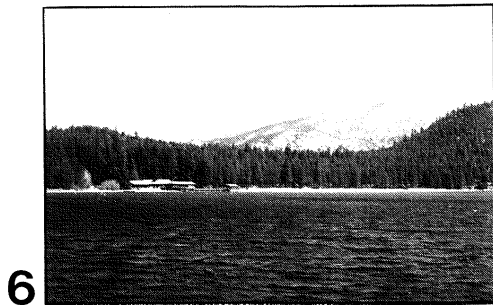
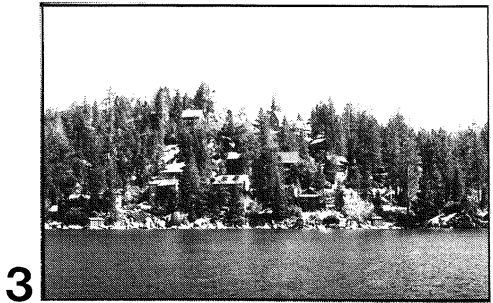
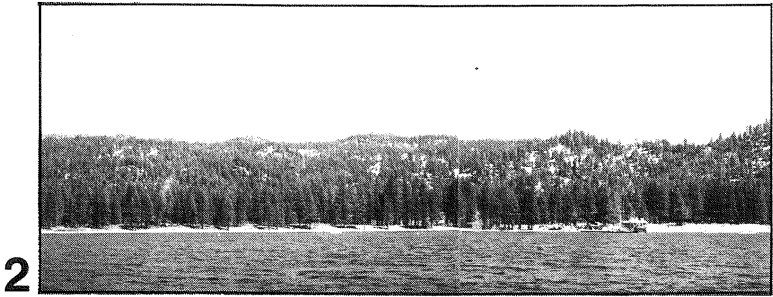
Shoreline Views

- 29.2 Zephyr Cove has a low, sandy, uninterrupted beach, backed by deciduous scrub and open forest, with willow providing color diversity at creek mouth. The paddle steamer "Dixie", and other boats and buoys provide interest, but there is some shoreline clutter at south end. Road and traffic are visible in places.
Scenic quality: moderate
Rating: 2
- 29.3 Zephyr Point is rocky, quite steep, with houses among pine trees and rocks, but without evident disturbance. Lighthouse on pier is interesting. Some stone retaining walls are visible on shoreline.
Scenic quality: moderate
Rating: 2
- 29.4 South of Point, shore has sandy beaches with prominent housing among trees on and above the shoreline. Several large condominiums set among trees are landscaped and not unattractive. There are few piers and buoys. At south end, clubhouse blocks views of natural creek mouth, varied vegetation and meadow beyond.
Scenic quality: moderate
Rating: 2
- 29.6 View is of natural appearing shoreline, with sandy beach. Some clutter from signs and low walls is visible, but no large structures, except for one pier. Slope is densely forested.
Scenic quality: moderate
Rating: 2
- 29.7 Shore below Round Mound is steep and rocky, with houses prominent among pines near the water's edge.
Scenic quality: moderate
Rating: 2

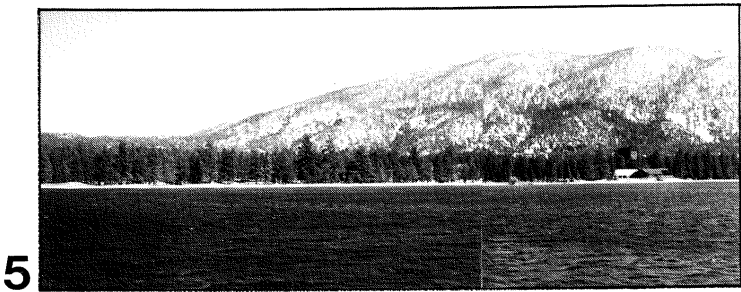
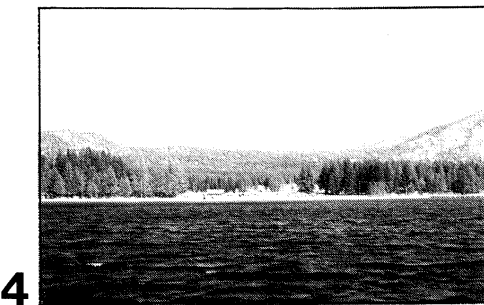
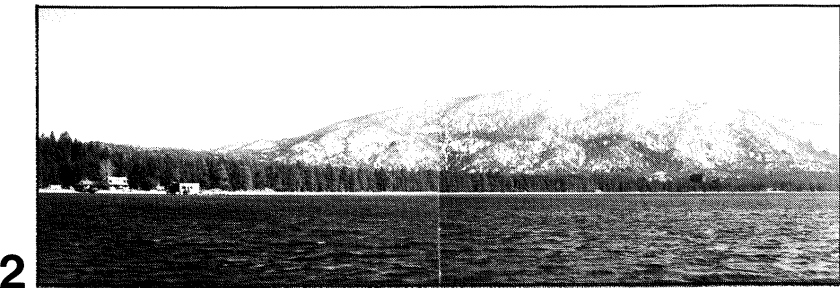
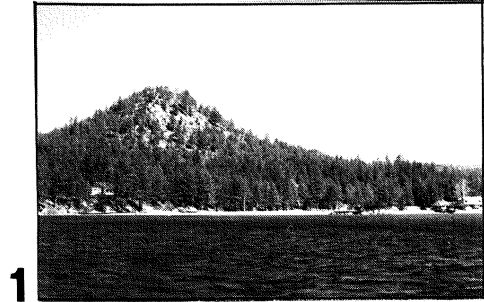
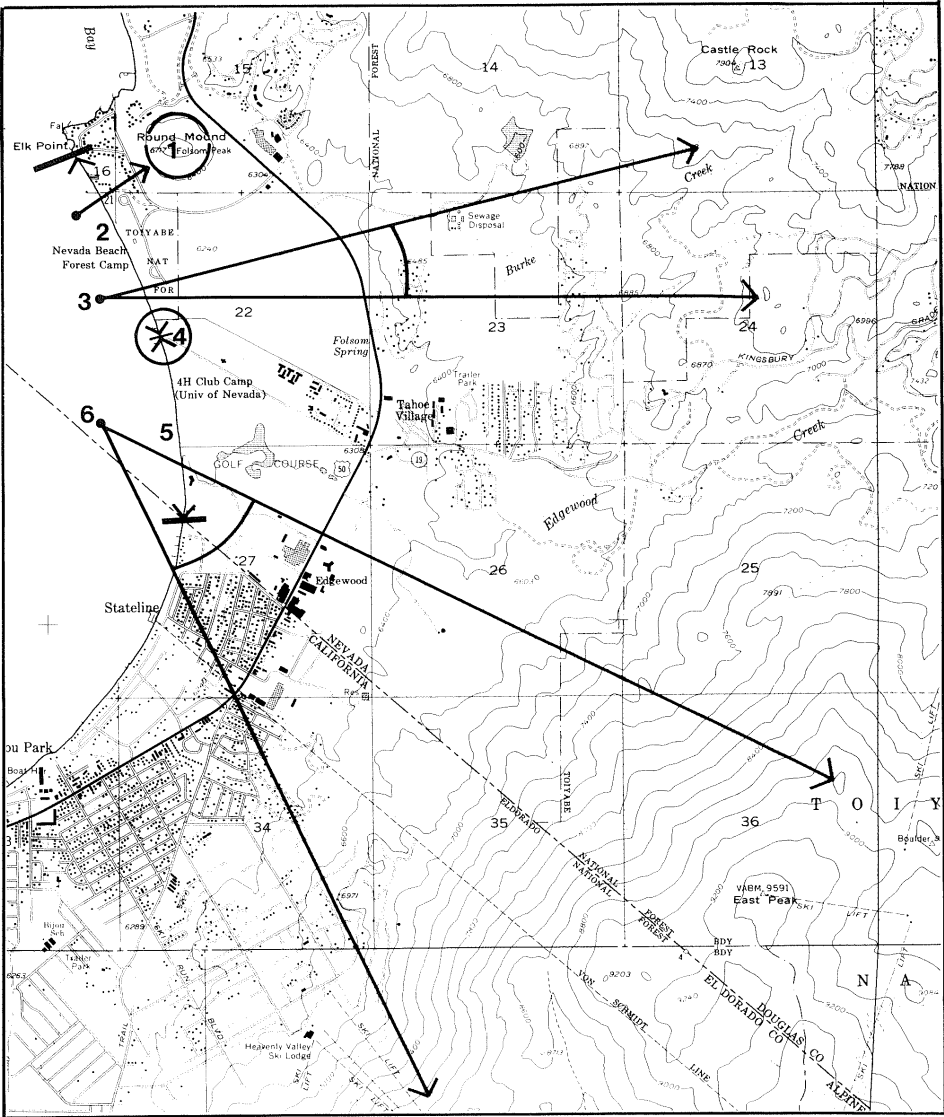
Visual Features

- 29.8 Round Mound is a distinctive symmetrical hill of conical silhouette, 1/4 mile from shore.
Scenic quality: high
Rating: 3

Overall unit scenic quality: moderate
Rating: 2



SHORELINE UNIT 29. ZEPHYR COVE_____



Shoreline Unit 30. Edgewood Summary

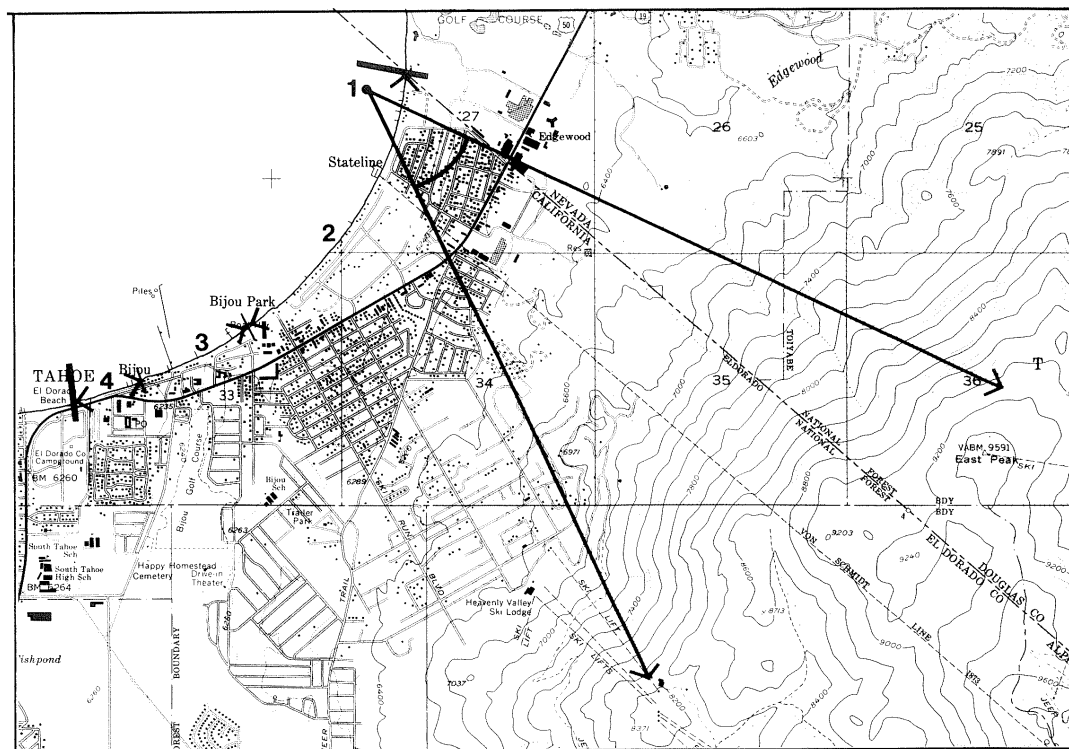
- Background Views
- 30.3 View is of low forested ridges and some rock faces. Some buildings are visible on Kingsbury Grade.
Scenic quality: moderate
Rating: 2
- 30.6 Mountains and conical peaks form view in background, forested but snowy. Ski run has very high contrast. Casinos are visible below mountains.
Scenic quality: high
Rating: 3

- Shoreline Views
- 30.2 View is of low sandy shore with one development near north end of beach, a cluster of buildings and equipment, brown breakwater and pier. Otherwise, view is largely natural and unvaried with pine forest and some big trees.
Scenic quality: moderate
Rating: 2
- 30.5 Golf course (Edgewood) has natural appearance save for low clubhouse; meadow appearance is given by vistas between trees.
Scenic quality: high
Rating: 3

- Visual Features
- 30.1 Round Mound has distinctive conical shape above shore.
Scenic quality: high
Rating: 3
- 30.4 Trailer Park is an unattractive building with many pale reflective trailers which are visually prominent; attractive willow vegetation dominates at creek mouth.
Scenic quality: low
Rating: 1

Overall unit scenic quality: moderate
Rating: 2

SHORELINE UNIT 30. EDGEWOOD



Shoreline Unit 31. Bijou Summary

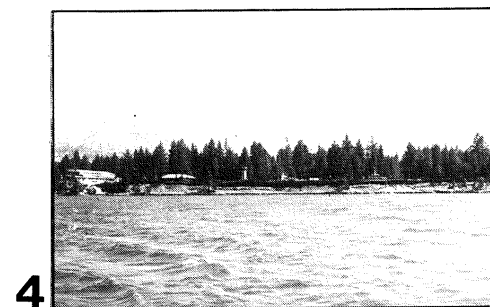
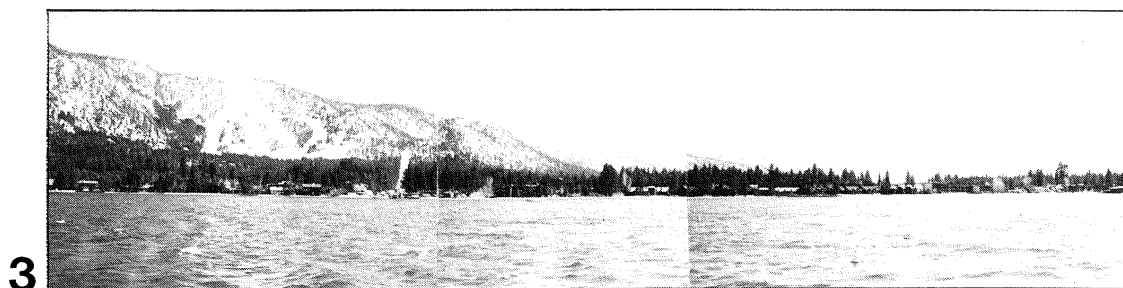
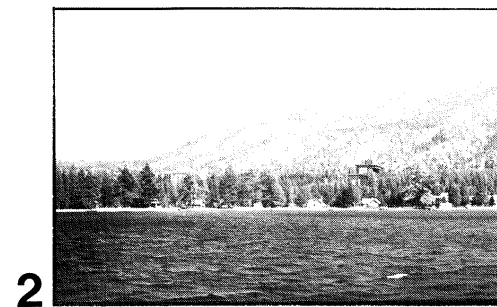
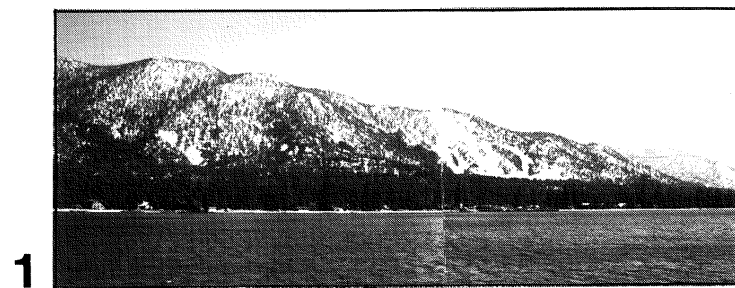
Background Views

- 31.1 Heavenly Valley ski slopes and stateline clearing scar are very prominent linear contrasts which degrade an otherwise very scenic mountain backdrop in middleground. Some road scars are visible near the ski development.
Scenic quality: moderate
Rating: 2

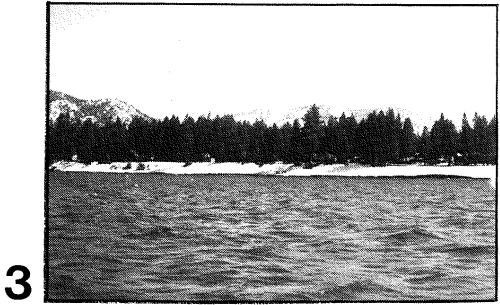
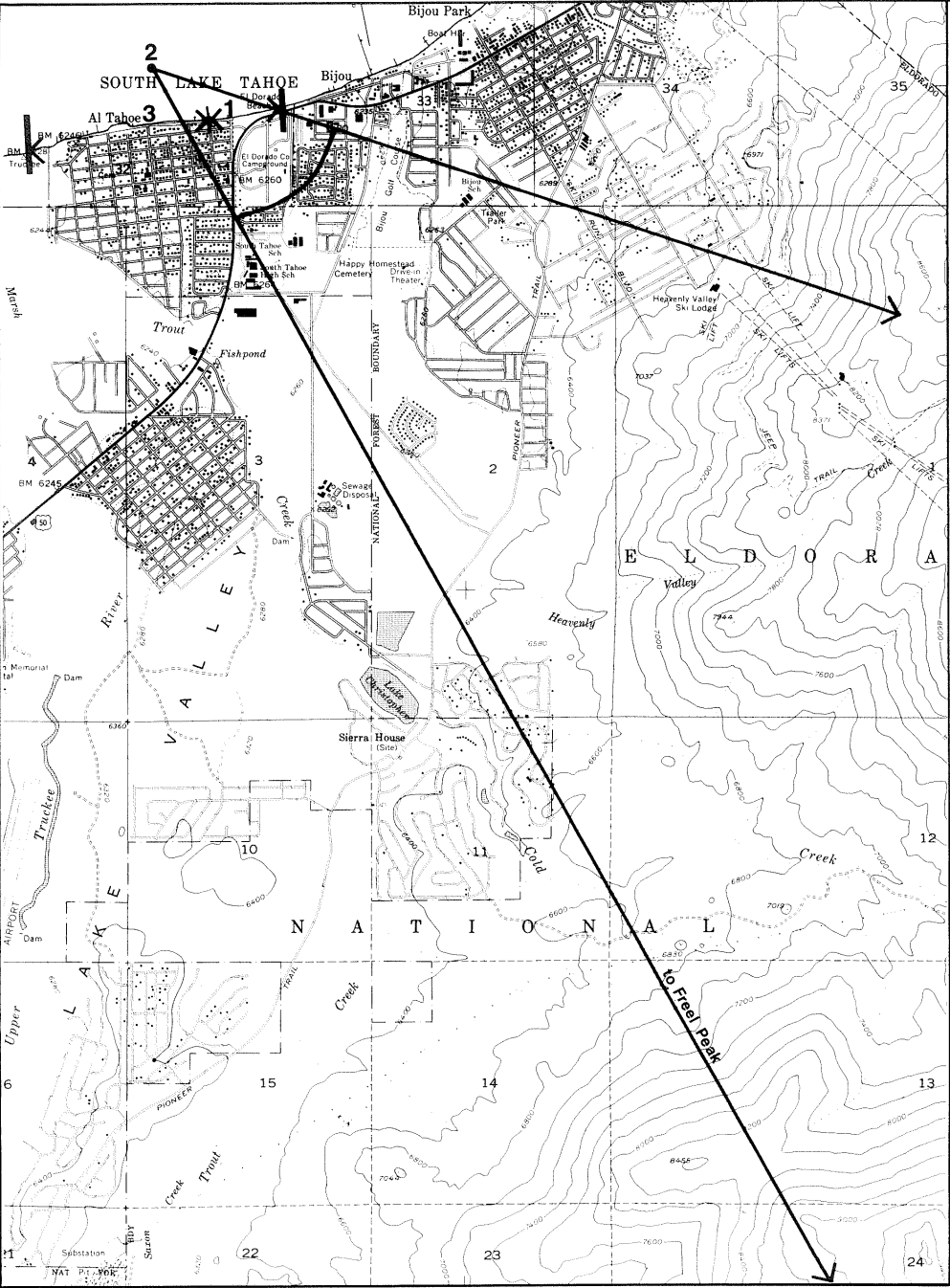
Shoreline Views

- 31.2 Stateline has low sandy shore with residential development among pine trees; casinos are visible over tree tops but not prominent; several piers, breakwaters, and four boat dock line the shore.
Scenic quality: moderate
Rating: 2
- 31.3 Chevron signs/marinas are visually prominent on low shore. Big apartment/commercial buildings are visible; there is less screening by trees in places. Some cluster housing beside sandy beach is quite well designed. Large pier, many buoys, colorful boats are features.
Scenic quality: moderate
Rating: 2
- 31.4 At south end, a steep, low bank below Highway 50 is eroding, partly supported by unattractive riprap and concrete wall. Traffic is prominent; roadside trees are dying. Commercial development is evident beyond highway.
Scenic quality: low
Rating: 1

Overall unit scenic quality: moderate
Rating: 2



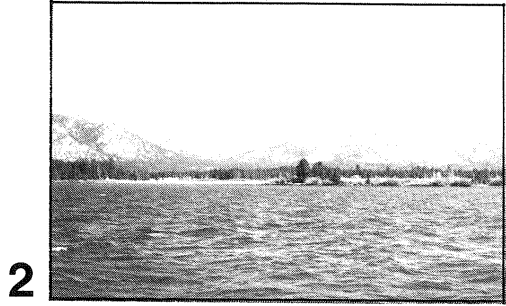
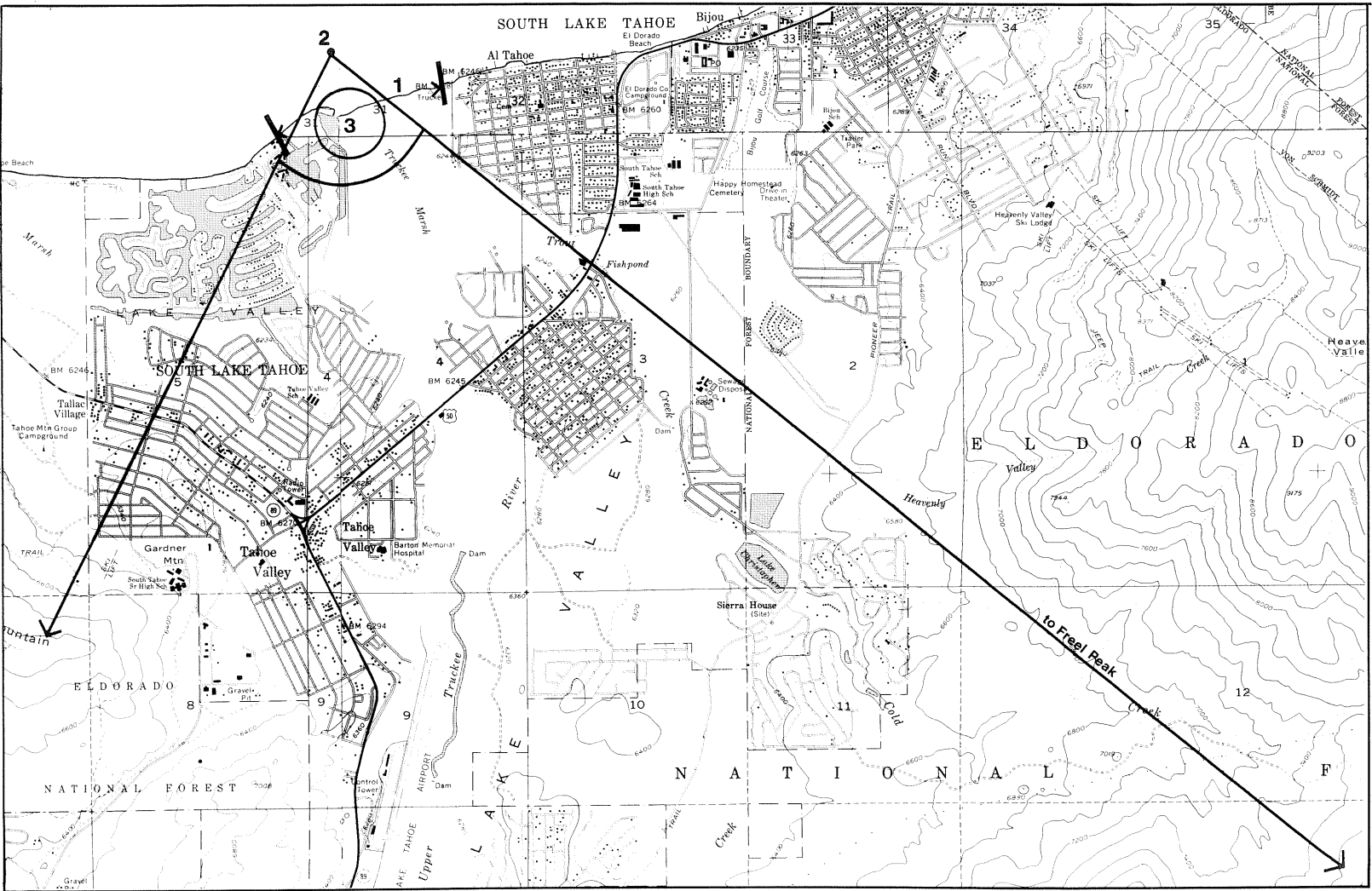
SHORELINE UNIT 31. BIJOU



Shoreline Unit 32. Al Tahoe Summary

- Background Views
- 32.2 Freer Peak has reddish summit which is distinctive among high mountain ridges in background, snowy for much of year. Heavenly Valley is also visible.
Scenic quality: high
Rating: 3
- Shoreline Views
- 32.1 Eldorado Beach has prominent view of highway, unsightly retaining wall, and shore beach. Many buoys clutter the water.
Scenic quality: low
Rating: 1
- 32.3 View is of low steep bank, with flat forested area behind for the most part with dense housing. In places, condominiums and cluster housing of diverse styles and colors degrade the water's edge. Unsightly breakwater is near the west end.
Scenic quality: low
Rating: 1
- Overall unit scenic quality: low
Rating: 1

SHORELINE UNIT 32. AL TAHOE



Shoreline Unit 33. Truckee Marsh Summary

Background Views

- 33.3 View is of Freel/Job's peaks in background panorama of lower ridges, some with bare summits.
Scenic quality: high
Rating: 3

Shoreline Views

- 33.1 View is of low shore with distinctive vegetation--red willow scrub and meadow, flanked by trees. Water is inside beyond shoreline bar. Little development is visible except for housing of Tahoe Keys. Marsh is degraded by utility poles.
Scenic quality: high
Rating: 3

Visual Features

- 33.2 Cluster of willows and pines mark river mouth.
Scenic quality: high
Rating: 3

Overall unit scenic quality: high
Rating: 3

SHORELINE UNIT 33. TRUCKEE MARSH